

Stock No. 26273

U. S. PUBLIC LAND SURVEY MONUMENT RECORD

INSTRUCTIONS:

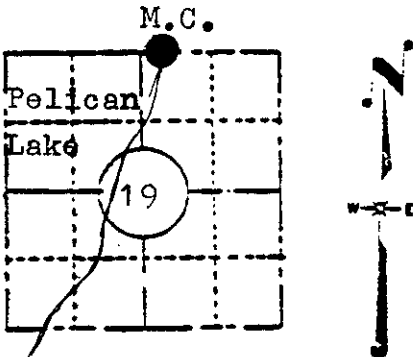
This record shall show the location of the corner and shall include all of the following nine elements (a through i).

(a) Identify the corner by reference to the U.S. public land survey system.

Meander Corner Between Sections 18 and 19, Township 35 North, Range 11 East, on the east shore of Pelican Lake.

Sec. 19, T 35 N, R 11 E.

Original Survey in 1859 by William E. Daugherty.



West on true line between Sec. 18 & 19.
 23.50 ch. Leave Swp. bears N & S.
 37.32 ch. Pelican Lake, set meander post
 Maple 8", N77E, 44 lks
 Maple 8", S69E, 34 lks

D.H. Vaughan Survey in 1921
 West between Sec 18 & 19.
 33.00 ch. C & NW Railroad
 34.00 ch. State Highway
 36.65 ch. Set M.C. 25 links East of waterline on shore of Pelican Lake.
 Oak 10, N4 1/2 W, 20 1/2
 Oak 14, S31E, 36 3/4

LOCATION SKETCH

(Location of landmark indicated by "O")

H.C. Hall Survey in 1930
 Run line Between Northeast Corner of Sec 19 and Meander Corner. True line agrees with East end of iron fence.
 Set spike in 10" Y. Pine, bears N11 1/2 E, 22.35 Ft.
 D. H. Vaughan's 14" Oak, bears S36E, 36.25 Ft.
 Iron Fence Corner Post, bears East, 8 Ft.

(b) Describe any record evidence, monument evidence, occupational evidence, testimonial evidence or any other material evidence you considered, and whether the monument was found or placed.

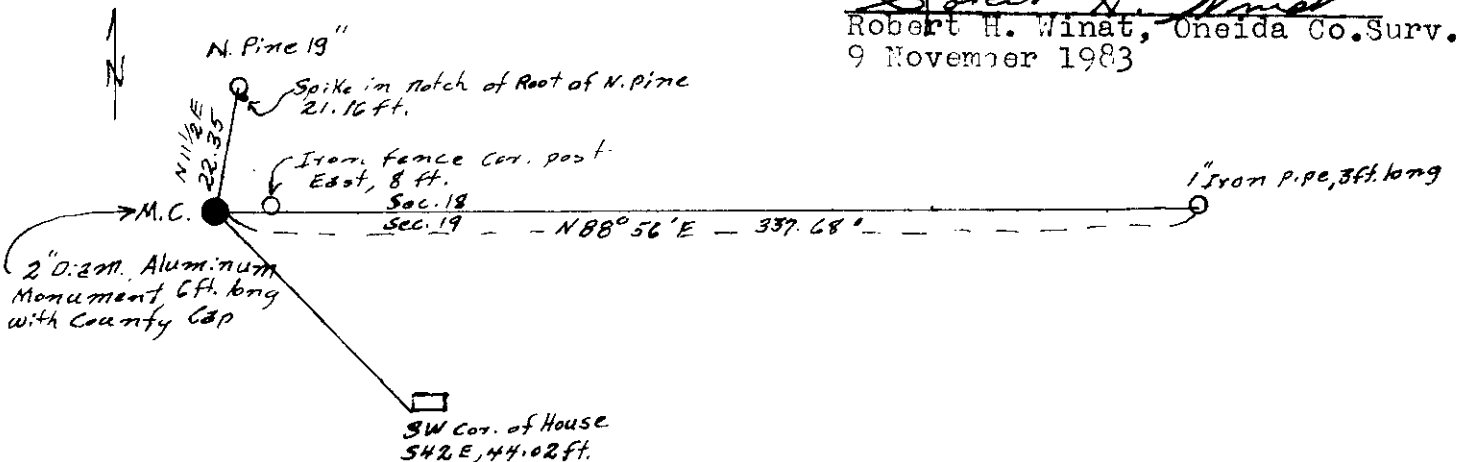
June 14, 1983; I found no evidence of meander corner on lake shore, shoreline has been riprap. Found iron fence corner post. Found Red Pine 19" bearing N 11 1/2 E, 22.35 Ft. from a point 8 Feet west of fence corner. No evidence of Vaughan's Oak found. I set Meander Corner Monument from the Red Pine and fence Corner. From the meander corner as monumented the Northeast corner of Sec. 19, bears N 87° 56' E, 2434.02 Feet. I set a 1" diam. galvanized iron pipe, 36" long at N 87° 56' E, 337.68 feet, on the east Railroad right of way line. At this location I found iron pipe which had been pointed and driven which had been heaved out by the frost.

(c) In the plan view drawing below, provide reference ties to at least 4 witness monuments, or, if the location is within a municipality, to at least 2 witness monuments. (Witness monuments shall be made of concrete, natural stone, iron or other equally durable material, except wood.) Describe witness monuments.

(d) Show a plan view drawing depicting the relevant monuments and reference ties which is sufficient in detail to enable accurate relocation of the corner monument if the corner monument is disturbed. Indicate north.

Compared with all record data and accepted as correct.

Robert H. Winat
 Robert H. Winat, Oneida Co. Surv.
 9 November 1983



351180017

N-3

(e) Describe any material discrepancy between the location of the corner as restored or reestablished and the location of that corner as previously restored or reestablished by distance and direction. Show the discrepancy on the plan view drawing under (d), above. Show the distances between the corner as previously restored or reestablished and (1) the corner as restored or reestablished, and (2) to at least 2 of the witness monuments shown on the drawing in (d), above.

No discrepancy were found at this time.

(f) Was the corner restored through acceptance of (1) an obliterated evidence location, or, (2) a found perpetuated location?

Corner was restored from evidence of record.

(g&h) Was the corner reestablished through lost corner proportionate methods? If so, show the method, including the directions and distances to other public land survey corners used as evidence or used for proportioning in determining the corner location?
no

REGISTER'S OFFICE }
Oncida County, Wis. }

Received for Record the 15 day of

March A.D. 1984 at

11:30 o'clock A.M. and recorded in

Vol. _____ on page _____

Doris Verage Kuehn
Register

Cynthia A. Pitts, Deputy

(i) I, Jean F. Resvick
(type or print name) certify that the corner location shown on this record was determined by me or under my direction and control and that this U.S. Public Land Survey Monument Record is correct and complete to the best of my knowledge and belief.

Jean F. Resvick
Signature

July 13, 1983

Date

S-802

