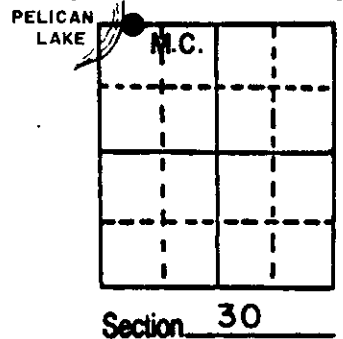


U.S. PUBLIC LAND SURVEY MONUMENT RECORD

Note: This form is intended and designed to fulfill all requirements of Wisconsin Administrative Code, Chapter A-E 5.02, U.S. Public Land Survey Monument Record (3) (a) (b) (c) (d) (e) (f) (g) (h) (i). An additional sheet may be added if necessary to conform with said requirements.

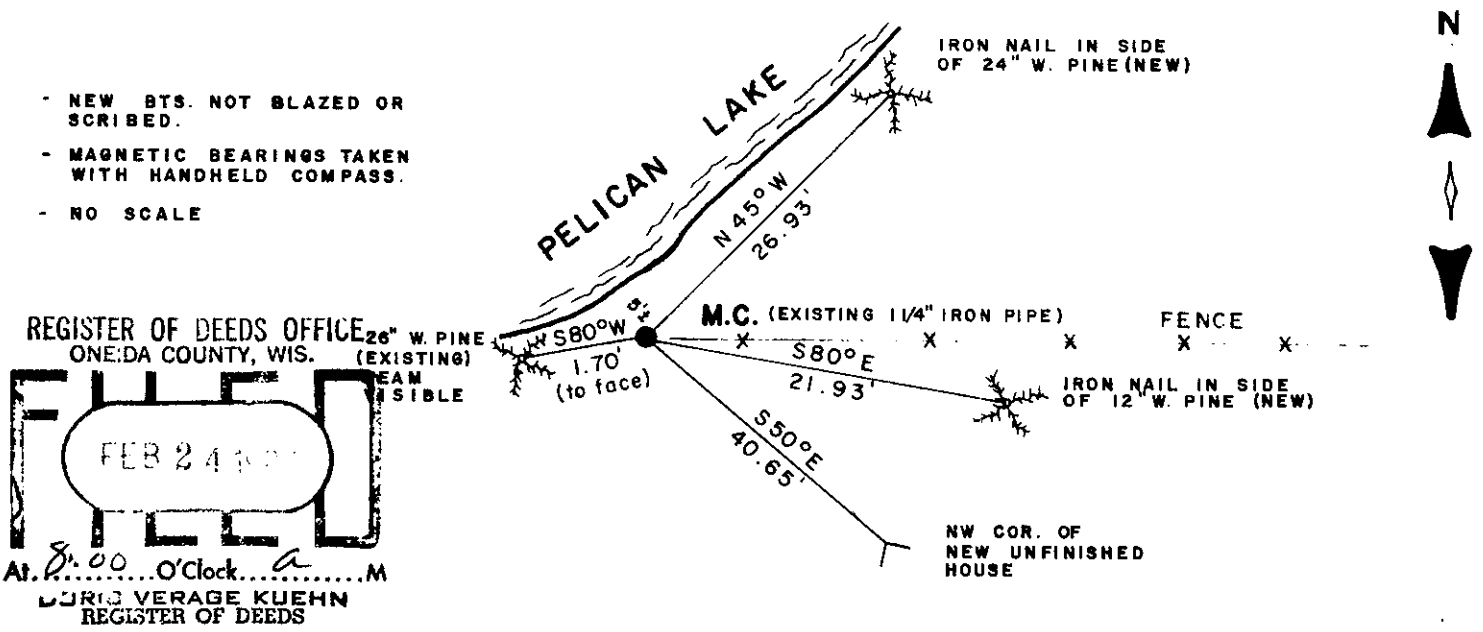
(a) Corner location: Township 35 North
 Range 11 East ~~West~~
 Town/City/Village SCHOEPKE
 County ONEIDA



(b) (f) (g) (h) Description of monument found at this corner and if it was accepted, state all evidence (material, testimonial, occupational, plats, records, other monuments) used as a basis for accepting. If not accepted or if nothing was found, state evidence used as basis for establishing location. If reestablished through lost corner proportionate methods, indicate all monuments, distances and directions used to establish.

- 1859 Wm. Daugherty set original corner west between 19 & 30 73.34 set meander post. BT's W. Pine 7" S21E 14, Birch 7" N74E 4.
- 1921 D.H. Vaughan did not find MC. Found old fence and ran east to section corner.
- 1985 I found iron pipe and old BT as shown below. Made new BT's as shown below.

(c) (d) (e) Plan view of corner with ties to at least 4 witness monuments. If in disagreement with previously established corner, show the distances between the two corners and also indicate the ties to the disputed corner.



- NEW BTS. NOT BLAZED OR SCRIBED.
- MAGNETIC BEARINGS TAKEN WITH HANDHELD COMPASS.
- NO SCALE

REGISTER OF DEEDS OFFICE
 ONEIDA COUNTY, WIS.
 FEB 24 1987
 At 8:00 O'clock A.M.
 JURIG VERAGE KUEHN
 REGISTER OF DEEDS

(i) I, WILLIAM E. BANDOW R.L.S. 1182
 (type or print name) certify that the corner location on this record was determined by me or under my direction and control and that this U.S. Public Land Survey Monument Record is correct and complete to the best of my knowledge and belief.
William E. Bandow 12-22-86
 Signature Date
 GENISOT & ASSOCIATES INC.
 1512 EAGLE ST., RHINE, WI.

REGISTER OF DEEDS OFFICE
 ONEIDA COUNTY, WIS.
 FEB 24 1987
 At O'clock M
 JURIG VERAGE KUEHN
 REGISTER OF DEEDS

Index No. R-1-2

351190035

