

CERTIFIED LAND CORNER RESTORATION

Index No. U-14

State of Wisconsin

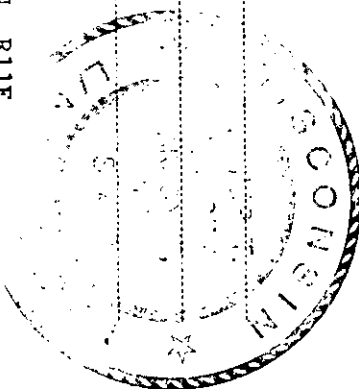
County of Oneida } ss.

I Phillip T. Hansen, do hereby certify that on the 7th day of February, 1979, I ~~found~~ established ~~marked~~ the SW 1/16 corner of Section 27 Township 35, North, Range 11, East, Fourth Principal Meridian, as described hereon; and that from this evidence I established a new monument and accessories as described hereon to perpetuate the original location of this corner.

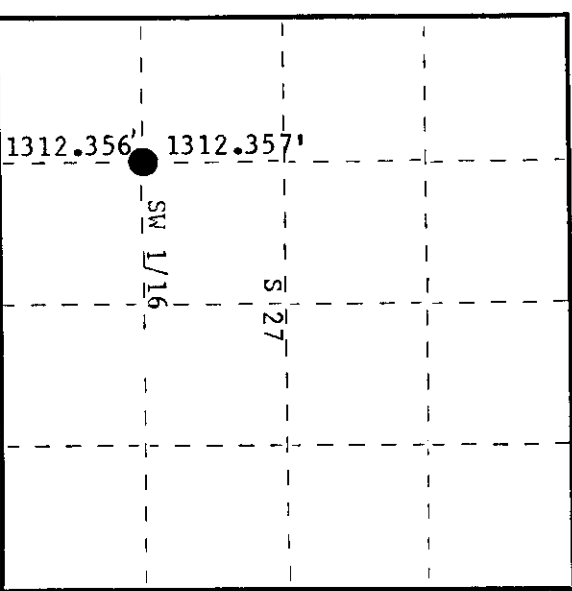
Resident witnesses:

Glen Barker

Herb Wagoner



T35N R11E



History of original corner establishment:

Description of corner evidence found:

No evidence of any corner found. Corner established by traverse and computation. Computed distance from W 1/16 corner between sections 27 & 34 to WC 1/16 section 27 is 2624.713' at bearing N 0-27-11 W. Computed location of SW 1/16 corner is 1312.356' of W 1/16 and 1312.357' of WC 1/16.

Description of monument and accessories I established to perpetuate the original location of this corner. Set a 1 1/2" iron pipe with brass cap projecting 12" above ground. Cap stamped:

Marked NBT - S498  
Black Spruce 4" S54°W 17.55' scribed B.T. T35N R11E  
Nothing else suitable for B.T.'s, all tag older. SW 1/16 S 27  
CFI-1979

Dated at Rhinelander, Wis., this 20th day of February, 1979.

Signature: Phillip T. Hansen Title: Registered Land Surveyor Registration No. S-498  
(County Surveyor, Registered Land Surveyor, or other duly authorized official)  
Office of Register of Deeds, County of Oneida  
Instrument was filed in this office for record on the 13th day of March, 1979 at 1:30 o'clock P. M.

Doreen Lange Kuehn  
(Register of Deeds)

By: \_\_\_\_\_ Deputy

3511271030