

CERTIFIED LAND CORNER RESTORATION

Correction to W-13 dated 1976

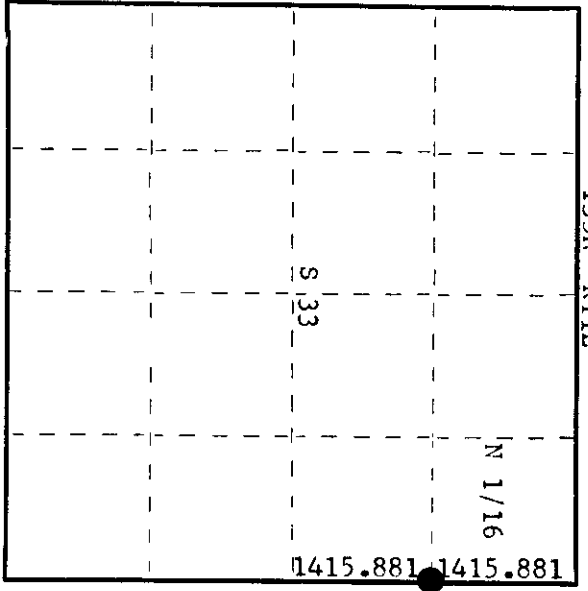
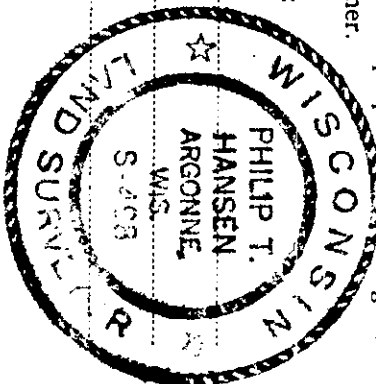
Index No. W-13

State of Wisconsin } ss.
County of Oneida

I Phillip T. Hansen, do hereby certify that on the 6th day of September, 1978, I ~~found~~ re-established the N 1/16 corner of Section 33 & 34 Township 35, North, Range 11, East, Fourth Principal Meridian, as described hereon; and that from this evidence I established a new monument and accessories as described hereon to perpetuate the original location of this corner.

Resident witnesses:

Glen Barker
Jim Clafflin
Herb Wagoner



○ = Corner monument restored.

History of original corner establishment:
This corner set by H.C. Lawrence, Registered Land Surveyor, in 1952.
Set a 4" cedar post and marked Hemlock 10" S30°E 20 links.
Recovered by P.T. Hansen in 1976.
Set 1" iron pipe with brass cap.

Description of corner evidence found:
Recovered 1" iron pipe with 2" brass cap. While subdividing Section 33 it was discovered that the distance recorded by H.C. Lawrence was in error, so the total distance to 1/4 corner was traversed and computed. Computed distance was 2831.761 feet at bearing N 4° 45' 05" E. Reset N 1/16 corner at 1415.881 feet intermediate which was N 43° E 8.25' from Lawrence's location.

Description of monument and accessories I established to perpetuate the original location of this corner.
Reset 1" iron pipe at the true location.
Monument projects 24" above ground.
Marked NBT's -
Cedar 6" N42°E 29.85 feet
Maple 6" N47°W 19.15 feet, scribed 1/16 BT.

Dated at Rhineland Wis. this 11th day of September, 1978.

Signature Phillip T. Hansen Title Registered Land Surveyor Registration No. S-498
(County Surveyor, Registered Land Surveyor, or other duly authorized official)
Office of Register of Deeds, County of Oneida
Instrument was filed in this office for record on the 21st day of May, 1979
at 2:00 o'clock P.M.

Terre George Kuehn
(Register of Deeds)

By: _____ Deputy

3511333000

CERTIFIED LAND CORNER RESTORATION

Index No. **W-13**

State of Wisconsin

County of Oneida } ss.

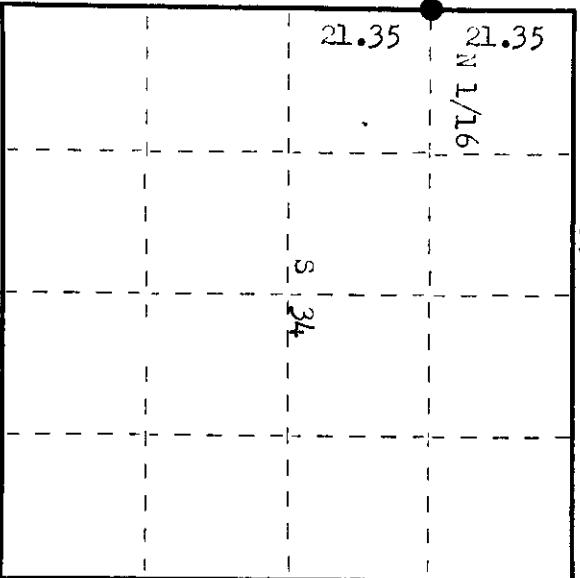
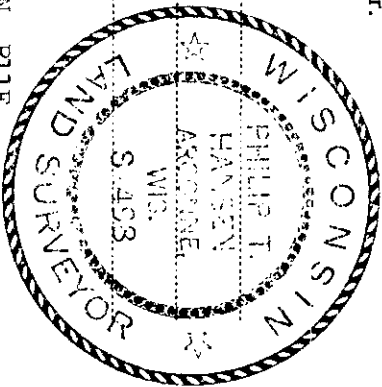
I Phillip T. Hansen, do hereby certify that on the 16th day of March, 1976, I found evidence of the N 1/16 corner of Sec. 33 and 34 Township 35, North, Range 11 East, Fourth Principal Meridian, as described hereon; and that from this evidence I established a new monument and accessories as described hereon to perpetuate the original location of this corner.

Resident witnesses:

Glen Barker

Jim Clafin

Herb Wagoner



○ = Corner monument restored.

History of original corner establishment:

Corner established by H. C. Lawrence, Registered Land Surveyor, in 1958. From S 1/16 corner established by Keith Hall, continued N 28° E and at 85.40 chains, intersected point in fence line which was 2.48 chains west of section corner. Corrected line to N 30° 40' E. Set N 1/16 at 64.05 chains, 1.86 chains east, marked Hemlock 10" S 30° E 20 lks.

Description of corner evidence found:

Recovered Lawrence's 4" cedar post, squared and scribed N 1/16 S 33, N 1/16 S 34. In good condition.
Recovered OBT. Hemlock 10" S 30° E 20 lks. scribed N 1/16.

Description of monument and accessories I established to perpetuate the original location of this corner.
Replaced 4" wood post with 1" OD iron pipe with 2" brass cap stamped.
Pipe projects 18" above ground.
NBT. Cedar 3" N 45° E 57.6 lks. scribed 1/16 BT.
Pipe and BTs painted blue.

3498
T35N R11E
S33 S34
N 1/16
CPI - 1976

Dated at Rhineland, Wis., this 16th day of March, 1976.

Signature Phillip T. Hansen Title Registered Land Surveyor Registration No. S-498
(County Surveyor, Registered Land Surveyor, or other duly authorized official)

Office of Register of Deeds, County of Oneida.
Instrument was filed in this office for record on the 5th day of April, 1976 at 1:30 o'clock P. M.

Doree Verage Kuehn
(Register of Deeds)

By _____ Deputy

3511503000