

CERTIFIED LAND CORNER RESTORATION

Index No. W-10

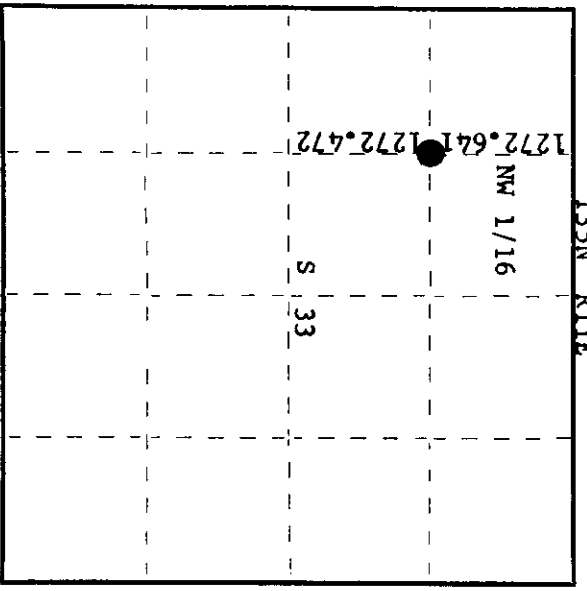
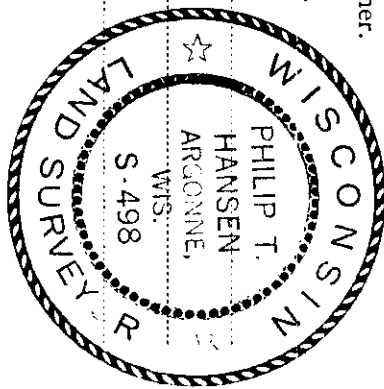
State of Wisconsin } ss.
County of Oneida

I Phillip T. Hansen, do hereby certify that on the 11th day of September, 19 78, I ~~found~~ ~~restored~~ ~~the~~ established corner of Section 33 NW 1/16

corner of Section 33 Township 35, North, Range 11 East, Fourth Principal Meridian, as described hereon; and that from this evidence I established a new monument and accessories as described hereon to perpetuate the original location of this corner.

Resident witnesses:

Glen Barker
Jim Clafflin
Herb Wagoner



History of original corner establishment:
No records of any previous survey.

Description of corner evidence found:

No evidence of any corner recovered.
Corner established by traverse and computation. Computed distance from W 1/16 between section 28 and 33 and WC 1/16 is 2545.113 feet at bearing S 0° 26' 57" W. Computed distance for NW 1/16 is 1272.641' south of W 1/16 and 1272.472' north of WC 1/16.

Description of monument and accessories I established to perpetuate the original location of this corner.

Set 1 1/2" iron pipe with 2" brass cap, stamped: S498
Monument projects 30" above ground. T35N R11E
Marked NBT's - Black Spruce 14" S59°W, 19.13 feet NW 1/16 S 33
Maple 6" N26°E, 18.67 feet, scribed 1/16 BT CPI-1978

Dated at Rhinelander, Wis., this 18th day of September, 19 78

Signature Phillip T. Hansen Title Registered Land Surveyor Registration No. S-498
(County Surveyor, Registered Land Surveyor, or other duly authorized official)

Office of Register of Deeds, County of Oneida
Instrument was filed in this office for record on the 25th day of September, 19 78
at 2:50 o'clock P. M.

Dorci Verage Fuchs
(Register of Deeds)

By: _____ Deputy
O = Corner monument restored.

3511333030