

CERTIFIED LAND CORNER RESTORATION

Index No. **Y-22**

State of Wisconsin

County of Oneida } ss.

I Phillip T. Hansen do hereby certify that on the 17th day of November, 19 76, I found evidence of the SW 1/16 corner of Section 36 Township 35, North, Range 11 East, Fourth Principal Meridian,

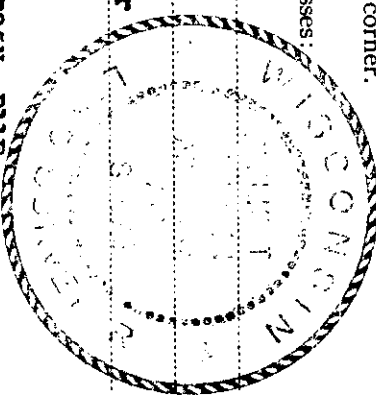
as described hereon; and that from this evidence I established a new monument and accessories as described hereon to perpetuate the original location of this corner.

Resident witnesses:

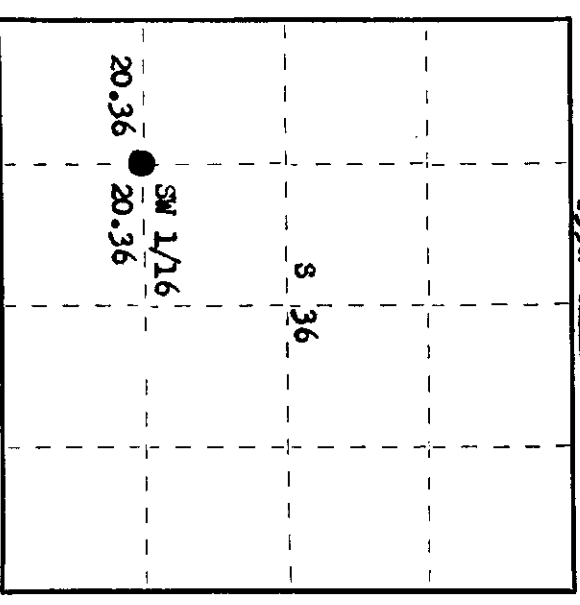
Glen Barber

Jim Clarlin

Herb Wagoner



T35N R11E



○ = Corner monument restored.

History of original corner establishment:

H.C. Lawrence, Registered Land Surveyor, ran random line N 86° 30' W from SC 1/16 corner. At 40.72 chains, closed out 112 links north of S 1/16 corner. Corrected bearing N 88° 05' W. Established SW 1/16 at 20.36 chains intermediate. Marked a 3" sugar maple tree for corner. Marked Basswood 10" N 50° E 12 links and Sugar 8" S 25° W 17 links.

Description of corner evidence found:

Recovered 3" Sugar Maple, squared on four sides for true corner.
 Recovered 10" (12") basswood, N 50° E 12 links, scribbing partly visible.
 Sugar 8" (10") S 25° W 17 links, scribbing grown over.

Description of monument and accessories I established to perpetuate the original location of this corner.

Set a 1" iron pipe with brass cap for a Witness Corner 3 links south of true position at squared maple. Cap stamped:
 Monument projects 24" above ground.
 Placed a location poster on 3" squared sugar maple.

5498
 Wt. Cor.
 WTC
 N. 3 lks.

Dated at Rhinelander, Wis., this 3rd day of December, 19 76

Signature: Phillip T. Hansen Title: Registered Land Surveyor Registration No. 5498
 (County Surveyor, Registered Land Surveyor, or other duly authorized official)

Office of Register of Deeds, County of Oneida. I hereby certify that the within instrument was filed in this office for record on the 26th day of December, 19 76 at 1:00 o'clock P. M.

Terrie W. Hagen
 (Register of Deeds)

By: _____ Deputy

2511361030