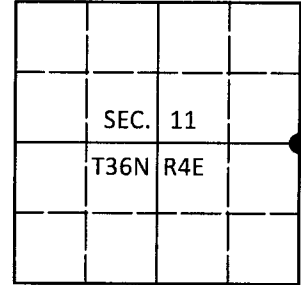


# U.S. PUBLIC LAND SURVEY MONUMENT RECORD

Note: This form is intended and designed to fulfill all requirements of Wisconsin Administrative Code, Chapter A-E 7.08 U.S. Public Land Survey Monument Record (3)(a-i).

(a) CORNER LOCATION  
 1/4 Cor. of Secs. 11 & 12  
 Township 36 North  
 Range 4 East of the 4th P.M.  
 Town of Lynne  
 County of Oneida

WISCRS - Oneida County  
 N: 158,959.02 USft  
 E: 128,379.97 USft  
 Datum: NAD 83(2011)  
 GNSS Method: Real-Time Network  
 GNSS Control: WISCORS VRS



(b) HISTORY OF ORIGINAL CORNER ESTABLISHMENT

Original Surveyor: Edward Palmer

Original Accessories:

Date of Survey      Commenced: May, 1865  
 Completed: June, 1865

Hemlock 9" N70°W, 22 lks.  
 Ironwood 6" N20°E, 13 lks.

(b)(f)(g)(h) Description of monument found at this corner and if it was accepted, state all evidence (material, testimonial, occupational, plats, records, other monuments) used as a basis for accepting. If not accepted or if nothing was found, state evidence used as basis for establishing location. If re-established through lost corner proportionate methods, indicate all monuments, distances and directions used to establish. Indicate type of monument and sign post found or set.

*September 14, 1917: Notes by D.H. Vaughan in Old Fieldbook 8 on Page 89. Working in Sec. 11, Vaughan found 3604112000 (W 1/4 cor. S. 12) with the ironwood in place and the hemlock down. He set a new post and marked: y. birch 18" S29°E, 19 lks. He also set a post at 3604113000 (N 1/16 cor.) and marked: hemlock 10" S26-1/2°E, 22 lks.; hemlock 8" S25°W, 21 lks.*

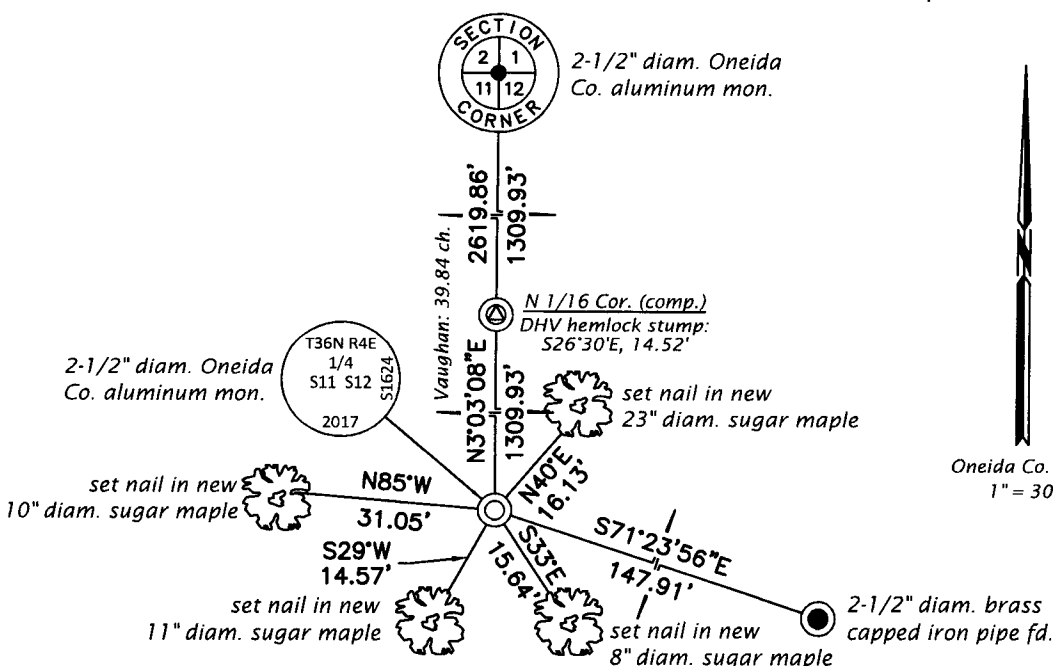
*December 9, 1918: Notes by Lynn Vaughan in Old Fieldbook 74 on Page 49. Working in Sec. 12, Vaughan found the post at 3604112000 (W 1/4 cor. S. 12) set by DHV.*

*October 12, 2017: Accompanied by Jeff Austin, I visited the corner and found no evidence of the GLO survey or that of D.H. Vaughan. To position the corner, I determined the location of 3604113000 (N 1/16 cor.) from the stump remains of Vaughan's remaining hemlock bearing tree and in conjunction with the location of 3604020000 (NW cor.), projected the resulting line South as shown below. The following evidence supports this method: The distance East to 3604122020 (C 1/4 cor.) agrees with Vaughan's record within 8 feet. The distance from 3604122020 (C 1/4 cor.) to 3604120020 (S 1/4 cor.) agrees with Vaughan's record within 11 feet. The distance from 3604122020 (C 1/4 cor.) to 3604010020 (N 1/4 cor.) agrees with Vaughan's record within 11 feet. At the corner point, we set a 2-1/2" diam., 30" long aluminum pipe with a 3-1/4" diam. Oneida Co. aluminum cap projecting 4" above the ground surface. Accessories were established as shown below. A white vinyl sign post was set Southeast, 1 ft.*

*From the corner point, a 2-1/2" diam. brass capped iron pipe of unknown origin bears S71°23'56"E, 147.91 ft.*

*The coordinate value shown has been verified by at least one of the following methods: 1) comparison to a previously GPS determined published value; 2) the value is the average of two or more GPS observations at a markedly different time; 3) one or more distances were measured back to the GPS observed corner from temporary GPS observed offset locations.*

(c)(d)(e) Plan view of corner with ties to at least 4 witness monuments. If in disagreement with previously established corner, show the distances between the two corners and also indicate the ties to the disputed.

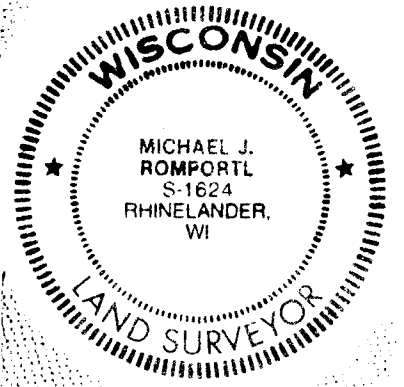


REGISTER OF DEEDS OFFICE  
 ONEIDA COUNTY  
 FILED

DEC 28 2017

AT \_\_\_\_\_ O'CLOCK \_\_\_\_\_ M  
 KYLE J. FRANSON  
 REGISTER OF DEEDS

Oneida Co. Grid  
 1" = 30'



(i) I, Michael J. Romportl, Professional Land Surveyor No. S-1624, hereby certify that the corner location on this record was determined by me or under my direction and control and that this U.S. Public Land Survey Monument Record is correct and complete to the best of my knowledge and belief.

*Michael J. Romportl*  
 Signature

12/27/2017  
 Date