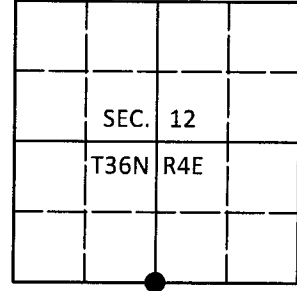


U.S. PUBLIC LAND SURVEY MONUMENT RECORD

Note: This form is intended and designed to fulfill all requirements of Wisconsin Administrative Code, Chapter A-E 7.08 U.S. Public Land Survey Monument Record (3)(a-i).

(a) CORNER LOCATION
 1/4 Cor. of Secs. 12 & 13
 Township 36 North
 Range 4 East of the 4th P.M.
 Town of Lynne
 County of Oneida

WISCRS - Oneida County
 N: 155,650.53 USft
 E: 131,388.14 USft
 Datum: NAD 83(2011)
 GNSS Method: Real-Time Network
 GNSS Control: WISCORS VRS



(b) HISTORY OF ORIGINAL CORNER ESTABLISHMENT

Original Surveyor: Edward Palmer

Original Accessories:

Date of Survey Commenced: May, 1865
 Completed: June, 1865

Hemlock 8" S43°W, 8 lks.
 Sugar 10" N46°E, 12 lks.

(b)(f)(g)(h) Description of monument found at this corner and if it was accepted, state all evidence (material, testimonial, occupational, plats, records, other monuments) used as a basis for accepting. If not accepted or if nothing was found, state evidence used as basis for establishing location. If re-established through lost corner proportionate methods, indicate all monuments, distances and directions used to establish. Indicate type of monument and sign post found or set.

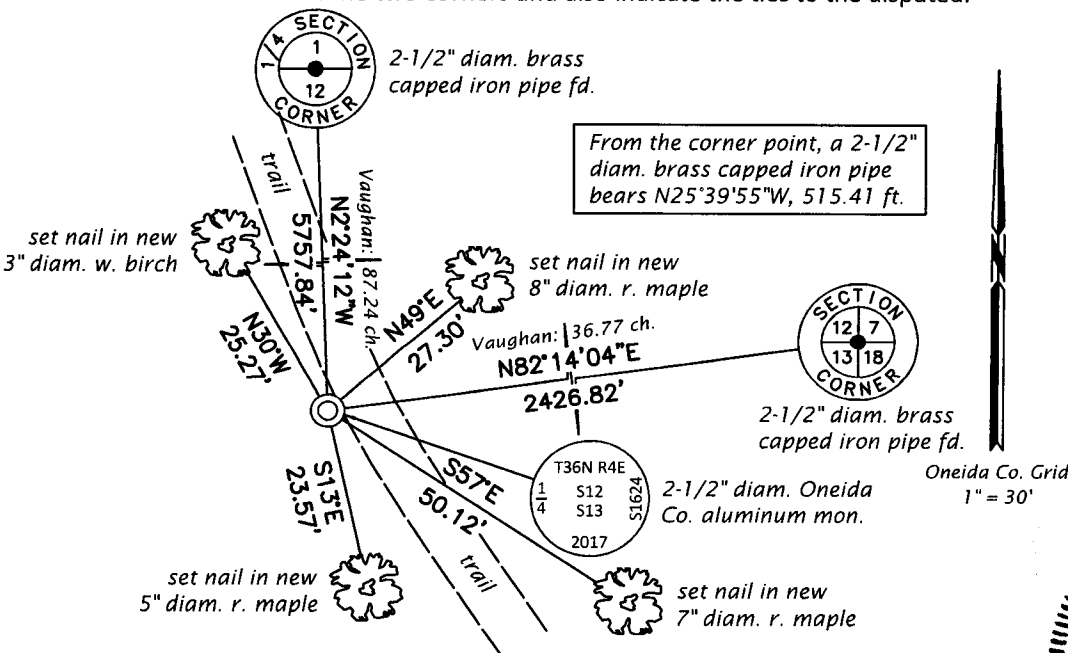
December 9, 1918: Notes by Lynn Vaughan in Old Fieldbook 74 on Page 49. Vaughan found the South 1/4 post and original trees during his subdivision of Sec. 12.

October 10, 2017: Accompanied by Jeff Austin, I visited the corner and found no evidence of the GLO survey or that of Lynn Vaughan. To position the corner, I intersected Vaughan's record distances from 3604120000 (SE cor.) and 3604010020 (N 1/4 cor.) as shown below. The following evidence supports this method: Although not cardinal and not coincident, barbed wire that has been down many years was found running East and West from the trail about 40 feet North of the computed location. Based on air photo inspection, the distance East to the creek agrees well with that returned by GLO. The distance North to 3604122020 (C 1/4 cor.) agrees with Vaughan's record within 11 feet. The distance from 3604122020 (C 1/4 cor.) to 3604112000 (W 1/4 cor.) agrees with Vaughan's record within 8 feet. The distance from 3604122020 (C 1/4 cor.) to 3604122000 (E 1/4 cor.) agrees with Vaughan's record within 14 feet. At the corner point, we set a 2-1/2" diam., 30" long aluminum pipe with a 3-1/4" diam. Oneida Co. aluminum cap projecting 3" above the ground surface. Accessories were established as shown below. A white vinyl sign post was set Northeast, 1.8 ft.

From the corner point, a 2-1/2" diam. brass capped iron pipe of unknown origin bears N25°39'55"W, 515.41 ft.

The coordinate value shown has been verified by at least one of the following methods: 1) comparison to a previously GPS determined published value; 2) the value is the average of two or more GPS observations at a markedly different time; 3) one or more distances were measured back to the GPS observed corner from temporary GPS observed offset locations.

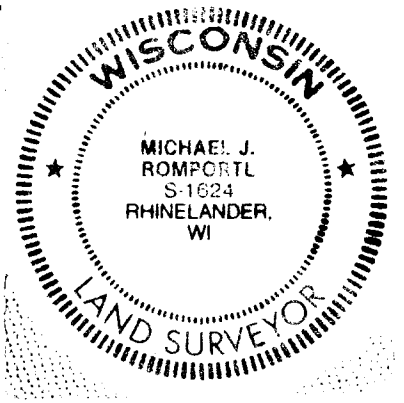
(c)(d)(e) Plan view of corner with ties to at least 4 witness monuments. If in disagreement with previously established corner, show the distances between the two corners and also indicate the ties to the disputed.



REGISTER OF DEEDS OFFICE
 ONEIDA COUNTY
 FILED

DEC 28 2017

AT _____ O'CLOCK _____ M
 KYLE J. FRANSON
 REGISTER OF DEEDS



(i) I, Michael J. Romportl, Professional Land Surveyor No. S-1624, hereby certify that the corner location on this record was determined by me or under my direction and control and that this U.S. Public Land Survey Monument Record is correct and complete to the best of my knowledge and belief.

Michael J. Romportl
 Signature

12/27/2017
 Date