

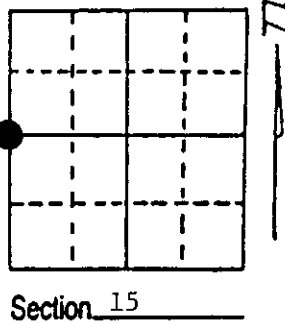
# U.S. PUBLIC LAND SURVEY MONUMENT RECORD

**Note:** This form is intended and designed to fulfill all requirements of Wisconsin Administrative Code, Chapter A-E 7.08 U.S. Public Land Survey Monument Record (3) (a) (b) (c) (d) (e) (f) (g) (h) (i). An additional sheet may be added if necessary to conform with said requirements.

(a) Corner location: Township 36 North  
 Range 4 East/West

Town/City/Village Lynne

County Oneida



(b) (f) (g) (h) Description of monument found at this corner and if it was accepted, state all evidence (material, testimonial, occupational, plats, records, other monuments) used as a basis for accepting. If not accepted or if nothing was found, state evidence used as basis for establishing location. If reestablished through lost corner proportionate methods, indicate all monuments, distances and directions used to establish. Indicate type of monument found or set and sign post.

6/1865 - Edward D. Palmer established this corner and set a wood post with two BTs:  
 5" Sugar, N80°W, 12 Links      10" Hemlock, S76°E, 10 Links

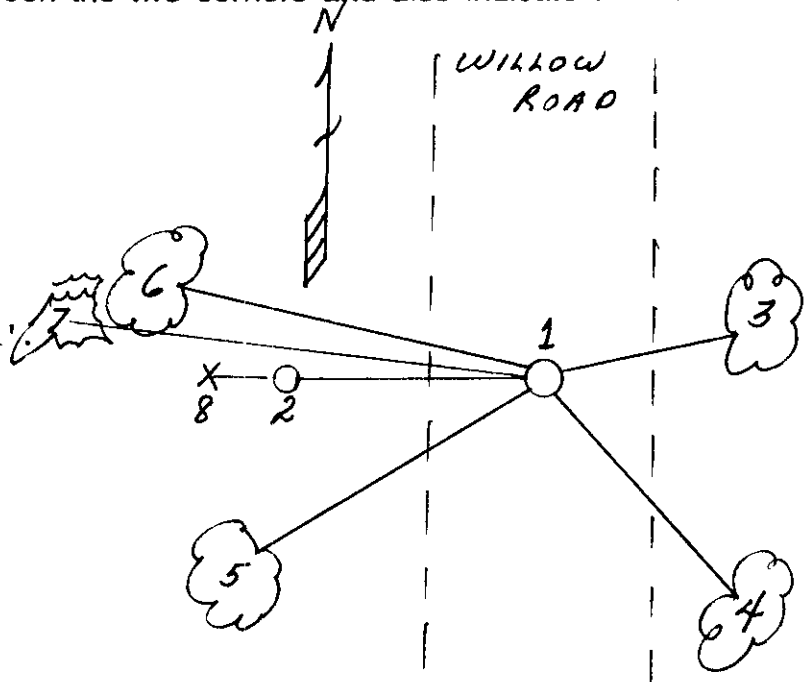
11/22/1915 - D. H. Vaughan restored this corner by Lost Methods. He set a wood post and one BT, a 36" White Pine Stump, West, 84 links.

10/17/1991 - Milo E. Stefan found very large White Pine Stump on West side of highway. We measured distance from Section Corner North and South and find distances to conform to Vaughan notes. Our measure: 5292.86 feet. Vaughans: 5290.66 feet. I restored this corner from the Pine Stump and placed a railroad spike in road surface and made new BTs and set a Witness Corner.

(c) (d) (e) Plan view of corner with ties to at least 4 witness monuments. If in disagreement with previously established corner, show the distances between the two corners and also indicate the ties to the disputed corner.

- 1) Railroad spike.
- 2) 2" x 30" aluminum monument for Witness Corner, West, 42.96'.
- 3) 4" Black Ash, N80°E, 44.12'.
- 4) 4" Black Ash, S42°E, 66.90'.
- 5) 6" Red Maple, S62°W, 67.37'.
- 6) 5" Black Ash, N82°W, 39.18'.
- 7) 36" White Pine Stump, West, 55.44'.
- 8) Plastic sign post, West of W.C., 1.1'.

Distances to nail in side of BTs.  
 Stump blaze scribed "BT".



(i) I, Milo E. Stefan  
 (type or print name) certify that the corner location on this record was determined by me or under my direction and control and that this U.S. Public Land Survey Monument Record is correct and complete to the best of my knowledge and belief.

Milo E. Stefan  
 Signature

November 6, 1991  
 Date



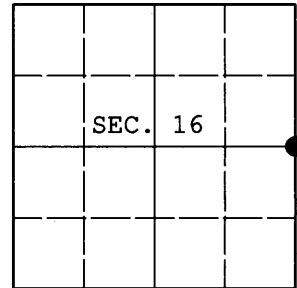
Index No. I-13

Stamp 3604162000

**U.S. PUBLIC LAND SURVEY MONUMENT RECORD**

Note: This form is intended and designed to fulfill all requirements of Wisconsin Administrative Code, Chapter A-E 7.08 U.S. Public Land Survey Monument Record (3) (a) (b) (c) (d) (e) (f) (g) (h) (i). An additional sheet may be added if necessary to conform with said requirements.

(a) CORNER LOCATION: Plane Coordinates  
 1/4 Cor. of Secs. 15 & 16 N:  
 Township 36 North E:  
 Range 4 East of the 4th P.M. Datum:  
 Town of Lynne County of Oneida



(b) HISTORY OF ORIGINAL CORNER ESTABLISHMENT

Original Surveyor: Edward Palmer Original Accessories:  
 Date of Survey: Commenced May, 1865 sugar 5" N80°W, 12 lks.  
 Completed June, 1865 hemlock 10" S76°E, 10 lks.

(b) (f) (g) (h) Description of monument found at this corner and if it was accepted, state all evidence (material, testimonial, occupational, plats, records, other monuments) used as a basis for accepting. If not accepted or if nothing was found, state evidence used as basis for establishing location. If re-established through lost corner proportionate methods, indicate all monuments, distances and directions used to establish. Indicate type of monument and sign post found or set.

NOTE: This is a perpetuation of a previous USPLS Monument Record by Milo E. Stefan, RLS dated November 6, 1991 and filed in the office of the Oneida County Register of Deeds. A complete history of the corner can be found on the previous monument record. I accept the previous location as a true and faithful perpetuation or reestablishment of the original corner location and further perpetuate it as follows.

November 29, 2011: I found and accepted a Berntsen DuraNail 2 ft. West of the centerline of Willow Road. I found Stefan's reference monument lying flat and damaged beyond use. Stefan's SE ash bearing tree is standing dead. I found or established accessories as shown below and set a white plastic sign post adjacent to each reference monument.

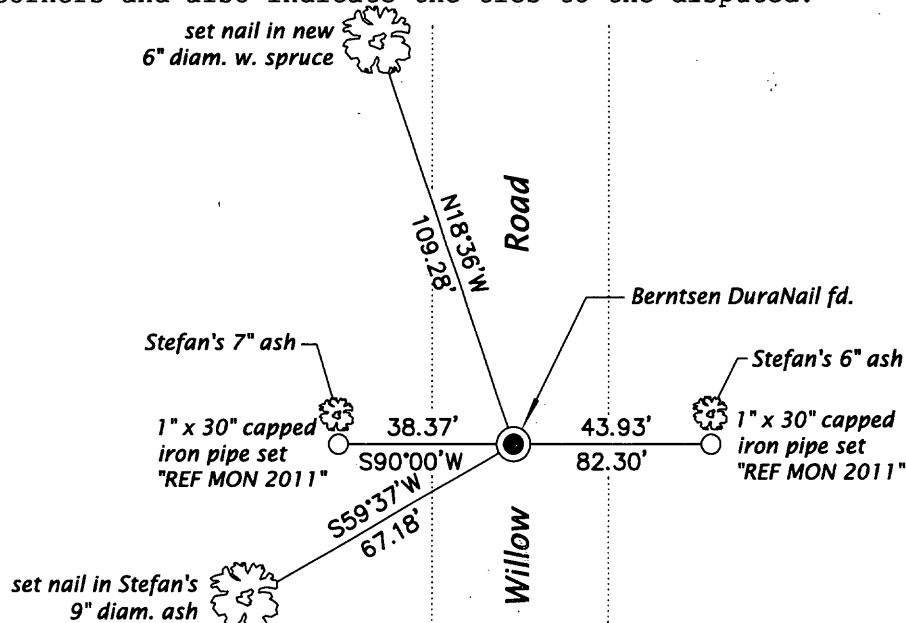
REGISTER OF DEEDS OFFICE  
ONEIDA COUNTY

**FILED**

JAN 16 2012

AT \_\_\_\_\_ O'CLOCK \_\_\_\_\_ M  
**THOMAS H. LEIGHTON**  
 REGISTER OF DEEDS

(c) (d) (e) Plan view of corner with ties to at least 4 witness monuments. If in disagreement with previously established corner, show the distances between the two corners and also indicate the ties to the disputed.



(i) I, Jeffrey W. Austin, Registered Land Surveyor No. S-1885, hereby certify that the corner location on this record was determined by me or under my direction and control and that this U.S. Public Land Survey Monument Record is correct and complete to the best of my knowledge and belief.



3604162000 (INDEX NO. I-13)

*[Handwritten Signature]*  
 \_\_\_\_\_  
 Signature

DEC. 31, 2011  
 \_\_\_\_\_  
 Date