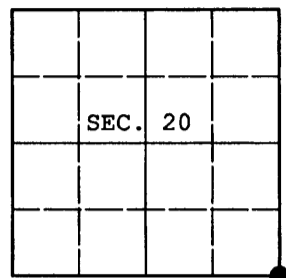


U.S. PUBLIC LAND SURVEY MONUMENT RECORD

Note: This form is intended and designed to fulfill all requirements of Wisconsin Administrative Code, Chapter A-E 7.08 U.S. Public Land Survey Monument Record (3) (a) (b) (c) (d) (e) (f) (g) (h) (i). An additional sheet may be added if necessary to conform with said requirements.

(a) CORNER LOCATION: Oneida County Coordinates
 Cor. of Secs. 20, 21, 28 & 29 N: 145,429.364 USft
 Township 36 North E: 112,810.635 USft
 Range 4 East of the 4th P.M. Datum: NAD 1983(1991)
 Town of Lynne County of Oneida



(b) HISTORY OF ORIGINAL CORNER ESTABLISHMENT

Original Surveyor: Edward D. Palmer Original Accessories:
 Date of Survey: Commenced: May 27, 1865 fir 6" N51°W, 22 lks.
 Completed: June 4, 1865 tamarack 7" N18°E, 12 lks.
 tamarack 7" S54°W, - lks.

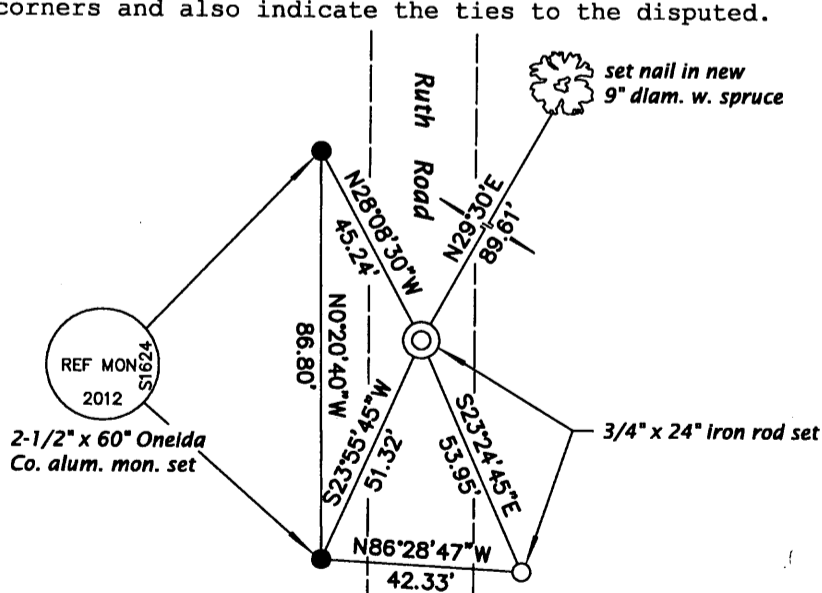
(b) (f) (g) (h) Description of monument found at this corner and if it was accepted, state all evidence (material, testimonial, occupational, plats, records, other monuments) used as a basis for accepting. If not accepted or if nothing was found, state evidence used as basis for establishing location. If re-established through lost corner proportionate methods, indicate all monuments, distances and directions used to establish. Indicate type of monument and sign post found or set.

July 8, 1908: Notes by Vaughan in fieldbook 6 on page 36 indicate he reset the original corner from the NE bearing tree standing dead. He made a new bearing tree: dead tamarack 12 S47-1/2°W, 30.

November 16, 2012: An extensive search for evidence of the General Land Office survey and any subsequent resurveys mentioned above was performed. Having found none, the corner was proportioned latitudinally based on Vaughan's record, and set on the centerline of Ruth Road. The controlling corners, 3604202000 and 3604290000 bear N0°35'45"W, 2601.67' (Vaughan: 39.38 ch.) and S0°55'15"W, 5295.20' (Vaughan: 80.16 ch.) respectively. Vaughan notes a stream 1.50 ch. North of the corner; we measure 100 ft. to the culvert. At the corner point a 3/4" diam., 24" long iron rod was set 8" beneath the road surface. Accessories were established as shown below and white plastic sign posts were set adjacent to the West reference monuments.

The coordinates shown were derived from two independent RTK observations of the corner point and are based on the WISCORS network.

(c) (d) (e) Plan view of corner with ties to at least 4 witness monuments. If in disagreement with previously established corner, show the distances between the two corners and also indicate the ties to the disputed.

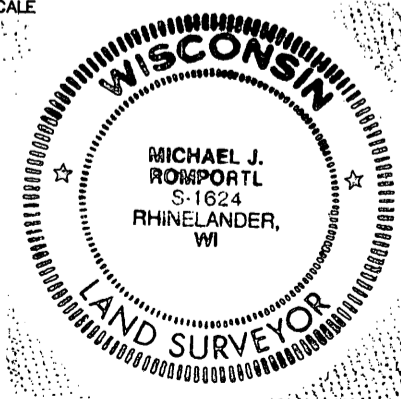


REGISTER OF DEEDS OFFICE
 ONEIDA COUNTY
 FILED

APR 15 2013

AT _____ O'CLOCK _____ M
 KYLE J. FRANSON
 REGISTER OF DEEDS

NO SCALE



(i) I, Michael J. Romportl, Registered Land Surveyor No. S-1624, hereby certify that the corner location on this record was determined by me or under my direction and control and that this U.S. Public Land Survey Monument Record is correct and complete to the best of my knowledge and belief.

Signature: Michael J. Romportl Date: 2/12/2013

360420000 (INDEX NO. R-9)