

# U.S. PUBLIC LAND SURVEY MONUMENT RECORD

NOTE: This form is intended and designed to fulfill all requirements of Wisconsin Administrative Code, Chapter A-E 7.08 U.S. Public Land Survey Monument Record (3)(a)(b)(c)(d)(e)(f)(g)(h)(i). An additional sheet may be added if necessary to conform with said requirements.

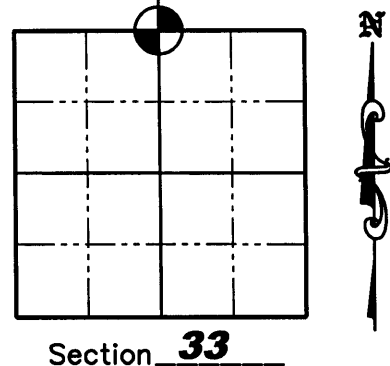
(a) Corner location: Township 36 North

Range 4 East

Town of LYNNE

County ONEIDA

Oneida County  
Coordinates Northing 140095.140  
Easting 115410.467



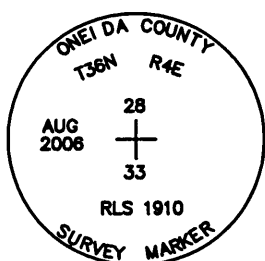
(b)(f)(g)(h) Description of monument found at this corner and if it was accepted, state all evidence (material, testimonial, occupation, plats, records, other monuments) used as a basis for accepting. If not accepted or if nothing was found, state evidence used as a basis for establishing location. If reestablished through lost corner proportionate methods, indicate all monuments, distances and directions used to establish. Indicate type of monument found or set and sign post.

1865 - Edward D. Palmer, set 1/4 Section Corner. B.T.'s; Hemlock 26", S20°E 26lks; Hemlock 14", N46°E 17 lks.

1916 - D.H. Vaughan Ran North 79.60 chains from South 1/4 Corner of Section 33 and fell 2 lks West of N 1/4 Corner - Per Old Field Book 39, Page 14

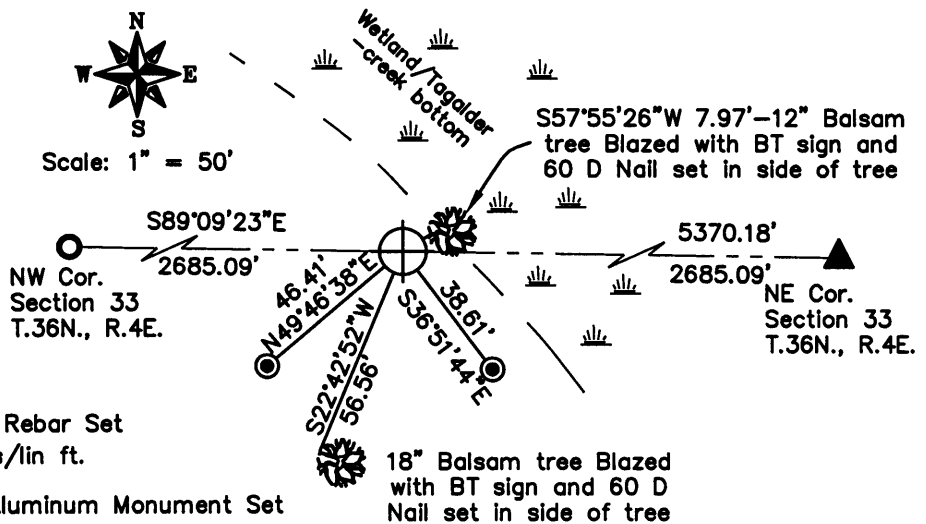
8/14/2006 - Matthew E. Hoglund, did extensive search for corner and found no evidence of the Corner. Possible original bering tree stump was determined to be the wrong species by the Wood Products Lab in Madison so we single proportioned the corner in setting an Oneida County Aluminum Monument and set ties as shown below. Oneida County coordinates determined from total station traverse from GPS pair surved by Jeff Austin R.L.S.

(c)(d)(e) Plan view of corner with ties to at least 4 witness monuments. If in disagreement with previously established corner, show the distances between the two corners and also indicate the ties to the disputed corner.



## LEGEND

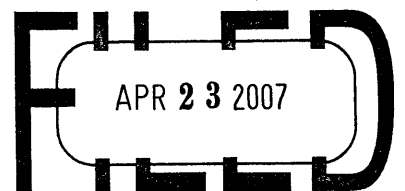
- 1" iron pipe set
- 3/4" x 24" Iron Rebar Set Weighing 1.50 lbs/lin ft.
- ⊕ Oneida County Aluminum Monument Set
- ▲ Berntsen Survey Nail Found



(i) I, Matthew E. Hoglund, certify that the corner location on this record was determined by me under my direction and control and that this U.S. Public Land Survey Monument is correct and complete to the best of my knowledge and belief.

Signature Matthew E. Hoglund Date 10/12/2006  
Project # 732

REGISTER OF DEEDS OFFICE  
ONEIDA COUNTY, WIS.



At \_\_\_\_\_ O'Clock \_\_\_\_\_ M  
THOMAS H. LEIGHTON  
REGISTER OF DEEDS

3604280020