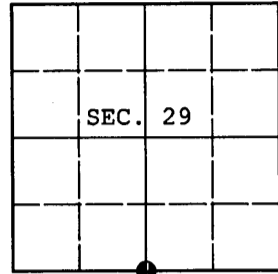


**U.S. PUBLIC LAND SURVEY MONUMENT RECORD**

Note: This form is intended and designed to fulfill all requirements of Wisconsin Administrative Code, Chapter A-E 7.08 U.S. Public Land Survey Monument Record (3) (a) (b) (c) (d) (e) (f) (g) (h) (i). An additional sheet may be added if necessary to conform with said requirements.

(a) CORNER LOCATION: Oneida County Coordinates  
 1/4 Cor. of Secs. 29 & 32 N: 140,079.906 USft  
 Township 36 North E: 110,075.498 USft  
 Range 4 East of the 4th P.M. Datum: NAD 1983(1991)  
 Town of Lynne County of Oneida



(b) HISTORY OF ORIGINAL CORNER ESTABLISHMENT

Original Surveyor: Edward D. Palmer Original Accessories:  
 Date of Survey: Commenced: May 27, 1865 pine 10" S55°E, 9 lks.  
 Completed: June 4, 1865 pine 10" N10°E, 28 lks.

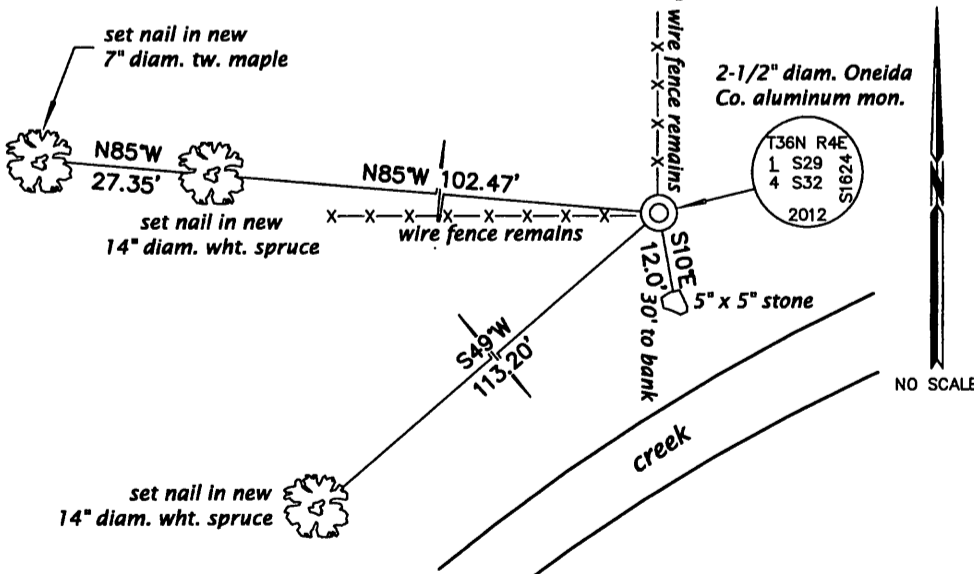
(b) (f) (g) (h) Description of monument found at this corner and if it was accepted, state all evidence (material, testimonial, occupational, plats, records, other monuments) used as a basis for accepting. If not accepted or if nothing was found, state evidence used as basis for establishing location. If re-established through lost corner proportionate methods, indicate all monuments, distances and directions used to establish. Indicate type of monument and sign post found or set.

June 1, 1905: Notes by Vaughan in Dorr/Vaughan book on page 2 indicate he recovered the original corner witnessed by a new bearing tree: w. pine stp. 24" S61°W, 58-1/2 lks.

November 30, 2012: An extensive search for evidence of the General Land Office survey and any subsequent resurveys mentioned above was performed. At the intersection of fragments of wire fence running North and West, numerous fence post staples and the hook of a peavey or cant hook was recovered. It is believed this hook was a memorial deposited at the corner point by persons unknown. No evidence of Vaughan's pine stump was recovered, but the distance from this corner to 3604320020 agrees with Vaughan's distance very favorably and the resulting line is very close to the centerline of the North-South town road near the center of section. At the corner point a 2-1/2" diam., 60" long aluminum pipe with 3-1/4" diam. Oneida County aluminum cap projecting 24" above the ground surface was set. Accessories were established as shown below and a white plastic sign post was set Northeast 1 ft. dist.

The coordinates shown were derived from two independent RTK observations of the corner point and are based on the WISCORS network.

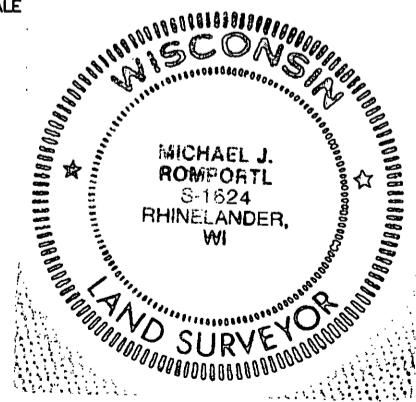
(c) (d) (e) Plan view of corner with ties to at least 4 witness monuments. If in disagreement with previously established corner, show the distances between the two corners and also indicate the ties to the disputed.



REGISTER OF DEEDS OFFICE  
 ONEIDA COUNTY  
 FILED

APR 15 2013

AT \_\_\_\_\_ O'CLOCK \_\_\_\_\_ M  
 KYLE J. FRANSON  
 REGISTER OF DEEDS



(i) I, Michael J. Romportl, Registered Land Surveyor No. S-1624, hereby certify that the corner location on this record was determined by me or under my direction and control and that this U.S. Public Land Survey Monument Record is correct and complete to the best of my knowledge and belief.

Michael J. Romportl 2/12/2013  
 Signature Date

3604290020 (INDEX NO. V-7)