

U.S. PUBLIC LAND SURVEY MONUMENT RECORD FOR LINCOLN COUNTY, WISCONSIN

Note: This form is intended and designed to fulfill all requirements of Wisconsin Administrative Code, Chapter A-E 5.02, U.S. Public Land Survey Monument Record (3) (a) (b) (c) (d) (e) (f) (g) (h) (i). Use additional sheet if necessary.

(a) The section, one quarter corner common to sections 5, 6, 31 & 32,

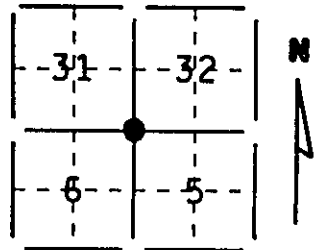
Township(s) 35 & 36 N, Range(s) 4 E

State plane coordinates: N _____

S _____

Town/City/Village Somo

County Lincoln



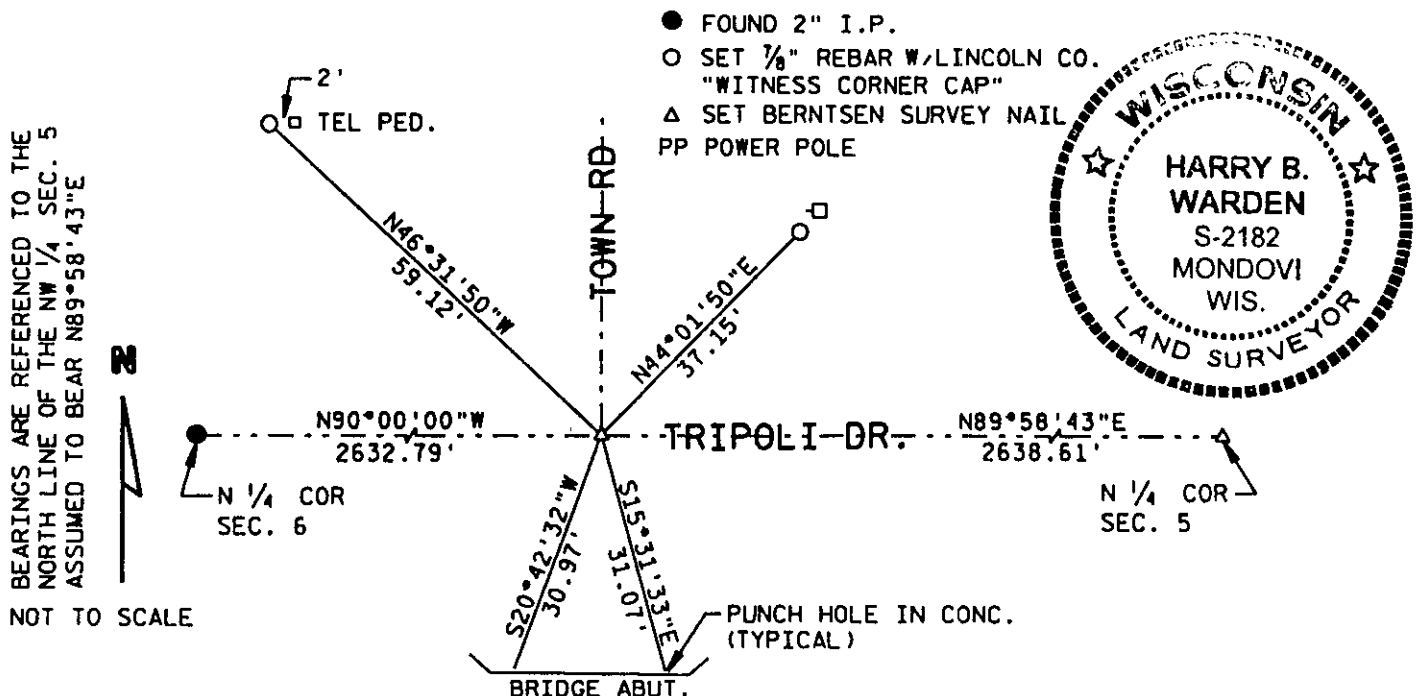
(b) (f) (g) (h) Description of monument found at this corner and if it was accepted, state all evidence (testimonial, occupational, plats, records, other monuments) used as a basis for accepting. If not accepted or nothing was found, state evidence used as a basis for establishing location and what was set. If reestablished through lost corner proportionate methods, indicate all monuments, distances and directions used.

Set Berntsen Survey Nail at occupied centerlines of Tripoli drive & town road to the north. Record distance south to $\text{\textcircled{C}}$ U.S.H. 8 ft 4". Distances to 2" I.P. found at the N $\frac{1}{4}$ cor. Sec. 6 & occupied location of N $\frac{1}{4}$ of Sec. 5 matched fairly well. Frost conditions prevented excavation, so location is tentative until excavation can done.

RECEIVED AT LINCOLN COUNTY
COURTHOUSE THIS 19 DAY
OF DEC 1995
Pat Rinder
TAX DESCRIPTION OFFICE

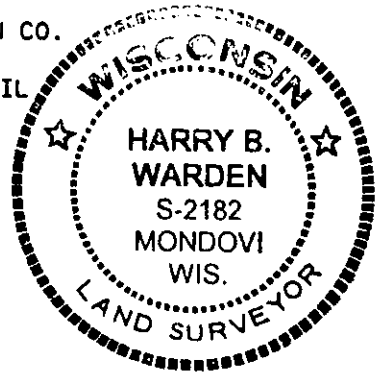
COPY

(c) (d) (e) Plan view of corner with ties to a least 4 witness monuments. If in disagreement with previously established corner, show the distances between the two corners and also indicated ties to disputed corner.



BEARINGS ARE REFERENCED TO THE NORTH LINE OF THE NW $\frac{1}{4}$ SEC. 5 ASSUMED TO BEAR N89°58'43\"E

NOT TO SCALE



(i) I certify that the corner location on this record was determined by me or under my direction and control and that this U.S. Public Land Survey Monument Record is correct and complete to the best my knowledge and belief.

Harry B Warden
Signature

December 19, 1995
Date

INDEX * Z - 5
T 30N R 4E

Filed for record in Lincoln County Surveyor's Office on _____ Date 3604310000