

# U.S. PUBLIC LAND SURVEY MONUMENT RECORD

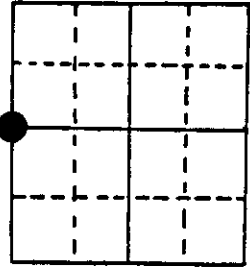
Note: This form is intended and designed to fulfill all requirements of Wisconsin Administrative Code, Chapter A-E 5.02, U.S. Public Land Survey Monument Record (3) (a) (b) (c) (d) (e) (f) (g) (h) (i). An additional sheet may be added if necessary to conform with said requirements.

(a) Corner location: Township 36 North  
 Range 6 East ~~West~~

Town/City/Village Nokomis

County Oneida

**ONEIDA COUNTY, WIS.**  
 Received for Record the 13th  
 day of March A.D. 1987  
 at 10 o'clock A.M. and Recorded in  
 Vol. .... of RECORDS on page.....  
*Don Kragge Kuehn*  
 REGISTER OF DEEDS



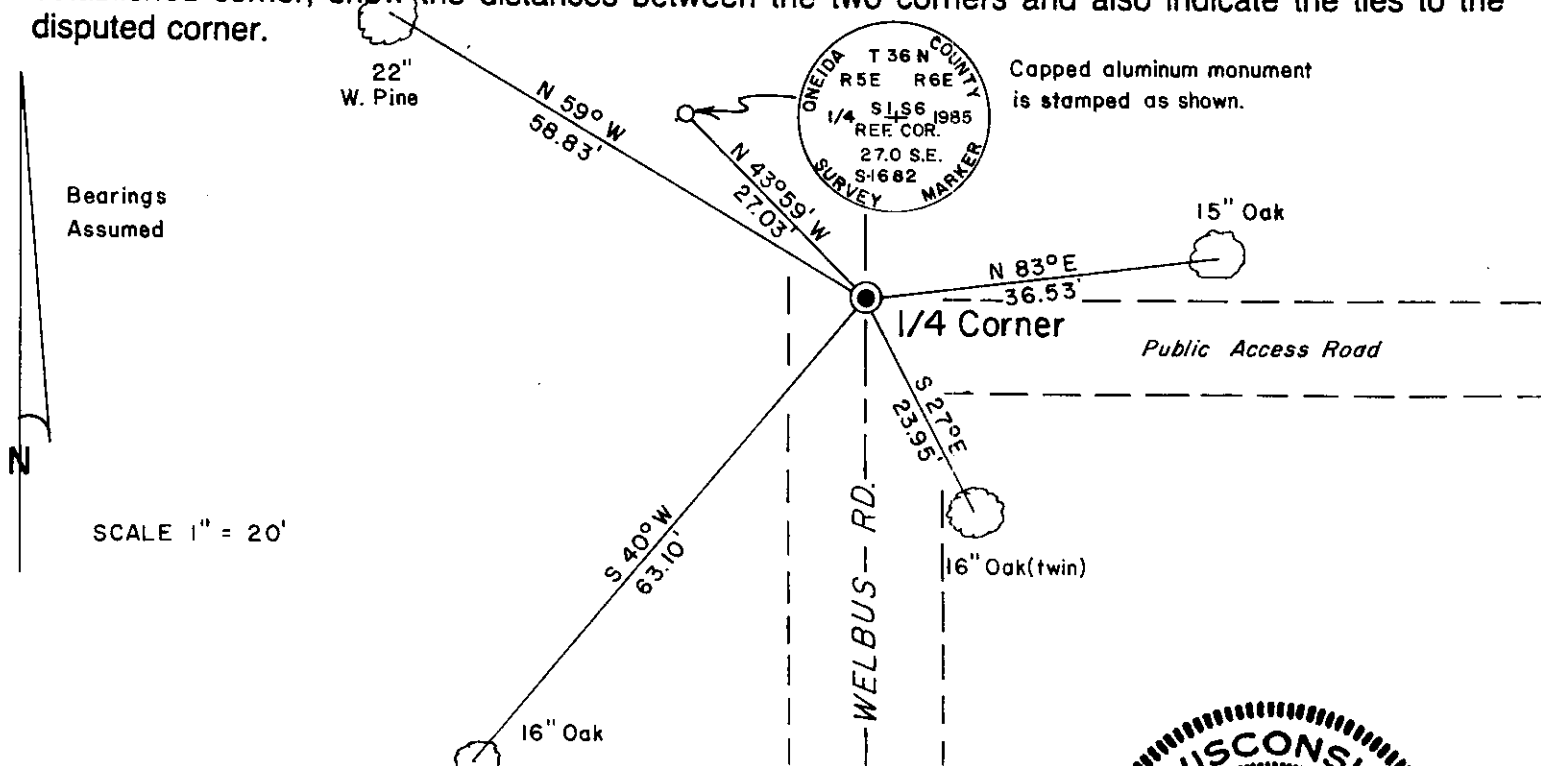
Section 6

(b) (f) (g) (h) Description of monument found at this corner and if it was accepted, state all evidence (material, testimonial, occupational, plats, records, other monuments) used as a basis for accepting. If not accepted or if nothing was found, state evidence used as basis for establishing location. If reestablished through lost corner proportionate methods, indicate all monuments, distances and directions used to establish.

September 1860-Alfred Millard - Deputy Surveyor-Set 1/4 Section Post. Bearing trees:  
 Y. Pine 10", S89°E, 39 links and Y. Pine 11", N37°E, 36 links.  
 July 5, 1932-H. C. Hall, Surveyor-Set 1 1/2" x 36" Iron pipe for 1/4 corner. Made B.T.'s  
 Forked B. Oak 12", S28°E, .363 ch. and B. Oak 8", S39°W, .95 ch.  
 February 4, 1987-James D. Rein, Surveyor-Found 1" dia. Iron pipe set in concrete 6"  
 below center line of Welbus Road. Found Hall's 2 bearing trees, 2 other  
 existing bearing trees, and an Oneida County capped aluminum reference monument,  
 set by Glen Barker, RLS #1682 in 1985.

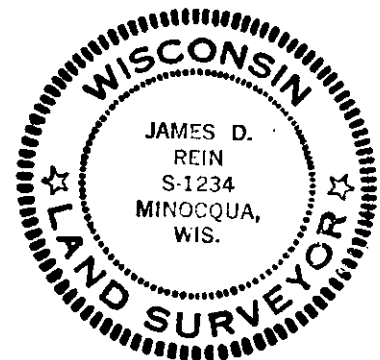
Note: Distances to bearing trees were measured to nails in center of root crown on side of tree.

(c) (d) (e) Plan view of corner with ties to at least 4 witness monuments. If in disagreement with previously established corner, show the distances between the two corners and also indicate the ties to the disputed corner.



(i) I, James D. Rein, Registered Land Surveyor No. S-1234  
 (type or print name) certify that the corner location on this record was determined by me or under my direction and control and that this U.S. Public Land Survey Monument Record is correct and complete to the best of my knowledge and belief.

*James D. Rein*  
 Signature 2/07/87  
 Date



Index No. 6-1

3605012000

# U.S. PUBLIC LAND SURVEY MONUMENT RECORD

REGISTER OF DEEDS OFFICE  
ONEIDA COUNTY  
FILED

Note: This form is intended and designed to fulfill all requirements of the Wisconsin Administrative Code, Chapter A-E 7.08 U.S. Public Land Monument Record (3)(a)(b)(c)(d)(e)(f)(g)(h)(i). An additional sheet may be added if necessary to conform with said requirements.

NOV 26 2018

KYLE J. FRANSON  
REGISTER OF DEEDS

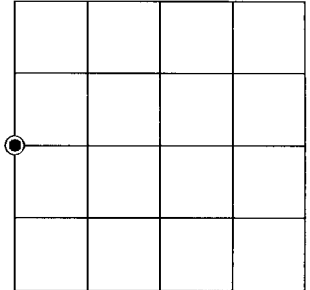
**(a) CORNER LOCATION:**

West Quarter Corner of Section 6  
Township 36 North  
Range 6 East  
Town of Nokomis  
County of Oneida

North:  
East:  
Datum:  
GNSS Method:  
GNSS Control:

(RECORDING AREA)

**SECTION 6**



**(b) HISTORY OF ORIGINAL CORNER ESTABLISHMENT**

Original Surveyor:  
Date of Survey: Commenced  
Completed  
Original B.T.'S

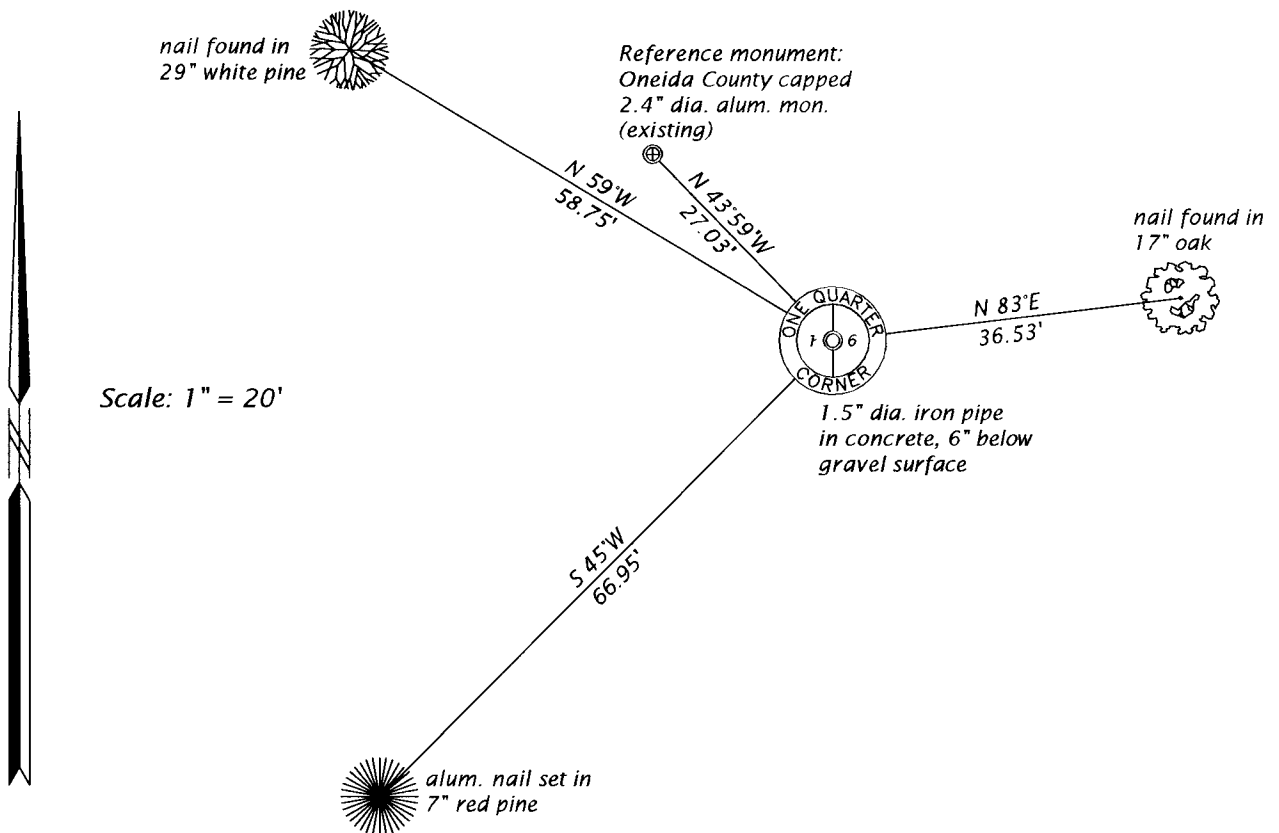
*SEE PREVIOUS U.S.P.L.S. MONUMENT  
RECORD DATED FEBRUARY 7, 1987.*

(f)(g)(h) DESCRIPTION OF MONUMENT FOUND AT THIS CORNER AND IF IT WAS ACCEPTED, STATE ALL EVIDENCE (MATERIAL, TESTIMONIAL, OCCUPATIONAL, PLATS, RECORD, OTHER MONUMENTS) USED AS A BASIS FOR ESTABLISHING LOCATION. IF NOT ACCEPTED OR IF NOTHING WAS FOUND, STATE EVIDENCE USED AS BASIS FOR ESTABLISHING LOCATION. IF REESTABLISHED THROUGH LOST CORNER PROPORTIONATE METHODS, INDICATE ALL MONUMENTS, DISTANCES AND DIRECTIONS USED TO ESTABLISH. INDICATE TYPE OF MONUMENT AND SIGN POST FOUND OR SET.

This is a perpetuation of a previous U.S.P.L.S. Monument Record by James D. Rein, RLS, dated February 7, 1987, and filed in the office of the Oneida County Register of Deeds. A complete history of the corner can be found on the previous monument record. I accept the previous location as a true and faithful perpetuation or reestablishment of the original corner location and further perpetuate it as follows.

June 21, 2018, I, James D. Rein, P.L.S. No. S-1234, found and accepted the 1.5" dia. (od) iron pipe in concrete I had recovered in 1987. The two southerly oak bearing trees are now gone - see below for updated witnesses.

(c)(d)(e) PLAN VIEW OF CORNER WITH TIES TO AT LEAST 4 WITNESS MONUMENTS. IF IN DISAGREEMENT WITH PREVIOUSLY ESTABLISHED CORNER, SHOW THE DISTANCE BETWEEN THE TWO CORNERS AND ALSO INDICATE THE TIES TO THE DISPUTED CORNER.



(i) I, JAMES D. REIN, PROFESSIONAL LAND SURVEYOR NO. S-1234 HEREBY CERTIFY THAT THE CORNER LOCATION ON THIS RECORD WAS DETERMINED BY ME OR UNDER MY DIRECTION AND CONTROL AND THAT THIS U.S. PUBLIC LAND SURVEY MONUMENT RECORD IS CORRECT AND COMPLETE TO THE BEST OF MY KNOWLEDGE AND BELIEF.

*[Handwritten Signature]*  
SIGNATURE  
7-18-18  
DATE



INDEX NO. C-1  
3605012000