

CERTIFIED LAND CORNER RESTORATION

Index No. K-1

State of Wisconsin

County of Oneida } ss.

History of original corner establishment:
No evidence of any previous corner.
Town road running west from N 1/16 position.

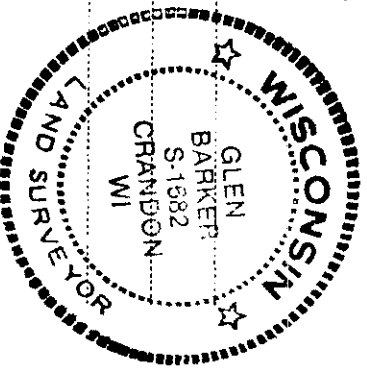
I Glen Barker, do hereby certify that on the 17th day of January, 1984, I have

restored the corner of the Sections 13 & 18 Township 36 North, Range 5 & 6 East, Fourth Principal Meridian,

as described hereon; and that from this evidence I established a new monument and accessories as described hereon to perpetuate the original location of this corner.

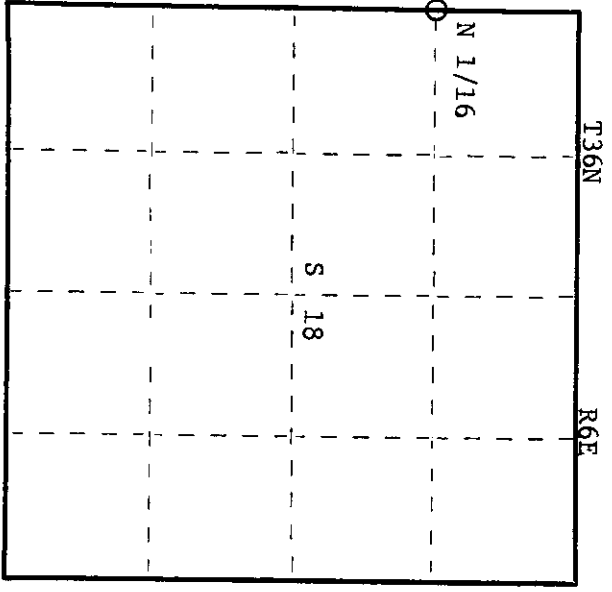
Resident witnesses:

J. Claflin - RLS
H. Wagoner



Description of corner evidence found:
Total distance from section corner 12-31/7-8 T36N R5&6E to 1/4 corner between sections 13 & 18 is 2638.94'.
Set N 1/16 1319.47' intermediate.

Description of monument and accessories I established to perpetuate the original location of this corner.
Set a 1" x 18" iron pipe 3.0' west of center line of C.T.H. "Y" for true corner 6" below road bed.
Set a 1" iron pipe with 2" diameter alloy cap 36.0 east of true corner for reference corner. Cap stamped: S1682
Marked NBT to true corner
Jack pine 8" 548E 41.98' T36N R6E
B.O. - Street sign 2" I.P. 545W 41.98' 13 18 R.C.
W. 36 Ft.
CPI - 1984



○ = Corner monument restored.

Dated at Rhinelander, Wis., this 20th day of February, 1984

Signature: *Glen Barker* Title: Registered Land Surveyor Registration No. S1682
(County Surveyor, Registered Land Surveyor, or other duly authorized official)

Office of Register of Deeds, County of Oneida
Instrument was filed in this office for record on the 23rd day of May, 1984
at 1:00 o'clock P.M.

Doris Virginia Kuehn
(Register of Deeds)

By: Deputy

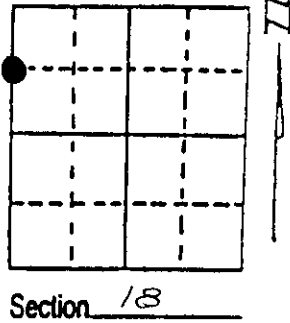
3605133000

U.S. PUBLIC LAND SURVEY MONUMENT RECORD

Note: This form is intended and designed to fulfill all requirements of Wisconsin Administrative Code, Chapter A-E 7.08 U.S. Public Land Survey Monument Record (3) (a) (b) (c) (d) (e) (f) (g) (h) (i). An additional sheet may be added if necessary to conform with said requirements.

(a) Corner location: Township 36 North
 Range 6 East/West

COR ID
 43605133000



Town/City/Village NOKOMIS
 County ONEIDA

(b) (f) (g) (h) Description of monument found at this corner and if it was accepted, state all evidence (material, testimonial, occupational, plats, records, other monuments) used as a basis for accepting. If not accepted or if nothing was found, state evidence used as basis for establishing location. If reestablished through lost corner proportionate methods, indicate all monuments, distances and directions used to establish. Indicate type of monument found or set and sign post.

FOUND PK NAIL,

NAIL IN 8" J. PINE S48°E, 41.98 FT.

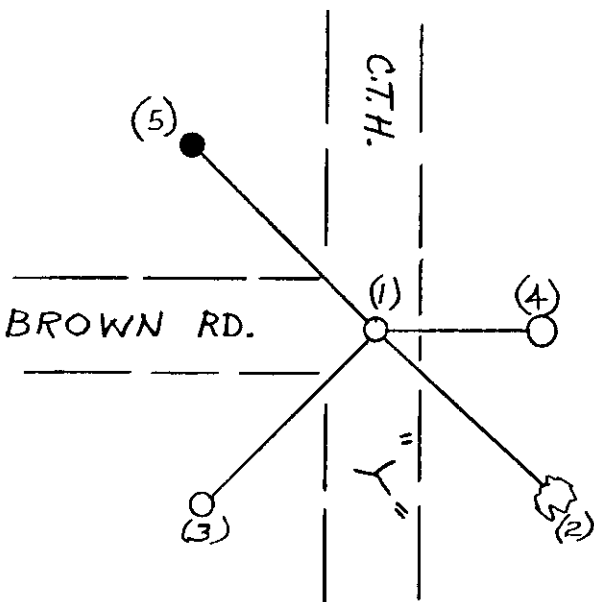
STREET SIGN 2" I.P. S45°W, 41.98 FT.

1" DIA. IRON PIPE WITH 2" DIA. ALLOY TABLET EAST 36.12 FT., STAMPED

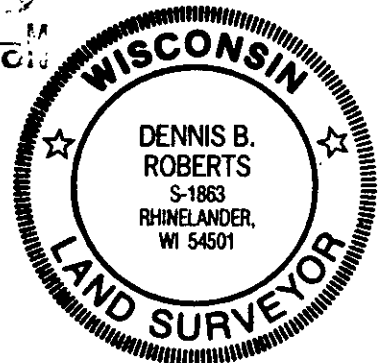
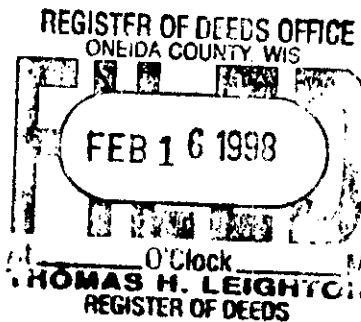
This corner was referenced out in advance of road construction as an act of preserving survey evidence. This corner has not been tested for its accuracy during the course of this preservation and it is recommended that the corner be evaluated for its validity by those using it.



(c) (d) (e) Plan view of corner with ties to at least 4 witness monuments. If in disagreement with previously established corner, show the distances between the two corners and also indicate the ties to the disputed corner.



- (1) REPLACED PK WITH RAILROAD SPIKE
- (2) NAIL IN 8" J. PINE S48°E, 41.98 FT.
- (3) STREET SIGN 2" I.P. S45°W, 41.98 FT.
- (4) 1" DIA. IRON PIPE WITH 2" DIA. ALLOY TABLET EAST, 36.12 FT.
- (5) 3/4" DIA. IRON ROD, SET N45°W, 50.00 FT.



(i) I, DENNIS B. ROBERTS

(type or print name) certify that the corner location on this record was determined by me or under my direction and control and that this U.S. Public Land Survey Monument Record is correct and complete to the best of my knowledge and belief.

Dennis B. Roberts
 Signature

Date

3605133000

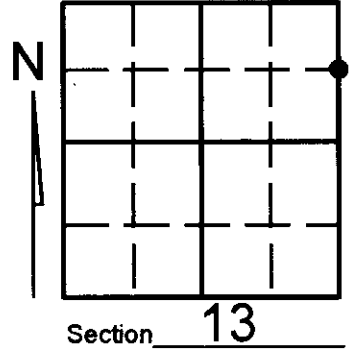
Stamp

Index No. K-1

U.S. PUBLIC LAND SURVEY MONUMENT RECORD

Note: This form is intended and designed to fulfill all requirements of Wisconsin Administrative Code, Chapter A-E 7.08 U.S. Public Land Survey Monument Record (3)(a)(b)(c)(d)(e)(f)(g)(h)(i). An additional sheet may be added if necessary to conform with said requirements.

(a) Corner location: Township 36 North
 Range 05 (East) West
 Town/City/Village LITTLE RICE
 County ONEIDA

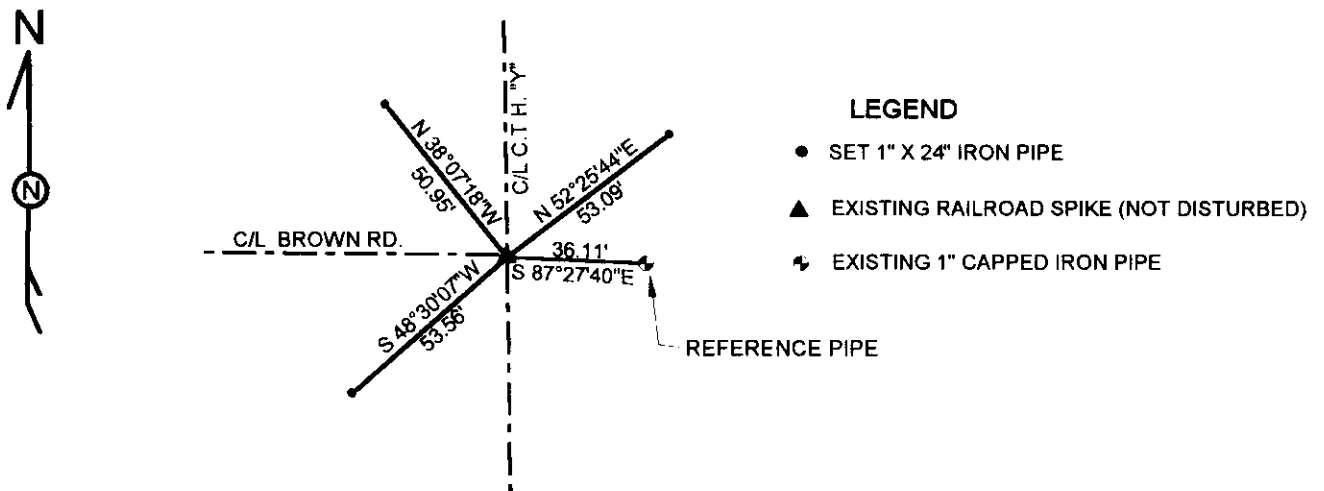


b) (f) (g) (h) Description of monument found at this corner and if it was accepted, state all evidence (material, testimonial, occupational, plats, records, other monuments) used as a basis for accepting. If not accepted or if nothing was found, state evidence used as basis for establishing location. If reestablished through lost corner proportionate methods, indicate all monuments, distances and directions used to establish. Indicate type of monument found or set and sign post.

NOTE: This corner was referenced out in advance of road construction as an act of preserving survey evidence. This corner has not been tested for its accuracy during the course of this preservation and it is recommended that the corner be evaluated for its validity by those using it.

-Found railroad spike as shown on county survey file number B3025 and corner restoration sheet number K-1 (corner ID 43605133000). Referenced out the monument before road construction and went back and checked references and referenced the monument as shown below.

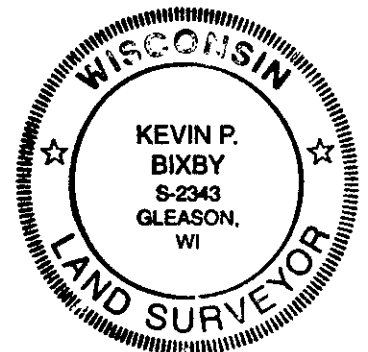
c) (d) (e) Plan view of corner with ties to at least 4 witness monuments. If in disagreement with previously established corner, show the distances between the two corners and also indicate the ties to the disputed corner.



(i) I, KEVIN P. BIXBY

(type or print name) certify that the corner location on this record was determined by me or under my direction and control and that this U.S. Public Land Survey Monument Record is correct and complete to the best of my knowledge and belief.

Kevin P. Bixby
 Signature Date 02/13/01



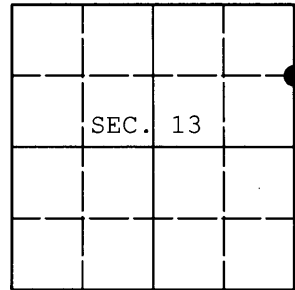
3605 13 3000
 Stamp

Index No. K 25

U.S. PUBLIC LAND SURVEY MONUMENT RECORD

Note: This form is intended and designed to fulfill all requirements of Wisconsin Administrative Code, Chapter A-E 7.08 U.S. Public Land Survey Monument Record (3) (a) (b) (c) (d) (e) (f) (g) (h) (i). An additional sheet may be added if necessary to conform with said requirements.

(a) CORNER LOCATION: WISCORS - Oneida County
 N 1/16 Cor. of Secs. 13 & 18 N: 154,637.06 USft
 Township 36 North E: 165,617.24 USft
 Range 5 & 6 East of the 4th P.M. Datum: NAD 1983(2011)
 Town of Little Rice & Nokomis County of Oneida



(b) HISTORY OF ORIGINAL CORNER ESTABLISHMENT

Original Surveyor: _____ Original Accessories: _____
 Date of Survey: _____ Commenced: _____
 Completed: _____

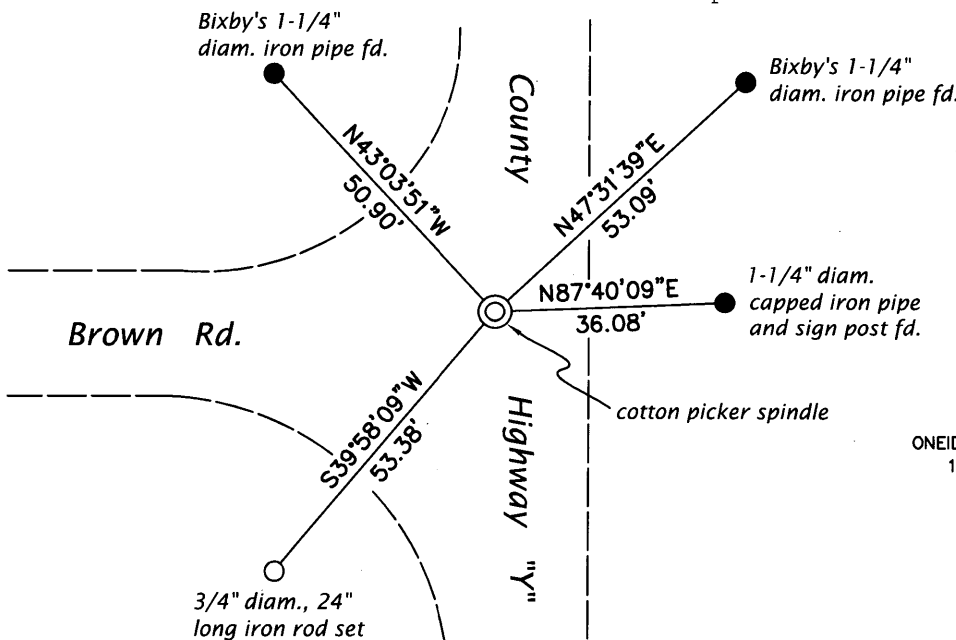
(b) (f) (g) (h) Description of monument found at this corner and if it was accepted, state all evidence (material, testimonial, occupational, plats, records, other monuments) used as a basis for accepting. If not accepted or if nothing was found, state evidence used as basis for establishing location. If re-established through lost corner proportionate methods, indicate all monuments, distances and directions used to establish. Indicate type of monument and sign post found or set.

This is a perpetuation of a previous USPLS Monument Record by Kevin P. Bixby, RLS dated February 13, 2001 and filed in the office of the Oneida County Register of Deeds. A complete history of the corner can be found on the previous monument record. I accept the previous location as a true and faithful perpetuation or reestablishment of the original corner location and further perpetuate it as follows.

June 19, 2013: Prior to road construction, I found and accepted the record monument, a railroad spike in the intersection of County Highway Y and Brown Road. I performed a GPS observation referenced to the WISCORS GNSS Network. I found or established accessories as shown below.

August 1, 2015: Following road construction, I returned and set a cotton picker spindle at the corner point from the reference monuments established previously. I performed a second GPS observation referenced to the WISCORS GNSS Network. The coordinates shown are the mean of the two observations that differed by 0.08 ft.

(c) (d) (e) Plan view of corner with ties to at least 4 witness monuments. If in disagreement with previously established corner, show the distances between the two corners and also indicate the ties to the disputed.



(i) I, Jeffrey W. Austin, Professional Land Surveyor No. S-1885, hereby certify that the corner location on this record was determined by me or under my direction and control and that this U.S. Public Land Survey Monument Record is correct and complete to the best of my knowledge and belief.

AT _____ O'CLOCK _____ M
 KYLE J. FRANSON
 REGISTER OF DEEDS

Signature _____

Date _____

JAN. 14, 2016