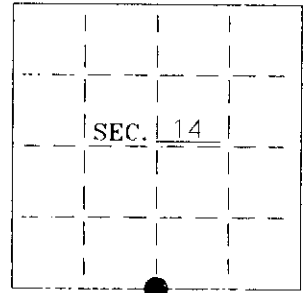


U. S. PUBLIC LAND SURVEY MONUMENT RECORD

Note: This form is intended and designed to fulfill all requirements of Wisconsin Administrative Code-Chapter A-E 7.08 U. S. Public Land Survey Monument Record (3)(a)(b)(c)(d)(e)(f)(g)(h)(i). An additional sheet may be added if necessary to conform with said requirements.

(a) CORNER LOCATION: State Plane Coordinates
 S 1/4 corner of Sec. 14 X _____
 Township 36 North Y _____
 Range 5 East Datum Base _____
 Town Little Rice County of Oneida



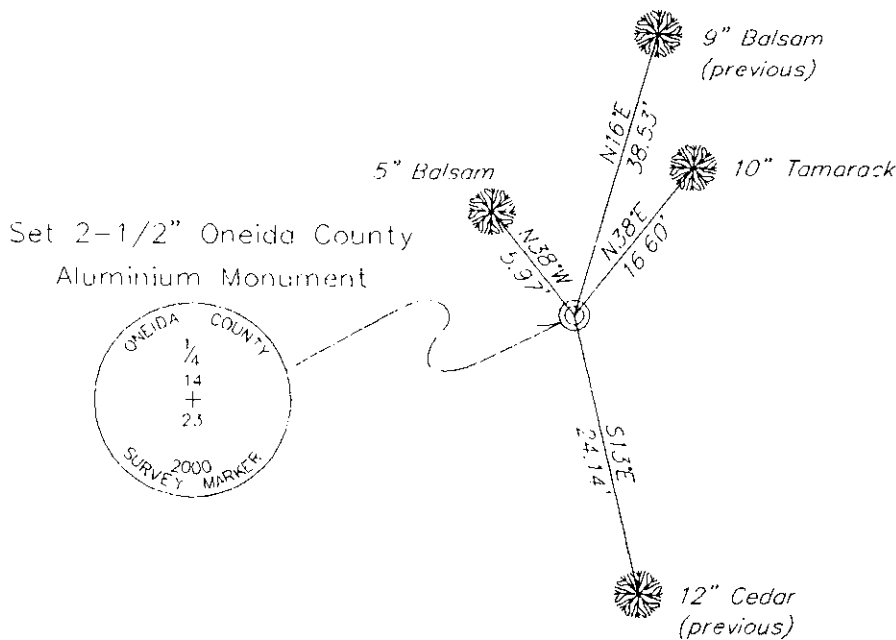
(b) HISTORY OF ORIGINAL CORNER ESTABLISHMENT:
 Original Surveyor: J. Jenkins
 Date of Survey: Commenced 1863
 Completed 1863

Original B.T.'S
 Hemlock 8" N27°W, 17 lks
 Birch 8" S27°W, 42 lks

(b)(f)(g)(h) Description of monument found at this corner and if it was accepted—state all evidence (material—testimonial—occupation—plats—records—other monuments) used as a basis for accepting. If not accepted or if nothing was found state evidence used as basis for establishing location. If reestablished through lost corner proportionate methods indicate all monuments—distances and directions used to establish. Indicate type of monument and sign post found or set.

- 1935— A.L. Lytle set 1/4 post by single proportion between section corners at 42.32 chains. BT's: Spruce 7", S35°W, 10-1/2 lks, White Pine 10" N87°W, 17 lks.
- 1979— Lester Schmit shows a 1" iron pipe found on a map dated July 6, 1979 (See Oneida County Surveyor's Map #C-1242)
- 1983— On a map drawn 3/09/87, W.H. Sluth(O-I) shows a corner "by others."
- 1987— Inman, Foltz and Associates' field notes indicate they replaced a badly rusted 1-3/4" iron pipe with a 1-1/2" iron pipe and made 4 new BT's: 10" Cedar S15°E, 24.20', 12" Cedar S62°W, 20.81', 10" Balsam N14°E, 38.38', 9" Balsam N78°E, 34.20'.
- 1991— William Badow shows an Oneida County Aluminium Monument set on CSM No. 1456.
- 2000— I did not find Badow's Oneida County Aluminium Monument. I found and accepted a 1-1/4" (nominal) iron pipe and replaced it with an Oneida County Aluminium Monument.

(c)(d)(e) Plan view of corner with ties to at least 4 witness monuments. If in disagreement with previously established corner—show the distances between the two corners and also indicate the ties to the disputed.



Set white carsonite post 11' North of 1/4 corner
 -Set or found PK nail in each BT.

(i) I Charles E. Winkler S-1431
 hereby certify that the corner location on this record was determined by me or under my direction and control and that this U.S. Public Land Survey Monument Record is correct and complete to the best of my knowledge and belief.

Charles E. Winkler 7/30/2001
 Signature Foltz and Associates, Inc. Date



INDEX NO. N 19

3605140020