

CERTIFIED LAND CORNER RESTORATION
U. S. PUBLIC LAND SURVEY MONUMENT RECORD

History of original corner establishment:
The original Government Survey was performed by Joseph H. Jenkins
Deputy Surveyor in June 1863

Wood Post Set

Black Pine	10"	N86°W	515 links
Black Pine	10"	S87°W	522 links

Description of corner evidence found:
PK in center of bridge

Northwest corner of Bridge	17.0 feet
Southwest corner of Bridge	16.7 feet
Northeast corner of Bridge	25.3 feet
Southeast corner of Bridge	25.1 feet

Description of monument and accessories I established to perpetuate the original location of this corner.

Corner in good condition and ties found the same

State of Wisconsin

County of Oneida } ss.

John H. Fisher

I, John H. Fisher, do hereby

certify that on the 23 day

of June, 1983, I found

evidence of the North one Quarter

corner of 36

Township 36, North, Range

5 East, Fourth Principal Meridian,

as described hereon; and that from this evidence

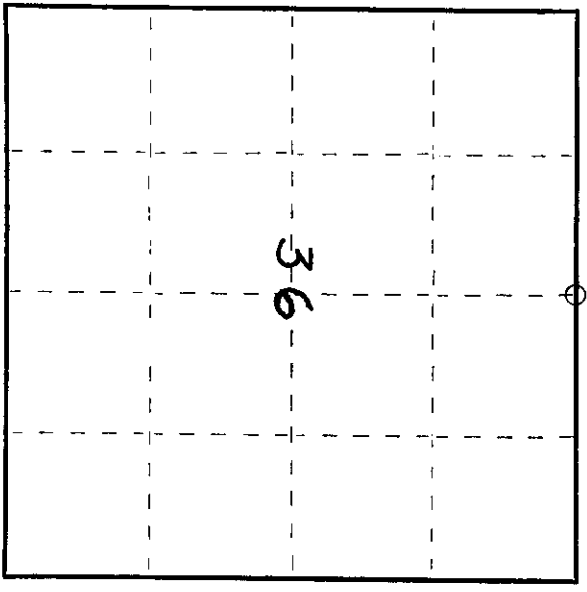
I established a new monument and accessories

as described hereon to perpetuate the original

location of this corner.

Resident witnesses:

None



O = Corner monument restored.

Dated at Minocqua, Wis., this 4th day of October, 1983.

Signature [Signature] Title Registered Land Surveyor Registration No. S-836
(County Surveyor, Registered Land Surveyor, or other duly authorized official)

Office of Register of Deeds, County of Oneida
instruments was filed in this office for record on the 18th day of January, 1984
at 10 o'clock A. M.

By [Signature] Deputy
(Register of Deeds)

By [Signature] Deputy
Oneida County Surveyor date 18 Jan '84

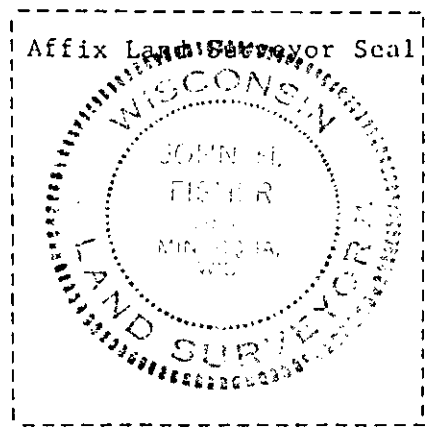
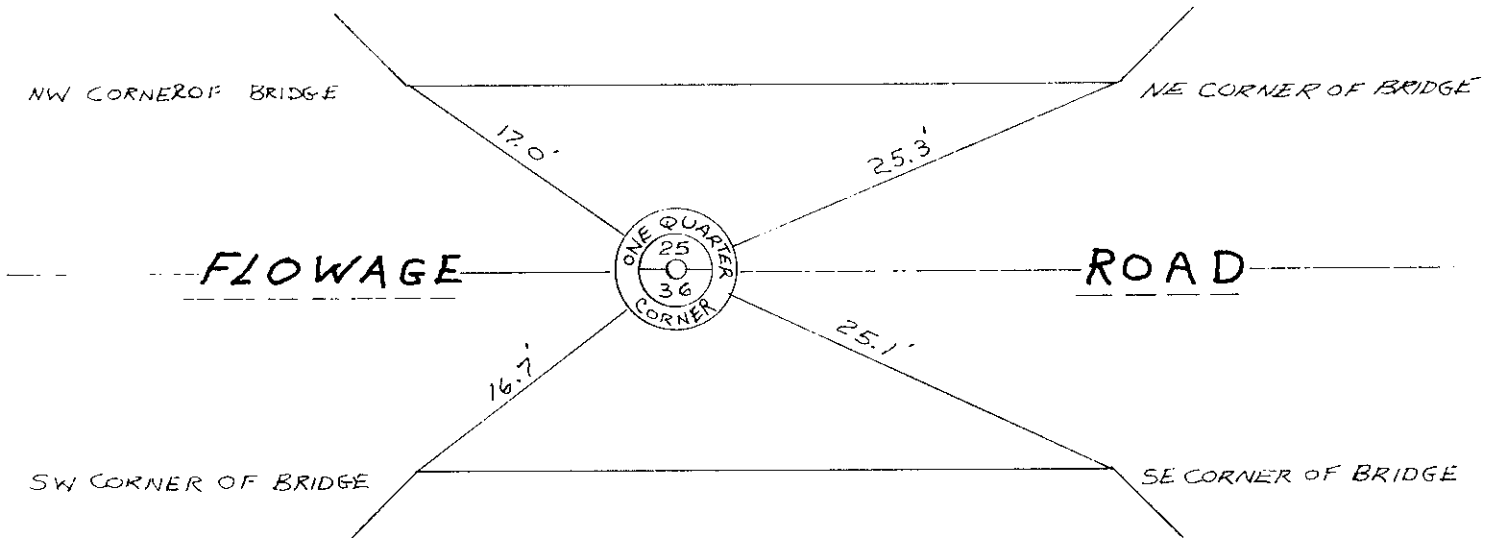
(e) Describe any material discrepancy between the location of the corner as restored or reestablished and the location of that corner as previously restored or reestablished by distance and direction. Show the discrepancy on the plan view drawing under (d), above. Show the distances between the corner as previously restored or reestablished and (1) the corner as restored or reestablished, and (2) to at least 2 of the witness monuments shown on the drawing in (d), above.

See Drawing Below

(f) Was the corner restored through acceptance of (1) an obliterated evidence location, or, (2) a found perpetuated location?

Found perpetuated location

(g&h) Was the corner reestablished through lost corner proportionate methods? If so, show the method, including the directions and distances to other public land survey corners used as evidence or used for proportioning in determining the corner location?



(i) I, John H. Fisher
 (type or print name) certify that the corner location shown on this record was determined by me or under my direction and control and that this U.S. Public Land Survey Monument Record is correct and complete to the best of my knowledge and belief.

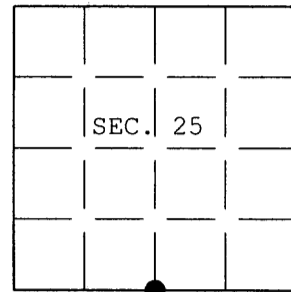
John H. Fisher 10/4/83
 Signature Date

REGISTRAR'S OFFICE)
 Oneida County, Wis.)
 Received for Record the 18th day of
January A.D. 1984 at
10 o'clock A M. and recorded in
 Vol. _____ on page _____
Loris Verage Kuehn
 Registrar

U.S. PUBLIC LAND SURVEY MONUMENT RECORD

Note: This form is intended and designed to fulfill all requirements of Wisconsin Administrative Code, Chapter A-E 7.08 U.S. Public Land Survey Monument Record (3) (a) (b) (c) (d) (e) (f) (g) (h) (i). An additional sheet may be added if necessary to conform with said requirements.

(a) CORNER LOCATION: Plane Coordinates
 1/4 Cor. of Secs. 25 & 36 X:
 Township 36 North Y:
 Range 5 East of the 4th P.M. Datum:
 Town of Little Rice County of Oneida



(b) HISTORY OF ORIGINAL CORNER ESTABLISHMENT

Original Surveyor: Jenkins, Joseph H. Original Accessories:
 Date of Survey: Commenced June, 1863 Blk. Pine 10" N.86°W., 515 lks.
 Completed June, 1863 Blk. Pine 10" S.87°W., 522 lks.

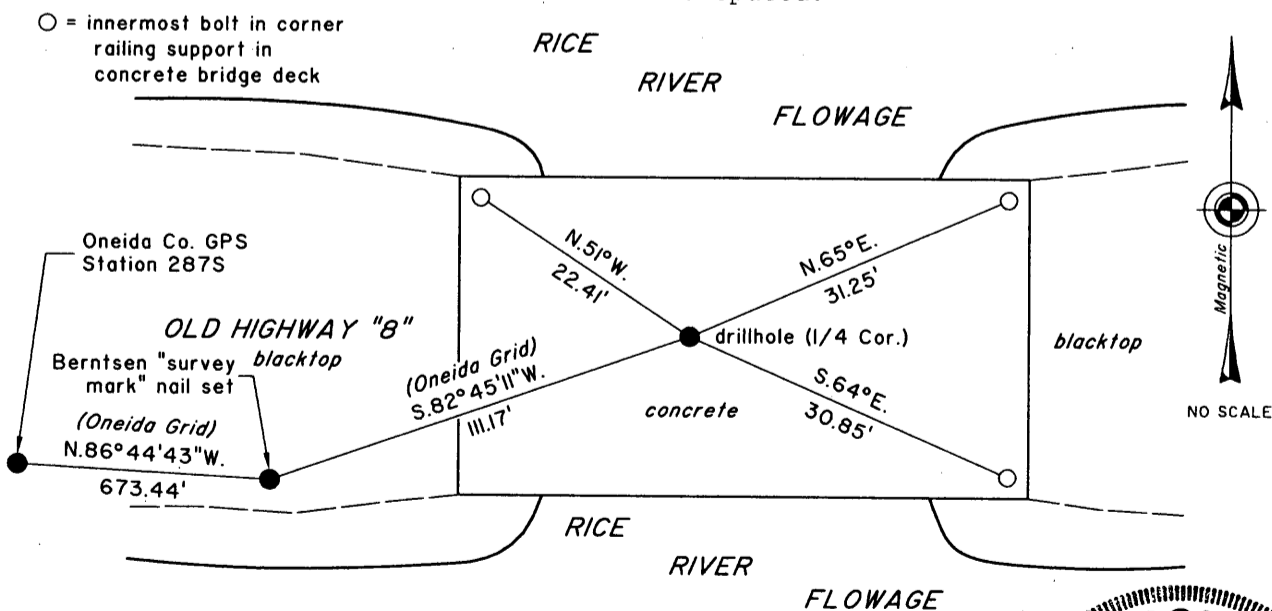
(b) (f) (g) (h) Description of monument found at this corner and if it was accepted, state all evidence (material, testimonial, occupational, plats, records, other monuments) used as a basis for accepting. If not accepted or if nothing was found, state evidence used as basis for establishing location. If re-established through lost corner proportionate methods, indicate all monuments, distances and directions used to establish. Indicate type of monument and sign post found or set.

4 Oct. 1983: USPLS Monument Record prepared by John H. Fisher and filed in the office of the Oneida County Register of Deeds. Found PK nail in bridge deck based on previously perpetuated location.

7 Jan. 2003: Prior to bridge replacement, I found Fisher's PK nail that checked his ties to the bridge corners. I set temporary ties to the PK nail to reset the corner point after bridge construction.

21 July 2004: I set a drillhole in the concrete deck of the new bridge from previous ties. I established new accessories as shown below and found it impractical to set a plastic sign post.

(c) (d) (e) Plan view of corner with ties to at least 4 witness monuments. If in disagreement with previously established corner, show the distances between the two corners and also indicate the ties to the disputed.



(i) I, Jeffrey W. Austin, Registered Land Surveyor No. S-1885, hereby certify upon honor that the corner location on this record was determined by me or under my direction and control and that this U.S. Public Land Survey Monument Record is correct and complete to the best of my knowledge and belief.

Signature

Date

11 FEB 2005



INDEX NO. V-23

3605 25 00 20