

CERTIFIED LAND CORNER RESTORATION

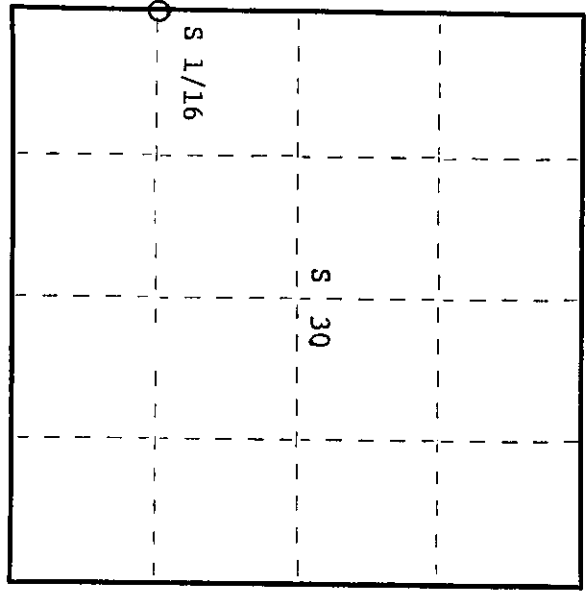
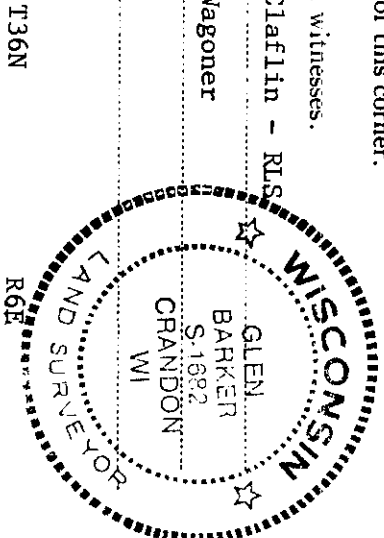
Index No. 0-1

State of Wisconsin } ss.
County of Oneida

History of original corner establishment:
A.M. Hess established corner in 1977.

I, Glen Barker, do hereby
certify that on the 14th day
of December, 1983, I found Estab.
~~corner of~~ the S. 1/16
corner of Sections 25 & 30
Township 36, North, Range
5 & 6 East, Fourth Principal Meridian,
as described hereon; and that from this evidence
I established a new monument and accessories
as described hereon to perpetuate the original
location of this corner.

Resident witnesses:
J. Claflin - RLS
H. Wagoner



O = Corner monument restored.

Description of corner evidence found:
Total distance from section corner 25-36/30-31 T36N R5&6E to 1/4 corner between
Sections 25 & 30 is 2636.00'. Set S 1/16 1318.00' intermediate.
Recorded same distance as A.M. Hess did in 1977.
Recovered 2" iron pipe due west 32.88' of our position.

Description of monument and accessories I established to perpetuate the original location of this corner.
Set a railroad spike 2.0' west of center line of C.T.H. "Y" for true corner.
Set a 1" iron pipe with 2" diameter alloy cap 45.20' east of true corner for
reference corner - Cap stamped:
T36N
R5E R6E
S 1/16 25 30 REF Cor.
W. 45.2 ft.
S1682 - 1983

Marked NBTs to true corner:
Jack pine 3" N54E 48.37'
B.O. - 2" iron pipe due west 32.88'

Dated at Rhinelander, Wis., this 13th day of February, 1984
Signature: *Glen Barker* Title: Registered Land Surveyor Registration No. S1682
(County Surveyor, Registered Land Surveyor, or other duly authorized official)
Office of Register of Deeds, County of Oneida
Instrument was filed in this office for record on the 23rd day of May, 1984
at 1:00 o'clock P.M.
Lorice Berge Kuehn
(Register of Deeds)

By: Deputy

3605251000

U.S. PUBLIC LAND SURVEY MONUMENT RECORD

Note: This form is intended and designed to fulfill all requirements of Wisconsin Administrative Code, Chapter A-E 7.08 U.S. Public Land Survey Monument Record (3) (a) (b) (c) (d) (e) (f) (g) (h) (i). An additional sheet may be added if necessary to conform with said requirements.

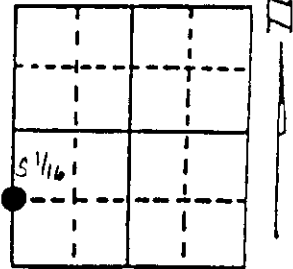
(a) Corner location: Township 36 North

Range 6 East/West

Town/City/Village NOKOMIS

County ONEIDA

COR ID
43605251000



Section 30

(b) (f) (g) (h) Description of monument found at this corner and if it was accepted, state all evidence (material, testimonial, occupational, plats, records, other monuments) used as a basis for accepting. If not accepted or if nothing was found, state evidence used as basis for establishing location. If reestablished through lost corner proportionate methods, indicate all monuments, distances and directions used to establish. Indicate type of monument found or set and sign post.

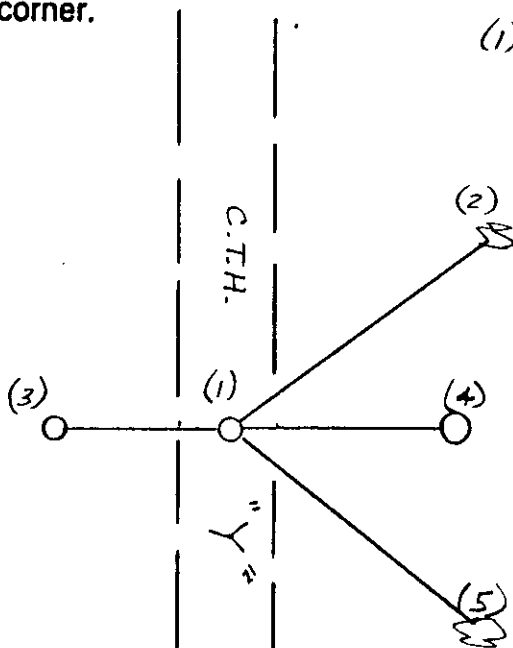
P.K. FOUND

- BT. NAIL IN 5" J. PINE N 54° E, 48.37 FT.
- 2" DIA. IRON PIPE WEST, 32.88 FT.
- 1" DIA. IRON PIPE 2" DIA. ALLOY TABLET EAST, 45.20 FT., STAMPED

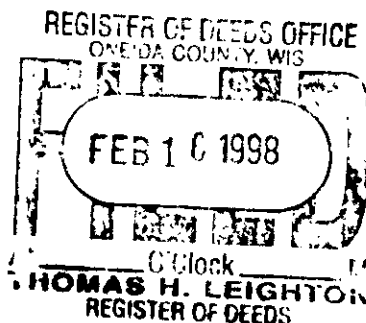


This corner was referenced out in advance of road construction as an act of preserving survey evidence. This corner has not been tested for its accuracy during the course of this preservation and it is recommended that the corner be evaluated for its validity by those using it.

(c) (d) (e) Plan view of corner with ties to at least 4 witness monuments. If in disagreement with previously established corner, show the distances between the two corners and also indicate the ties to the disputed corner.



- (1) REPLACED PK, WITH RAILROAD SPIKE
- (2) NAIL IN 5" J. PINE N 54° E, 48.37 FT
- (3) 2" DIA. IRON PIPE WEST, 32.88 FT
- (4) REF. MON. 1" DIA. IRON PIPE 2" DIA. ALLOY TABLET EAST, 45.20 FT.
- (5) SET NAIL IN 6" J. PINE S 52° E, 60.65 FT.



(i) I, DENNIS B. ROBERTS
(type or print name) certify that the corner location on this record was determined by me or under my direction and control and that this U.S. Public Land Survey Monument Record is correct and complete to the best of my knowledge and belief.

Dennis B. Roberts 12-03-97
Signature Date

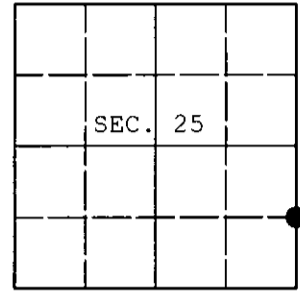


Index No. U 7

U.S. PUBLIC LAND SURVEY MONUMENT RECORD

Note: This form is intended and designed to fulfill all requirements of Wisconsin Administrative Code, Chapter A-E 7.08 U.S. Public Land Survey Monument Record (3) (a) (b) (c) (d) (e) (f) (g) (h) (i). An additional sheet may be added if necessary to conform with said requirements.

(a) CORNER LOCATION: WISCORS - Oneida County
 S 1/16 Cor. of Secs. 25 & 30 N: 141,435.09 USft
 Township 36 North E: 165,592.67 USft
 Range 5 & 6 East of the 4th P.M. Datum: NAD 1983(2011)
 Town of Little Rice & Nokomis County of Oneida



(b) HISTORY OF ORIGINAL CORNER ESTABLISHMENT

Original Surveyor: Original Accessories:
 Date of Survey: Commenced:
 Completed:

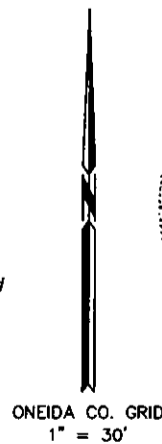
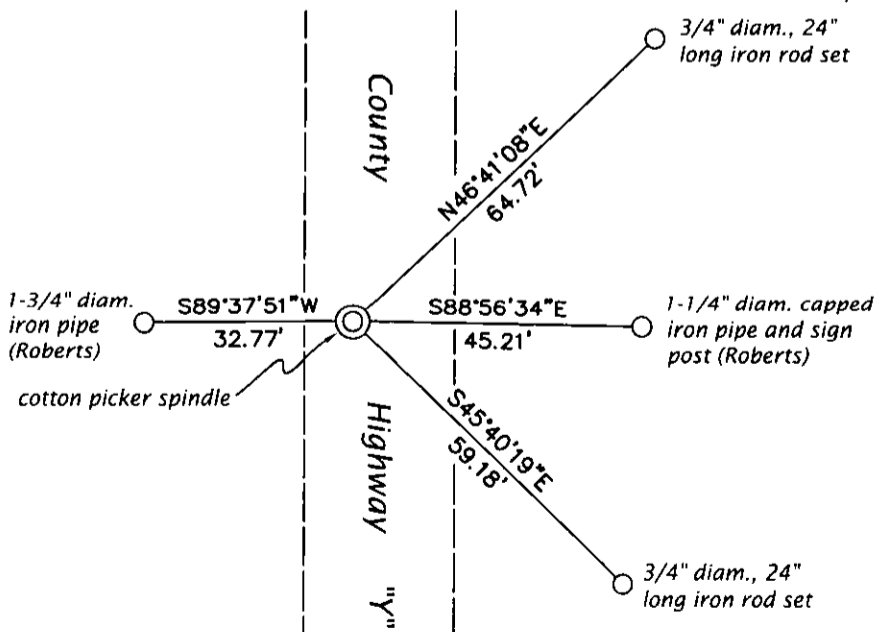
(b) (f) (g) (h) Description of monument found at this corner and if it was accepted, state all evidence (material, testimonial, occupational, plats, records, other monuments) used as a basis for accepting. If not accepted or if nothing was found, state evidence used as basis for establishing location. If re-established through lost corner proportionate methods, indicate all monuments, distances and directions used to establish. Indicate type of monument and sign post found or set.

This is a perpetuation of a previous USPLS Monument Record by Dennis B. Roberts, RLS dated December 3, 1997 and filed in the office of the Oneida County Register of Deeds. A complete history of the corner can be found on the previous monument record. I accept the previous location as a true and faithful perpetuation or reestablishment of the original corner location and further perpetuate it as follows.

June 27, 2013: Prior to road construction, I found and accepted the record monument, a railroad spike 4 ft. West of the centerline of County Highway Y. I performed a GPS observation referenced to the WISCORS GNSS Network. I found or established accessories as shown below.

August 2, 2015: Following road construction, I returned and set a cotton picker spindle at the corner point from the reference monuments established previously. I performed a second GPS observation referenced to the WISCORS GNSS Network. The coordinates shown are the mean of the two observations that differed by 0.12 ft.

(c) (d) (e) Plan view of corner with ties to at least 4 witness monuments. If in disagreement with previously established corner, show the distances between the two corners and also indicate the ties to the disputed.



REGISTER OF DEEDS OFFICE
 ONEIDA COUNTY
 FILED

OCT 15 2015

AT _____ O'CLOCK _____ M
 KYLE J. FRANSON
 REGISTER OF DEEDS

(i) I, Jeffrey W. Austin, Professional Land Surveyor No. S-1885, hereby certify that the corner location on this record was determined by me or under my direction and control and that this U.S. Public Land Survey Monument Record is correct and complete to the best of my knowledge and belief.

Signature

Date

OCT. 11, 2015

3605251000 (INDEX NO. U-25)