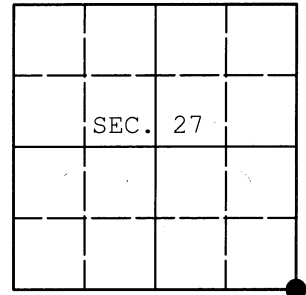


**U.S. PUBLIC LAND SURVEY MONUMENT RECORD**

Note: This form is intended and designed to fulfill all requirements of Wisconsin Administrative Code, Chapter A-E 7.08 U.S. Public Land Survey Monument Record (3) (a) (b) (c) (d) (e) (f) (g) (h) (i). An additional sheet may be added if necessary to conform with said requirements.

(a) CORNER LOCATION: WISCORS - Oneida County  
 Cor. of Secs. 26, 27, 34 & 35 N: 140,067.45 USft  
 Township 36 North E: 154,958.61 USft  
 Range 5 East of the 4th P.M. Datum: NAD 1983(2011)  
 Town of Little Rice County of Oneida



(b) HISTORY OF ORIGINAL CORNER ESTABLISHMENT

Original Surveyor: Joseph Jenkins Original Accessories:  
 Date of Survey: Commenced: June 1, 1863 Tamarack 5" N44°W, 8 lks.  
 Completed: June 10, 1863 Tamarack 5" N43°E, 13 lks.

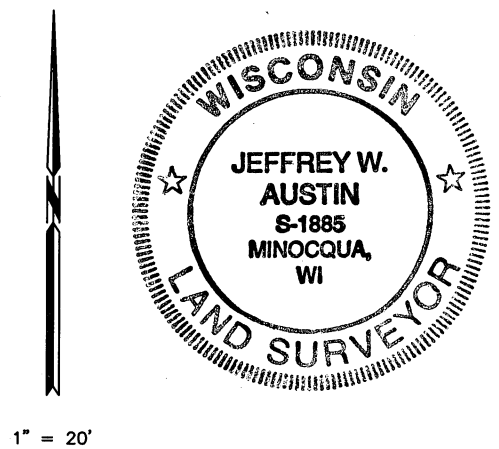
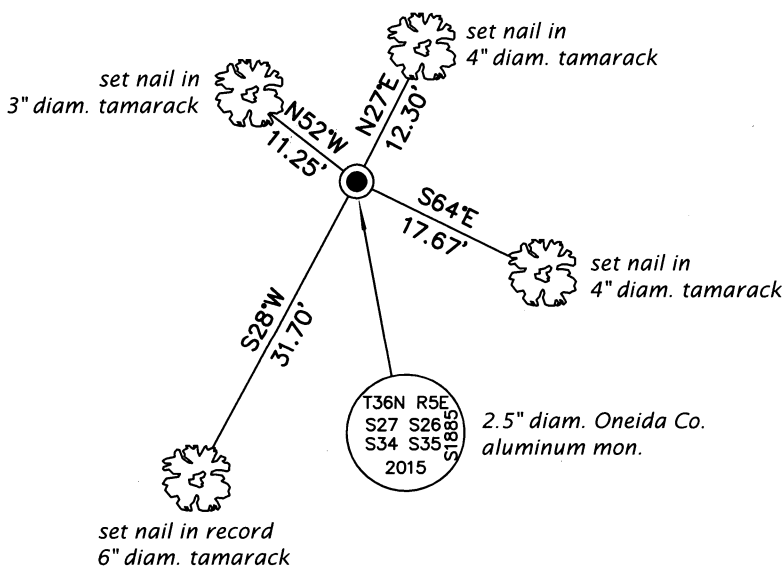
(b) (f) (g) (h) Description of monument found at this corner and if it was accepted, state all evidence (material, testimonial, occupational, plats, records, other monuments) used as a basis for accepting. If not accepted or if nothing was found, state evidence used as basis for establishing location. If re-established through lost corner proportionate methods, indicate all monuments, distances and directions used to establish. Indicate type of monument and sign post found or set.

September 29, 194?: Wincentsen Book 1 on Page 22. 5" x 5" post: Tam. 5 S25°W, 31.7'; Tam. 4 N47°W, 7.0'; Tam. 5 N54°E, 35.0'

April 2, 2015: I found and accepted a 2" diam., 72" long thinwall pipe that appears to be a perpetuation of Wincentsen's post. In its place, I set a 2.5" diam., 60" long aluminum pipe with a 3.25" diam. Oneida Co. aluminum cap flush with the ground surface. I found or established accessories as shown below and set a white plastic sign post bearing West, 1.3 ft. dist.

The coordinates shown were derived from a direct RTN GPS observation referenced to the WISCORS network.

(c) (d) (e) Plan view of corner with ties to at least 4 witness monuments. If in disagreement with previously established corner, show the distances between the two corners and also indicate the ties to the disputed.



REGISTER OF DEEDS OFFICE  
 ONEIDA COUNTY  
 FILED

AUG 13 2015

AT \_\_\_\_\_ O'CLOCK \_\_\_\_\_ M  
 KYLE J. FRANSON  
 REGISTER OF DEEDS

(i) I, Jeffrey W. Austin, Professional Land Surveyor No. S-1885, hereby certify that the corner location on this record was determined by me or under my direction and control and that this U.S. Public Land Survey Monument Record is correct and complete to the best of my knowledge and belief.

Signature

JULY 24, 2015

Date

3605270000 (INDEX NO. V-17)