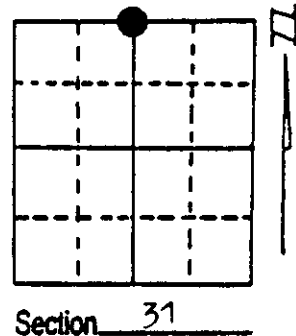


# U.S. PUBLIC LAND SURVEY MONUMENT RECORD

**Note:** This form is intended and designed to fulfill all requirements of Wisconsin Administrative Code, Chapter A-E 7.08 U.S. Public Land Survey Monument Record (3) (a) (b) (c) (d) (e) (f) (g) (h) (i). An additional sheet may be added if necessary to conform with said requirements.

(a) Corner location: Township 36 North  
 Range 5 East  
 Town of Little Rice  
 County of Oneida

REGISTER OF DEEDS OFFICE  
 ONEIDA COUNTY, WIS.  
**FILED**  
 MAY 10 1990  
 At \_\_\_\_\_ O'Clock \_\_\_\_\_ M  
**THOMAS H. LEIGHTON**  
 REGISTER OF DEEDS

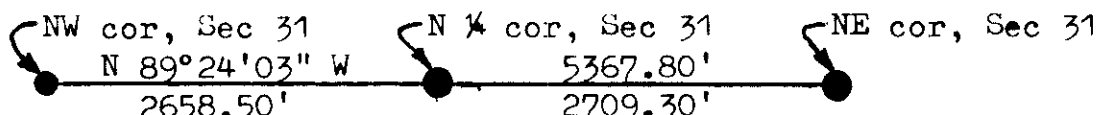


(b) (f) (g) (h) Description of monument found at this corner and if it was accepted, state all evidence (material, testimonial, occupational, plats, records, other monuments) used as a basis for accepting. If not accepted or if nothing was found, state evidence used as basis for establishing location. If reestablished through lost corner proportionate methods, indicate all monuments, distances and directions used to establish. Indicate type of monument found or set and sign post.

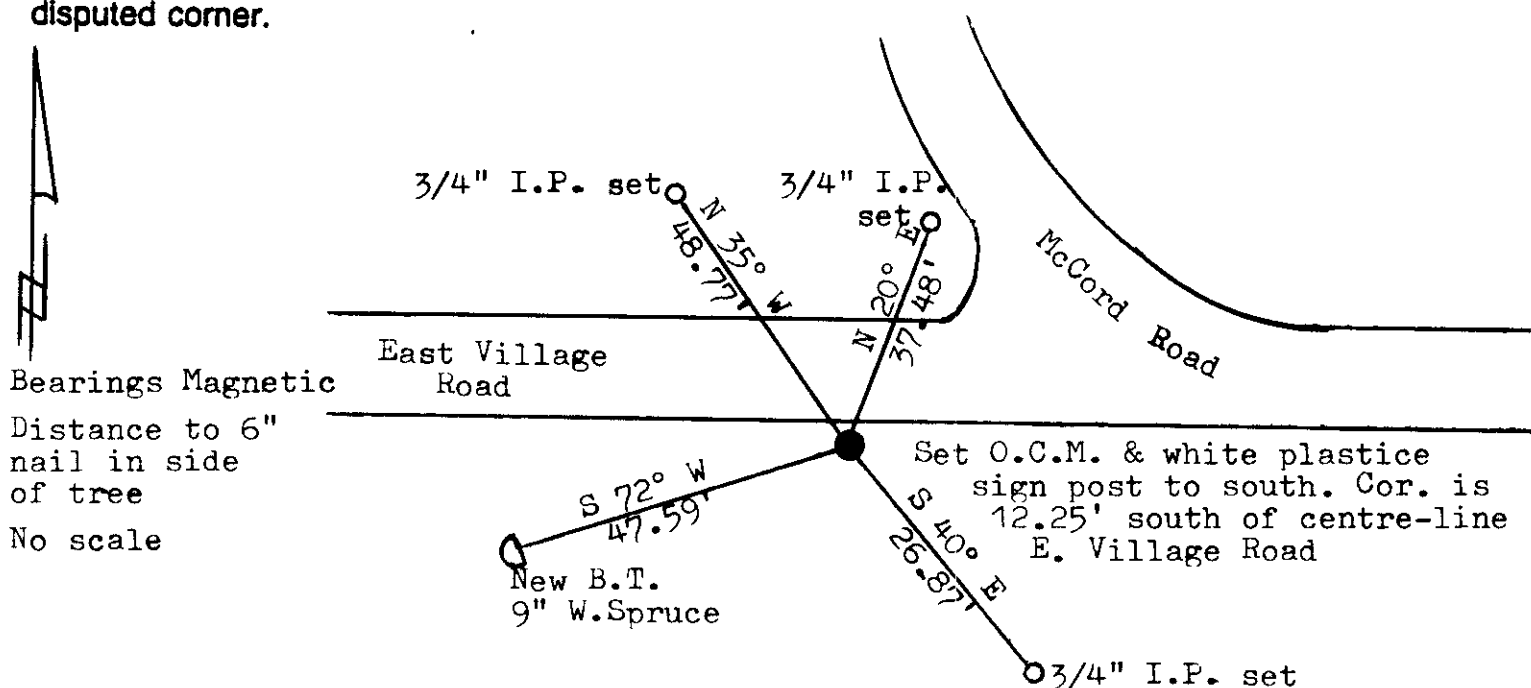
June 1863, Orig. cor. estab. by Joseph H Jenkins East correct between 30 & 31...  
 39.25 set 1/4 sec post to Sections 30 & 31, B.T.s Hemlock 14 S 36 E 3 & W. Pine  
 24 N 47 E 11

April 1990, I found no evidence of the location of this corner, so determined it lost. The stream calls per Orig. Survey did not fit at all with the existing water courses, so I established the location for the corner by single proportion measurement between the 2 Section Corners which fit quite well with the Town Roads to the east, west and north. I set a 2" x 30" Oneida County Capped Monument for the corner and witnessed it as shown below.

Single proportion  
 to set corner:



(c) (d) (e) Plan view of corner with ties to at least 4 witness monuments. If in disagreement with previously established corner, show the distances between the two corners and also indicate the ties to the disputed corner.



Bearings Magnetic  
 Distance to 6"  
 nail in side  
 of tree  
 No scale

(i) I, Lester J. Schmit R.L.S. 1192  
 (type or print name) certify that the corner location on this record was determined by me or under my direction and control and that this U.S. Public Land Survey Monument Record is correct and complete to the best of my knowledge and belief.

Lester J. Schmit Signature      3 May 1990 Date



Index No. V - 3

3605300020