

# U.S. PUBLIC LAND SURVEY MONUMENT RECORD

Note: This form is intended and designed to fulfill all requirements of Wisconsin Administrative Code A-E 7.08 3) (a-i).

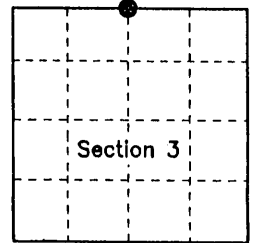
**(a) CORNER LOCATION**

Corner: North 1/4 Corner  
 Section: 3  
 Township: T 35 N  
 Range: R 05 E  
 Town: Wilson Township  
 County: Lincoln

**REGISTER OF DEEDS OFFICE**  
 ONEIDA COUNTY, WIS.  
 COUNTY GRID COORDINATES

**MAY 15 2006**

At **O'Clock** M  
 REGISTER OF DEEDS



**(b) HISTORY OF ORIGINAL CORNER ESTABLISHMENT**

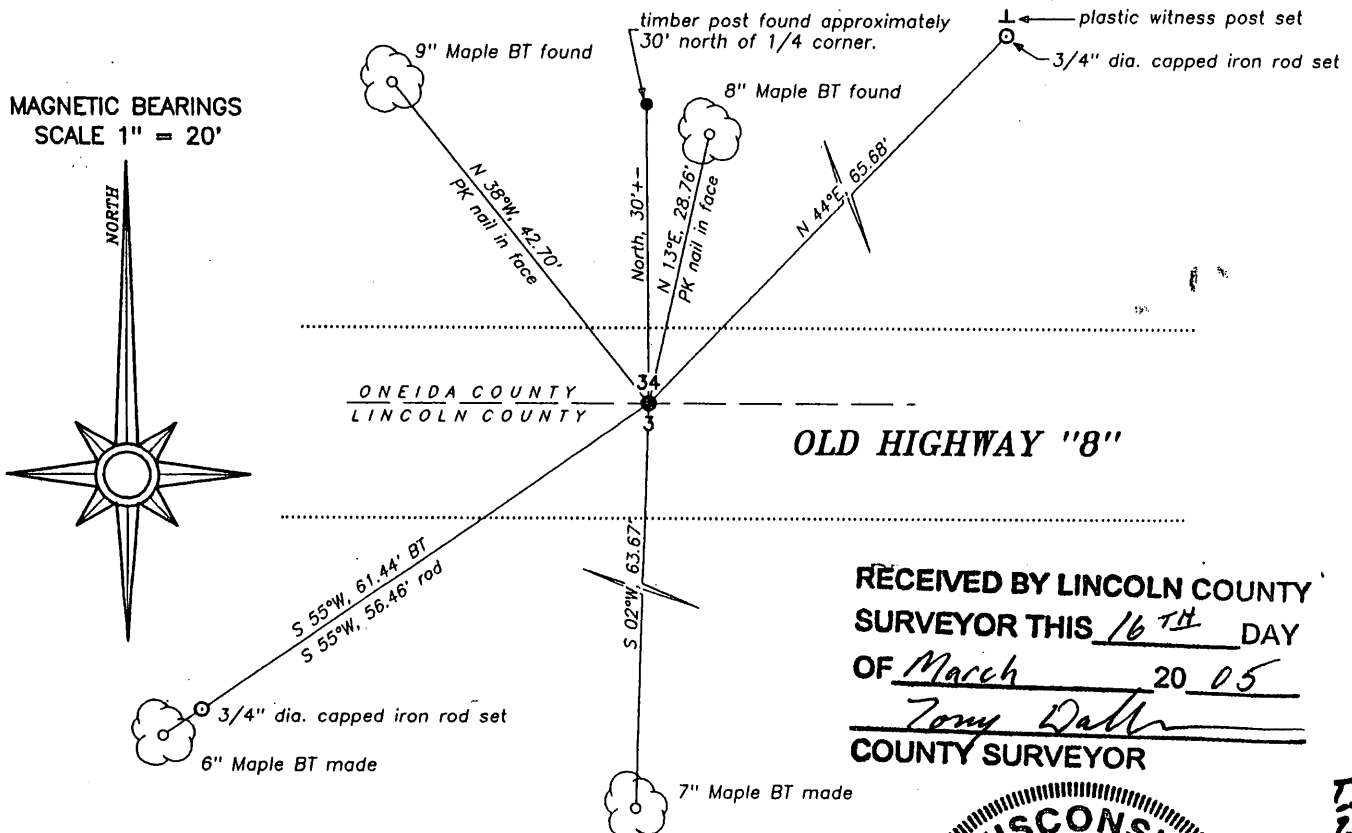
Original Surveyor: Alfred Millard  
 Date of Survey: Commenced August, 1860  
 Completed September, 1860

Original Bearing Trees: 8" W.Pine, N 45°E, 18lks  
 10" Fur, S 10°E, 10lks

**(f)(g)(h) Description of monument found at this corner and if it was accepted, state all evidence (material, testimonial, occupational, plats, records, other monuments) used as a basis for establishing location. If reestablished through last corner proportionate methods, indicate all monuments, distances and directions used to establish. Indicate type of monument and sign post found or set.**

November 16, 2004 – David A. Konopacky, R.L.S. 2566, during the course of the subdivision of Section 3, recovered the bottom portion of a Berntsen monument 3' north of the centerline of Old Highway "8", approx. 12" below the road grade. I set a 30" long Berntsen monument with a 4" diameter cap, stamped to identify its location, in place of the broken monument. I found no history or notes of when this corner location was established with the Berntsen monument. I found a timber post on the north side of Old Highway "8" and two existing bearing trees. I made two new bearing trees and set two 3/4" diameter iron rods with aluminum cap as shown in the diagram below. Distances to bearing trees measured to a nail set in the side of tree unless distance is noted to PK nail found in face of blaze. I set a plastic witness post 0.5' north of the northeast iron rod witness shown hereon.

**(c)(d)(e) Plan view of corner with ties to at least 4 witnesses. If in disagreement with previously established corner, show the distance between the two corners and also indicate the tie to the disputed corner.**



RECEIVED BY LINCOLN COUNTY  
 SURVEYOR THIS 16<sup>TH</sup> DAY  
 OF March 20 05  
Zony Dalk  
 COUNTY SURVEYOR



INDEX NO. 215  
 COPY FROM  
 Lincoln City

(i) I, David A. Konopacky, Registered Land Surveyor No. 2566, hereby certify that the corner location on this record was referenced by me or under my direction and control and that this U.S. Public Land Survey Monument Record is correct and complete to the best of my knowledge and belief.

[Signature]  
 Signature

11-25-04  
 Date

3605340020