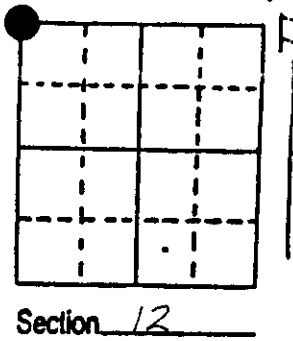


U.S. PUBLIC LAND SURVEY MONUMENT RECORD

Note: This form is intended and designed to fulfill all requirements of Wisconsin Administrative Code, Chapter A-E 7.08 U.S. Public Land Survey Monument Record (3) (a) (b) (c) (d) (e) (f) (g) (h) (i). An additional sheet may be added if necessary to conform with said requirements.

(a) Corner location: Township 36 North
 Range 6 East/West



Town/City/Village Nokomis
 County Oneida

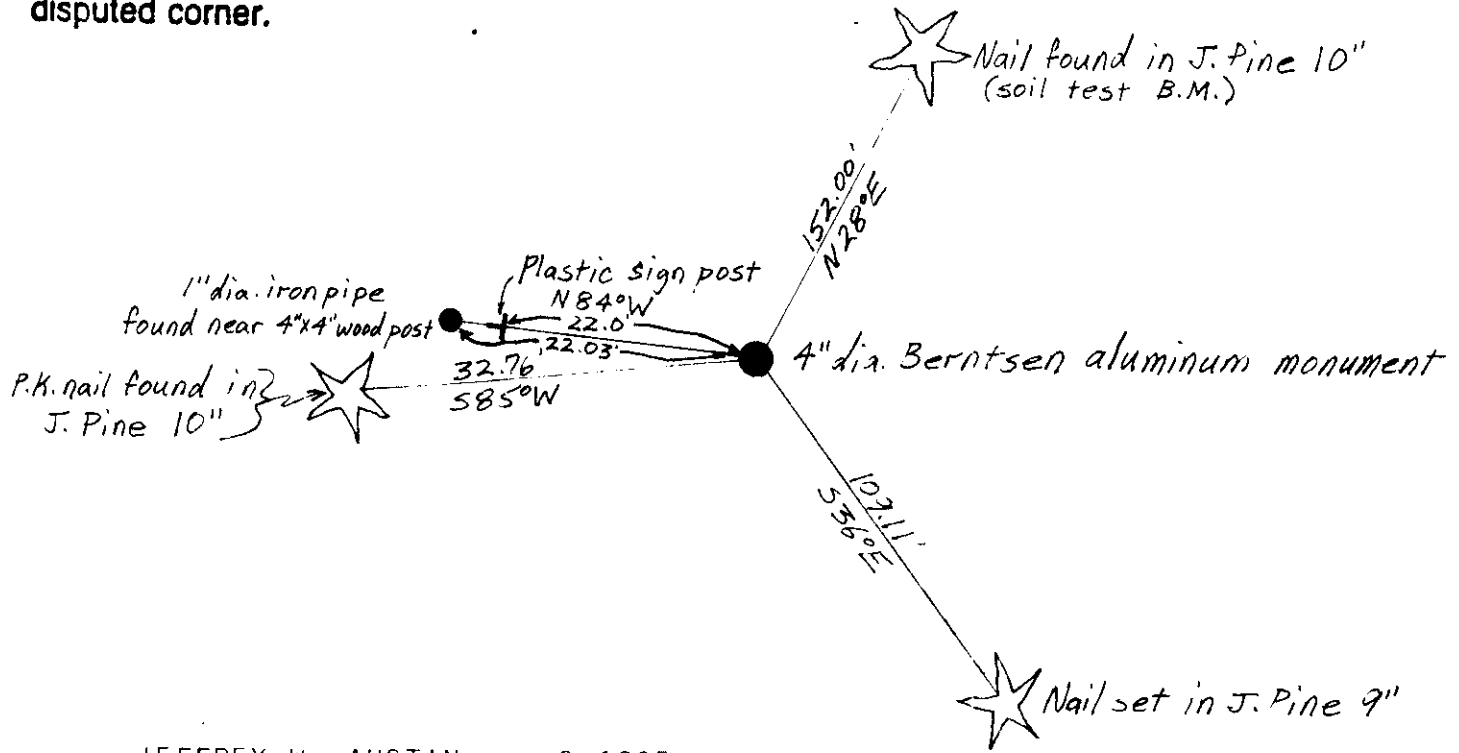
(b) (f) (g) (h) Description of monument found at this corner and if it was accepted, state all evidence (material, testimonial, occupational, plats, records, other monuments) used as a basis for accepting. If not accepted or if nothing was found, state evidence used as basis for establishing location. If reestablished through lost corner proportionate methods, indicate all monuments, distances and directions used to establish. Indicate type of monument found or set and sign post.

October, 1862, Joseph Jenkins set a wood post: Y.Pine 12" N53E, 73lks.
 B.Pine 7" S54E, 50lks., Y.Pine 12" N47W, 42lks., B.Pine 10" S82W, 24lks.

 5-8-74, William Scherer corner record shows corner as large spike:
 J.Pine 12" S48E, 58.93', J.Pine 10" S18W, 55.92', Wood W.C. with tag
 West, 22.1'.

 5-16-89, I found a 4' dia. alum. Berntsen Monument 4" below pavement
 (div. of highways): found FK nail in J.Pine 10" S85W, 32.76', found
 1" dia. iron pipe near 4" sq. wood post N84W, 22.03', found nail in
 J.Pine 10" N28E, 152.00' (soil test BM), set spike in J.Pine 9' S36E,
 109.11', set plastic survey marker sign N84W, 22.0'.

(c) (d) (e) Plan view of corner with ties to at least 4 witness monuments. If in disagreement with previously established corner, show the distances between the two corners and also indicate the ties to the disputed corner.



JEFFREY W. AUSTIN S-1885

(i) I, _____
 (type or print name) certify that the corner location on this record was determined by me or under my direction and control and that this U.S. Public Land Survey Monument Record is correct and complete to the best of my knowledge and belief.

Signature _____ Date JUNE 30, 1989



Index No. E-21