

This form is intended to fulfill the requirements of Chapter A-E 7.08 (3)(a) thru (l) U.S. Public Land Survey Monument Location Record, Wisconsin Administrative Code. Use the reverse side of form for continuation.

U.S. PUBLIC LAND SURVEY MONUMENT LOCATION RECORD

Recorders Data

USPLS CORNER: NORTH MC SECTION: 7 TOWNSHIP: 36 NORTH RANGE: 07 EAST

NAME OF WATERWAY FOR M.C. CORNER : OSCAR-JENNY LAKE SECTION LINE: WEST

(CITY)(VILLAGE)(TOWN) OF: WOODBORO COUNTY OF: ONEIDA

Description of monument found or placed and all other evidence used as the basis for monument location; including monuments and related measurements required if the corner location was reestablished by lost corner proportionate methods. Also indicate name of original surveyor, original survey date and the corner monument, bearing trees, witness or other reference monuments established; including measured bearing and distance ties, from available records.

Found and accepted an undisturbed old rusted 1" dia. iron pipe monument with uncapped top 21" above grade, which I left in place, and drove a standard 2" dia. by 30" long aluminum pipe monument over the iron pipe with stamped Oneida County cap 18" above grade as refusal encountered below grade. The corner falls 2.5' North of existing lake shoreline and is located about 125' Easterly along the lake shoreline from the public boat landing at the northwesterly corner of the lake. I further verified the corner location by reference measure from iron pipe monuments found to the West per the 1969 survey by William Cameron described below. This recovery completed June 15, 2000; no direct witnesses.

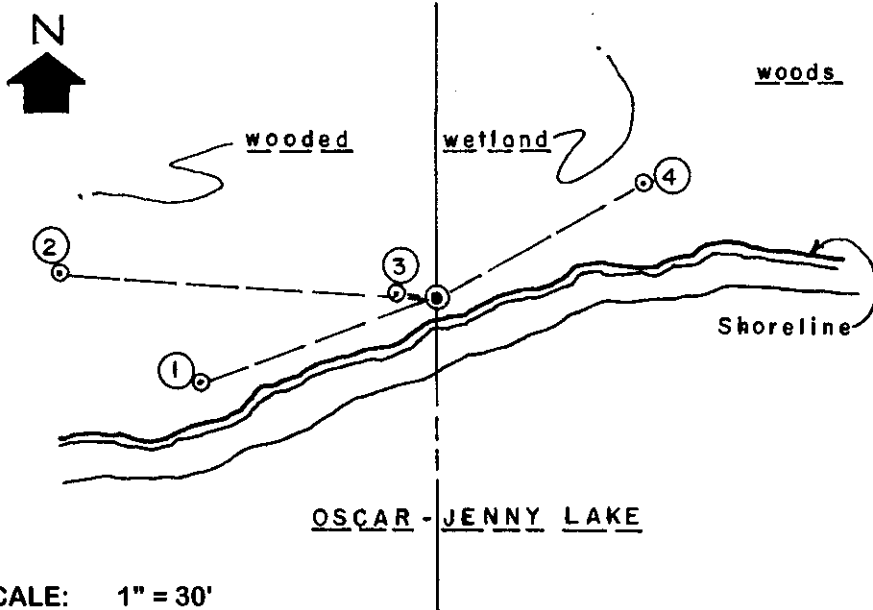
In September 1960, Alfred Millard/GLO, set a wood post as the original corner and marked new OBTs: 16" Py N54°E 84 links and a 14" Pw S63°W 32 links, all of which are now obliterated beyond corner recovery dependency.

In 1906, D.H. Vaughan set a new wood post at the MC from NE OBT found as a low stump and SW OBT found as a 4' high stub, both with marks; no new BTs were noted.

In 1957, an iron pipe is indicated at this corner per Owens-Illinois section control map prepared by William H. Stuth/RLS 1418 in 1987 and filed in Oneida County survey records.

In January 1969, William S. Cameron/RLS 112 notes an iron pipe at this corner per plat of survey by Northwoods Surveyors filed at the office of Foltz and Associates, Inc. Minocqua, Wisconsin. The 1974 county plat of Sunshine Shores also notes an iron pipe and post found at this MC corner location.

Plan view map of monument location with bearing and distance ties to a minimum of four(4) described witness or reference monuments of concrete, natural stone, iron, live bearing trees or equivalent material. If applicable, also show a minimum of two(2) bearing and distance ties to any other monument found and not accepted; including the bearing and distance from the accepted monument.



WITNESS MONUMENT TIES:

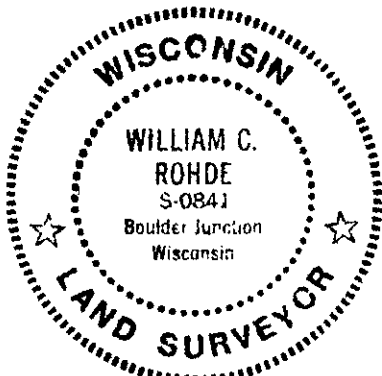
- ① New BT 12" Cedar S70°W 38.95; standard BT sign nailed to upper East face.
- ② New BT 9" Pr N87°W 58.86' to PK nail/washer in left face.
- ③ New BT 16" double trunk Maple N84°W 5.90'.
- ④ Old BT 18" Pr N60°E 37.20' with plain lower blaze scar on SW face.

I set a standard white poly "T" marker post 9" North of corner monument.

SCALE: 1" = 30'

Unless otherwise indicated, all bearing tree ties are to a .25" dia. by 2.5" long PK nail with a 1.25" dia. steel washer driven into unblazed right face and a .25" dia. by 2.5" long PK nail with a 2" dia. steel washer stamped BT is also driven into unblazed face of bearing tree at DBH; the basis for measured bearings is by compass to nearest degree and all tie distances are measured horizontal by steel tape corrected to nearest 1/100th feet at standard temperature of 68° F.

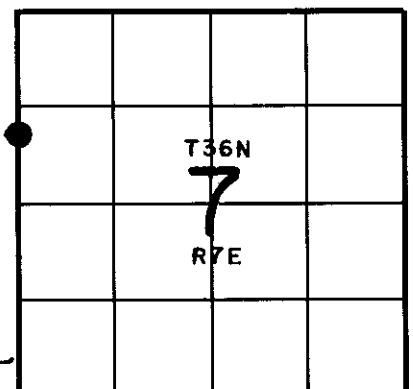
RLS SEAL:



LAND SURVEYOR CERTIFICATE:

I, William C. Rohde, hereby certify that I am duly licensed as a Professional Land Surveyor in the State of Wisconsin; that this USPLS monument location was determined by me and/or under my direct supervision and control; and that this U.S. Public Land Survey Monument Location Record is true and correct to the best of my knowledge and belief.

Signed: *William C. Rohde*
William C. Rohde RLS 841

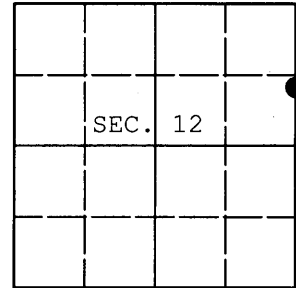


SECTION LOCATION MAP INDEX NO. F-G 1

U.S. PUBLIC LAND SURVEY MONUMENT RECORD

Note: This form is intended and designed to fulfill all requirements of Wisconsin Administrative Code, Chapter A-E 7.08 U.S. Public Land Survey Monument Record (3) (a) (b) (c) (d) (e) (f) (g) (h) (i). An additional sheet may be added if necessary to conform with said requirements.

(a) CORNER LOCATION: WISCRS (Oneida County)
 Meander Cor. of Secs. 7 & 12 N:
 Township 36 North E:
 Range 6 & 7 East of the 4th P.M. Datum:
 Town of Nokomis and Woodboro County of Oneida



(b) HISTORY OF ORIGINAL CORNER ESTABLISHMENT

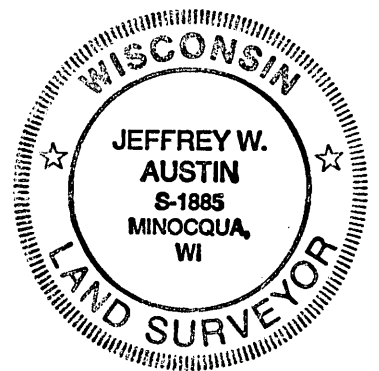
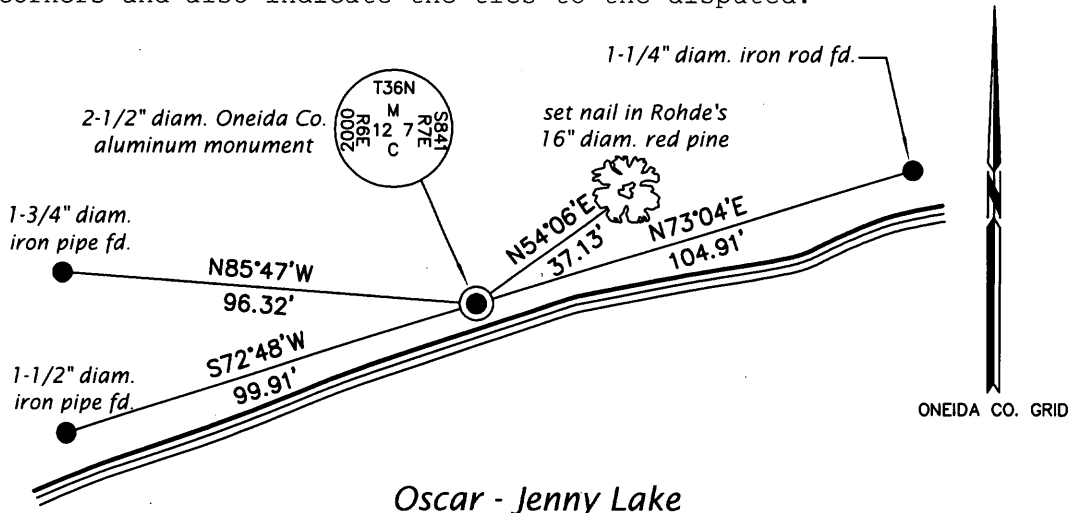
Original Surveyor: Alfred Millard Original Accessories:
 Date of Survey: Commenced: Aug., 1860 y. pine 16" N54°E, 84 lks.
 Completed: Sept., 1860 w. pine 14" S63°W, 32 lks.

(b) (f) (g) (h) Description of monument found at this corner and if it was accepted, state all evidence (material, testimonial, occupational, plats, records, other monuments) used as a basis for accepting. If not accepted or if nothing was found, state evidence used as basis for establishing location. If re-established through lost corner proportionate methods, indicate all monuments, distances and directions used to establish. Indicate type of monument and sign post found or set.

NOTE: This is a perpetuation of a previous USPLS Monument Record by William C. Rohde, RLS dated August 25, 2000 and filed in the office of the Oneida County Register of Deeds. A complete history of the corner can be found on the previous monument record. I accept the previous location as a true and faithful perpetuation or reestablishment of the original corner location and further perpetuate it as follows.

October 16, 2013: I found and accepted Rohde's monument, a 2-1/2" diam. aluminum pipe with 3-1/4" diam. Oneida Co. aluminum cap projecting 16" above the ground surface and 2 ft. North of the high water mark. All but one of Rohde's trees are dead or in poor condition. I found or established accessories as shown below and found a white plastic sign post adjacent to the monument.

(c) (d) (e) Plan view of corner with ties to at least 4 witness monuments. If in disagreement with previously established corner, show the distances between the two corners and also indicate the ties to the disputed.



REGISTER OF DEEDS OFFICE
 ONEIDA COUNTY
 FILED

DEC 23 2013

(i) I, Jeffrey W. Austin, Registered Land Surveyor No. S-1885, hereby certify that the corner location on this record was determined by me or under my direction and control and that this U.S. Public Land Survey Monument Record is correct and complete to the best of my knowledge and belief.

AT _____ O'CLOCK _____ M
 KYLE J. FRANSON
 REGISTER OF DEEDS

Signature _____

Date _____

DEC 9, 2013

3606122800 (INDEX NO. F,G-25)