

U.S. PUBLIC LAND SURVEY MONUMENT RECORD

REGISTER OF DEEDS OFFICE
ONEIDA COUNTY
FILED

JUN 01 2017

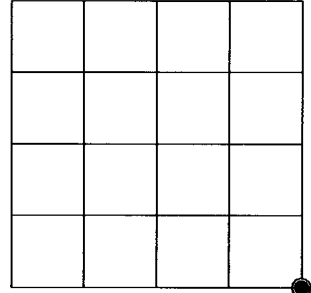
Note: This form is intended and designed to fulfill all requirements of the Wisconsin Administrative Code, Chapter A-E 7.08 U.S. Public Land Monument Record (3)(a)(b)(c)(d)(e)(f)(g)(h)(i). An additional sheet may be added if necessary to conform with said requirements.

(a) CORNER LOCATION: WISCRS - Oneida County
 Southeast Corner of Section 16 North: 150864.549 USft
 Township 36 North East: 181213.992 USft
 Range 6 East Latitude: 45° 35' 58.78784" N
 Town of Nokomis Longitude: 89° 44' 06.08388" W
 County of Oneida Datum: NAD 83(2011)
 GNSS Method: RTK - Direct
 GNSS Control: WISCRS VRS
 Record North: 150864.634 USft
 Record East: 181214.051 USft
 Record Datum: NAD 83(1991)

AT _____ O'CLOCK _____ M
 KYLE J. FRANSON
 REGISTER OF DEEDS

(RECORDING AREA)

SECTION 16



(b) HISTORY OF ORIGINAL CORNER ESTABLISHMENT

Original Surveyor: Joseph H. Jenkins
 Date of Survey: Commenced October 13, 1862
 Completed October 28, 1862
 Original B.T.'S: Yellow Pine 12" N 87°W, 62 lks.
 No other trees near.

(f)(g)(h) DESCRIPTION OF MONUMENT FOUND AT THIS CORNER AND IF IT WAS ACCEPTED, STATE ALL EVIDENCE (MATERIAL, TESTIMONIAL, OCCUPATIONAL, PLATS, RECORD, OTHER MONUMENTS) USED AS A BASIS FOR ESTABLISHING LOCATION. IF NOT ACCEPTED OR IF NOTHING WAS FOUND, STATE EVIDENCE USED AS BASIS FOR ESTABLISHING LOCATION. IF REESTABLISHED THROUGH LOST CORNER PROPORTIONATE METHODS, INDICATE ALL MONUMENTS, DISTANCES AND DIRECTIONS USED TO ESTABLISH. INDICATE TYPE OF MONUMENT AND SIGN POST FOUND OR SET.

May 1901 - D. H. Vaughan, County Surveyor, (Old Field Book 3, pages 24, 25, 30 and Dorr-Vaughan Book, pages 27 and 391) survey in Section 15, T36N, R6E, set corner corner equidistant between corners.

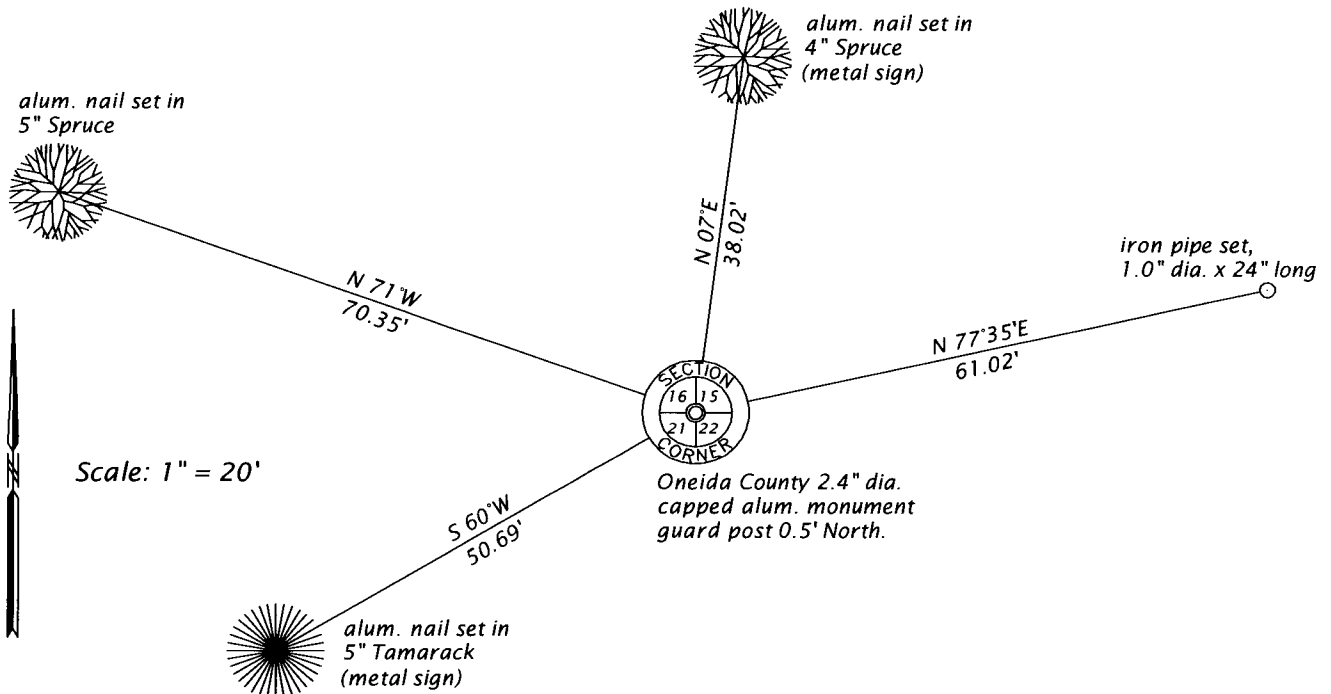
December 6, 1903 - D. H. Vaughan, County Surveyor, (Dorr-Vaughan Book, page 32) survey in Section 22, T36N, R6E, NW cor. found post & B.T. made by me 1901: B. Pine 8" N36 1/2°W, 36 links; B. Pine 8" S62°E, 26 links.

August 8, 1986 - William H. Stuth, RLS No. 1418, OWENS-ILLINOIS (Ownership Boundary Survey, map filed in NEPCO Book 1, page 49) survey in Section 16, T36N, R6E, legends corner "BY OTHERS".

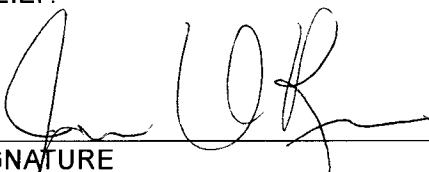
(CONTINUED ON REVERSE PAGE)

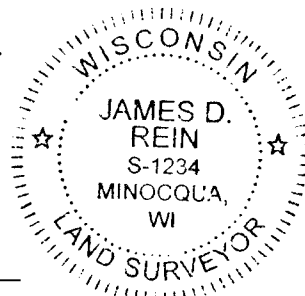
The coordinate value shown has been verified by at least one of the following methods: 1) comparison to a previously GPS determined published value; 2) the value is the average of two or more GPS observations at a markedly different time; 3) one or more distances were measured back to the GPS observed corner from temporary GPS observed offset locations.

(c)(d)(e) PLAN VIEW OF CORNER WITH TIES TO AT LEAST 4 WITNESS MONUMENTS. IF IN DISAGREEMENT WITH PREVIOUSLY ESTABLISHED CORNER, SHOW THE DISTANCE BETWEEN THE TWO CORNERS AND ALSO INDICATE THE TIES TO THE DISPUTED CORNER.



(i) I, JAMES D. REIN, PROFESSIONAL LAND SURVEYOR NO. S-1234 HEREBY CERTIFY THAT THE CORNER LOCATION ON THIS RECORD WAS DETERMINED BY ME OR UNDER MY DIRECTION AND CONTROL AND THAT THIS U.S. PUBLIC LAND SURVEY MONUMENT RECORD IS CORRECT AND COMPLETE TO THE BEST OF MY KNOWLEDGE AND BELIEF.

 5-24-17
 SIGNATURE DATE



INDEX NO. N - 13
 3606160000

(CONTINUED FROM REVERSE PAGE)

October 29, 1991 - Lester Schmit, RLS No. 1192, Timberland Surveyors, map of survey filed as C1245 in county surveyor's office, legends corner "BERNTSEN MONUMENT (O.C.M.) SET THIS SURVEY OR FOUND IN PLACE".

March 17, 2017 - James D. Rein, PLS No. 1234, we recovered an Oneida County capped, 2.4" dia. aluminum monument. I accept this monumented corner position, based on my analysis of the Oneida County published coordinate positions of controlling corners, as a good faith re-establishment of the corner by double proportionate measurement, and we made reference ties as shown in the plan.