

U.S. PUBLIC LAND SURVEY MONUMENT RECORD

NOTE: THIS FORM IS INTENDED AND DESIGNED TO FULFILL ALL REQUIREMENTS OF WISCONSIN ADMINISTRATIVE CODE, CHAPTER A-E 7.08 U.S. PUBLIC LAND SURVEY MONUMENT RECORD (3) (a) (b) (c) (d) (e) (f) (g) (h) (i). AN ADDITIONAL SHEET MAY BE ADDED IF NECESSARY TO CONFORM WITH SAID REQUIREMENTS.

(a) CORNER LOCATION: TOWNSHIP 36 NORTH
RANGE 6 EAST ~~WEST~~
TOWN ~~XXXXXXXXXX~~ NOKOMIS
COUNTY ONEIDA



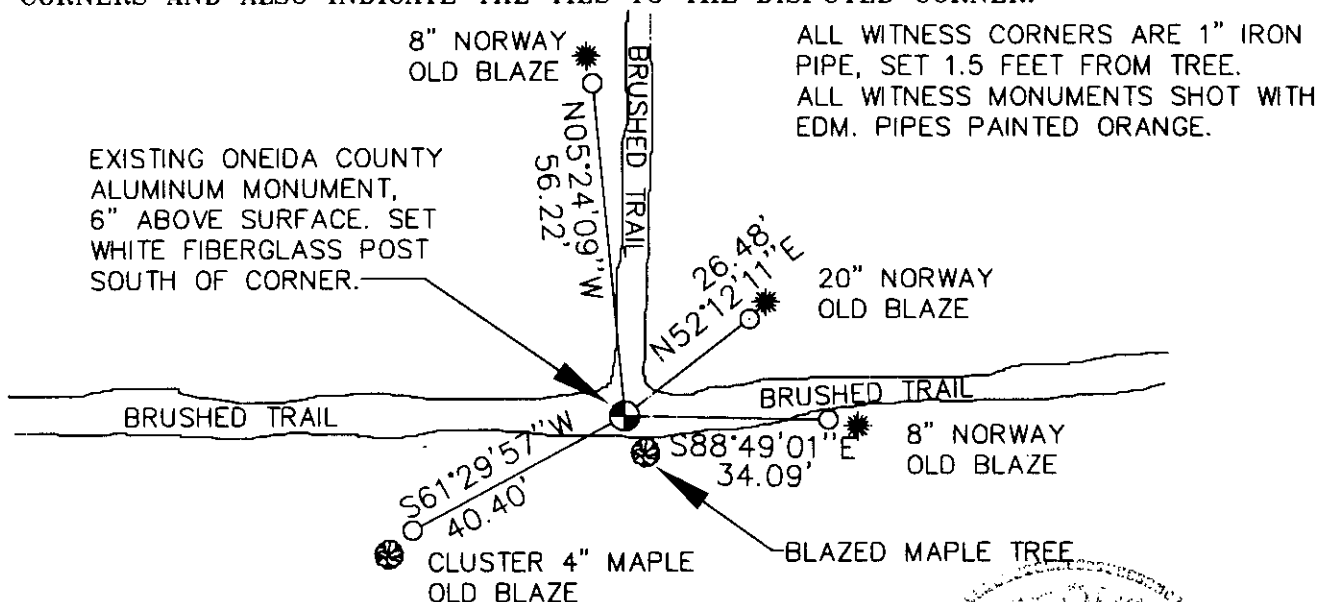
SECTION 21

(b) (f) (g) (h) DESCRIPTION OF MONUMENT FOUND AT THIS CORNER AND IF IT WAS ACCEPTED, STATE ALL EVIDENCE (MATERIAL, TESTIMONIAL, OCCUPATIONAL, PLATS, RECORDS, OTHER MONUMENTS) USED AS BASIS FOR ACCEPTING. IF NOT ACCEPTED OR IF NOTHING WAS FOUND, STATE EVIDENCE USED AS BASIS FOR ESTABLISHING LOCATION. IF REESTABLISHED THROUGH LOST CORNER PROPORTIONATE METHODS, INDICATE ALL MONUMENTS, DISTANCES AND DIRECTIONS USED TO ESTABLISH. INDICATE TYPE OF MONUMENT FOUND OR SET AND SIGN POST.

CORNER ORIGINALLY SET BY JOSEPH JENKINS IN OCTOBER, 1862. A SECTION SUMMARY BY STUTH (S-1418) SAYS THEY FOUND AN EXISTING PIPE AT THIS CORNER. ON 9-12-97, I WALKED DOWN BRUSHED TRAIL, AND FOUND AN EXISTING ONEIDA COUNTY ALUMINUM MONUMENT. THE TOP IS STAMPED FOR 1/4 CORNER, 21-16. AFTER TRAVERSING AROUND SECTION, HELD MONUMENT AS BEST EVIDENCE FOR CORNER. TIED OUT, SETTING IRON PIPE NEAR BASE OF TREES THAT WERE BLAZED AS BEARING TREES, PROBABLY CIRCA 1986. MADE MINOR SEARCH OF WOODS, MOST TREES ARE YOUNG, FOUND NO OTHER EVIDENCE OF CORNER OR WITNESS TO DISPUTE THIS LOCATION.

SEE SECTION SUMMARY ON BACK

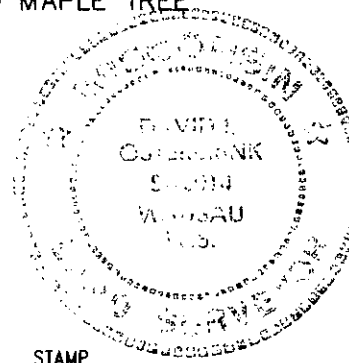
(c) (d) (e) PLAN VIEW OF CORNER WITH TIES TO AT LEAST 4 WITNESS MONUMENTS. IF IN DISAGREEMENT WITH PREVIOUSLY ESTABLISHED CORNER, SHOW THE DISTANCES BETWEEN THE TWO CORNERS AND ALSO INDICATE THE TIES TO THE DISPUTED CORNER.



(i) I, DAVID L. OSTERBRINK RLS S-2014
(TYPE OR PRINT NAME) CERTIFY THAT THE CORNER LOCATION ON THIS RECORD WAS DETERMINED BY ME OR UNDER MY DIRECTION AND CONTROL AND THAT THIS U.S. PUBLIC LAND SURVEY MONUMENT RECORD IS CORRECT AND COMPLETE TO THE BEST OF MY KNOWLEDGE AND BELIEF

David L. Osterbrink
SIGNATURE

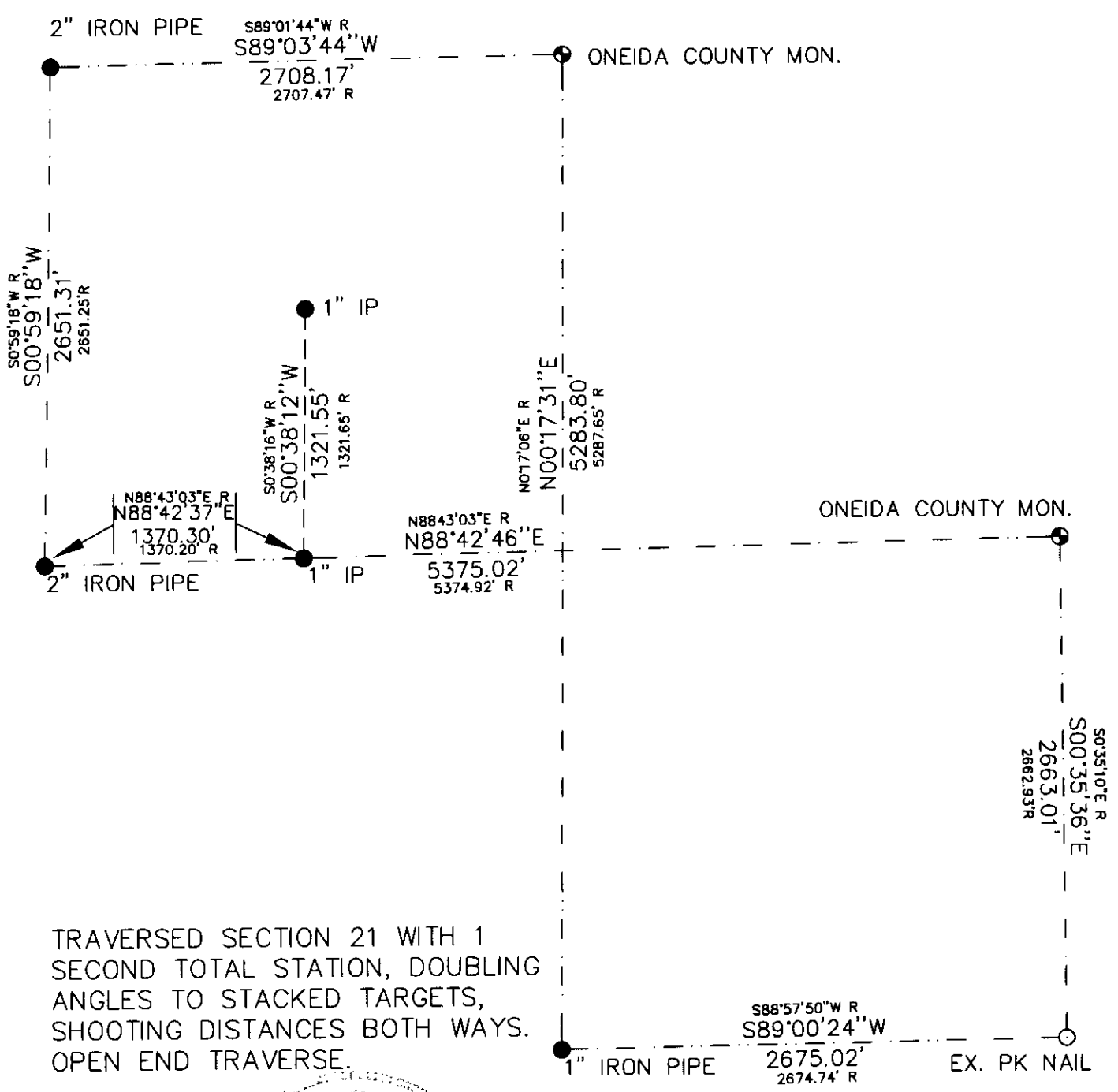
9-22-97
DATE



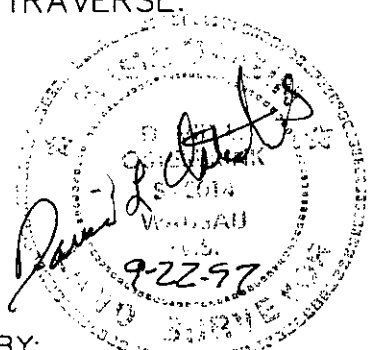
INDEX NO. 211

SECTION SUMMARY

SECTION 21, TOWNSHIP 36 NORTH, RANGE 6 EAST,
TOWN OF NOKOMIS, ONEIDA COUNTY.

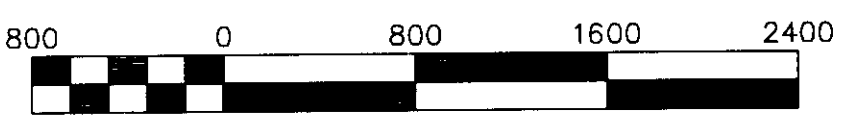


TRAVERSED SECTION 21 WITH 1
SECOND TOTAL STATION, DOUBLING
ANGLES TO STACKED TARGETS,
SHOOTING DISTANCES BOTH WAYS.
OPEN END TRAVERSE.



PREPARED BY:
NORTHWOODS SURVEYING
623 JEFFERSON STREET
WAUSAU, WI. 54403
715-845-1249

BEARINGS REFERENCED
TO WEST LINE NW 1/4
SECTION 21. ASSUMED
BEARING FROM SUTH
SECTION SUMMARY.
R (RECORD) DIMENSIONS
SHOWN ARE SUTH
MEASUREMENTS



Scale 1" = 800'