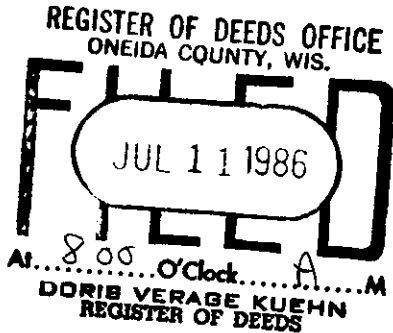
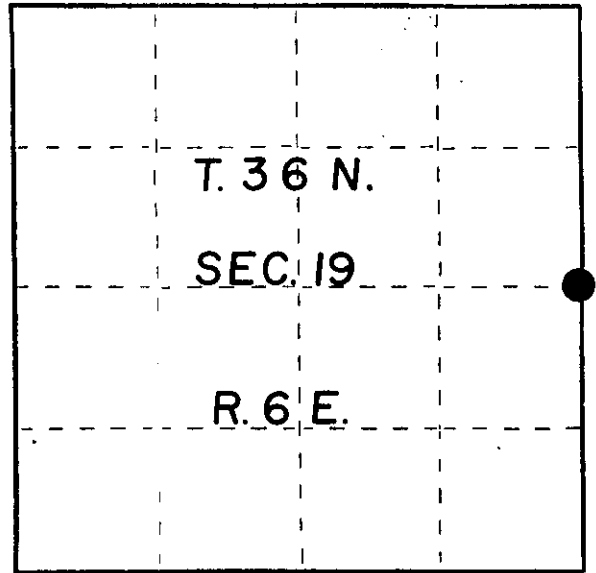


# U. S. PUBLIC LAND SURVEY MONUMENT RECORD

**INSTRUCTIONS:** This record shall show the location of the corner and shall include all of the following nine elements (a through i).

- (a) Identify the corner by reference to the U.S. public land survey system.  
 ○ = Corner monument restored.

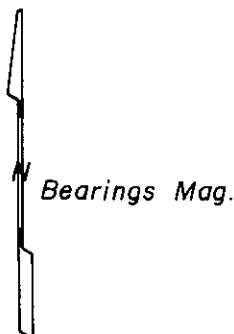
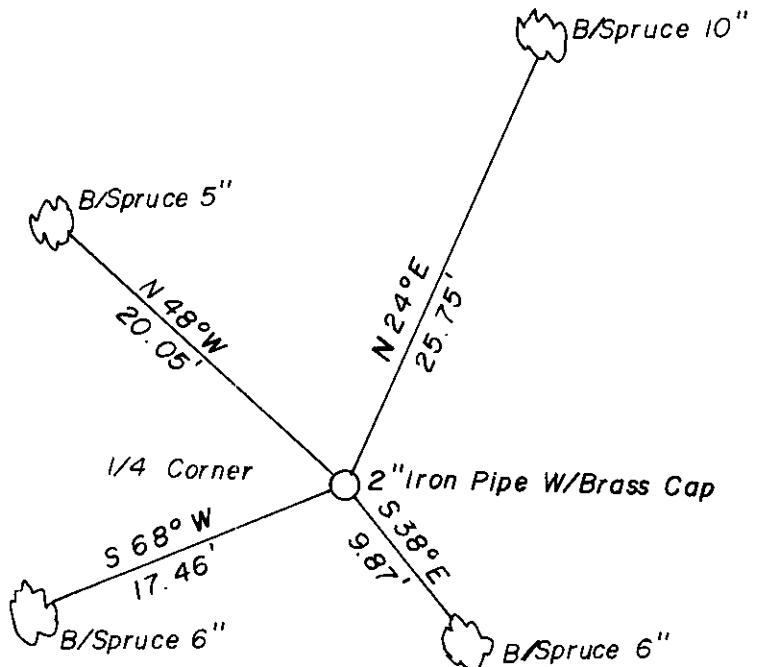
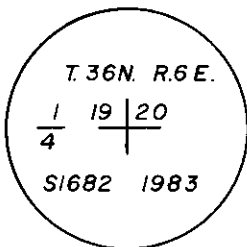


(b) Describe any record evidence, monument evidence, occupational evidence, testimonial evidence or any other material evidence you considered, and whether the monument was found or placed.  
 Re-established quarter section corner by retracement. Accepted an old East-West quarter line fence running from quarter section corner between Sections 19 & 24 T36N R5 & 6E to old C 1/4 of Section 19. Ran North-South line to check for position of alignment and the relation to a proportionate measurement. I believe from evidence that the 1/4 corner between Sections 19 & 20 was present when old C 1/4 corner was established. Extended East-West quarter line alignment to intersect Section line between Sections 19 & 20. At this point re-established 1/4 corner.

(c) In the plan view drawing below, provide reference ties to at least 4 witness monuments, or, if the location is within a municipality, to at least 2 witness monuments. (Witness monuments shall be made of concrete, natural stone, iron or other equally durable material.) Describe witness monuments.

(d) Show a plan view drawing depicting the relevant monuments and reference ties which is sufficient in detail to enable accurate relocation of the corner monument if the corner monument is disturbed. Indicate north.

Brass Cap Stamped:



SCALE: 1" = 10'

P-5

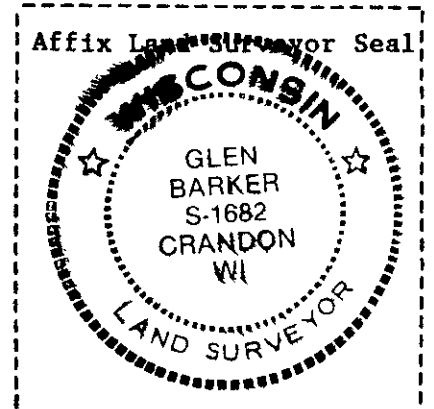
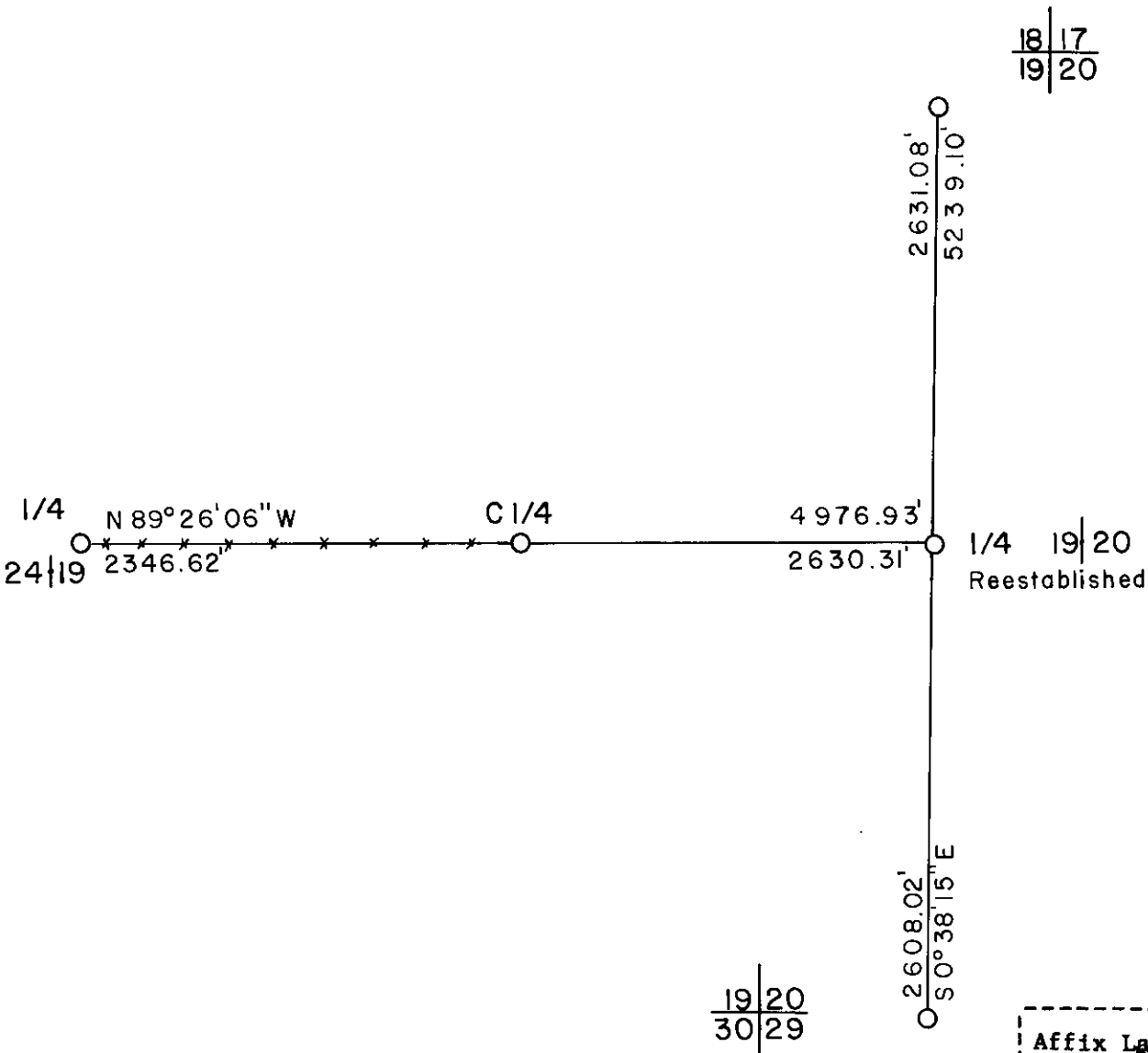
(e) Describe any material discrepancy between the location of the corner as restored or reestablished and the location of that corner as previously restored or reestablished by distance and direction. Show the discrepancy on the plan view drawing under (d), above. Show the distances between the corner as previously restored or reestablished and (1) the corner as restored or reestablished, and (2) to at least 2 of the witness monuments shown on the drawing in (d), above.

See drawing below.

(f) Was the corner restored through acceptance of (1) an obliterated evidence location, or, (2) a found perpetuated location?

(g&h) Was the corner reestablished through lost corner proportionate methods? If so, show the method, including the directions and distances to other public land survey corners used as evidence or used for proportioning in determining the corner location?

Corner re-established by retracement.



(i) I, \_\_\_\_\_ (type or print name) certify that the corner location shown on this record was determined by me or under my direction and control and that this U.S. Public Land Survey Monument Record is correct and complete to the best of my knowledge and belief.

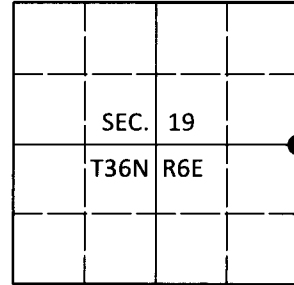
Signature Glen Barker Date 5/21/84

**U.S. PUBLIC LAND SURVEY MONUMENT RECORD**

Note: This form is intended and designed to fulfill all requirements of Wisconsin Administrative Code, Chapter A-E 7.08 U.S. Public Land Survey Monument Record (3)(a-i).

(a) CORNER LOCATION  
 1/4 Cor. of Secs. 19 & 20  
 Township 36 North  
 Range 6 East of the 4th P.M.  
 Town of Nokomis  
 County of Oneida

WISCORS - Oneida County  
 N: 148,026.53 USft  
 E: 170,558.72 USft  
 Datum: NAD 83(2011)  
 GNSS Method: RTN - Direct  
 GNSS Control: WISCORS VRS



(b) HISTORY OF ORIGINAL CORNER ESTABLISHMENT

Original Surveyor: \_\_\_\_\_ Original Accessories: \_\_\_\_\_  
 Date of Survey Commenced: \_\_\_\_\_ See previous monument record(s)  
 Completed: \_\_\_\_\_

(b)(f)(g)(h) Description of monument found at this corner and if it was accepted, state all evidence (material, testimonial, occupational, plats, records, other monuments) used as a basis for accepting. If not accepted or if nothing was found, state evidence used as basis for establishing location. If re-established through lost corner proportionate methods, indicate all monuments, distances and directions used to establish. Indicate type of monument and sign post found or set.

*This is a perpetuation of the following monument record(s) that comprise a complete history of the corner:*

*May 21, 1984: USPLS Monument Record No. 3606192000 by Glen Barker, PLS*

*June 18, 2020: I found and accepted the record monument, a 2.4" diam. iron pipe with a 2.4" diam. brass cap projecting 24" above the ground surface. It appears there was an issue noting the record bearing trees - the locations bear little resemblance to the record. I found or established accessories as shown below. I found a white vinyl sign post bearing East, 0.8 ft.*

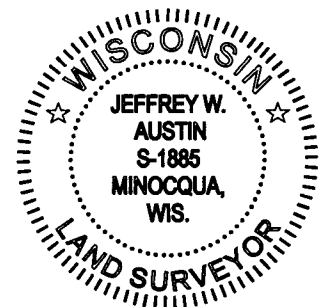
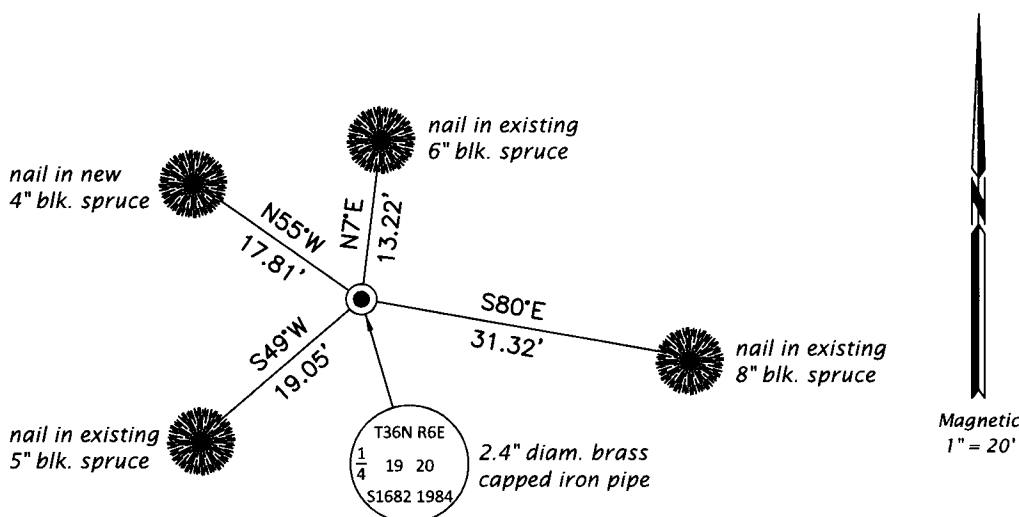
*The coordinate value shown has been verified by at least one of the following methods: 1) comparison to a previously GPS determined published value; 2) the value is the average of two or more GPS observations at a markedly different time; 3) one or more distances were measured back to the GPS observed corner from temporary GPS observed offset locations.*

REGISTER OF DEEDS OFFICE  
 ONEIDA COUNTY  
 FILED

SEP 04 2020

KYLE J. FRANSON  
 REGISTER OF DEEDS

(c)(d)(e) Plan view of corner with ties to at least 4 witness monuments. If in disagreement with previously established corner, show the distances between the two corners and also indicate the ties to the disputed.



(i) I, Jeffrey W. Austin, Professional Land Surveyor No. S-1885, hereby certify that the corner location on this record was determined by me or under my direction and control and that this U.S. Public Land Survey Monument Record is correct and complete to the best of my knowledge and belief.

\_\_\_\_\_  
 Signature Date Aug. 27, 2020