

CERTIFIED LAND CORNER RESTORATION

State of Wisconsin }
County of Oneida } ss.

I, John H. Fisher, do hereby certify that on the 26th day of February, 1981, I found evidence of the southeast corner of Section 32 Township 36N Range 6E, Fourth Principal Meridian, as described hereon; and that from this evidence I established a new monument and accessories as described hereon to perpetuate the original location of this corner:

Description of original monument and accessories and subsequent restorations:

The original Gov't. survey was performed by Herman C. Fellow, Deputy Surveyor in May 1859.

- Set wood post
- 12' Yellow Pine, N30°E, 63 links
- 12' Yellow Pine, S58°E, 60 links
- 11' White Pine, S15°W, 43 links
- 15' Yellow Pine, N70°W, 121 links

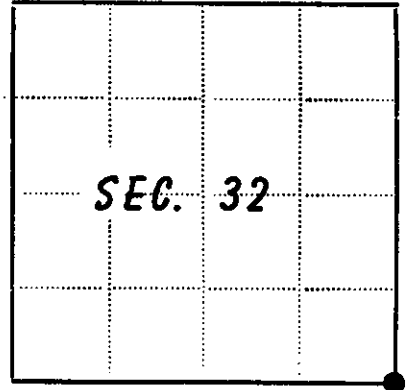
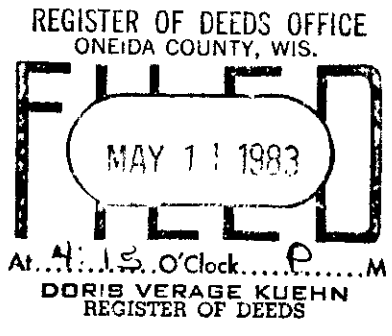
Description of corner evidence found:

- Found 2' iron pipe with 1' iron pipe inside
- 12' Oak, S16°W, 16.7 feet
- 14" Double White Birch S33°E, 39.4 feet
- 12" Twin Oak N66°E, 70.1 feet

Description of monument and accessories I established to perpetuate the location of this corner:
Found corner and bearing trees in good shape and in no need of perpetuation.

COMPARED WITH ALL RECORD DATA & ACCEPTED AS CORRECT.

Robert H. Minak
ONEIDA CO. SURVEYOR 27 APR. 1983



● - Corner monument restored
□ -

Resident witnesses None

Dated at Minocqua Wisconsin, this 13 day of March 1981

Signature *John H. Fisher* Title Registered Land Surveyor
(County Surveyor, Registered Land Surveyor, or other duly authorized official)

Surveyors Registration No. S-836

Office of _____ County of _____

I hereby certify that the within instrument was filed in this office for record on the _____ day of _____ 19____, and was filed in Book No. _____ Page No. _____ of County Records.

Signature _____ Title _____

Township _____, Range _____, Section _____, Index No. _____, Page No. _____

3606320000

2-9

U.S. PUBLIC LAND SURVEY MONUMENT LOCATION RECORD

Recorders Data

CORNER: SW Section SECTION: 33 TOWNSHIP 36 NORTH RANGE 6 EAST/WEST

FOR M.C. CORNER INDICATE: NAME OF WATERWAY N/A SECTION LINE N/A

(CITY)(VILLAGE)(TOWN) OF: Nokomis COUNTY OF: Oneida

Description of monument found or placed and all other evidence used as a basis for monument location; including all monuments and related measurements required if the corner location is reestablished by lost corner proportionate methods. Also indicate name of original surveyor, survey date, corner monument set and established bearing trees, witness or reference monuments with ties from available records.

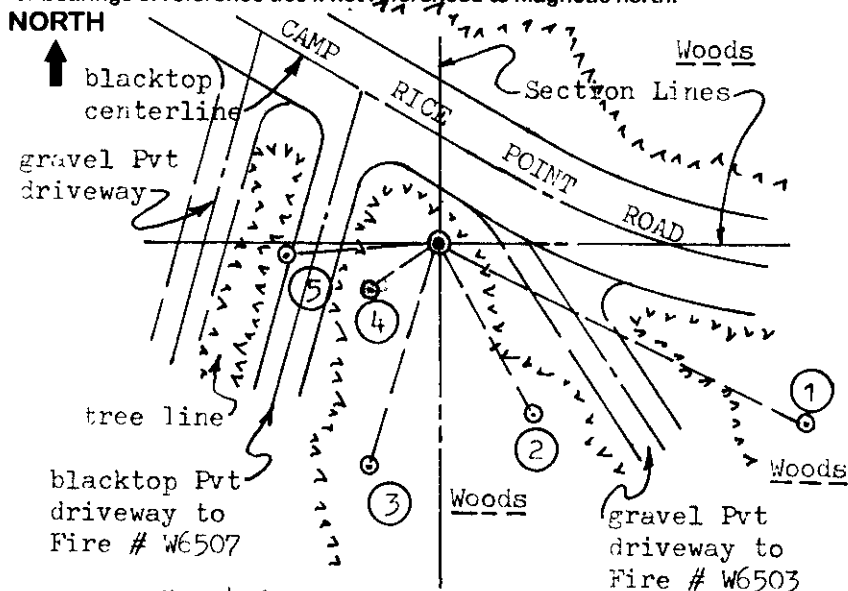
Found and accepted an undisturbed standard 2" dia. by 30" long aluminum pipe monument at this corner location, with unstamped Oneida County cap 1" below existing grade, as set by L. Schmit/Tomahawk in place of an old iron pipe monument per my personal query with him on June 9, 1998 at his office. I die stamped the monument cap with corner identity. In 1862, Jenkins/GLO set a wood post as the original corner and marked BTs, an 8" Hemlock S10°W 2 lks, an 8" Hemlock N15°W 18 lks, a Maple S25°E 2 lks and a Cedar N45°E 8 lks, all of which are now obliterated.

During our meeting, Schmit further confirmed that several surveys had been previously referenced to the remonumented corner location, so my acceptance is based upon location by common report.

This recovery was completed on June 8, 1998, and was witnessed by Charles Schlagenhafts, adjoining owner at Fire No. W6507 South of the corner.

I set a standard white poly marker 'T' post 6" South of the corner monument.

Plan view map of monument location with bearing and distance ties to a minimum of four(4) described witness or reference monuments of concrete, natural stone, iron, live bearing trees or equivalent material. If applicable, also show a minimum of two(2) bearing and distance ties to any other monument found and not accepted; including the bearing and distance from the accepted monument. Indicate the basis for bearings of reference ties if not referenced to magnetic north.



WITNESS MONUMENT TIES:

- ① New BT West 11" trunk of twin Bw S64°E 85.37'.
- ② Old BT 16" NE trunk of twin Bw with lower blaze partly open with scribing, S29°E 40.20' to PK nail & washer in left face.
- ③ New BT center 14" trunk of triple Or S17°W 48.28'.
- ④ Old BT 17" Or with lower face blaze open with scribing and PK nail in center with ribbon, S56°W 16.85' to PK nail & washer in right face.
- ⑤ 2" dia. iron pipe found flush to grade S86°W 31.26' at surveyed parcel corner per witness/owner.

SCALE: 1" = 40'

Unless otherwise indicated, all bearing tree ties are to a .25" dia. by 2.5" long PK nail with a 1.25" dia. steel washer driven into unblazed right face and a .25" dia. by 2.5" long PK nail with a 2" dia. steel washer stamped 'BT' is also driven into unblazed face of bearing tree at DBH; the basis for measured bearings is magnetic to nearest degree and all tie distances are horizontal measure to nearest 1/100th feet.

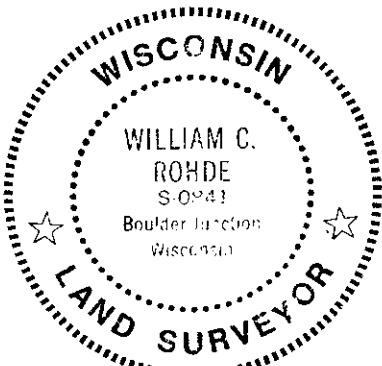
LAND SURVEYOR CERTIFICATION:

I, William C. Rohde, hereby certify that I am a duly licensed Professional Land Surveyor in Wisconsin, that this USPLS monument location was determined by me or under my direction and control, and that this U.S. Public Land Survey Monument Location Record is true and correct to the best of my knowledge and belief.

William C. Rohde Date: 6/11/98
Signature

	33		

INDEX NO. 29



RLS SEAL

SHEET NO. 1 OF 1

This form is intended to fulfill requirements of Chapter A-E 7.08 (3)(a)(b)(c)(d)(e)(f)(g)(h)(i) U.S. Public Land Survey Monument Location Record, Wisconsin Administrative Code. Use reverse side for geodetic location data and/or continuation purposes.

SECTION LOCATION MAP

INDEX NO. 29

3606320000

AUG 22 2019

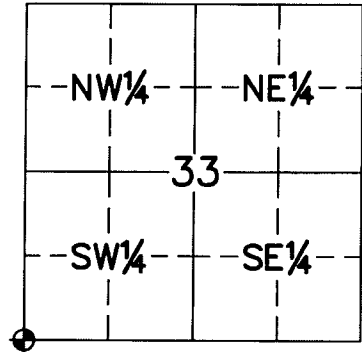
KYLE J. FRANSON
REGISTER OF DEEDS

U.S. PUBLIC LAND SURVEY MONUMENT RECORD ONEIDA COUNTY, WISCONSIN.

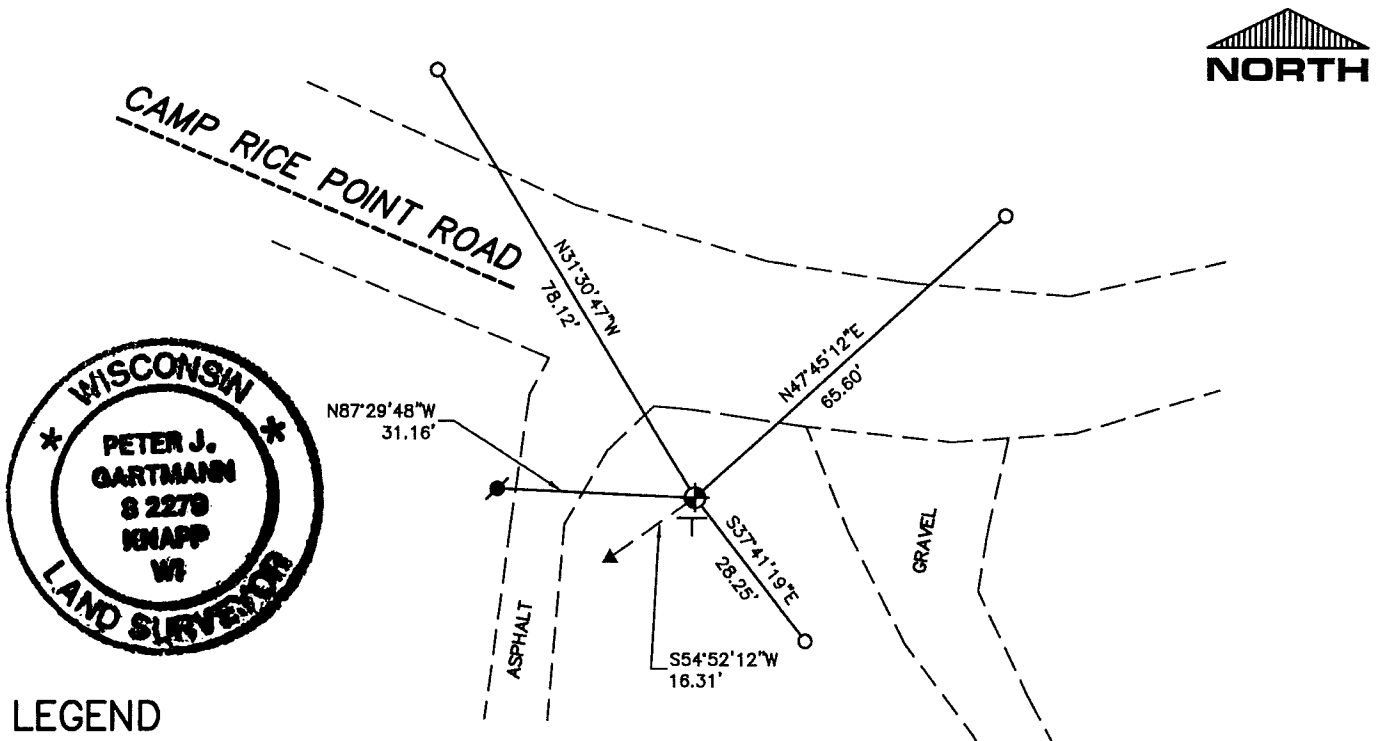
In accordance with Wisconsin Administrative Code, Chapter A-E 7.08 (3) (a)-(i) SIDE 1 OF 2

LOCATION (a) The identity of the corner, as referenced to the U.S. Public Land Survey System.

SECTION 33 - TOWN 36 NORTH - RANGE 6 EAST
TOWNSHIP OF _____ NOKOMIS
TYPE OF CORNER _____ SOUTHWEST
TYPE OF MONUMENT _____ ALUMINUM CAP
PLSS IDENTIFIER NUMBER _____
NORTHING _____
EASTING _____



PLAN VIEW (c) Reference to at least 4 witness monuments. Witness monuments shall be concrete, natural stone, iron, bearing trees or other equally durable material, except wood other than bearing trees; (d) A plan view drawing depicting the relevant monuments and reference ties which is sufficient in detail to enable accurate relocation of the corner monument if the corner monument is disturbed; (e) A description of any material discrepancy between the location of the corner as restored or reestablished and the location of that corner as previously restored or reestablished;



LEGEND

- ⊙----- FOUND ALUMINUM CAP MONUMENT
- ▲----- FOUND BEARING TREE WITH PK IN CENTER FACE BLAZE
- ⊕----- FOUND 2" OUTSIDE DIAMETER IRON PIPE
- SET 3/4" x 18" REBAR
WEIGHING 1.50 POUNDS PER LINEAR FOOT
- T----- FOUND PLASTIC T SIGN

BEARING ORIENTATION:
ONEIDA COUNTY GRID BEARINGS
ROUNDED TO THE NEAREST 1 MINUTE
HORIZONTAL SCALE: 1" = 30 FEET ±

3606320000
29

RECOVERY PROCEDURES

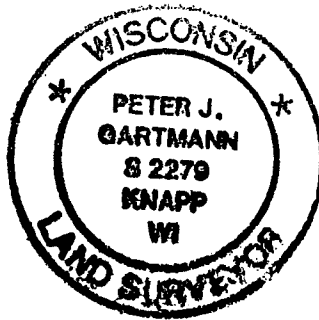
(f) Whether the corner was restored through acceptance of an obliterated evidence location or a found perpetuated location;

WILLIAM C. RHODE, JUNE, 1998:

FOUND AND ACCEPTED AN UNDISTURBED 2" DIAMETER ALUMINUM PIPE MONUMENT AT THIS LOCATION. DIE STAMPED MONUMENT CAP WITH CORNER IDENTITY.

PETER GARTMANN, JULY, 2019:

FOUND AND ACCEPTED AN UNDISTURBED ALUMINUM MONUMENT AT THIS LOCATION. TWO TIES FROM PREVIOUS TIE SHEET WERE FOUND AND THREE NEW TIES WERE SET.



SURVEYOR'S CERTIFICATE

Chapter 7.08 (3) (i)

I, PETER J. GARTMANN, HEREBY CERTIFY THAT THE U.S. PUBLIC LAND SURVEY MONUMENT RECORD SHOWN WAS DETERMINED BY ME OR UNDER MY DIRECTION AND IS CORRECT AND COMPLETE TO THE BEST OF MY KNOWLEDGE AND BELIEF.

A handwritten signature in black ink, appearing to read "P. J. Gartmann".

8.8.19

PETER J. GARTMANN
 WISCONSIN PROFESSIONAL LAND SURVEYOR S-2279
 Real Land Surveying
 1360 International Drive
 Eau Claire, WI 54701

DATE

3606320000
Z-9