

U.S. PUBLIC LAND SURVEY MONUMENT RECORD

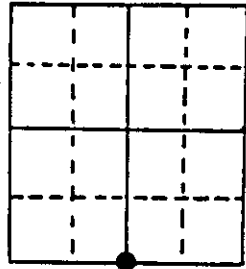
Note: This form is intended and designed to fulfill all requirements of Wisconsin Administrative Code, Chapter A-E 5.02, U.S. Public Land Survey Monument Record (3) (a) (b) (c) (d) (e) (f) (g) (h) (i). An additional sheet may be added if necessary to conform with said requirements.

(a) Corner location: Township 36 North
 Range 6 East/West
 Town/City/Village Nokomis
 County Oneida

REGISTER OF DEEDS OFFICE
 ONEIDA COUNTY, WIS.

APR 24 1987

 At 8:00 O'Clock A M
 DORIS VERAGE KUEHN
 REGISTER OF DEEDS



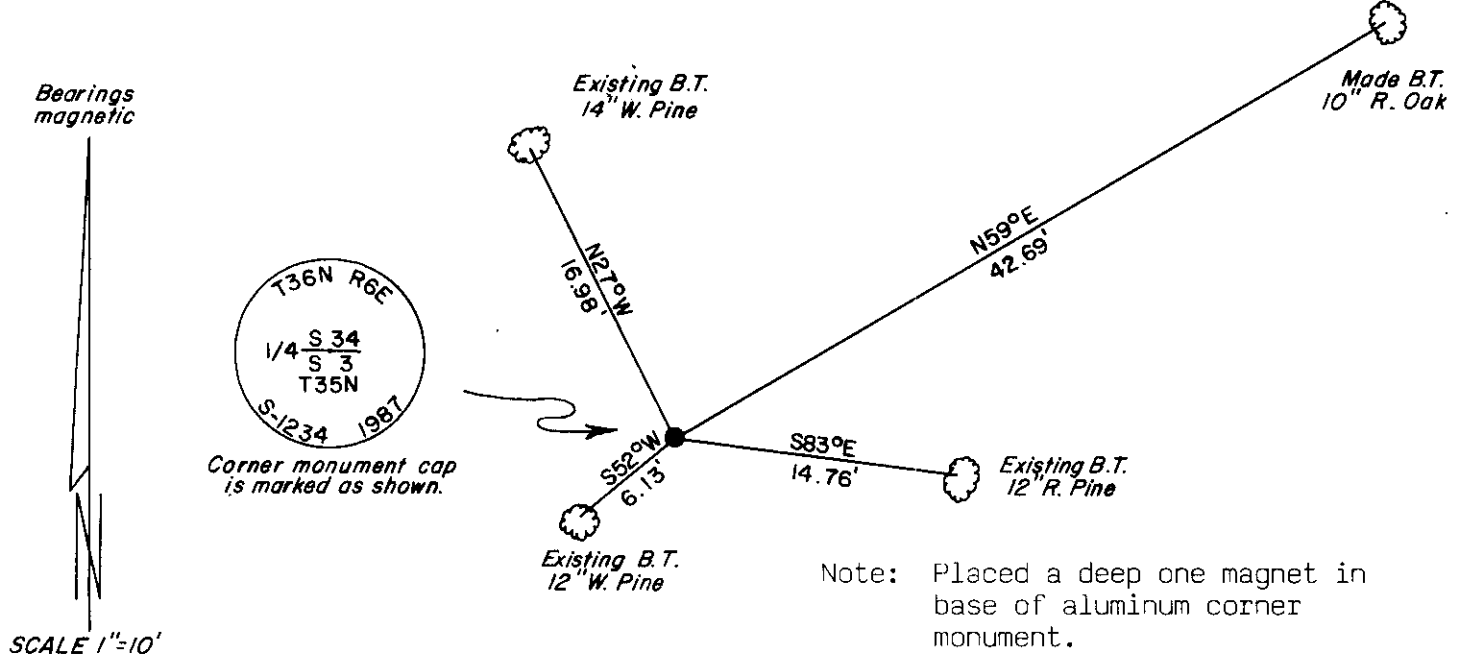
Section 34

(b) (f) (g) (h) Description of monument found at this corner and if it was accepted, state all evidence (material, testimonial, occupational, plats, records, other monuments) used as a basis for accepting. If not accepted or if nothing was found, state evidence used as basis for establishing location. If reestablished through lost corner proportionate methods, indicate all monuments, distances and directions used to establish.

August 31st, 1860 - Alfred Millard, Deputy Surveyor - Set 1/4 Sec. Post. Original bearing tree: Spruce Pine 6" S88°E, 535 lks.
 December 21st, 1905 - D. Vaughan, Oneida County Surveyor - Re-established corner position New bearing trees: B. Pine 10" N41°W, 119 1/2 lks; W. Pine 7" S61°E, 45 1/2 lks.
 May 1st, 1948 - F. R. Wincentzen, Oneida County Surveyor - Found corner monumented with steel fence post.
 February 24th, 1987 - James D. Rein, Registered Land Surveyor, accepted a found 2" dia. x 30" long iron pipe flush with ground level as monumenting corner position. A steel fence post was found driven into iron pipe. Existing bearing trees: 12" W. Pine S52°W, 6.13 feet; 14" W. Pine N27°W, 16.98 feet; 12" R. Pine S83°E, 14.76 feet. Remonumented corner with an Oneida County capped 2" dia. x 30" long aluminum monument 28 inches in the ground. Made new bearing tree: 10" R. Oak N59°E, 42.69 feet.

Note: Bearing tree tie distances measured to an aluminum nail set in center of root crown.

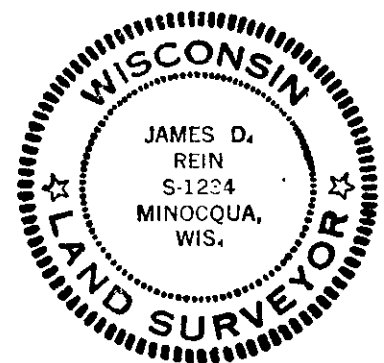
(c) (d) (e) Plan view of corner with ties to at least 4 witness monuments. If in disagreement with previously established corner, show the distances between the two corners and also indicate the ties to the disputed corner.



Note: Placed a deep one magnet in base of aluminum corner monument.

(i) I, James D. Rein, Registered Land Surveyor No. S-1234
 (type or print name) certify that the corner location on this record was determined by me or under my direction and control and that this U.S. Public Land Survey Monument Record is correct and complete to the best of my knowledge and belief.

James D. Rein Signature
 March 23rd, 1987 Date



Index No. Z-15

3606340020

U.S. PUBLIC LAND SURVEY MONUMENT RECORD

Note: This form is intended and designed to fulfill all requirements of Wisconsin Administrative Code, Chapter A-E 5.02, U.S. Public Land Survey Monument Record (3)(a)(b)(c)(d)(e)(f)(g)(h)(i). An additional sheet may be added if necessary to conform with said requirements.

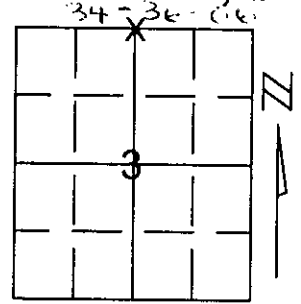
(a) Corner location: Township 35 North

Range 6 East

Town/City/Village BRADLEY

County LINCOLN

COPY FROM
ONEIDA COUNTY



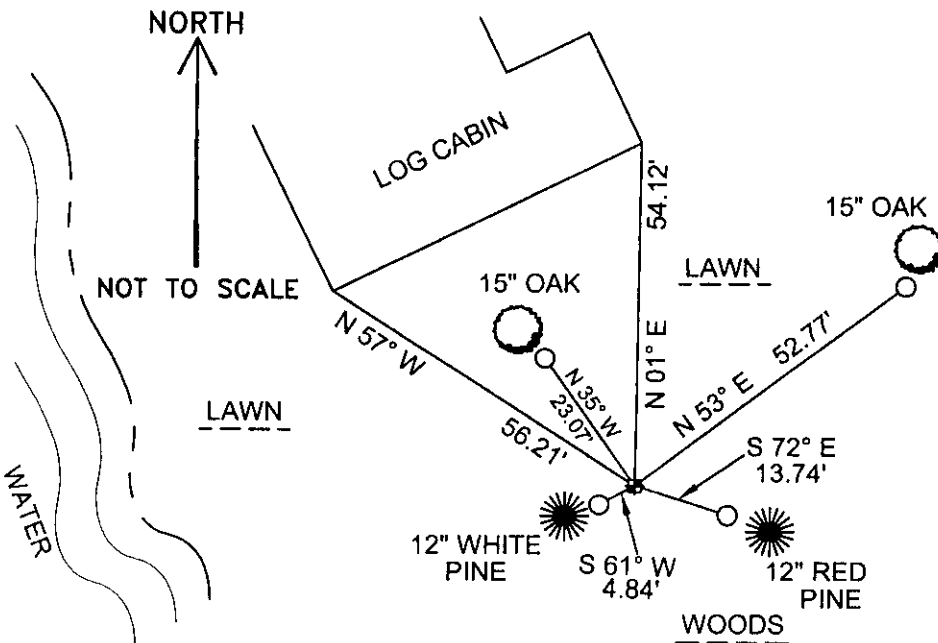
Section 3

(b)(f)(g)(h) Description of monument found at this corner and if it was accepted, state all evidence (material, testimonial, occupational, plats, records, other monuments) used as a basis for accepting. If not accepted or if nothing was found, state evidence used as basis for establishing location. If reestablished through lost corner proportionate methods, indicate all monuments, distances and directions used to establish.

FOUND 2" x 30" ALUMINUM ONEIDA COUNTY MONUMENT WITH TWO BLAZED BEARING TREES SET BY JAMES REIN IN 1987. ACCEPTED MONUMENT LOCATION AND RE-TIED TO PERPETUATE CORNER LOCATION.

RECEIVED AT LINCOLN COUNTY
COURTHOUSE THIS 21ST DAY
OF December 20 01
Tony Walker
LAND INFORMATION OFFICE

(c)(d)(e) Plan view of corner with ties to at least 4 witness monuments. If in disagreement with previously established corner, show the distances between the two corners and also indicate the ties to the disputed corner.



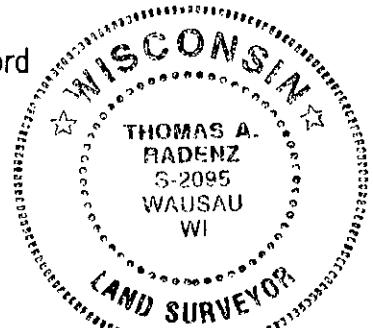
COORDINATES ARE REFERENCED TO THE LINCOLN COUNTY COORDINATE SYSTEM AS DEVELOPED BY THE WISCONSIN DEPARTMENT OF TRANSPORTATION AND WERE DETERMINED BY GPS OBSERVATIONS ON CONTROL POINTS AS SUPPLIED BY LINCOLN COUNTY.

BEARINGS ARE REFERENCED TO MAGNETIC NORTH.

- - SET 3/4" x 30" REBAR W/ ALUM CAP 1' FROM BEARING TREE
- ⊕ - NORTH 1/4 FOUND 2" x 30" ONEIDA COUNTY ALUMINUM MONUMENT

(i) I, Thomas A. Radenz, RLS certify that the corner location on this record was determined by me or under my direction and control and that this U.S. Public Land Survey Monument Record is correct and complete to the best of my knowledge and belief.

Thomas A. Radenz
Signature Date 12/18/01



Index No. 2-15-3000

3006340020