

Stock No. 26273

# U. S. PUBLIC LAND SURVEY MONUMENT RECORD

**INSTRUCTIONS :**

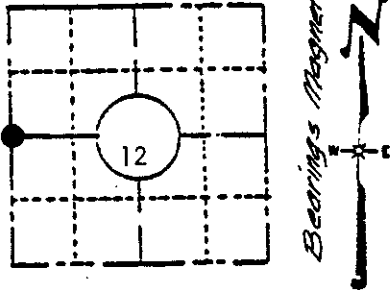
This record shall show the location of the corner and shall include all of the following nine elements (a through i).

- (a) Identify the corner by reference to the U.S. public land survey system.

Nov. 19, 1862- Joseph H. Jenkins, Deputy Surveyor  
 Set 1/4 Section post. - Original bearing trees:  
 White Pine 16" N85°E, 33 links (21.78 feet)  
 White Pine 7" N11°W, 31 links (20.46 feet)  
 Nov. 29th, 1892- B. F. Dorr, Oneida County Surveyor  
 Record of partial section subdivision refers to corner with no monument description.

July 19th, 1937- V. M. Maine, Oneida County Surveyor  
 Found old scribed 1/4 stake. Set official corner.  
 Marked bearing trees:  
 Black Oak 3", S39°E, .38-1/2 chains (25.41 feet)  
 Black Oak 4", N84°E, .17 chains (11.22 feet)

WEST QUARTER CORNER  
 Section 12 - T36N - R7E



**LOCATION SKETCH**

(Location of landmark indicated by "●")

- (b) Describe any record evidence, monument evidence, occupational evidence, testimonial evidence or any other material evidence you considered, and whether the monument was found or placed.

Found a 2" diameter galvanized iron pipe up 24 inches with a brass cap marked to identify corner. Maines bearing trees:

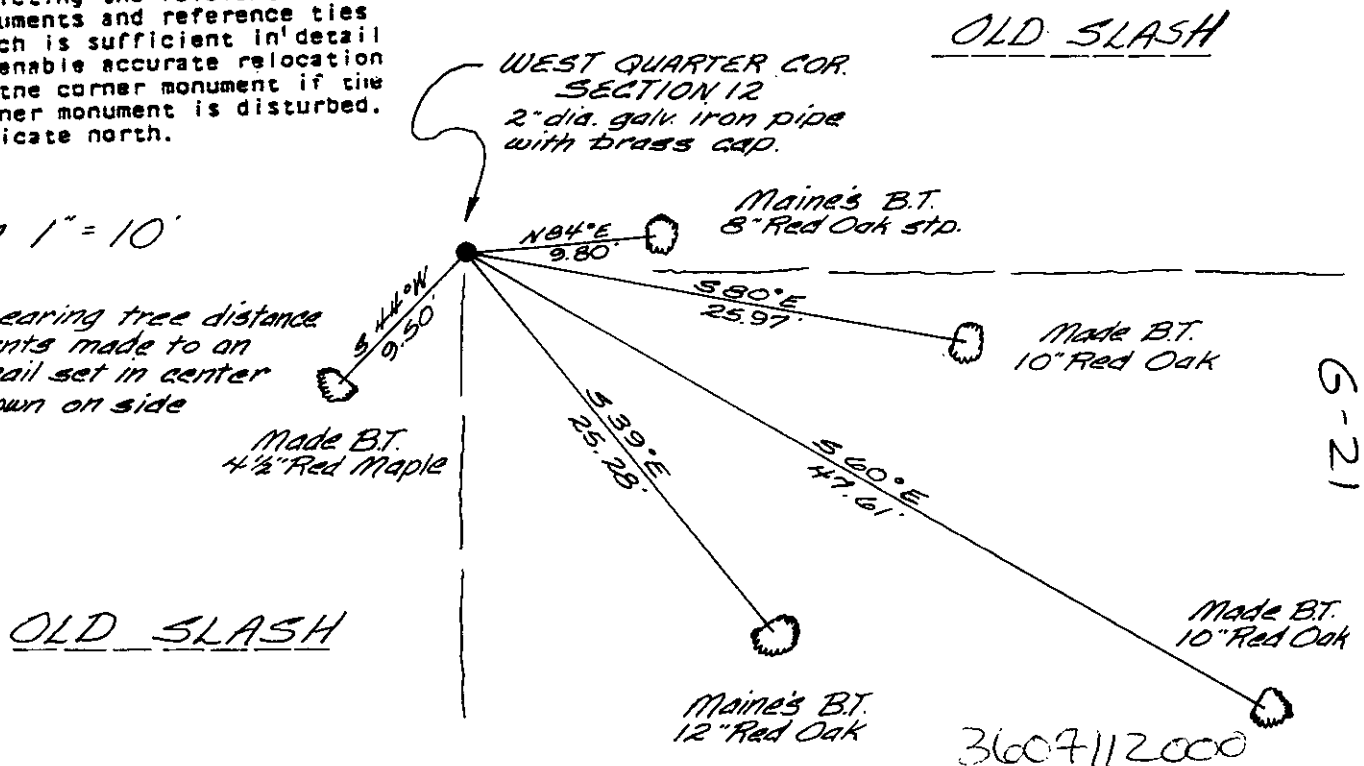
- 8" Red Oak stump in clump, N84°E, 9.80 feet
- 12" Red Oak S39°E, 25.28 feet.

- (c) In the plan view drawing below, provide reference ties to at least 4 witness monuments, or, if the location is within a municipality, to at least 2 witness monuments. (Witness monuments shall be made of concrete, natural stone, iron or other equally durable material, except wood.) Describe witness monuments.

- (d) Show a plan view drawing depicting the relevant monuments and reference ties which is sufficient in detail to enable accurate relocation of the corner monument if the corner monument is disturbed. Indicate north.

Scale 1" = 10'

NOTE: Bearing tree distance measurements made to an aluminum nail set in center of root crown on side of tree.



G-21

(e) Describe any material discrepancy between the location of the corner as restored or reestablished and the location of that corner as previously restored or reestablished by distance and direction. Show the discrepancy on the plan view drawing under (c), above. Show the distances between the corner as previously restored or reestablished and (1) the corner as restored or reestablished, and (2) to at least 2 of the witness monuments shown on the drawing in (d), above.

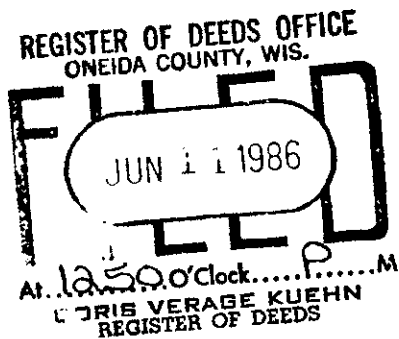
NONE

(f) Was the corner restored through acceptance of (1) an obliterated evidence location, or, (2) a found perpetuated location?

THE CORNER WAS RESTORED THROUGH ACCEPTANCE OF A FOUND PERPETUATED LOCATION.

(g&h) Was the corner reestablished through lost corner proportionate methods? If so, show the method, including the directions and distances to other public land survey corners used as evidence or used for proportioning in determining the corner location?

NO.



(1) I, JAMES D. REIN, Reg. Land Surveyor No. S-1234  
(type or print name) certify that the corner location shown on this record was determined by me or under my direction and control and that this U.S. Public Land Survey Monument Record is correct and complete to the best of my knowledge and belief.

James D Rein  
Signature

August 31st, 1983  
Date

