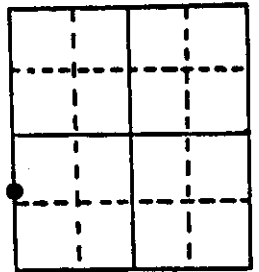


# U.S. PUBLIC LAND SURVEY MONUMENT RECORD

Note: This form is intended and designed to fulfill all requirements of Wisconsin Administrative Code, Chapter A-E 5.02, U.S. Public Land Survey Monument Record (3) (a) (b) (c) (d) (e) (f) (g) (h) (i). An additional sheet may be added if necessary to conform with said requirements.

(a) Corner location: Township 36 North  
 Range 8 East/West  
 Town/City/Village Crescent  
 County Oneida

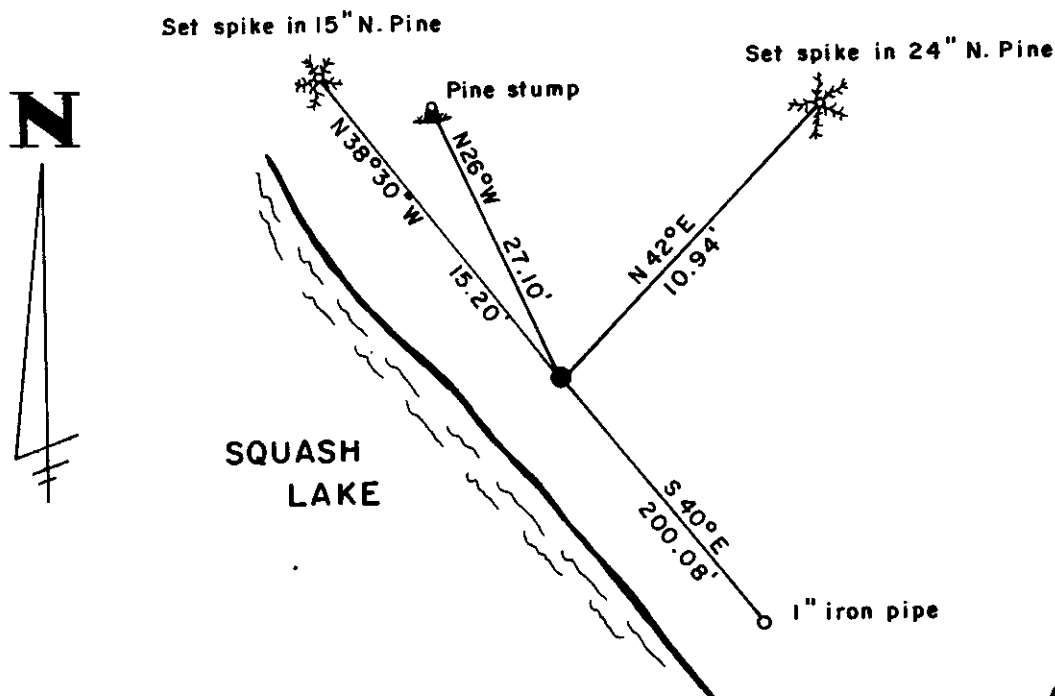


Section 18

(b) (f) (g) (h) Description of monument found at this corner and if it was accepted, state all evidence (material, testimonial, occupational, plats, records, other monuments) used as a basis for accepting. If not accepted or if nothing was found, state evidence used as basis for establishing location. If reestablished through lost corner proportionate methods, indicate all monuments, distances and directions used to establish.

Original corner by Alfred Millard in 1860. North between 13 & 18 20.77 over lake. W. Pine for meander corner. BT's Y Pine 9" N50E 15 lks; Y Pine 9" N26W 41 lks. GLO Found stump of meander corner tree, one live BT & one stump in 1942. They set a 2" iron pipe with brass cap & made one new BT. N. Pine 15" N38 $\frac{1}{2}$ W 23 lks. I found a 2" brass capped iron pipe, the live pine BT, the pine stump and GLO's BT. Made references as shown below.

(c) (d) (e) Plan view of corner with ties to at least 4 witness monuments. If in disagreement with previously established corner, show the distances between the two corners and also indicate the ties to the disputed corner.



(i) I, William E. Bandow  
 (type or print name) certify that the corner location on this record was determined by me or under my direction and control and that this U.S. Public Land Survey Monument Record is correct and complete to the best of my knowledge and belief.

William E. Bandow 3-11-85  
 Signature Date



Index No. M-1

3607/31100