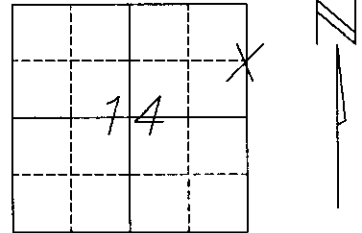


# U.S. PUBLIC LAND SURVEY MONUMENT RECORD

NOTE: This form is intended and designed to fulfill all requirements of Wisconsin Administrative Code, Chapter A-E 7.08 U.S. Public Land Survey Monument Record (3) (a)(b)(c)(d)(e)(f)(g)(h)(i). An additional sheet may be added if necessary to conform with said requirements.

(a) Corner location: Township 36 North  
 Range 7 East/West  
 Town/City/Village WOODBORO  
 County ONEIDA

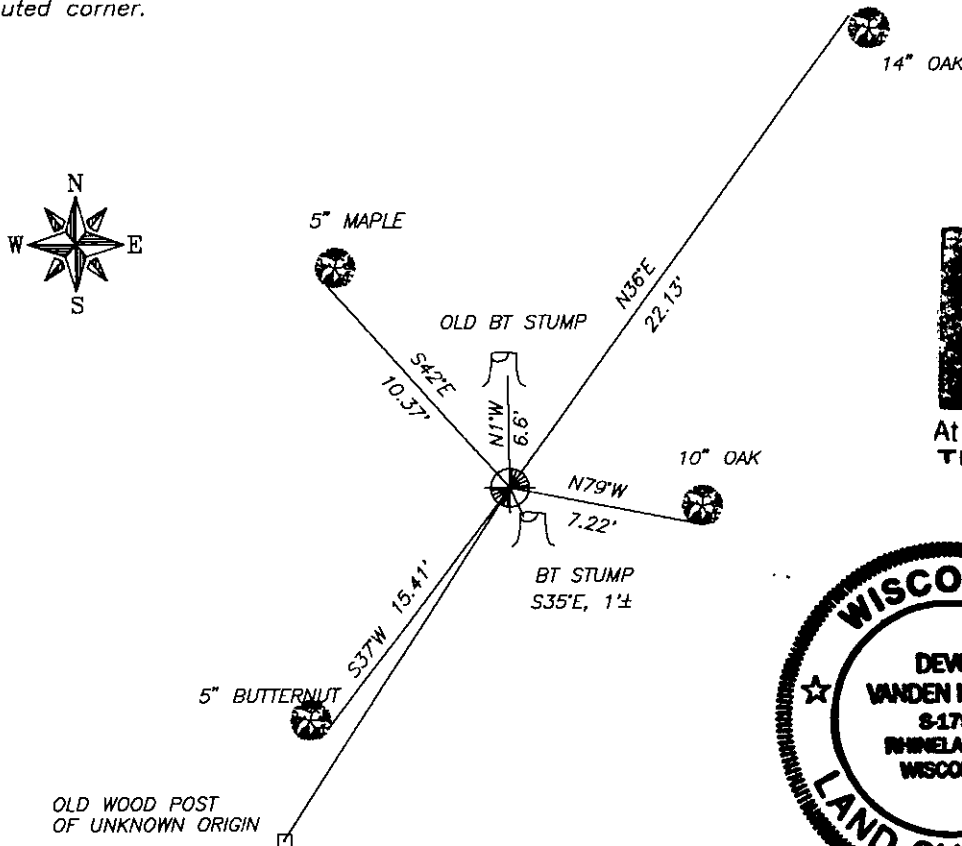


Section 14

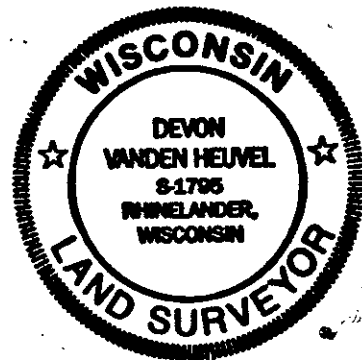
(b)(f)(g)(h) Description of monument found at this corner and if it was accepted, state all evidence (material, testimonial, occupational, plats, records, other monuments) used as a basis for accepting. If not accepted or if nothing was found, state evidence used as basis for establishing location. If reestablished through lost corner proportionate methods, indicate all monuments, distances and directions used to establish. Indicate type of monument found or set and sign post.

THIS CORNER WAS ORIGINALLY ESTABLISHED IN JULY OF 1910 BY VAUGHN, AT WHICH TIME HE SET A WOOD STAKE AND MADE A WITNESS TO A 28" W. PINE STUMP-N1°W-10 LINKS, THERE WAS NO OTHER AVAILABLE TIES NEARBY. IN AUGUST OF 1910 MAINE FOUND A WOOD STAKE AT THE LOCATION AND THE PINE STUMP. MAINE RESET A OAK STAKE AND MADE A NEW WITNESS AS FOLLOWS: 3" BL. OAK-S35°E-1.5 LINKS. I RESET THE CORNER AT A POINT EQUIDISTANT BETWEEN THE E 1/4 CORNER AND THE NORTHEAST CORNER OF THE SECTION. THIS LOCATION FIT WELL WITH VARIOUS CALLS FROM THE NOTES OF MAINE. I FOUND WHAT I BELIEVE ARE THE REMAINS OF THE PINE STUMP SET BY VAUGHN. I ALSO FOUND AN OAK STUMP WHICH FITS THE LOCATION OF THE WITNESS MADE BY MAINE. THERE WAS ALSO A CALL IN MAINE'S NOTES FOR A SLEIGH ROAD 1.23 CHAINS SOUTH OF THE CORNER. I ALSO FOUND THE REMAINS OF THIS SLEIGH ROAD AT THAT DISTANCE SOUTH FROM MY LOCATION. THERE WAS AN OLD WOOD POST AND IRON PIPE SOUTHWEST OF MY LOCATION THAT DID NOT FIT ANY OF THE OLD INFORMATION. THEREFORE I SET AN ONEIDA COUNTY MONUMENT AT MY CORNER LOCATION AND MADE NEW WITNESSES.

(c)(d)(e) Plan view of corner with ties to at least 4 witness monuments. If in disagreement with previously established corner, show the distances between the two corners and also indicate the ties to the disputed corner.



REGISTER OF DEEDS OFFICE  
 ONEIDA COUNTY, WIS.  
**FILED**  
 OCT 28 1993  
 At 8:00 O'Clock a M  
 THOMAS H. LEIGHTON  
 REGISTER OF DEEDS



(i) DEVON VANDEN HEUVEL  
 (type or print name) certify that the corner location of this record was determined by me or under my direction and control and that this U.S. Public Land Survey Monument Record is correct and complete to the best of my knowledge and belief.

Devon Vanden Heuvel 9-20-93  
 Signature Date

Stamp

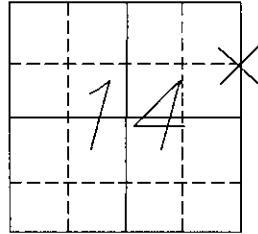
Index No. K-21

3607143000

# U.S. PUBLIC LAND SURVEY MONUMENT RECORD

NOTE: This form is intended and designed to fulfill all requirements of Wisconsin Administrative Code, Chapter A-E 7.08 U.S. Public Land Survey Monument Record (3) (a-i). An additional sheet may be added if necessary to conform with said requirements.

(a) Corner location: Township 36 North  
 Range 7 East/West  
 Town/City/Village WOODBORO  
 County ONEIDA

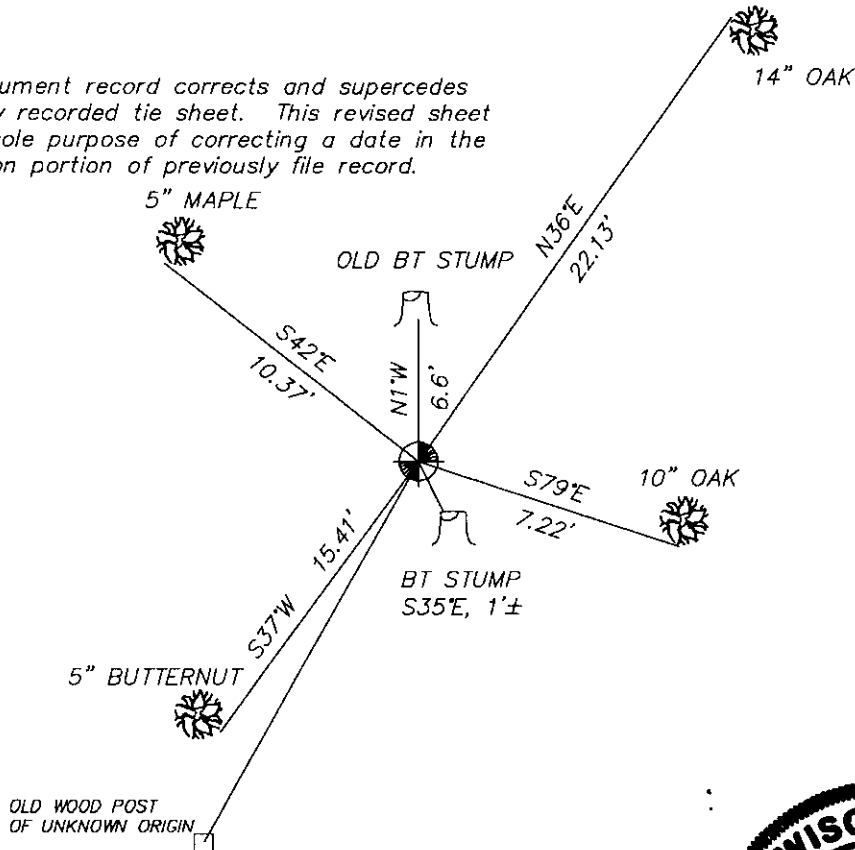


(b)(f)(g)(h) Description of monument found at this corner and if it was accepted, state all evidence (material, testimonial, occupational, plats, records, other monuments) used as a basis for accepting. If not accepted or if nothing was found, state evidence used as basis for establishing location. If reestablished through lost corner proportionate methods, indicate all monuments, distances and directions used to establish. Indicate type of monument found or set and sign post.

THIS CORNER WAS ORIGINALLY ESTABLISHED IN JULY OF 1910 BY VAUGHN, AT WHICH TIME HE SET A WOOD STAKE AND MADE A WITNESS TO A 28" w. PINE STUMP-N1°W-10 LINKS, THERE WAS NO OTHER AVAILABLE TIES NEARBY. IN JULY OF 1937 MAINE FOUND A WOOD STAKE AT THE LOCATION AND THE PINE STUMP. MAINE RESET A OAK STAKE AND MADE A NEW WITNESS AS FOLLOWS: 3" BL. OAK-S35°E-1.5 LINKS. I RESET THE CORNER AT A POINT EQUIDISTANT BETWEEN THE E 1/4 CORNER AND THE NORTHEAST CORNER OF THE SECTION. THIS LOCATION FIT WELL WITH VARIOUS CALLS FROM THE NOTES OF MAINE. I FOUND WHAT I BELIEVE ARE THE REMAINS OF THE PINE STUMP SET BY VAUGHN. I ALSO FOUND AN OAK STUMP THAT FITS THE LOCATION OF THE WITNESS MADE BY MAINE. THERE WAS ALSO A CALL IN MAINE'S NOTES FOR A SLEIGH ROAD 1.23 CHAINS SOUTH OF THE CORNER. I ALSO FOUND THE REMAINS OF THIS SLEIGH ROAD AT THAT DISTANCE SOUTH OF MY LOCATION. THERE WAS AN OLD WOOD POST AND AN IRON PIPE SOUTHWEST OF MY LOCATION THAT DID NOT FIT ANY OF THE OLD INFORMATION. THEREFORE I SET AN ONEIDA COUNTY MONUMENT AT MY CORNER LOCATION AND MADE NEW WITNESS'S.

(c)(d)(e) Plan view of corner with ties to at least 4 witness monuments. If in disagreement with previously established corner, show the distances between the two corners and also indicate the ties to the disputed corner.

NOTE: this monument record corrects and supercedes previously recorded tie sheet. This revised sheet for the sole purpose of correcting a date in the description portion of previously file record.



(i) I, DEVON VANDEN HEUVEL  
 (type or print name) certify that the corner location of this record was determined by me or under my direction and control and that this U.S. Public Land Survey Monument Record is correct and complete to the best of my knowledge and belief.

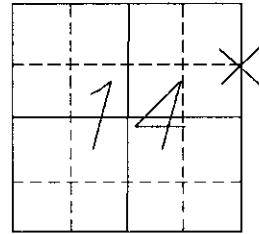
Devon Vanden Heuvel 8-29-94  
 Signature Date

Index No. K-21

# U.S. PUBLIC LAND SURVEY MONUMENT RECORD

NOTE: This form is intended and designed to fulfill all requirements of Wisconsin Administrative Code, Chapter A-E 7.08 U.S. Public Land Survey Monument Record (3) (a-i). An additional sheet may be added if necessary to conform with said requirements.

(a) Corner location: Township 36 North  
 Range 7 East/West  
 Town/City/Village WOODBORO  
 County ONEIDA

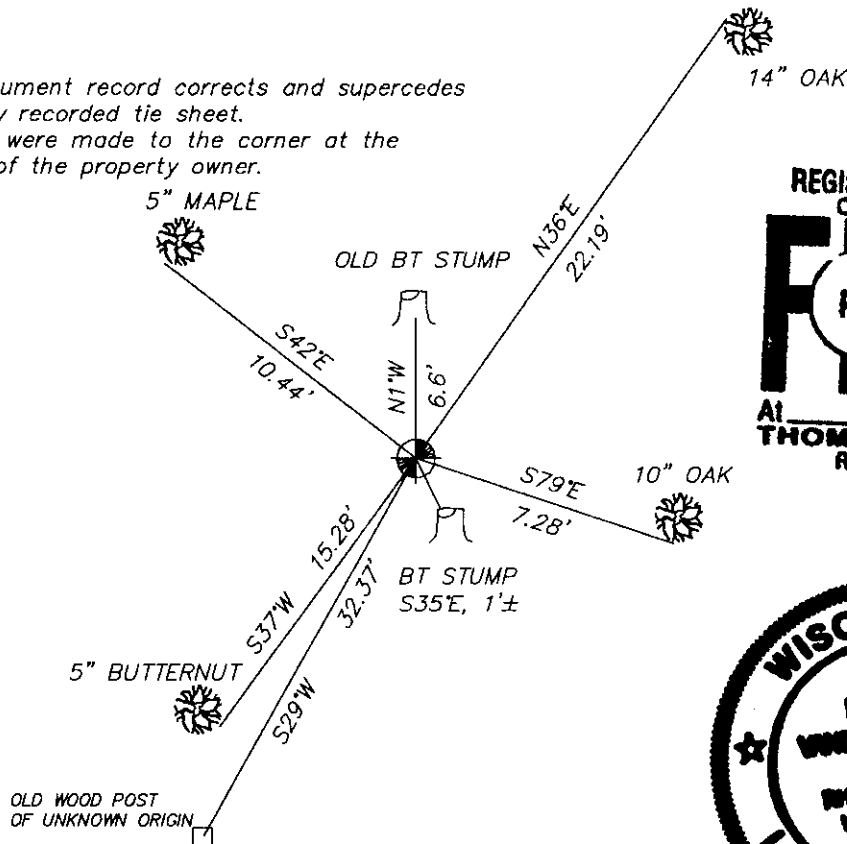


(b)(f)(g)(h) Description of monument found at this corner and if it was accepted, state all evidence (material, testimonial, occupational, plats, records, other monuments) used as a basis for accepting. If not accepted or if nothing was found, state evidence used as basis for establishing location. If reestablished through lost corner proportionate methods, indicate all monuments, distances and directions used to establish. Indicate type of monument found or set and sign post.

THIS CORNER WAS ORIGINALLY ESTABLISHED IN JULY OF 1910 BY VAUGHN, AT WHICH TIME HE SET A WOOD STAKE AND MADE A WITNESS TO A 28" w. PINE STUMP-N1°W-10 LINKS, THERE WAS NO OTHER AVAILABLE TIES NEARBY. IN JULY OF 1937 MAINE FOUND A WOOD STAKE AT THE LOCATION AND THE PINE STUMP. MAINE RESET A OAK STAKE AND MADE A NEW WITNESS AS FOLLOWS: 3" BL. OAK-S35°E-1.5 LINKS. I RESET THE CORNER AT A POINT EQUIDISTANT BETWEEN THE E 1/4 CORNER AND THE NORTHEAST CORNER OF THE SECTION. THIS LOCATION FIT WELL WITH VARIOUS CALLS FROM THE NOTES OF MAINE. I FOUND WHAT I BELIEVE ARE THE REMAINS OF THE PINE STUMP SET BY VAUGHN. I ALSO FOUND AN OAK STUMP THAT FITS THE LOCATION OF THE WITNESS MADE BY MAINE. THERE WAS ALSO A CALL IN MAINE'S NOTES FOR A SLEIGH ROAD 1.23 CHAINS SOUTH OF THE CORNER. I ALSO FOUND THE REMAINS OF THIS SLEIGH ROAD AT THAT DISTANCE SOUTH OF MY LOCATION. THERE WAS AN OLD WOOD POST AND AN IRON PIPE SOUTHWEST OF MY LOCATION THAT DID NOT FIT ANY OF THE OLD INFORMATION. THEREFORE I SET AN ONEIDA COUNTY MONUMENT AT MY CORNER LOCATION AND MADE NEW WITNESS'S.

(c)(d)(e) Plan view of corner with ties to at least 4 witness monuments. If in disagreement with previously established corner, show the distances between the two corners and also indicate the ties to the disputed corner.

NOTE: this monument record corrects and supercedes previously recorded tie sheet. new ties were made to the corner at the request of the property owner.



REGISTER OF DEEDS OFFICE  
 ONEIDA COUNTY, WIS.  
**FILED**  
 FEB - 8 1996  
 At O'Clock M  
**THOMAS H. LEIGHTON**  
 REGISTER OF DEEDS



(i) DEVON WARDEN HEVEL  
 (type or print name) certify that the corner location of this record was determined by me or under my direction and control and that this U.S. Public Land Survey Monument Record is correct and complete to the best of my knowledge and belief.

Devon Warden Hevel  
 Signature

2-7-96  
 Date

Index No. K-21

3607143000