

CERTIFIED LAND CORNER RESTORATION

State of Wisconsin }  
 County of ONEIDA } ss.

I, Herbert Moore, do hereby certify that on the tenth day of October, 1975, I found evidence of the east quarter corner corner of Sec. 16 Township 36 North, Range 7 East, Fourth Principal Meridian, as described hereon; and that from this evidence I established a new monument and accessories as described hereon to perpetuate the original location of this corner:

Description of original monument and accessories and subsequent restorations:

The original monument for the east quarter corner of Sec. 16 has been reported to be in a location north of Trout Creek and it seems to be incorrect as there is no evidence of witness trees reported in that location. The incorrect corner has not been removed.

Wood Hub Sta. 44+55.70

158°-47'

Wood Hub Sta. 40+80.10

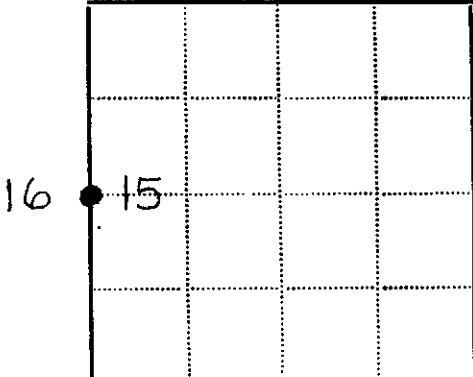
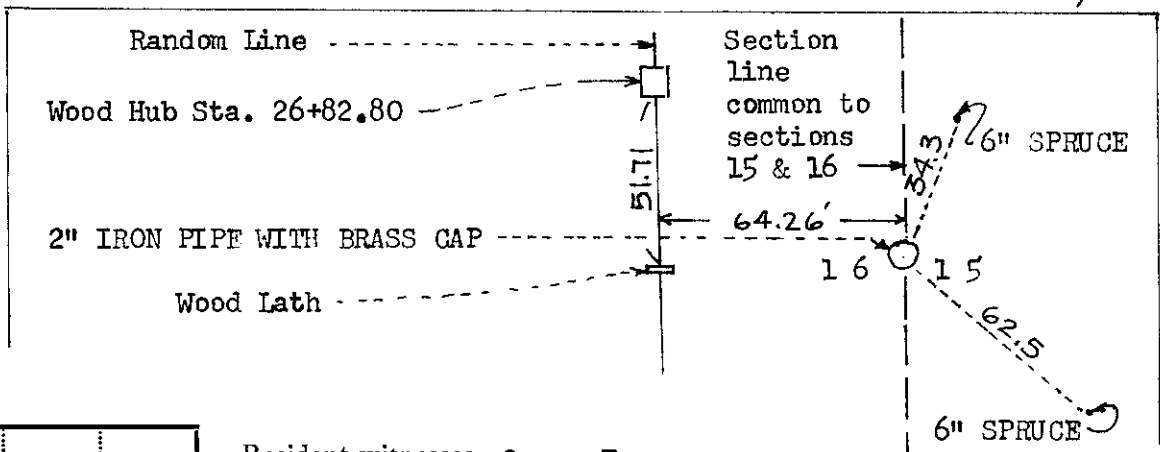
North edge of swamp wood hub Sta. 37+13.75

Description of corner evidence found:

A traverse was run from the SE corner of Sec. 16 to the NE corner of the section, and the quarter corner established as indicated on the plat of survey shown on this sheet

Enter swamp Sta. 28+95.00

Description of monument and accessories I established to perpetuate the location of this corner:



Resident witnesses Oscar Egger

Dated at Rhineland Wisconsin, this 11 day of October 1975

Signature Herbert Moore County Surveyor

(County Surveyor, Registered Land Surveyor, or other duly authorized official)

Surveyors Registration No. 407

Office of REGISTER OF DEEDS County of ONEIDA

I hereby certify that the within instrument was filed in this office for record on the 15th day of October 1975, and was filed in Book No. 1 Page No. 16 of County Records.

Signature Doris Verage Kuehn Title Register of Deeds

Township 36 N, Range 7 East, Section 16, Index No. 3607162000, Page No. 21

2" IRON PIPE WITH BRASS CAP

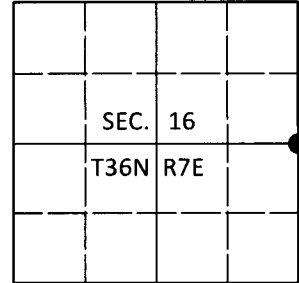
L-13

# U.S. PUBLIC LAND SURVEY MONUMENT RECORD

Note: This form is intended and designed to fulfill all requirements of Wisconsin Administrative Code, Chapter A-E 7.08 U.S. Public Land Survey Monument Record (3)(a-i).

(a) CORNER LOCATION  
 1/4 Cor. of Secs. 15 & 16  
 Township 36 North  
 Range 7 East of the 4th P.M.  
 Town of Woodboro  
 County of Oneida

WISCRS - Oneida County  
 N: 153,599.06 USft  
 E: 213,130.34 USft  
 Datum: NAD 83(2011)  
 GNSS Method: RTN - Direct  
 GNSS Control: WISCRS VRS



(b) HISTORY OF ORIGINAL CORNER ESTABLISHMENT

Original Surveyor: \_\_\_\_\_ Original Accessories: \_\_\_\_\_  
 Date of Survey Commenced: \_\_\_\_\_ See previous monument record(s)  
 Completed: \_\_\_\_\_

(b)(f)(g)(h) Description of monument found at this corner and if it was accepted, state all evidence (material, testimonial, occupational, plats, records, other monuments) used as a basis for accepting. If not accepted or if nothing was found, state evidence used as basis for establishing location. If re-established through lost corner proportionate methods, indicate all monuments, distances and directions used to establish. Indicate type of monument and sign post found or set.

*This is a perpetuation of the following monument record(s) that comprise a complete history of the corner:*

*Oct. 14, 1975: Certified Land Corner Restoration No. 3607162000 by Herbert Moore, PLS*

*May 9, 2020: I found and accepted the record monument, a 2.4" diam. iron pipe with a 2.4" diam. brass cap projecting 18" above the bog surface. The NE record bearing tree is gone. I found or established accessories as shown below. I set a white vinyl sign post bearing Southwest, 0.8 ft.*

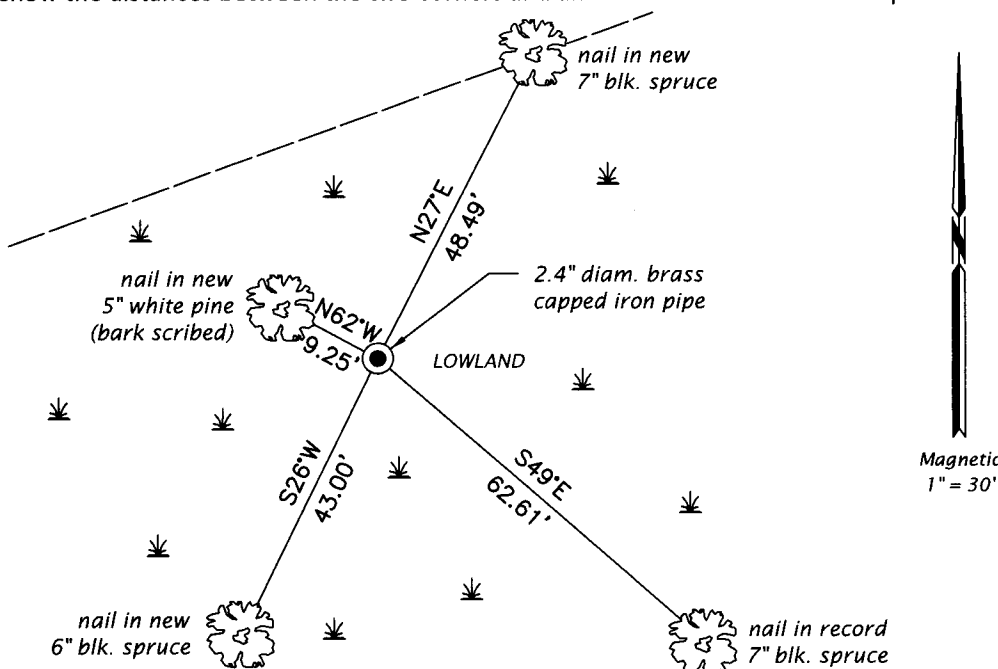
*The coordinate value shown has been verified by at least one of the following methods: 1) comparison to a previously GPS determined published value; 2) the value is the average of two or more GPS observations at a markedly different time; 3) one or more distances were measured back to the GPS observed corner from temporary GPS observed offset locations.*

REGISTER OF DEEDS OFFICE  
 ONEIDA COUNTY  
 FILED

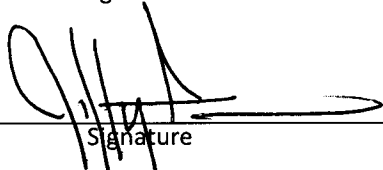
JUN 26 2020

KYLE J. FRANSON  
 REGISTER OF DEEDS

(c)(d)(e) Plan view of corner with ties to at least 4 witness monuments. If in disagreement with previously established corner, show the distances between the two corners and also indicate the ties to the disputed.



(i) I, Jeffrey W. Austin, Professional Land Surveyor No. S-1885, hereby certify that the corner location on this record was determined by me or under my direction and control and that this U.S. Public Land Survey Monument Record is correct and complete to the best of my knowledge and belief.

  
 Signature

JUN 5, 2020  
 Date