

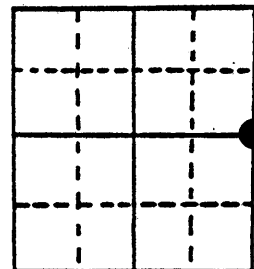
# U.S. PUBLIC LAND SURVEY MONUMENT RECORD

**Note:** This form is intended and designed to fulfill all requirements of Wisconsin Administrative Code, Chapter A-E 7.08 U.S. Public Land Survey Monument Record (3) (a) (b) (c) (d) (e) (f) (g) (h) (i). An additional sheet may be added if necessary to conform with said requirements.

(a) Corner location: Township 36 North  
 Range 7 East/West

Town/City/Village Woodboro

County Oneida



Section 19

(b) (f) (g) (h) Description of monument found at this corner and if it was accepted, state all evidence (material, testimonial, occupational, plats, records, other monuments) used as a basis for accepting. If not accepted or if nothing was found, state evidence used as basis for establishing location. If reestablished through lost corner proportionate methods, indicate all monuments, distances and directions used to establish. Indicate type of monument found or set and sign post.

Nov. 1862 - Joseph H. Jenkins established this corner and set a wood post with 2 BTs:  
 8" Tamarack, N77°W, 29 Links      6" Tamarack, S74°E, 14 Links

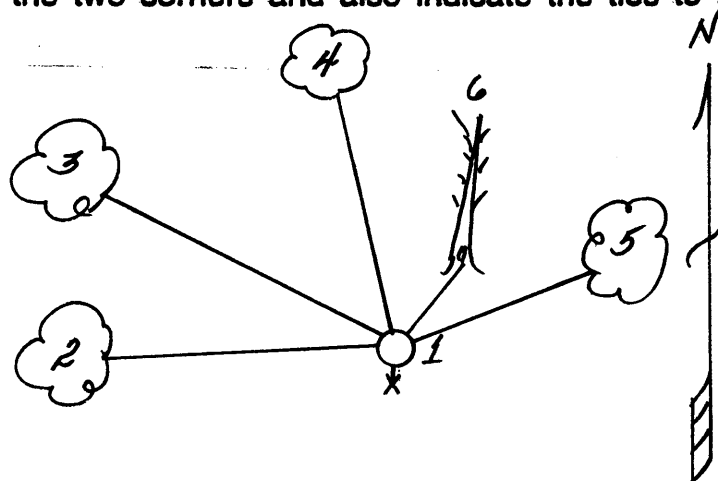
9/21/1937 - Maine found point of original post and both original BTs with marks plain.  
 He made 2 new BTs and set a 2" x 60" iron pipe with brass cap:  
 4" Spruce, S14°E, 12 Links      4" Spruce, N43°E, 6.6 Links

2/27/1990 - Milo E. Stefan found Maine's monument and Northeast Spruce BT - dead.  
 Made 4 new BTs and set plastic sign post.

(c) (d) (e) Plan view of corner with ties to at least 4 witness monuments. If in disagreement with previously established corner, show the distances between the two corners and also indicate the ties to the disputed corner.

- 1) 2" x 60" Iron pipe with brass cap
- 2) 8" Tamarack, S88°W, 39.75'
- 3) 6" Tamarack, N69°W, 35.30'
- 4) 6" Tamarack, N8°W, 38.60'
- 5) 6" Tamarack, N73°E, 15.42'
- 6) 6" Spruce (dead), N43°E, 4.4' (Maines)
- 7) Plastic sign post next to monument

Distances to nail in side of BT.  
 BTs scribed "BT" in stump blaze.



(i) I, Milo E. Stefan  
 (type or print name) certify that the corner location on this record was determined by me or under my direction and control and that this U.S. Public Land Survey Monument Record is correct and complete to the best of my knowledge and belief.

Milo E. Stefan      2/28/90  
 Signature      Date



3607192000  
 Stamp

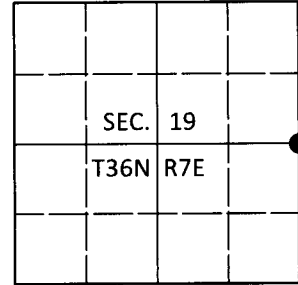
Index No. P-5

# U.S. PUBLIC LAND SURVEY MONUMENT RECORD

Note: This form is intended and designed to fulfill all requirements of Wisconsin Administrative Code, Chapter A-E 7.08 U.S. Public Land Survey Monument Record (3)(a-i).

(a) CORNER LOCATION  
 1/4 Cor. of Secs. 19 & 20  
 Township 36 North  
 Range 7 East of the 4th P.M.  
 Town of Woodboro  
 County of Oneida

WISCORS - Oneida County  
 N: 147,934.88 USft  
 E: 202,619.69 USft  
 Datum: NAD 83(2011)  
 GNSS Method: RTN - Direct  
 GNSS Control: WISCORS VRS



(b) HISTORY OF ORIGINAL CORNER ESTABLISHMENT

Original Surveyor: \_\_\_\_\_ Original Accessories: \_\_\_\_\_  
 Date of Survey Commenced: \_\_\_\_\_ See previous monument record(s)  
 Completed: \_\_\_\_\_

(b)(f)(g)(h) Description of monument found at this corner and if it was accepted, state all evidence (material, testimonial, occupational, plats, records, other monuments) used as a basis for accepting. If not accepted or if nothing was found, state evidence used as basis for establishing location. If re-established through lost corner proportionate methods, indicate all monuments, distances and directions used to establish. Indicate type of monument and sign post found or set.

*This is a perpetuation of the following monument record(s) that comprise a complete history of the corner:*

*Feb. 28, 1990: USPLS Monument Record No. 3607192000 by Milo E. Stefan, PLS*

*May 9, 2020: I found and accepted the record monument, a 2.4" diam. iron pipe with a 2.4" diam. brass cap projecting 14" above the bog surface. The record bearing tree at S88°W is standing dead. I found or established accessories as shown below. I found a white vinyl sign post bearing Northwest, 0.6 ft.*

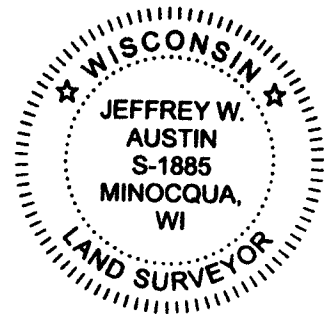
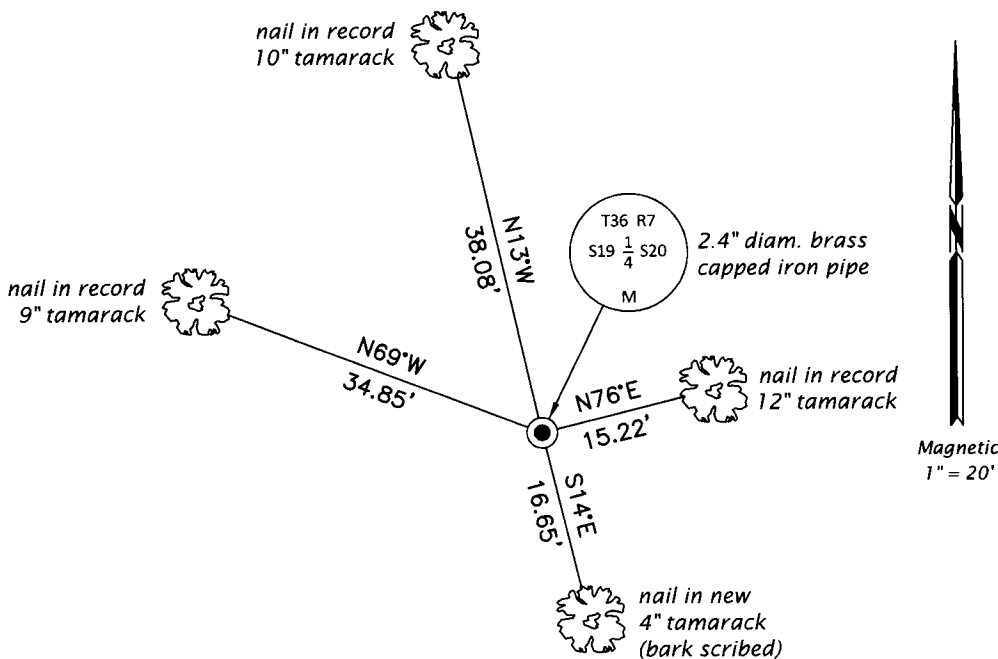
*The coordinate value shown has been verified by at least one of the following methods: 1) comparison to a previously GPS determined published value; 2) the value is the average of two or more GPS observations at a markedly different time; 3) one or more distances were measured back to the GPS observed corner from temporary GPS observed offset locations.*

REGISTER OF DEEDS OFFICE  
 ONEIDA COUNTY  
 FILED

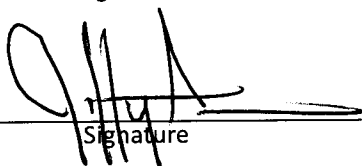
JUN 26 2020

KYLE J. FRANSON  
 REGISTER OF DEEDS

(c)(d)(e) Plan view of corner with ties to at least 4 witness monuments. If in disagreement with previously established corner, show the distances between the two corners and also indicate the ties to the disputed.



(i) I, Jeffrey W. Austin, Professional Land Surveyor No. S-1885, hereby certify that the corner location on this record was determined by me or under my direction and control and that this U.S. Public Land Survey Monument Record is correct and complete to the best of my knowledge and belief.

  
 Signature

JUNE 5, 2020  
 Date