

U.S. PUBLIC LAND SURVEY MONUMENT RECORD

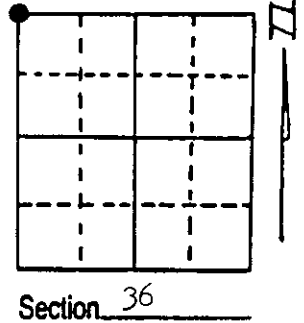
Note: This form is intended and designed to fulfill all requirements of Wisconsin Administrative Code, Chapter A-E 7.08 U.S. Public Land Survey Monument Record (3) (a) (b) (c) (d) (e) (f) (g) (h) (i). An additional sheet may be added if necessary to conform with said requirements.

(a) Corner location: Township 36 North
 Range 7 East/West

Town/City/Village WOODBORO

County ONEIDA

REGISTER OF DEEDS OFFICE
 ONEIDA COUNTY, WIS.
FILED
 DEC 12 1990
 At _____ O'Clock _____ M
THOMAS H. LEIGHTON
 REGISTER OF DEEDS

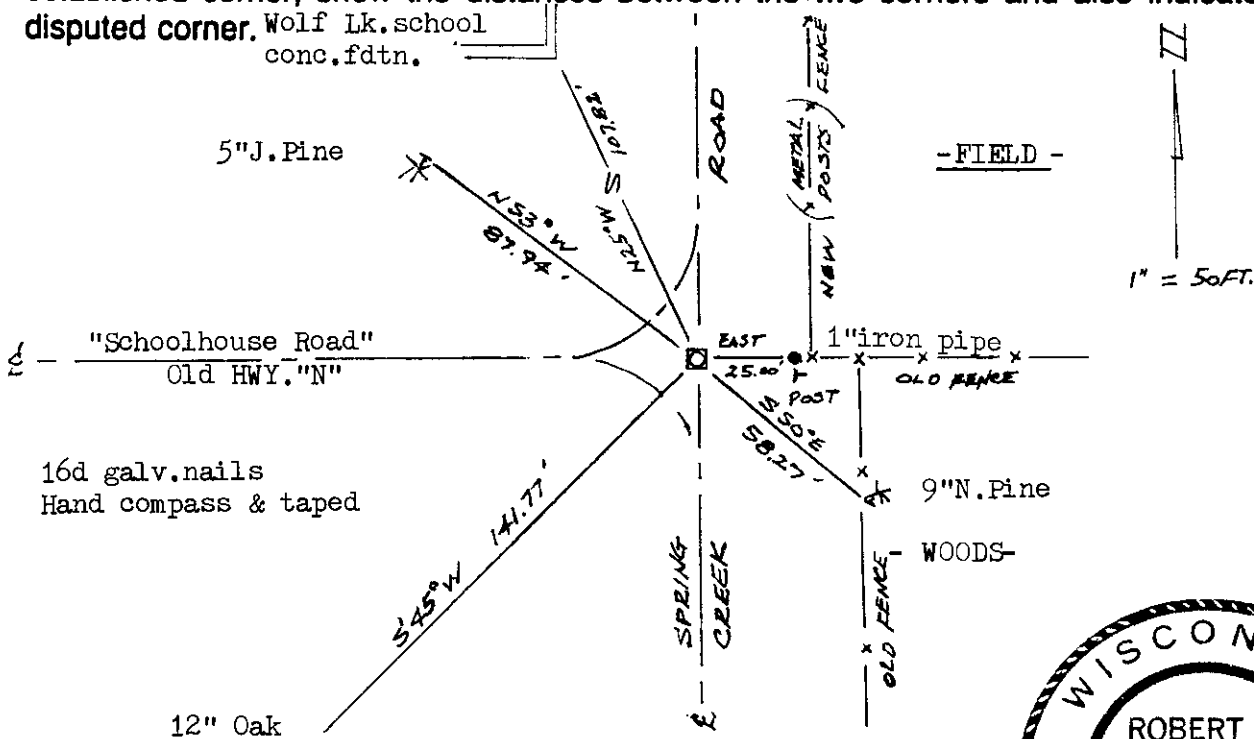


(b) (f) (g) (h) Description of monument found at this corner and if it was accepted, state all evidence (material, testimonial, occupational, plats, records, other monuments) used as a basis for accepting. If not accepted or if nothing was found, state evidence used as basis for establishing location. If reestablished through lost corner proportionate methods, indicate all monuments, distances and directions used to establish. Indicate type of monument found or set and sign post.

1862 Joseph J. Jenkins, Deputy Surveyor, North betwn. Sec., s 35&36, Var. 5°E, 80.00ch. set post...BT's Y.pine N76°W, 34lks., W.pine 15", N80°W, 13lks., W.pine 10", S23°E, 20lks., W.pine 12", S15°W, 29lks....timber pine and all dead. B.F.Dorr, OCS, @ corner in Oct. 1891; D.H.Vaughan, OCS, @ corner for road west & north in 1902...set new post; L.Schmit, rls, reset corner in 1978 survey in Section 26...set P.K.nail & 2"iron pipe @ road ixion; W.G.Immich, RLS, used P.K. in survey of Section 36 in 1978.

12 Oct. '90 found 2" iron pipe, replaced with W-1-B OCS alum. mont., "T" plastic post set 25' E. made BT's & ties as below. Corner by common report using the fence, East & road ixions. N, S&W.

(c) (d) (e) Plan view of corner with ties to at least 4 witness monuments. If in disagreement with previously established corner, show the distances between the two corners and also indicate the ties to the disputed corner.



(i) I, ROBERT H. WINAT, RLS-1040
 (type or print name) certify that the corner location on this record was determined by me or under my direction and control and that this U.S. Public Land Survey Monument Record is correct and complete to the best of my knowledge and belief.

Robert H. Winat

Signature

Date 12 Oct. '90



Index No. 1-21

Stamp

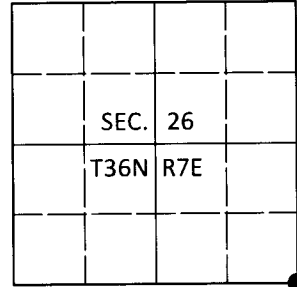
3607260000

U.S. PUBLIC LAND SURVEY MONUMENT RECORD

Note: This form is intended and designed to fulfill all requirements of Wisconsin Administrative Code, Chapter A-E 7.08 U.S. Public Land Survey Monument Record (3)(a-i).

(a) CORNER LOCATION
 Cor. of Secs. 25, 26, 35 & 36
 Township 36 North
 Range 7 East of the 4th P.M.
 Town of Woodboro
 County of Oneida

WISCRS - Oneida County
 N: 140,107.40 USft
 E: 223,603.63 USft
 Datum: NAD 83(2011)
 GNSS Method: RTN - Direct
 GNSS Control: WISCORS VRS



(b) HISTORY OF ORIGINAL CORNER ESTABLISHMENT

Original Surveyor:

Original Accessories:

Date of Survey Commenced:
 Completed:

See previous monument record(s)

(b)(f)(g)(h) Description of monument found at this corner and if it was accepted, state all evidence (material, testimonial, occupational, plats, records, other monuments) used as a basis for accepting. If not accepted or if nothing was found, state evidence used as basis for establishing location. If re-established through lost corner proportionate methods, indicate all monuments, distances and directions used to establish. Indicate type of monument and sign post found or set.

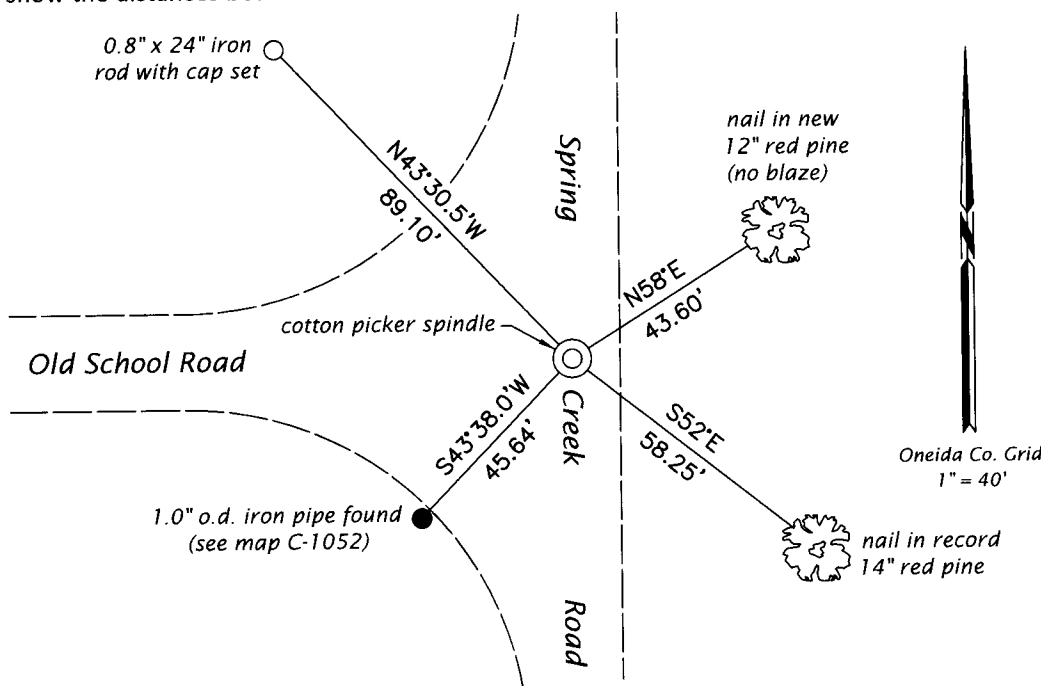
This is a perpetuation of the following monument record(s) that comprise a complete history of the corner:

Oct. 12, 1990: USPLS Monument Record No. 3607260000 by Robert H. Winat, PLS

Oct. 24, 2019: I found and accepted a perpetuation of the record monument, a PK nail in road centerlines bearing North, South and West. I set a cotton picker spindle in place of the PK nail. The record jack pine bearing tree is gone. The record oak bearing tree was not measured as it's over 100 feet from the corner and ornamental in nature. The record 1" iron pipe was found tipped by recent utility construction. I found or established accessories as shown below. I found a white vinyl sign post bearing East, 23 ft.

The coordinate value shown has been verified by at least one of the following methods: 1) comparison to a previously GPS determined published value; 2) the value is the average of two or more GPS observations at a markedly different time; 3) one or more distances were measured back to the GPS observed corner from temporary GPS observed offset locations.

(c)(d)(e) Plan view of corner with ties to at least 4 witness monuments. If in disagreement with previously established corner, show the distances between the two corners and also indicate the ties to the disputed.



REGISTER OF DEEDS OFFICE
 ONEIDA COUNTY
 FILED

DEC 23 2019

KYLE J. FRANSON
 REGISTER OF DEEDS

(i) I, Jeffrey W. Austin, Professional Land Surveyor No. S-1885, hereby certify that the corner location on this record was determined by me or under my direction and control and that this U.S. Public Land Survey Monument Record is correct and complete to the best of my knowledge and belief.

[Handwritten Signature]
 Signature

29 Nov 2019
 Date

3607260000 (INDEX NO. V-21)