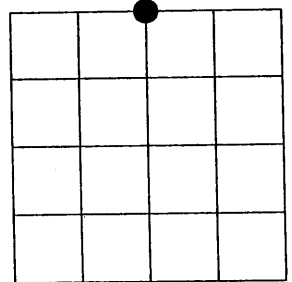
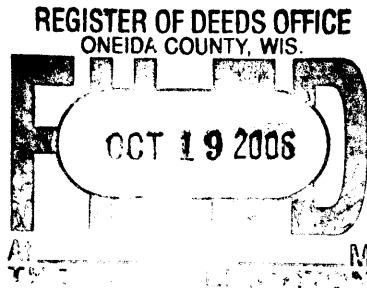


# U.S. PUBLIC LAND SURVEY MONUMENT RECORD

NOTE: This form is intended and designed to fulfill all requirements of Wisconsin Administrative Code, Chapter A-E 7.08 U.S. Public Land Survey Monument Record (S)(a)(b)(c)(d)(e)(f)(g)(h)(i). An additional sheet may be added if necessary to conform with said requirements.

(a) Corner location: Township 35 North  
 Range 07 East  
 Town of KING  
 LINCOLN County, Wisconsin

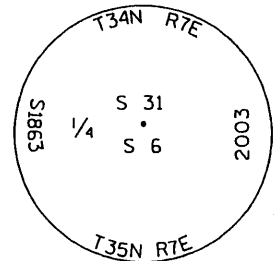


Section 6

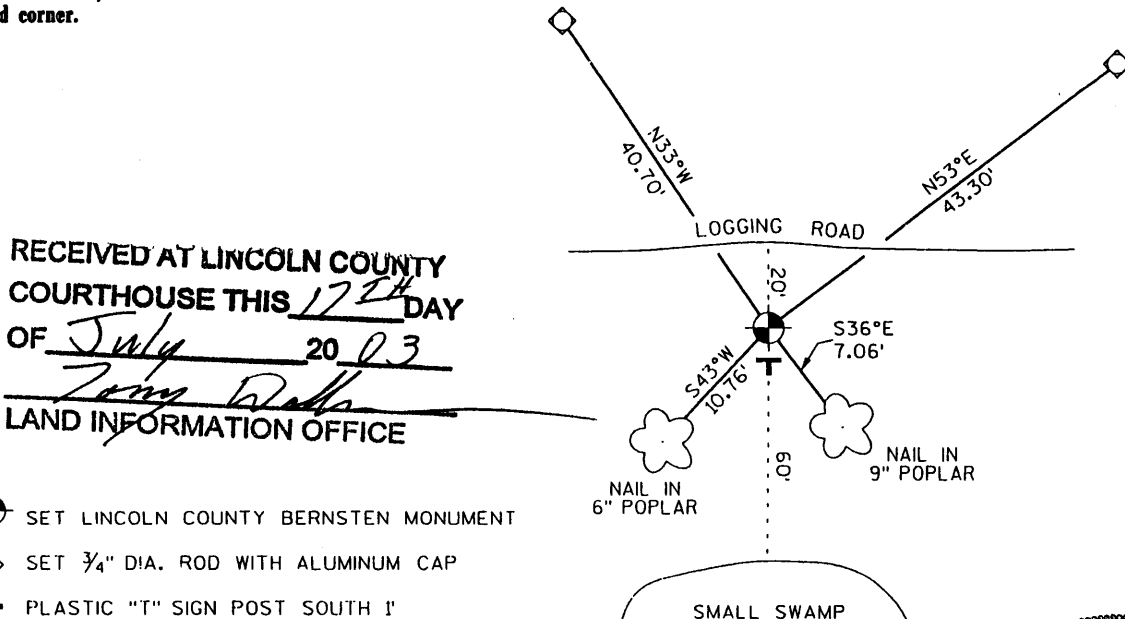
(b)(f)(g)(h) Description of monument found at this corner and if it was accepted, state all evidence (material, testimonial, occupational, plats, records, other monuments) used as a basis for accepting. If not accepted or if nothing was found, state evidence used as basis for establishing location. If reestablished through lost corner proportionate methods, indicate all monuments, distances and directions used to establish. Indicate type of monument found or set and sign post.

1860 - Original corner set by Alfred Millard  
 1975- Bill Stuth, Owen Illinois found iron pipe (by others)  
 1997- Keith R. Vreeland used 1/2" dia. iron pipe found, see C.S.M. #1041.  
 2003- I found 1 1/2" dia. iron pipe and sq. post. Replaced with Lincoln County Bernsten monument stamped to identify corner.

Witnessed corner as shown below.



(c)(d)(e) Plan view of corner with ties to at least 4 witness monuments. If in disagreement with previously established corner, show the distances between the two corners and also indicate the ties to the disputed corner.



RECEIVED AT LINCOLN COUNTY  
 COURTHOUSE THIS 17<sup>TH</sup> DAY  
 OF July 20 03  
*Dennis Roberts*  
 LAND INFORMATION OFFICE

- SET LINCOLN COUNTY BERNSTEN MONUMENT
- ◇ SET 3/4" DIA. ROD WITH ALUMINUM CAP
- ⊥ PLASTIC "T" SIGN POST SOUTH 1'

(i) I, Dennis Roberts, Registered Land Surveyor #S-1863, hereby certify that the corner location on this record was determined by me or under my direction and control and that this U.S. Public Land Survey Monument Record is correct and complete to the best of my knowledge and belief.

*Dennis B. Roberts*  
 Signature Date 6-20-03

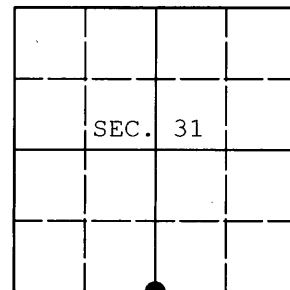


Index No. \*\*\*\*\*  
 Copy From  
 Lincoln City  
 3607310020

**U.S. PUBLIC LAND SURVEY MONUMENT RECORD**

Note: This form is intended and designed to fulfill all requirements of Wisconsin Administrative Code, Chapter A-E 7.08 U.S. Public Land Survey Monument Record (3) (a) (b) (c) (d) (e) (f) (g) (h) (i). An additional sheet may be added if necessary to conform with said requirements.

(a) CORNER LOCATION: WISCORS (Oneida County)  
1/4 Cor. of Secs. 6 & 31 N: 134,815.94 USft  
Township 36 North E: 199,900.80 USft  
Range 7 East of the 4th P.M. Datum: NAD 1983(2011)  
Town of Woodboro County of Oneida



(b) HISTORY OF ORIGINAL CORNER ESTABLISHMENT

Original Surveyor: Original Accessories:  
Date of Survey: Commenced:  
Completed:

(b) (f) (g) (h) Description of monument found at this corner and if it was accepted, state all evidence (material, testimonial, occupational, plats, records, other monuments) used as a basis for accepting. If not accepted or if nothing was found, state evidence used as basis for establishing location. If re-established through lost corner proportionate methods, indicate all monuments, distances and directions used to establish. Indicate type of monument and sign post found or set.

NOTE: This is a perpetuation of a previous USPLS Monument Record by Dennis B. Roberts, RLS dated June 20, 2003 and filed in the office of the Oneida County Register of Deeds. A complete history of the corner can be found on the previous monument record. I accept the previous location as a true and faithful perpetuation or reestablishment of the original corner location and further perpetuate it as follows.

August 6, 2014: I found and accepted Roberts' monument, a 4" diam. Lincoln Co. Berntsen aluminum monument projecting 4" above a collar of stone. Roberts' accessories were found in substantial agreement with his previous record and were not remeasured as the sole purpose of this work is to report the coordinates of the corner point.

The coordinates shown were derived from offset static GPS observations referenced to the WISCORS network.

(c) (d) (e) Plan view of corner with ties to at least 4 witness monuments. If in disagreement with previously established corner, show the distances between the two corners and also indicate the ties to the disputed.

REGISTER OF DEEDS OFFICE  
ONEIDA COUNTY  
FILED

OCT 13 2014

AT \_\_\_\_\_ O'CLOCK \_\_\_\_\_ M  
KYLE J. FRANSON  
REGISTER OF DEEDS

(i) I, Jeffrey W. Austin, Registered Land Surveyor No. S-1885, hereby certify that the corner location on this record was determined by me or under my direction and control and that this U.S. Public Land Survey Monument Record is correct and complete to the best of my knowledge and belief.



Signature

Date

3607310020 (INDEX NO. Z-3)

SEP. 7, 2014