

U.S. PUBLIC LAND SURVEY MONUMENT RECORD

Note: This form is intended and designed to fulfill all requirements of Wisconsin Administrative Code, Chapter A-E 7.08 U.S. Public Land Survey Monument Record (3)(a)(b)(c)(d)(e)(f)(g)(h)(i). An additional sheet may be added to if necessary to conform with said requirements.

(a) Corner Location: Township 36 North
Range 7 East

Woodboro Township

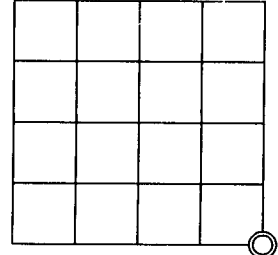
Oneida County, Wisconsin

(83/91) UMD
WISCRS (Oneida County)
N: 134833.10463 USft
E: 223678.9796 USft

REGISTER OF DEEDS OFFICE
ONEIDA COUNTY
FILED

JUL 11 2017

AT _____ O'CLOCK _____ M
KYLE J. FRANSON
REGISTER OF DEEDS

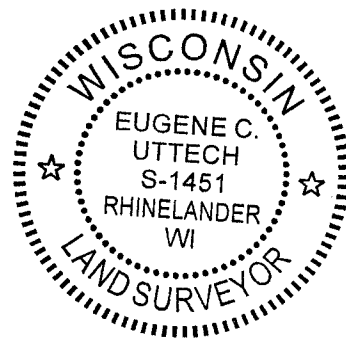
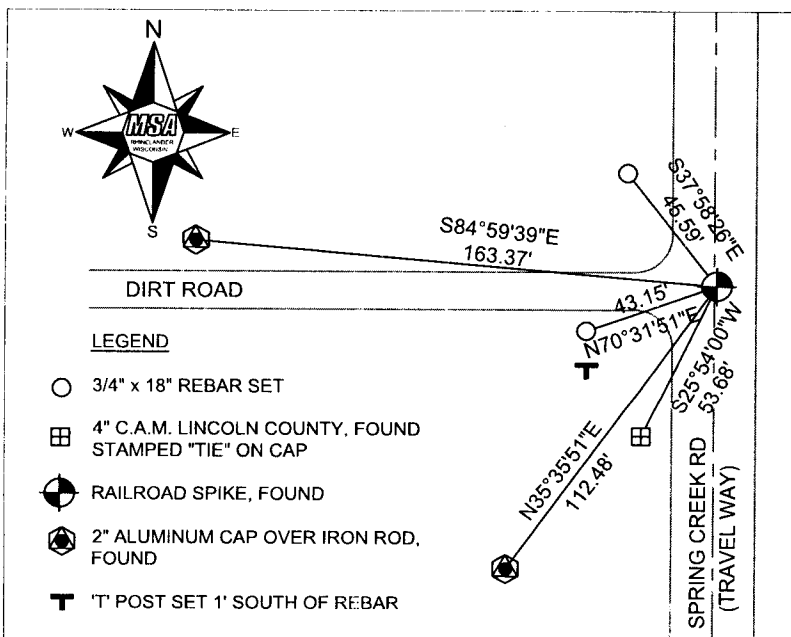


Section 35

(b)(f)(g)(h) Description of monument found at this corner and if it was accepted, state all evidence (material, testimonial, occupational, plats, records, other monuments) used as a basis for accepting. If not accepted or if nothing was found, state evidence used as basis for establishing location. If reestablishment through lost corner proportionate methods, indicate all monuments, distances and directions used to establish. Indicate type of monument found or set and sign post.

Original corner set by Alfred Millard in 1860. On October 28, 1891 B.F. Dorr surveyed Section 35, see Old Field Book 22, Page 39, Oneida County Surveyor files. At Southeast corner, Dorr referenced "found bearing trees". In November, 2003, Dennis Roberts, RLS S-1863 set this corner for Lincoln County Monumentation Project. Dennis noted that he found no evidence of corner and set this corner by proportionate method. Dennis set a Lincoln County Bernsten monument. In November 2006, I found Bernsten Monument set by Dennis. I traversed Section 35 and took measurements to existing evidence. I found called distances by Door agreed well with established corners and existing evidence in Section 35. I also noted that the Northeast corner and East 1/4 corner of Section 35 are on the centerline of Spring Creek Road. I believe the centerline of road best perpetuated the original section line in an East - West direction. I recalculated this corners position by holding the centerline of Spring Creek Road and held the called distance by Dorr of 5274.72 feet from the Northeast corner of Section 35. I shared this information with the County Surveyors Office. In August, 2009 Michael Oestreich, RLS No. S-2118, used my calculations for this corner to do a survey in Section 35. See survey map no. C-2656. Mike set a railroad spike at the calculated position. On March 21, 2017, Mike and I revisited this corner. We found railroad spike in place. Mike verified GPS coordinates and I updated the original ties from Dennis Roberts.

(c)(d)(e) Plan view of corner with ties to at least 4 witness monuments. If in disagreement with previously established corner, show the distances between the two corners and also indicate the ties to the disputed corner.



(i) I, Eugene C. Uttech, Professional Land Surveyor #S-1451, and Michael Oestreich, Professional Land Survey #S-2118, hereby certify that the corner location on this record was determined by me or under my direction and control and that this U.S. Public Land Survey Monument Record is correct and complete to the best of my knowledge and belief.

Eugene C. Uttech 6/29/2017
Signature Date

Michael L. Oestreich 7/10/17
Signature Date

Index No. 3607350000

2-21