

CERTIFIED LAND CORNER RESTORATION

Index No. X-1

State of Wisconsin }
 County of Oneida } ss.
 I William E. Bandow, do hereby certify that on the 23 rd day of January, 1981, I found evidence of the West 1/4 corner of Section 31 Township 36, North, Range 8 East, Fourth Principal Meridian, as described hereon; and that from this evidence I established a new monument and accessories as described hereon to perpetuate the original location of this corner.

Resident witnesses:

History of original corner establishment:

Corner set by Alex Anderson in 1860. North between Section 31 & 36. 40.00 set post.

BT's Yellow Pine 22" S 38°W 21 Links
White Pine 9" S 81°E 24 Links

Description of corner evidence found:

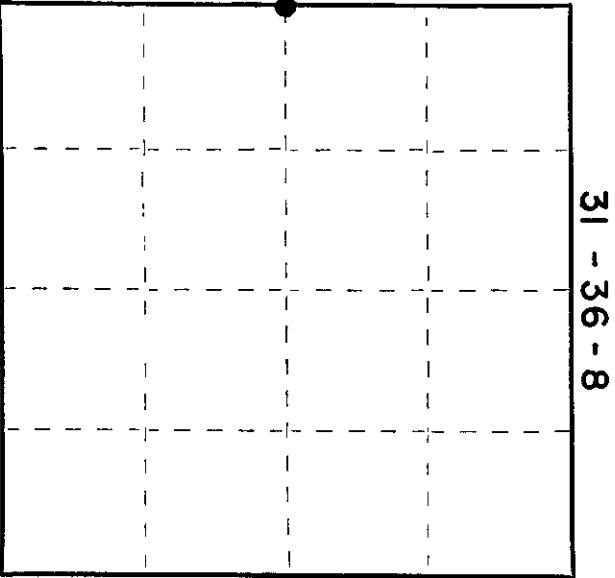
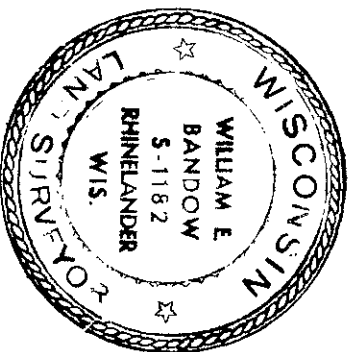
D. H. Vaughan reset corner from original BT in 1903. Recovered corner in 1909. Found 3/4" iron pipe flush in roadway. No BT's.

Description of monument and accessories I established to perpetuate the original location of this corner.

Iron pipe remains in place. Made 2 new BT's.

Norway Pine 14" N 6°W 38.2'
 Norway Pine 14" N 50°W 46.8'

Distances are to center of trees.



○ = Corner monument restored.

Dated at Rhineland, Wis., this 6 th day of February, 1981.

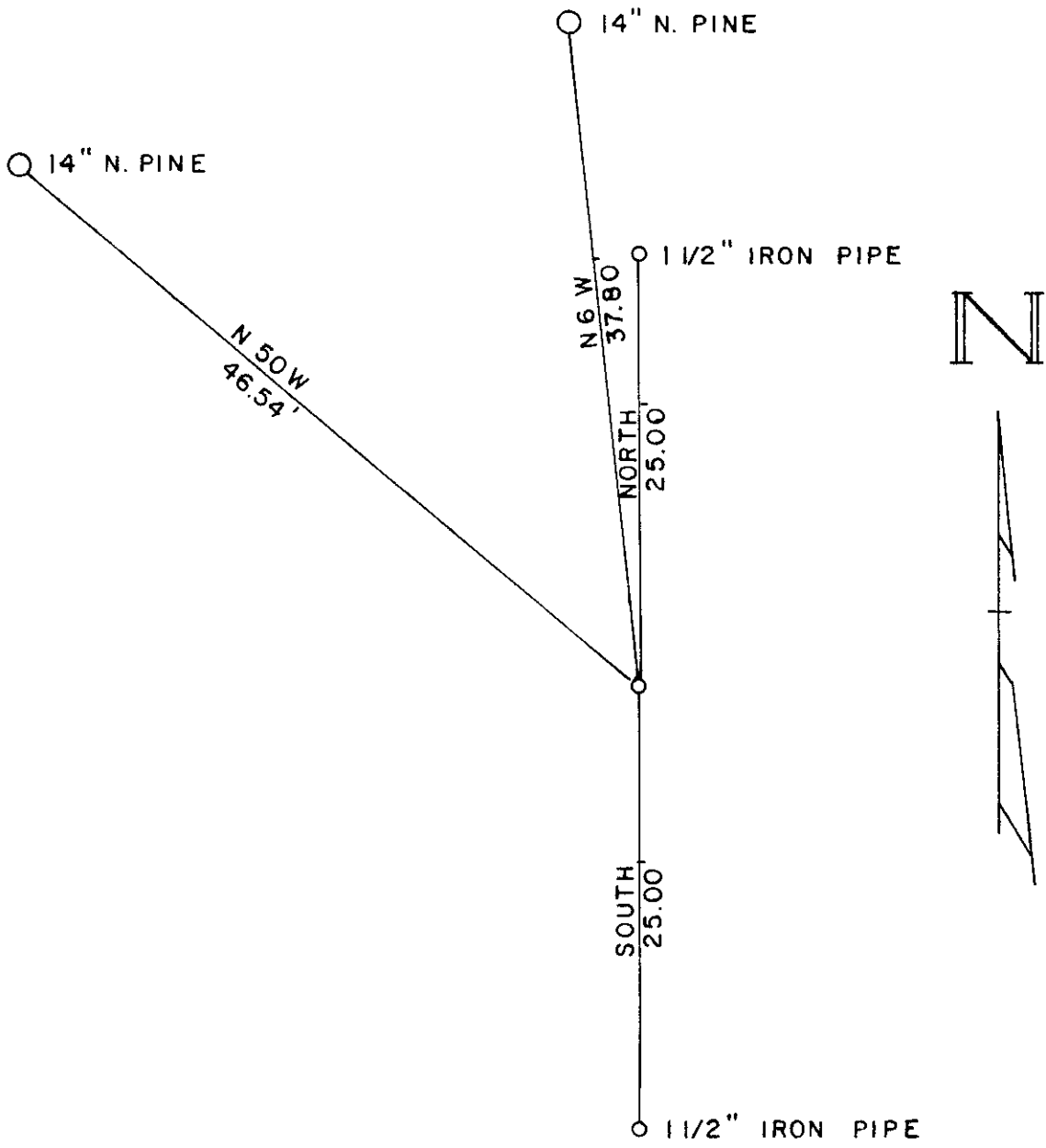
Signature: William E. Bandow Title: Registered Land Surveyor Registration No. S-1182
 (County Surveyor, Registered Land Surveyor, or other duly authorized official)

Office of Register of Deeds, County of Oneida, hereby certify that the within instrument was filed in this office for record on the 11 day of June, 1981 at 8:00 o'clock P M.

Doris Verage (Register of Deeds)

By Ernest A. Pines Deputy

3607362000





CERTIFIED LAND CORNER RESTORATION FOR U.S. PUBLIC LAND SURVEY MONUMENT RECORD

State of Wisconsin } ss. County of Oneida

I William E. Badow, do hereby certify that on the 19th day of November, 1982, I found evidence of the West 1/4 corner of Section 31 Township 36 North, Range 8 East, Fourth Principal Meridian, as described hereon; and that from this evidence I established a new monument and accessories as described hereon to perpetuate the original location of this corner:

Description of original monument and accessories and subsequent restorations:

Corner set by Alfred Millard in September, 1860. North between 31 & 36 40.00 set 1/4 post. BT's Y. Pine 22" S38W 21, W. Pine 9" S81E 24. In 1909 D.H. Vaughan found post he set earlier from SW tree.

Description of corner evidence found:

Found 1/2" iron pipe near center of road. Distance to East 1/4 corner checks D.H. Vaughan 2'. Distance to NW corner checks Government 2'.

Description of monument and accessories I established to perpetuate the location of this corner:

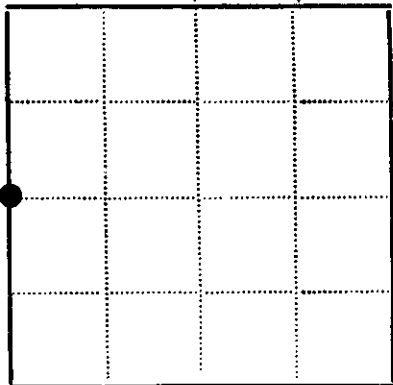
Iron pipe remains in place. Set 1 1/2" iron pipe 25.00' North & South of corner. Put PK nail in face blaze of following BT's:

- N. Pine 14" N6W 37.80'
N. Pine 14" N50W 46.54'

See back side for diagram



SECTION 31, T36N, R8E



- Corner monument restored
[] -

Resident witnesses.....

Dated at Rhinelander Wisconsin, this 19th day of November 1982.

Signature William E. Badow Title Registered Surveyor (County Surveyor, Registered Land Surveyor, or other duly authorized official)

Surveyors Registration No. S 1182

Office of Reg. of Deeds County of Oneida

I hereby certify that the within instrument was filed in this office for record on the 11 day of June 1986, and was filed in Book No. Page No. of County Records.

Signature Doris Verage Kuhn Title Reg. of Deeds Cynthia A. Potts, Deputy

Township 36, Range 8, Section 31, Index No., Page No.

3607362000