

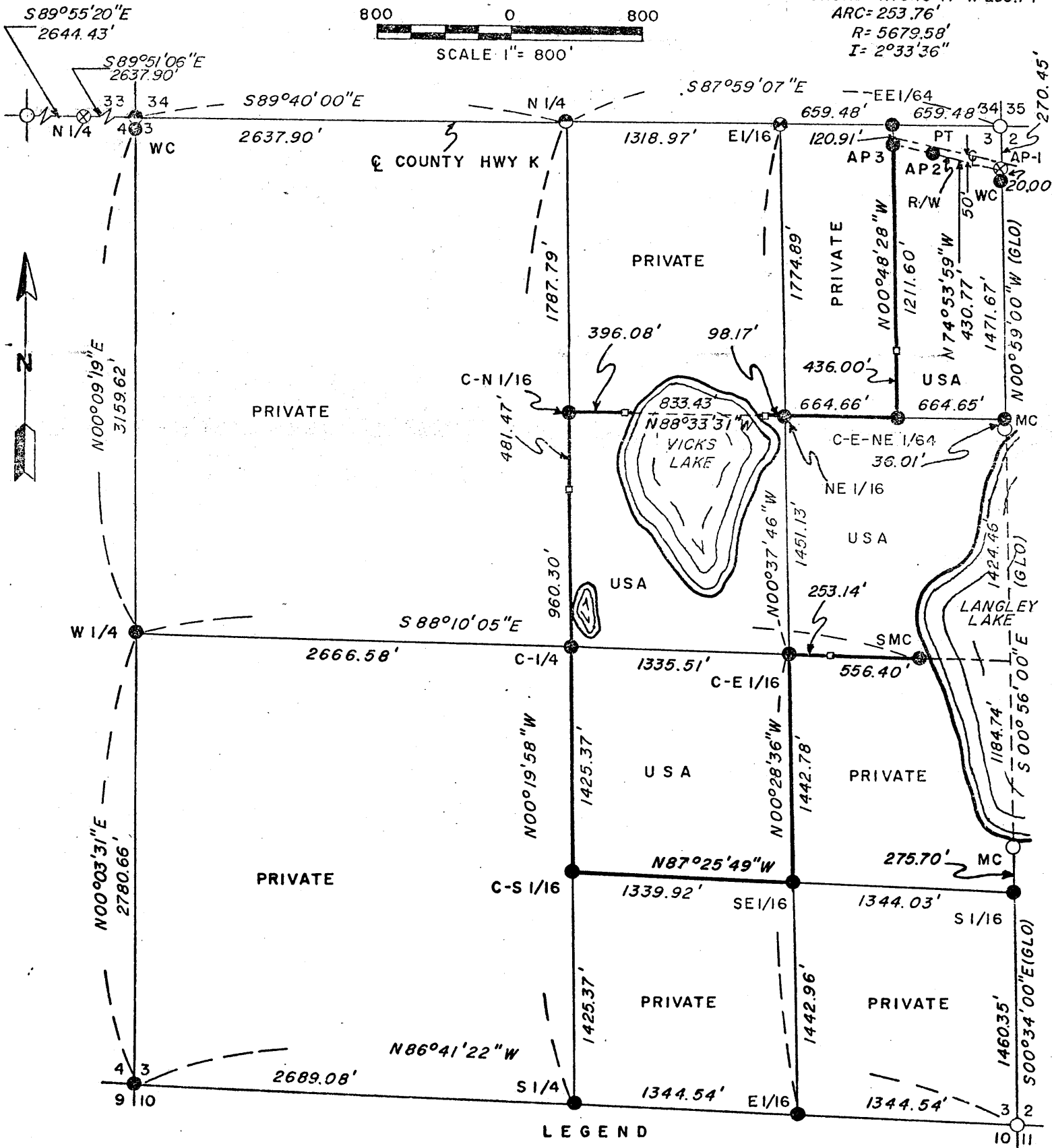
REGISTER'S OFFICE }  
 Oneida County, Wis. }  
 Received for Record the 12th day of  
January A. D. 19 76 at  
200 o'clock P. M. and recorded in  
 Vol. \_\_\_\_\_ on page \_\_\_\_\_  
Doris Verage Ruel  
 Register

CERTIFIED SURVEY MAP  
 U. S. GOVERNMENT LAND

Sheet 1 of 6

Being all the NW1/4 SE1/4, SW1/4 NE1/4,  
 Gov't. Lot 1, and part E1/2 NE1/4 NE1/4,  
 Section 3, T.36N. R.8E. 4th P.M.  
 Oneida County, Wisconsin

CURVE DATA AP2 TO AP3  
 CHORD= N76°10'47"W 253.74'  
 ARC= 253.76'  
 R= 5679.58'  
 I= 2°33'36"



- LEGEND
- Recovered G.L.O monument
  - 2" Galvanized Iron pipe with brass cap stamped to identify corner
  - ⊙ Square headed bridge bolt
  - ⊗ 2" Galvanized Iron pipe 3.5' long
  - ⊗ Axle shaft accepted as corner
  - 4 X 4 Cedar line post
  - M. C. Meander corner
  - W.C. Witness corner
  - S.M.C. Special meander corner
  - A.P. Angle point
  - Boundary line

3608030020

D-16

CERTIFIED SURVEY MAP  
U. S. GOVERNMENT LAND

Sheet 2 of 6

Being all the NW $\frac{1}{4}$  SE $\frac{1}{4}$ , SW $\frac{1}{4}$  NE $\frac{1}{4}$ ,  
Gov't Lot 1, and part E $\frac{1}{2}$  NE $\frac{1}{4}$  NE $\frac{1}{4}$ ,  
Section 3, T. 36N. R. 8E. 4th P.M.  
Oneida County, Wisconsin

GENERAL NOTES

This survey was made by the U.S. Department of Agriculture, Forest Service, for the purpose of establishing and perpetuating the corners and marking the boundaries of U.S. Government land within Section 3, Township 36 North, Range 8 East, Fourth Principal Meridian, County of Oneida, State of Wisconsin.

The U.S.A. ownership in the E $\frac{1}{2}$  NE $\frac{1}{4}$  NE $\frac{1}{4}$  is all that part south of the center line of the highway as now located subject to a 100 foot wide easement south of said center line for highway and surplus earth disposal purposes.

In 1934 the General Land Office made a retracement survey of the original line between sections 2 and 3. Each of the corners perpetuated by the 1934 survey was recovered in place and used as control for subdividing section 3.

Controlling corners on the north, west, and south perimeter of section 3 were recovered or restored and new corner accessories established. The new bearing trees were blazed and scribed.

Quarter Corner to Sections 3 - 34

Corner position recovered as restored by F. R. Wincentzen (S-155). Remarkd corner position in road with 1 inch square head 5/8 inch diameter 1 foot long bridge bolt from which:

1 $\frac{1}{2}$ " Iron Pipe bears North	33.0 ft	(50.0 links)
Balsam 5" bears S. 12°-30'E	35.8 ft.	(54.2 links)
Balsam 4" bears S. 48°E	54.0 ft.	(81.8 links)

Section Corner to Sections 3-4-33-34

In 1927 the G.L.O. marked corner position with brass capped iron post. No evidence of corner monument found apparently due to road reconstruction since 1927.

Restored corner position on the center line of County trunk K by single proportionate measurement between quarter corner to sections 3-34 and the quarter corner to sections 4-33. Marked corner position by 5/8 inch diameter 1 foot long square head bridge bolt and from which:

Witness corner monument bears S-0°-09'W	50.0 ft.	( 75.8 links)
NW corner house bears N.31°-37'E	91.2 ft.	(138.2 links)

Quarter Corner to Sections 3-4

Corner position marked in 1914 by D. H. Vaughn and referenced to a white pine stump. Recovered corner set by Vaughn. Marked corner position with a 2 inch by 5 foot long iron pipe and from which:

Aspen 5" bears N.60°-07'E	31.2 ft.	( 47.3 links)
Aspen 7" bears S.10°-05'W	32.8 ft.	( 49.7 links)
Aspen 7" bears S.45°-52'E	35.5 ft.	( 53.8 links)
Pine stump 26" bears N.65°-49'W	19.6 ft.	( 29.7 links)
Fence corner S.83°-45'E	139.25 ft.	(211.0 links)

**CERTIFIED SURVEY MAP**  
**U.S. GOVERNMENT LAND**

Sheet 3 of 6

Being all the NW1/4 SE1/4, SW1/4 NE1/4,  
Gov't. Lot 1, and part E1/2 NE1/4 NE1/4,  
Section 3, T.36 N. R.8E. 4th P.M.  
Oneida County, Wisconsin

Quarter Corner to Sections 3-10

Restored corner position by single proportionate measurement and on line between the southeast section corner and the southwest section corner of section 3. Marked corner position with a 2" by 5 foot long iron pipe and from which:

Oak 5" bears N.61°-46'E	19.4 ft.	(29.4 links)
Oak 6" bears S.40°-48'E	15.5 ft.	(23.5 links)
Twin Oak 8" bears S.45°-42'E	27.9 ft.	(42.3 links)
Oak 5" bears N.69°-36'W	14.8 ft.	(22.4 links)

I then subdivided the section in the following manner marking the established corner positions with monuments as shown on the plat map. New bearing trees are blazed and scribed.

Center Quarter Corner

Established and marked the center quarter corner on the intersection of the straight lines between opposing quarter corner positions on the perimeter of section 3 and from which:

Spruce 4" bears S.51°-46'W	6.8 ft.	(10.3 links)
Spruce 5" bears N.76°-30'W	25.8 ft.	(39.1 links)
Tamarack 6" bears N.58°-06'E	37.8 ft.	(57.3 links)

East Sixteenth Corner to Sections 3-34

Established and marked the corner on line and midway between the north quarter corner and the northeast section corner of section 3 and from which:

Maple 8" bears S.24°-52'E	44.1 ft.	( 66.8 links)
Maple 6" bears N.14°-33'E	74.4 ft.	(112.7 links)
Ironwood 11" bears S.25°-17'W	57.3 ft.	( 86.8 links)
Center road North	16.2 ft.	( 24.5 links)

East-east Sixty-fourth Corner to Sections 3-34

Established and marked the corner on line and midway between the northeast section corner and the east sixteenth corner to sections 3-34. No bearing trees.

North sixteenth corner to sections 2-3

Established and marked corner by single proportionate measurement between the northeast section corner and the east quarter corner position and on line and between the northeast section corner and the section line meander corner on the north side of Langley Lake and from which:

Tamarack 4" bears S.72°-30'W	20.2 ft.	(30.6 links)
Spruce 5" bears N.9°-00'W	18.2 ft.	(27.6 links)
G.L.O. meander corner bears S.0°-59'E	36.0 ft.	(54.5 links)

South Sixteenth Corner to Section 2-3

Established and marked corner by single proportionate measurement between the east quarter corner position and the southeast section corner and on line between southeast section corner and the section line meander corner on the south side of Langley Lake and from which:

Maple 7" bears S.73°-58'E	22.2 ft.	( 33.6 links)
Oak 15" bears N.20°-48'E	23.6 ft.	( 35.8 links)
G.L.O. meander corner bears N.0°-34'W	275.7 ft.	(417.7 links)

**CERTIFIED SURVEY MAP**  
**U. S. GOVERNMENT LAND**

Sheet 4 of 6

Being, all the NW1/4 SE1/4, SW1/4 NE1/4,  
Govt. Lot 1, and part E1/2 NE1/4 NE1/4,  
Section 3, T.36N. R.8E. 4th P.M.  
Oneida County, Wisconsin

East Sixteenth Corner to Sections 3-10

Recovered and replaced white birch scribed post midway and on line between southeast section corner and the south quarter corner of section 3 and from which:

Oak 8" bears S.24°-51'W	6.2 ft.	( 9.4 links)
Maple 5" bears N.28°-05'W	25.2 ft.	(38.2 links)

Center South Sixteenth Corner Section 3

Established and marked corner midway and on line between center quarter corner and the south quarter corner and from which:

Maple 4" bears S.21°-15'E	9.0 ft.	( 13.6 links)
W.Pine 4" bears S.12°-07'W	34.8 ft.	( 52.7 links)
Maple 8" bears N.15°-11'W	26.7 ft.	( 40.5 links)
Maple 7" bears N.66°-15'E	119.0 ft.	(180.3 links)

Center North Sixteenth Corner Section 3

Established and marked corner by single proportionate measurement on line between the center quarter corner and the north quarter corner and from which:

Tamarack 5" bears S.42°-45'E	12.5 ft.	(18.9 links)
Tamarack 5" bears S.44°-45'W	16.7 ft.	(25.3 links)
Tamarack 7" bears N.59°-45'W	28.5 ft.	(43.2 links)
Tamarack 7" bears N.33°-45'E	38.0 ft.	(57.6 links)

Center East Sixteenth Corner Section 3

Established and marked corner midway and on line between the center quarter corner and the east quarter corner position and from which:

Spruce 5" bears S.52°-05'E	14.0 ft.	(21.2 links)
Spruce 5" bears N.38°-34'W	29.8 ft.	(45.1 links)
Spruce 4" bears N.29°-22'E	17.5 ft.	(26.5 links)

Southeast Sixteenth Corner Section 3

Established and marked corner on the intersection of the straight lines between opposite corresponding sixteenth corners on the perimeter of the southeast quarter of the section and from which:

W. Birch 6" bears N.10°-11'E	27.5 ft.	(41.7 links)
W. Pine 9" bears S.21°-18'E	31.2 ft.	(47.3 links)
W. Pine 4" bears S.77°-05'W	33.6 ft.	(50.9 links)

Northeast Sixteenth Corner Section 3

Established and marked corner on the intersection of the straight lines between opposite corresponding sixteenth corners on the perimeter of the northeast corner of the section and from which:

Cedar 3" bears N.68°E	13.7 ft.	(20.8 links)
Cedar 6" bears S.33°-30'E	20.6 ft.	(31.2 links)
Cedar 8" bears S.24°-30'W	10.0 ft.	(15.2 links)
Cedar 5" bears N.51°W	6.6 ft.	(10.0 links)

CERTIFIED SURVEY MAP  
U. S. GOVERNMENT LAND

Sheet 5 of 6

Being all the NW1/4 SE1/4, SW1/4 NE1/4,  
Gov't Lot 1, and part E1/2 NE1/4 NE1/4,  
Section 3, T. 36N. R. 8E 4th P. M.  
Oneida County, Wisconsin

Center East Northeast Sixty Fourth Corner Section 3

Established and marked corner midpoint and on line between northeast sixteenth corner and the north sixteenth corner to section 2-3 and from which:

Spruce 4" bears N.32°E	5.9 ft.	( 8.9 links)
Spruce 3" bears S.82°E	8.6 ft.	(13.0 links)
Spruce 4" bears S.80°W	10.6 ft.	(16.1 links)
Spruce 4" bears N.37°-30'W	15.1 ft.	(22.9 links)

Special Meander Corner

Corner established and marked on east-west center line of section 65 feet west of Langley Lake and from which:

Tamarack 4" bears S.32°W	14.8 ft.	(22.4 links)
W. Pine 8" bears N.61°W	13.0 ft.	(19.7 links)

Angle Point No. 1

Marked point with 2½" diameter drive shaft on section line to sections 2-3 and the south R/W line of County trunk K and from which:

Maple 14" bears S.3°-48'W	32.0 ft.	(48.5 links)
Balsam 4" bears S.54°-09'W	37.4 ft.	(56.7 links)
Witness Corner monument bears S.0°-59'E	20.0 ft.	(30.3 links)

Angle Point No. 2

Marked point on south R/W line of County trunk K and point of tangency of road curve and from which:

Balsam 8" bears S.0°-50'E	35.4 ft.	(53.6 links)
Ash 12" bears S.59°-12'W	47.6 ft.	(72.1 links)

Angle Point No. 3

Marked point on south R/W line of County trunk K and the north-south center line of NE¼ NE¼ section 3 and from which:

Balsam 7" bears S.22°-39'E	69.9 ft.	(105.9 links)
East east sixty fourth corner on section line bears N.0°-48'W	120.91 ft.	(183.2 links)

All bearings shown on the plat map are referenced to the 1934 General Land Office bearing value for the section line common to sections 2-3 north of Langley Lake, being North 0°-59'West.

The transit-traverse control survey for the exterior boundaries of the section closed by 6.66 feet in latitude and 2.52 feet in departure. The closure was adjusted.

The field notes and a copy of this plat are on file in the Forest Supervisor's Office at Rhinelander, Wisconsin.

