

At _____ o'clock _____ M
THOMAS H. LEIGHTON
REGISTER OF DEEDS

This form is intended to fulfill the requirements of Chapter A-E 7.08 (3)(a) thru (i) U.S. Public Land Survey Monument Location Record, Wisconsin Administrative Code. Use the reverse side of form for continuation.

U.S. PUBLIC LAND SURVEY MONUMENT LOCATION RECORD

USPLS CORNER: West 1/4 Corner SECTION: 4 TOWNSHIP: 36 NORTH RANGE: 8 East

NAME OF WATERWAY FOR M.C. CORNER: N/A SECTION LINE: N/A

(CITY)(VILLAGE)(TOWN) OF: Town of Crescent COUNTY OF: Oneida

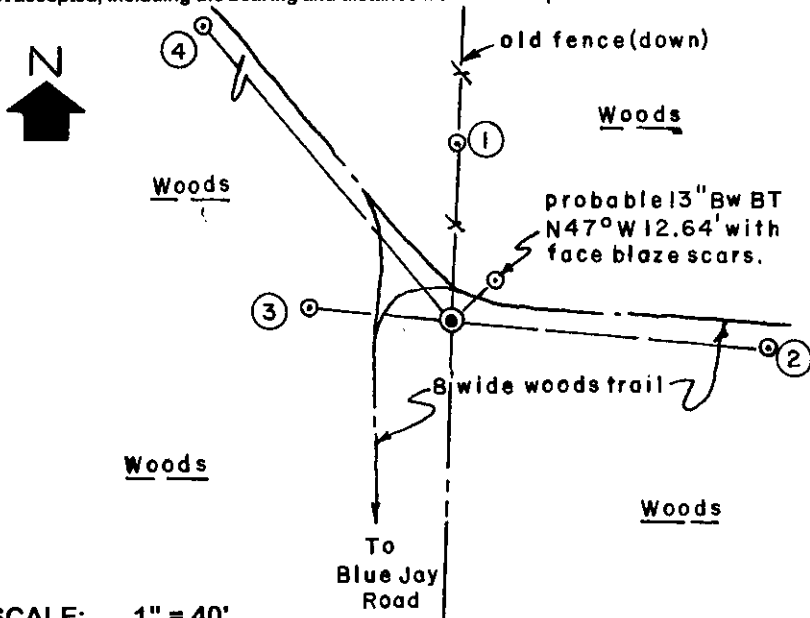
Description of monument found or placed and all other evidence used as the basis for monument location; including monuments and related measurements required if the corner location was reestablished by lost corner proportionate methods. Also indicate name of original surveyor, original survey date and the corner monument, bearing trees, witness or other reference monuments established; including measured bearing and distance ties, from available records.

Found and accepted an old 2" dia. iron pipe undisturbed with uncapped top 1" above existing grade. I carefully pulled the 30" long iron pipe and reset corner location with a standard 2" dia. by 30" long aluminum pipe monument with stamped Oneida County cap 2" above grade. Also found top of an old cut off 4" dia. wood post nearly flush with grade 6" NE of the corner. I left old iron pipe and part of an old 'U' channel steel post found along south side of new monument set. Corner is 155' or so North of Blue Jay Road bend at existing driveway entrance to Fire No. 6741, the Rev. Kenneth Roufs owner, who directly witnessed this corner recovery.

In July 1863, William E. Daugherty/GLO set a wood post as the original corner and marked OBTs: a 7" Pw S67°E 10 links and a 7" Bw N20°W 14 links, which are all now gone. In October 1914, D.H. Vaughan found old wood post down at the corner he had set from SE Pw OBT in 1902, set a new post and noted nothing near for new BTs. In 1961, Ivan Branham noted old post reset and BT stumps at fence corner during his retracement and subdivision of Section 4 per L-1282 and L-1299 in Oneida County records. In 1962, Dennis Roberts/Northwoods Surveyors, Minocqua replaced Branham's wood post with a 2" iron pipe, set a new 5" sq. scribed marker post nearby and marked new BTs: a 9" Oak S83°E 54.6', now a probable Oak at S86°E 66.46' and a 6" Pw N07°W 59.6', now dead with upper & lower blazes open, also fences noted East and North of the corner, per field notes at Foltz & Associates, Inc. Minocqua, Wis. and Plat of Survey by James G. Griffin, RLS 755, filed as B-4245 in Oneida County survey records. In 1972, Hess noted an iron pipe at corner per Plat of Survey filed as B-593 in Oneida County survey records.

This recovery completed August 5, 1999.

Plan view map of monument location with bearing and distance ties to a minimum of four(4) described witness or reference monuments of concrete, natural stone, iron, live bearing trees or equivalent material. If applicable, also show a minimum of two(2) bearing and distance ties to any other monument found and not accepted; including the bearing and distance from the accepted monument.



WITNESS MONUMENT TIES:

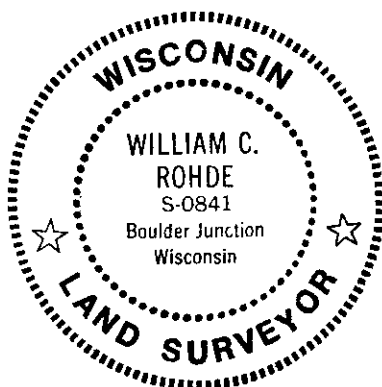
- ① New BT 8" Pw, with ingrown N/S fence wire, N02°E 36.36'.
- ② Probable old BT 10.5" Or with faint blaze on lower face I chopped open and painted, S86°E 66.46'.
- ③ New BT 12" Pw N84°W 29.46'.
- ④ New BT 11" Mr N49°W 87.00'.

Standard white poly 'T' marker post set 4" North of corner monument.

SCALE: 1" = 40'

Unless otherwise indicated, all bearing tree ties are to a .25" dia. by 2.5" long PK nail with a 1.25" dia. steel washer driven into unblazed right face and a .25" dia. by 2.5" long PK nail with a 2" dia. steel washer stamped BT is also driven into unblazed face of bearing tree at DBH; the basis for measured bearings is by compass to nearest degree and all tie distances are measured horizontal by steel tape corrected to nearest 1/100th feet at standard temperature of 68° F.

RLS SEAL:

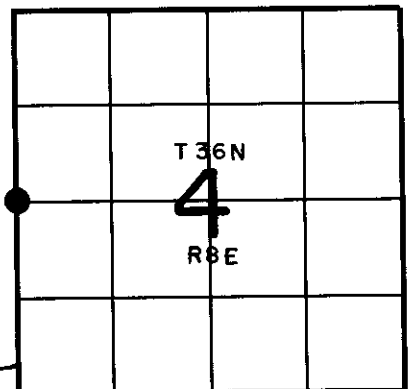


LAND SURVEYOR CERTIFICATE:

I, William C. Rohde, hereby certify that I am duly licensed as a Professional Land Surveyor in the State of Wisconsin; that this USPLS monument location was determined by me and/or under my direct supervision and control; and that this U.S. Public Land Survey Monument Location Record is true and correct to the best of my knowledge and belief.

Signed: *William C. Rohde*
William C. Rohde RLS 841

Date Signed: September 6, 1999



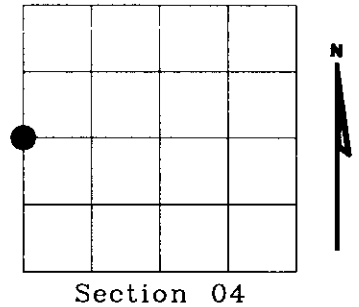
SECTION LOCATION MAP

INDEX NO. C 9
3608052000

U.S. PUBLIC LAND SURVEY MONUMENT RECORD

NOTE: This form is intended and designed to fulfill all requirements of Wisconsin Administrative Code, Chapter A-E 7.08 U.S. Public Land Survey Monument Record (3)(a)(b)(c)(d)(e)(f)(g)(h)(i). An additional sheet may be added if necessary to conform with said requirements.

(a) Corner location: Township 36 North
 Range 08 East
 Town of CRESCENT,
 ONEIDA County, Wisconsin



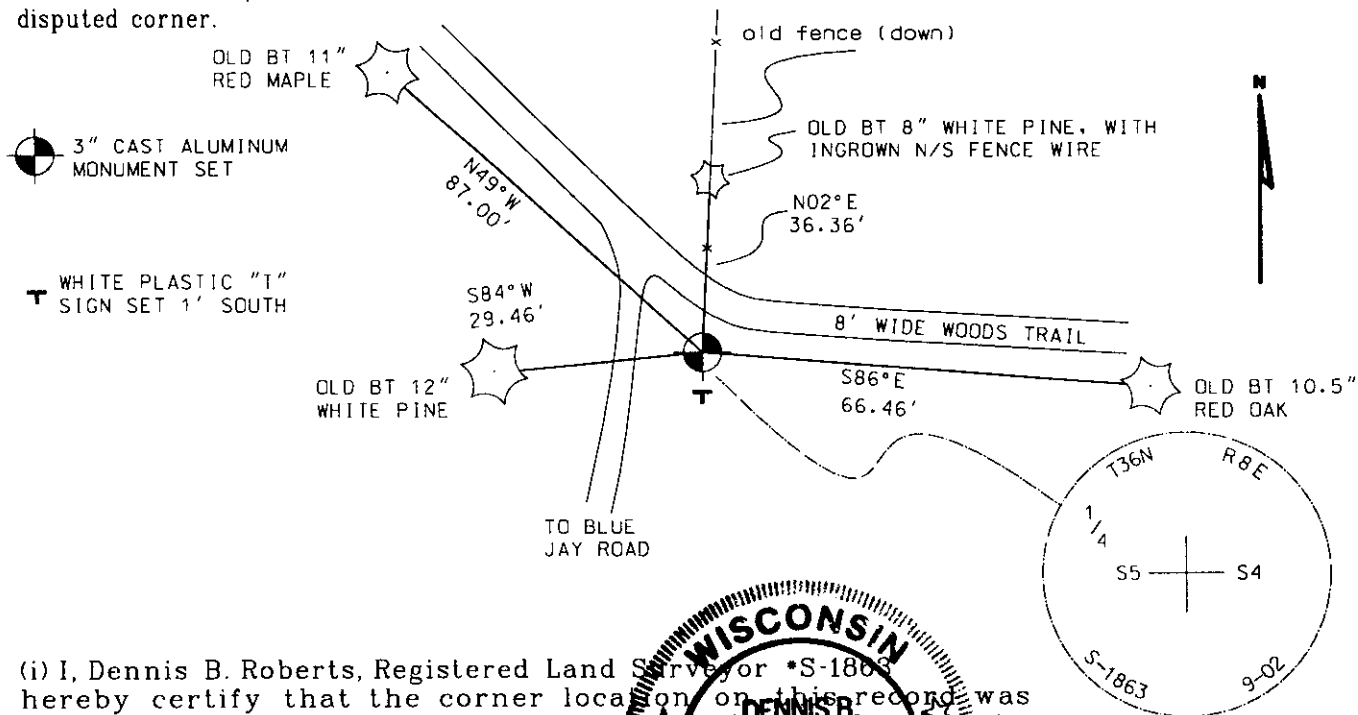
(b)(f)(g)(h) Description of monument found at this corner and if it was accepted, state all evidence (material, testimonial, occupational, plats, records, other monuments) used as a basis for accepting. If not accepted or if nothing was found, state evidence used as basis for establishing location. If reestablished through lost corner proportionate methods, indicate all monuments, distances and directions used to establish. Indicate type of monument found or set and sign post.

In July 1863, William E. Daugherty/GLO set a wood post as the original corner and marked OBTs: a 7" White Pine S67°E 10 links on a 7" White Birch N20°W 14 links, which are all now gone. In October 1914, D.H. Vaughan found old wood post down at the corner he had set from SE White Pine OBT in 1902, set a new post and noted nothing near for new BTs. In 1961, Ivan Branham noted old post reset and BT stumps at fence corner during his retracement and subdivision of Section 4 per L-1282 and L-1299 in Oneida County records. In 1962, Dennis Roberts/Northwoods Surveyors, Monocqua replaced Branham's wood post with a 2" iron pipe, set a new 5" sp. scribed marker post nearby and marked new BTs: a 9" Oak S83°E 54.6', now a probable Oak at S86°E 66.46 and a 6" White Pine N07°W 59.6', now dead with upper & lower blazes open, also fences north East and North of the corner, per field notes at Foltz & Associates, Inc. Minocqua, WI and Plat of Survey by James G. Griffin, RLS 755, filed as B4245 in Oneida County survey records. In 1972, Hess noted an iron pipe at corner per Plat of Survey filed as B-593 in Oneida County survey records.

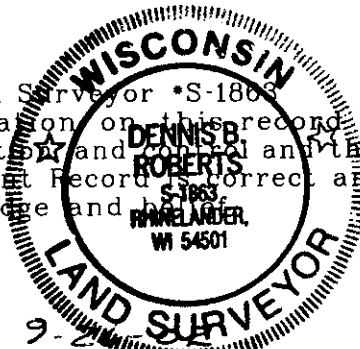
William C. Rhode found and accepted an old 2" dia. iron pipe undisturbed with uncapped top 1" above existing grade. He carefully pulled the 30" long iron pipe and reset corner location with a standard 2" dia. by 30" long aluminum pipe monument with stamped Oneida County cap 2" above grade. He also found top of an old cut off 4" dia. wood post nearly flush with grade 6" NE of the corner. I left old iron pipe and part of an old "U" channel steel post found along south side of new monument set. Corner is 155' or so North of Blue Jay Road bend at existing driveway entrance to Fire No. 6741, the Rev. Kenneth Roufs owner, who directly witnessed this corner recovery.

Sept. 2002 I found monument set by William C. Rhode in 1999 pipe bent and cap broken off. I replaced with Oneida County 2" dia. aluminum pipe, with 3 1/4" dia. tablet stamped as shown. Bearing trees are in good order as shown on survey monument record by William C. Rhode, dated September 6, 1999, Indx C9.

(c)(d)(e) Plan view of corner with ties to at least 4 witness monuments. If in disagreement with previously established corner, show the distances between the two corners and also indicate the ties to the disputed corner.



(i) I, Dennis B. Roberts, Registered Land Surveyor *S-1863 hereby certify that the corner location on this record was determined by me or under my direction and control and that this U.S. Public Land Survey Monument Record is correct and complete to the best of my knowledge and belief.



Dennis B. Roberts
 Signature

9-2
 Date

360805 2000

Index No. C 9