

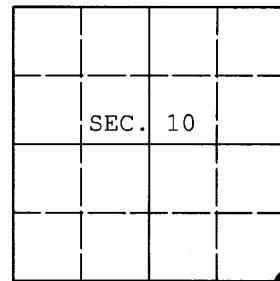
JAN 12 2016

AT _____ O'CLOCK _____ M
KYLE J. FRANSON
REGISTER OF DEEDS

U.S. PUBLIC LAND SURVEY MONUMENT RECORD

Note: This form is intended and designed to fulfill all requirements of Wisconsin Administrative Code, Chapter A-E 7.08 U.S. Public Land Survey Monument Record (3) (a) (b) (c) (d) (e) (f) (g) (h) (i). An additional sheet may be added if necessary to conform with said requirements.

(a) CORNER LOCATION: WISCRS - Oneida County
Cor. of Secs. 10, 11, 14 & 15 N: 156,026.35 USft
Township 36 North E: 249,266.96 USft
Range 8 East of the 4th P.M. Datum: NAD 1983(2011)
Town of Crescent County of Oneida



(b) HISTORY OF ORIGINAL CORNER ESTABLISHMENT

Original Surveyor: William E. Daugherty Original Accessories:
Date of Survey: Commenced: July 6, 1863 tamarack 10 S29°W, 19 lks.
Completed: July 16, 1863 tamarack 8 N12°W, 19 lks.

(b) (f) (g) (h) Description of monument found at this corner and if it was accepted, state all evidence (material, testimonial, occupational, plats, records, other monuments) used as a basis for accepting. If not accepted or if nothing was found, state evidence used as a basis for establishing location. If re-established through lost corner proportionate methods, indicate all monuments, distances and directions used to establish. Indicate type of monument and sign post found or set.

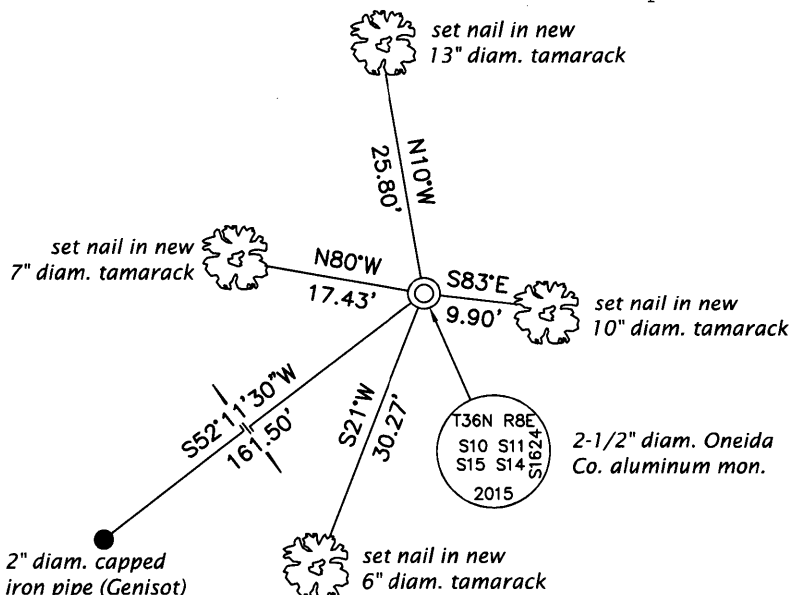
February, 1935: OCS Map No. B-2846 by Ray Hall. Hall notes "NW BT stp. OK, SW BT stp. burnt."

February 28, 1967: Field notes by Rhinelander Paper Co. (RIPCO): "When we arrived at the section corner began to search for evidence of any old work and located an old FOREST SERVICE marker in a black spruce swamp. We dug out a very old squared post 2-1/2 ft. below swamp level and the old point. This is N49°41'42"E, 2.448 chains from the pipe set by Genisot."

October 25, 2015: I found and accepted a 1-3/4" diam. iron pipe in the location described by RIPCO. In its place, I set a 2-1/2" diam., 60" long aluminum pipe with a 3-1/4" diam. Oneida Co. aluminum cap projecting 12" above the bog surface. I found or established accessories as shown below and set a white plastic sign post bearing Northeast, 1 ft. dist. The following maps filed in the office of the county surveyor adopted the RIPCO location: A-415, A-416, C-765, C-774, C-856. I also found the monument set by Genisot, as shown below.

The coordinates shown were derived from two independent RTK observations of the corner point and are referenced to the WISCORS GNSS Network.

(c) (d) (e) Plan view of corner with ties to at least 4 witness monuments. If in disagreement with previously established corner, show the distances between the two corners and also indicate the ties to the disputed.



(i) I, Michael J. Romportl, Professional Land Surveyor No. S-1624, hereby certify that the corner location on this record was determined by me or under my direction and control and that this U.S. Public Land Survey Monument Record is correct and complete to the best of my knowledge and belief.

Michael J Romportl 12/31/2015
Signature Date