



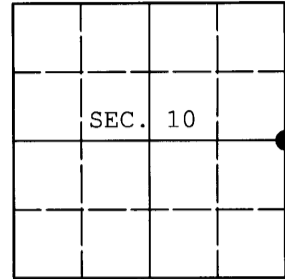
JAN 12 2016

AT \_\_\_\_\_ O'CLOCK \_\_\_\_\_ M  
KYLE J. FRANSON  
REGISTER OF DEEDS

**U.S. PUBLIC LAND SURVEY MONUMENT RECORD**

Note: This form is intended and designed to fulfill all requirements of Wisconsin Administrative Code, Chapter A-E 7.08 U.S. Public Land Survey Monument Record (3) (a) (b) (c) (d) (e) (f) (g) (h) (i). An additional sheet may be added if necessary to conform with said requirements.

(a) CORNER LOCATION: WISCRS - Oneida County  
1/4 Cor. of Secs. 10 & 11 N: 158,661.01 USft  
Township 36 North E: 249,067.89 USft  
Range 8 East of the 4th P.M. Datum: NAD 1983(2011)  
Town of Crescent County of Oneida



(b) HISTORY OF ORIGINAL CORNER ESTABLISHMENT

Original Surveyor: \_\_\_\_\_ Original Accessories: \_\_\_\_\_  
Date of Survey: Commenced: \_\_\_\_\_  
Completed: \_\_\_\_\_

(b) (f) (g) (h) Description of monument found at this corner and if it was accepted, state all evidence (material, testimonial, occupational, plats, records, other monuments) used as a basis for accepting. If not accepted or if nothing was found, state evidence used as basis for establishing location. If re-established through lost corner proportionate methods, indicate all monuments, distances and directions used to establish. Indicate type of monument and sign post found or set.

*This is a perpetuation of a previous USPLS Monument Record by William E. Badow, RLS dated February 1, 1991 and filed in the office of the Oneida County Register of Deeds. A complete history of the corner can be found on the previous monument record. I accept the previous location as a true and faithful perpetuation or reestablishment of the original corner location and further perpetuate it as follows.*

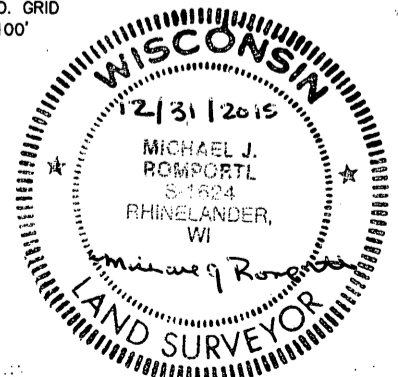
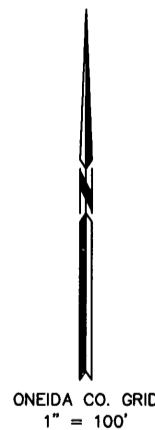
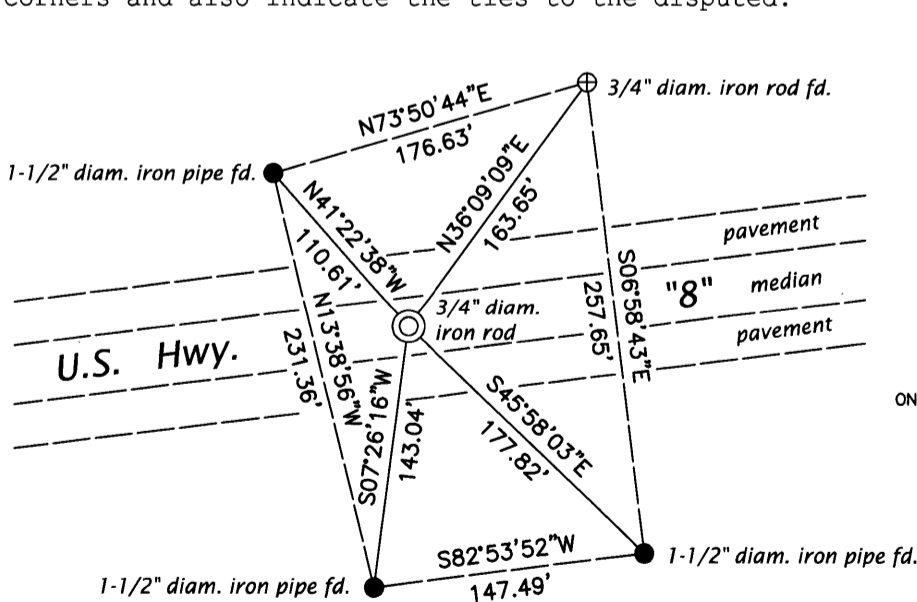
1997: Aero-Metric finds "Oneida Co. Cap" described by Badow and determines county coordinates using static GPS.

November 13, 2002: WISDOT survey record by Charles L. Oleinik, RLS indicates he "found 1-1/2" iron pipe since destroyed by construction." Measurements to the four reference monuments I used below were taken at this time.

November 1, 2015: I found the four reference monuments described on the WISDOT record. It is apparent that the location of the iron pipe used by Oleinik does not agree with the location measured by Aero-Metric. Being that WISDOT found a monument of unknown origin not consistent with the record, I established the corner at the location determined by Aero-Metric. In the grass median of U.S. Highway 8, I set a 3/4" diam., 24" long iron rod flush with the ground surface. The WISDOT location bears South, 0.5 ft. I measured existing accessories as shown below and found a WISDOT R/W post at each reference monument.

The coordinates shown were derived from two independent RTK observations of the corner point and are referenced to the WISCORS GNSS Network.

(c) (d) (e) Plan view of corner with ties to at least 4 witness monuments. If in disagreement with previously established corner, show the distances between the two corners and also indicate the ties to the disputed.



(i) I, Michael J. Romportl, Professional Land Surveyor No. S-1624, hereby certify that the corner location on this record was determined by me or under my direction and control and that this U.S. Public Land Survey Monument Record is correct and complete to the best of my knowledge and belief.

*Michael J. Romportl*  
Signature

12/31/2015  
Date