

# U.S. PUBLIC LAND SURVEY MONUMENT RECORD

Note: This form is intended and designed to fulfill all requirements of Wisconsin Administrative Code, Chapter A-E 5.02, U.S. Public Land Survey Monument Record (3) (a) (b) (c) (d) (e) (f) (g) (h) (i). An additional sheet may be added if necessary to conform with said requirements.

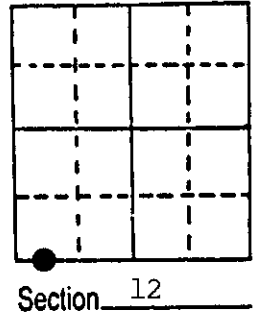
(a) Corner location: Township 36 North

Range 8 East

Town Crescent

County Oneida

Meander Corner  
Left bank of  
Wisconsin River  
Section 12



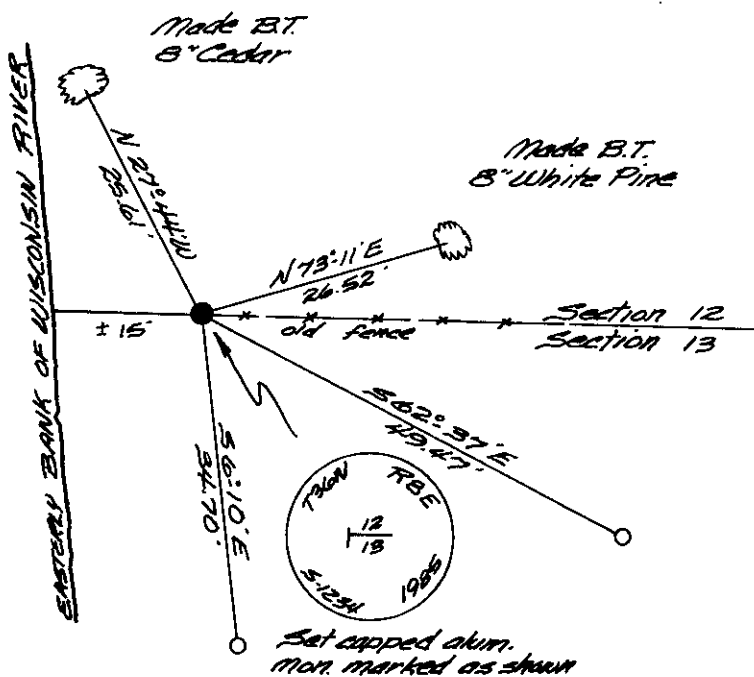
(b) (f) (g) (h) Description of monument found at this corner and if it was accepted, state all evidence (material, testimonial, occupational, plats, records, other monuments) used as a basis for accepting. If not accepted or if nothing was found, state evidence used as basis for establishing location. If reestablished through lost corner proportionate methods, indicate all monuments, distances and directions used to establish.

July, 1863 - William E. Daugherty, Deputy Surveyor - Set Meander post Original bearing trees: Birch 8" N14°E, 22 lks.; Cedar 10" S11°E, 35 lks.

May 1898 - B. F. Dorr, Oneida County Surveyor - Plat recorded in Vol. 2, Pg. 4 indicates Meander Corner in existence.

September 6, 1985 - Dorr's position for Meander Corner is now located in bed of the Wisconsin River artificially raised by Hat Rapids Dam. I accept the remains of an old down East-West fence as the best remaining evidence of the Section line and set a capped 2" dia. x 30" long aluminum monument 15 feet from the existing river bank.

(c) (d) (e) Plan view of corner with ties to at least 4 witness monuments. If in disagreement with previously established corner, show the distances between the two corners and also indicate the ties to the disputed corner.

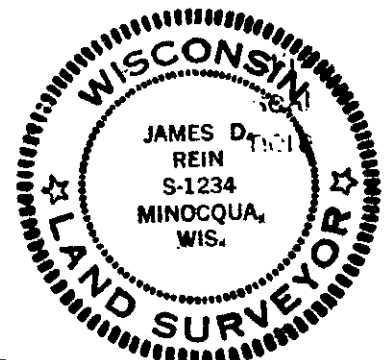


Scale 1" = 20'  
O = Reference monument set, 3/4" dia. x 24" long iron pipe.  
Distance measurements to B.T.'s made to an aluminum nail set in root crown on side of tree.

(i) I, James D. Rein, Reg. Land Surveyor No. S-1234  
(type or print name) certify that the corner location on this record was determined by me or under my direction and control and that this U.S. Public Land Survey Monument Record is correct and complete to the best of my knowledge and belief.

James D. Rein  
Signature

October 19, 1985  
Date



Index No. 5-21

3608120039