

CERTIFIED LAND CORNER RESTORATION

U.S. Public Land Survey Monument Record

State of Wisconsin

County of Oneida

ss.

I William Innich, do hereby certify that on the 15 day of July, 1982, I found evidence of the Northwest corner of Section 24 Township 36 North, Range 8 East, Fourth Principal Meridian, as described hereon; and that from this evidence I established a new monument and accessories as described hereon to perpetuate the original location of this corner.

Description of original monument and accessories and subsequent restorations:

1863 William E. Daugherty Government Surveyor Set Post at 80.00 to Sections 23-24-13-14 Bts. Spruce 7 N 59 W 15lk. Aspen 10 S 54 E 12 lk.

1901 Vaughan found corner in center of road

1906 Dorr found corner Bts. Y. Pine S 7 1/2 W 61 1/2 lk. Spruce 10 N 36 E 65lk.

1950 Wincentzen measured from N.W. corner of N 1/4 corner 2646.93

1957 Highway Dept shows corner 60' from centerline S.T.H. 17

Description of corner evidence found:

No monument was found, set corner from highway map and then checked ditances to adjacent corners .

(see reverse side)

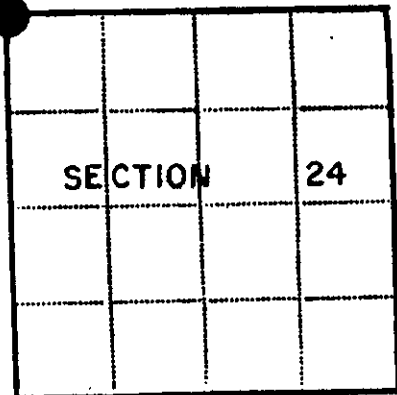


Description of monument and accessories I established to perpetuate the location of this corner:

Set Oneida County Monument stamped as shown Made new witness

J. Pine 6 N 6° 40' W 27.15' dist. to P.K. in blaze Power pole # 3608-14R 12 N 69 W 30.23 dist. to P.K. in North side Centerline State Trunk Highway 17 East 60.80'

This is a copy, original is apparently lost or misplaced mqr 6/6/88



● - Corner monument restored
□ -

Resident witnesses _____

Dated at Rhinelander Wisconsin, this 15 day of December, 1982

Signature *William Innich* Title Registered Land Surveyor
(County Surveyor, Registered Land Surveyor, or other duly authorized official)

Surveyors Registration No. 1383

Office of _____ County of _____

I hereby certify that the within instrument was filed in this office for record on the _____ day of _____, 19____, and was filed in Book, No. _____ Page No. _____ of County Records.

Signature _____ Title _____

Township 36 North, Range 8 East, Section 24, Index No. _____, Page No. _____

3608/40000

2121

Stock No. 26273

1/4 COR

1323.16

FOUND 1/16 CORNER 2.78' NORTH

2651.88

1328.72

60.80' ±

STATE 60' ±

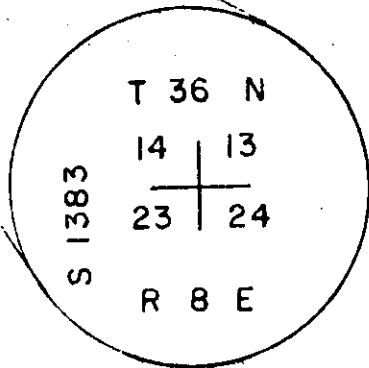
1/4 COR.

2650.15

2646.93' F.R.W.

5278.42

S.W. COR.



REGISTER OF DEEDS OFFICE
ONEIDA COUNTY, WIS.

FILED
JUN 8 1990

At 8:40 O'Clock
DORIS VERAGE KUEHN
REGISTER OF DEEDS

U.S. PUBLIC LAND SURVEY MONUMENT RECORD

Note: This form is intended and designed to fulfill all requirements of the Wisconsin Administrative Code, Chapter A-E 7.08 U.S. Public Land Monument Record (3)(a)(b)(c)(d)(e)(f)(g)(h)(i). An additional sheet may be added if necessary to conform with said requirements.

REGISTER OF DEEDS OFFICE
ONEIDA COUNTY
FILED

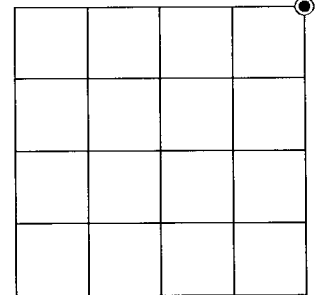
FEB 06 2020

KYLE J. FRANSON
REGISTER OF DEEDS

(a) CORNER LOCATION: WISCRS - Oneida County
 Northeast Corner of Section 23 North: 150403.165 US ft
 Township 36 North East: 254487.181 US ft
 Range 8 East Datum: NAD 83(2011)
 Town of Crescent GNSS Method: RTK - Direct
 County of Oneida GNSS Control: WISCRS VRS
 Record North: 150403.126 US ft
 Record East: 254487.156 US ft
 Record Datum: NAD 83(1991)

(RECORDING AREA)

SECTION 23



(b) HISTORY OF ORIGINAL CORNER ESTABLISHMENT
 Original Surveyor:
 Date of Survey: Commenced *SEE PREVIOUS U.S.P.L.S. MONUMENT*
 Completed *RECORD DATED DECEMBER 15, 1982.*
 Original B.T.'S

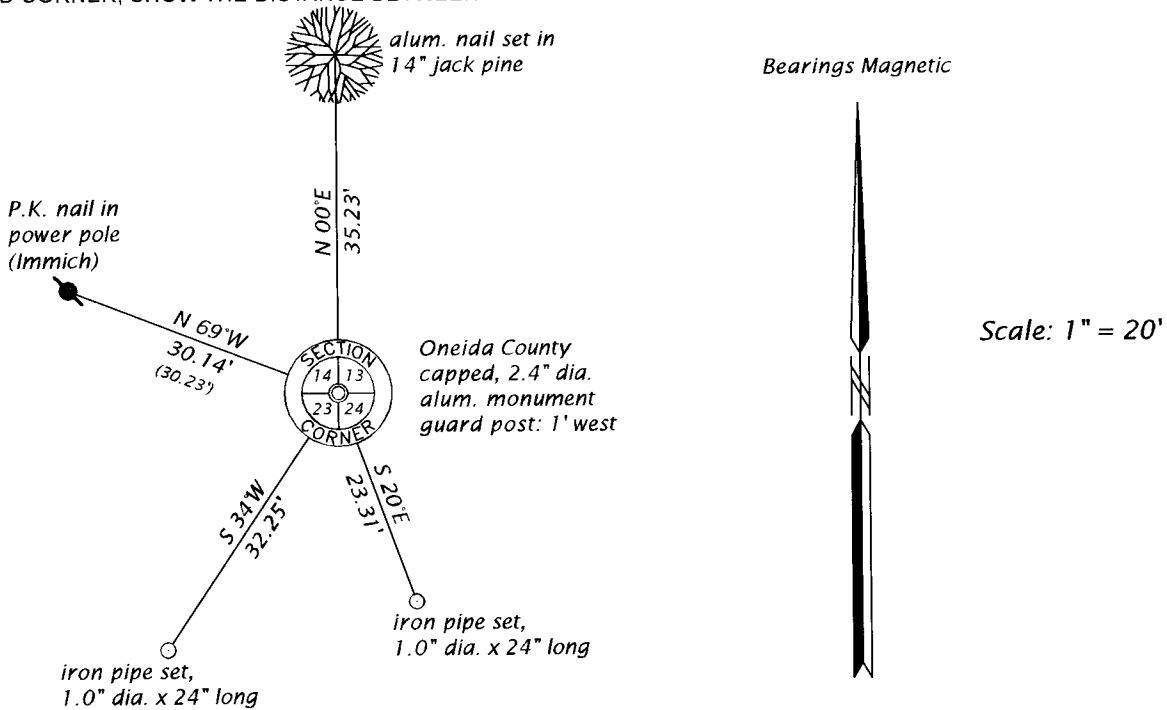
(f)(g)(h) DESCRIPTION OF MONUMENT FOUND AT THIS CORNER AND IF IT WAS ACCEPTED, STATE ALL EVIDENCE (MATERIAL, TESTIMONIAL, OCCUPATIONAL, PLATS, RECORD, OTHER MONUMENTS) USED AS A BASIS FOR ESTABLISHING LOCATION. IF NOT ACCEPTED OR IF NOTHING WAS FOUND, STATE EVIDENCE USED AS BASIS FOR ESTABLISHING LOCATION. IF REESTABLISHED THROUGH LOST CORNER PROPORTIONATE METHODS, INDICATE ALL MONUMENTS, DISTANCES AND DIRECTIONS USED TO ESTABLISH. INDICATE TYPE OF MONUMENT AND SIGN POST FOUND OR SET.

This is a perpetuation of a previous U.S.P.L.S. Monument Record by William Immich, RLS, dated December 15, 1982, and filed in the office of the Oneida County Register of Deeds. A complete history of the corner can be found on the previous monument record. I accept the previous location as a true and faithful perpetuation or reestablishment of the original corner location and further perpetuate it as follows.

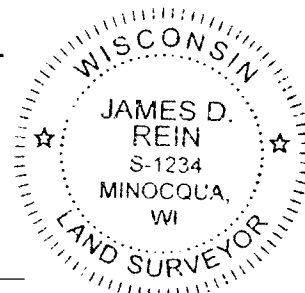
May 13, 2019, I, James D. Rein, P.L.S. No. S-1234, found and accepted the capped Oneida County aluminum monument set by Immich. We also recovered the power pole he used as a witness - see below for updated witnesses.

The coordinate value shown has been verified by at least one of the following methods: 1) comparison to a previously GPS determined published value; 2) the value is the average of two or more GPS observations at a markedly different time; 3) one or more distances were measured back to the GPS observed corner from temporary GPS observed offset locations.

(c)(d)(e) PLAN VIEW OF CORNER WITH TIES TO AT LEAST 4 WITNESS MONUMENTS. IF IN DISAGREEMENT WITH PREVIOUSLY ESTABLISHED CORNER, SHOW THE DISTANCE BETWEEN THE TWO CORNERS AND ALSO INDICATE THE TIES TO THE DISPUTED CORNER.



(i) I, JAMES D. REIN, PROFESSIONAL LAND SURVEYOR NO. S-1234 HEREBY CERTIFY THAT THE CORNER LOCATION ON THIS RECORD WAS DETERMINED BY ME OR UNDER MY DIRECTION AND CONTROL AND THAT THIS U.S. PUBLIC LAND SURVEY MONUMENT RECORD IS CORRECT AND COMPLETE TO THE BEST OF MY KNOWLEDGE AND BELIEF.



James D. Rein
 SIGNATURE DATE 10-05-19

INDEX NO. *N - 21*
 3608140000