

CERTIFIED LAND CORNER RESTORATION

State of Wisconsin }  
County of Oneida } ss.

I William Immich, do hereby certify that on the 13th day of Dec., 19 81, I found evidence of the West 1/4 corner corner of Section 13 Township 36 North, Range 8 East, Fourth Principal Meridian, as described hereon; and that from this evidence I established a new monument and accessories as described hereon to perpetuate the original location of this corner:

Description of original monument and accessories and subsequent restorations:

William Daugherty Government Surveyor 1863

North between 13 & 14 40.00 set 1/4 post Tam. 12 N 80 E 18  
Birch 7 N 51 1/2 W 9

1894 B.F. Dorr subdivided Section 13

1957 H. Moore set 1/16 corner south of 1/4 corner

1979 D. Stella tied survey to corner

1979 R. Boniville tied Certified Survey in Section 14 to corner  
calls for iron pipe.

Description of corner evidence found:

1979 W. Immich subdivided Section 13 found 3/4" iron pipe fit Dorrs section subdivision good, tied to 1/16 corner south fit Moore and Boniville distance of 1320 good.

Description of monument and accessories I established to perpetuate the location of this corner:

found 3/4" iron pipe replaced with aluminum county marker stamped as shown. Corner falls in east edge of swamp from Wisconsin River fence line running east pipe at corner of fence.

made new b.t. cedar 4" N 80 E 3.95'  
cedar 5" N 3 E 43.12'  
spruce 7" S 34 W 41.57'  
left bank Wisconsin River West 186'

T 36 N

S 14 \* S 13

R 8 E

S - 1383



*Corner data checked with record & accepted as correct by Robert H. Stewart, Oneida County Surveyor*

Resident witnesses.....

Dated at Rhineland Wisconsin, this 13 day of Dec. 19 81.

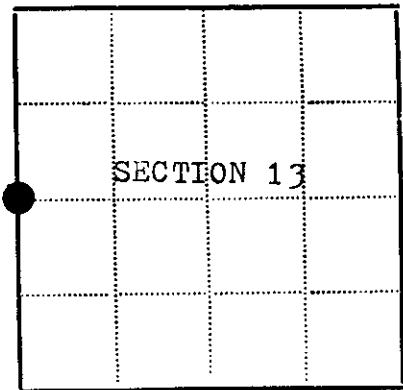
Signature William Immich Title R.L.S.  
(County Surveyor, Registered Land Surveyor, or other duly authorized official)

Surveyors Registration No. 1383

Office of Oneida County of Oneida

I hereby certify that the within instrument was filed in this office for record on the 25th day of August 19 82 and was filed in Book No. .... Page No. .... of County Records.

Signature Doris Verage Kuehn Title Register of Deeds



● - Corner monument restored

□ -

Township....., Range....., Section....., Index No....., Page No.....

3608142000

12-7

# U.S. PUBLIC LAND SURVEY MONUMENT RECORD

Note: This form is intended and designed to fulfill all requirements of the Wisconsin Administrative Code, Chapter A-E 7.08 U.S. Public Land Monument Record (3)(a)(b)(c)(d)(e)(f)(g)(h)(i). An additional sheet may be added if necessary to conform with said requirements.

REGISTER OF DEEDS OFFICE  
ONEIDA COUNTY  
FILED

JAN 13 2021

KYLE J. FRANSON  
REGISTER OF DEEDS

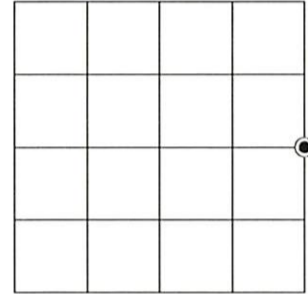
(a) CORNER LOCATION:

East Quarter Corner of Section 14  
Township 36 North  
Range 8 East  
Town of Crescent  
County of Oneida

North:  
East:  
Datum:  
GNSS Method:  
GNSS Control:

(RECORDING AREA)

SECTION 14



(b) HISTORY OF ORIGINAL CORNER ESTABLISHMENT

Original Surveyor:  
Date of Survey: Commenced  
Completed  
Original B.T.'S

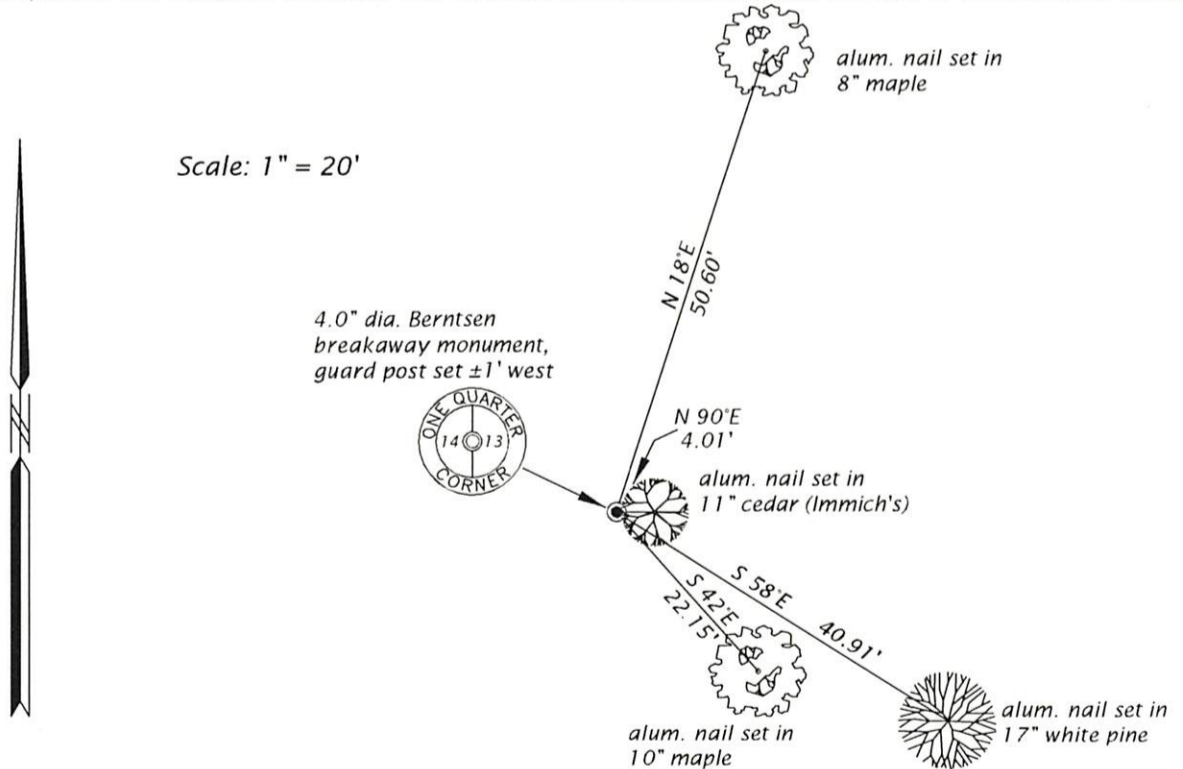
SEE PREVIOUS U.S.P.L.S. MONUMENT  
RECORD DATED DECEMBER 13, 1981.

(f)(g)(h) DESCRIPTION OF MONUMENT FOUND AT THIS CORNER AND IF IT WAS ACCEPTED, STATE ALL EVIDENCE (MATERIAL, TESTIMONIAL, OCCUPATIONAL, PLATS, RECORD, OTHER MONUMENTS) USED AS A BASIS FOR ESTABLISHING LOCATION. IF NOT ACCEPTED OR IF NOTHING WAS FOUND, STATE EVIDENCE USED AS BASIS FOR ESTABLISHING LOCATION. IF REESTABLISHED THROUGH LOST CORNER PROPORTIONATE METHODS, INDICATE ALL MONUMENTS, DISTANCES AND DIRECTIONS USED TO ESTABLISH. INDICATE TYPE OF MONUMENT AND SIGN POST FOUND OR SET.

This is a perpetuation of a previous U.S.P.L.S. Monument Record by William G. Immich, RLS, dated December 13, 1981, and filed in the office of the Oneida County Register of Deeds. A complete history of the corner can be found on the previous monument record. I accept the previous location as a true and faithful perpetuation or reestablishment of the original corner location and further perpetuate it as follows.

December 23, 2020 - James D. Rein, P.L.S. No. S-1234, we found, and I accepted a 4.0" dia. Berntsen breakaway monument at the corner position. We also recovered Immich's easterly cedar bearing tree, his other bearing trees are now gone. See below for updated witnesses.

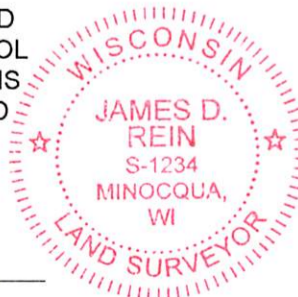
(c)(d)(e) PLAN VIEW OF CORNER WITH TIES TO AT LEAST 4 WITNESS MONUMENTS. IF IN DISAGREEMENT WITH PREVIOUSLY ESTABLISHED CORNER, SHOW THE DISTANCE BETWEEN THE TWO CORNERS AND ALSO INDICATE THE TIES TO THE DISPUTED CORNER.



(i) I, JAMES D. REIN, PROFESSIONAL LAND SURVEYOR NO. S-1234 HEREBY CERTIFY THAT THE CORNER LOCATION ON THIS RECORD WAS DETERMINED BY ME OR UNDER MY DIRECTION AND CONTROL AND THAT THIS U.S. PUBLIC LAND SURVEY MONUMENT RECORD IS CORRECT AND COMPLETE TO THE BEST OF MY KNOWLEDGE AND BELIEF.

*James D. Rein*  
SIGNATURE

12-31-20  
DATE



INDEX NO. L - 21  
3608142000