

U. S. PUBLIC LAND SURVEY MONUMENT RECORD

INSTRUCTIONS: This record shall show the location of the corner and shall include all of the following nine elements (a through i).

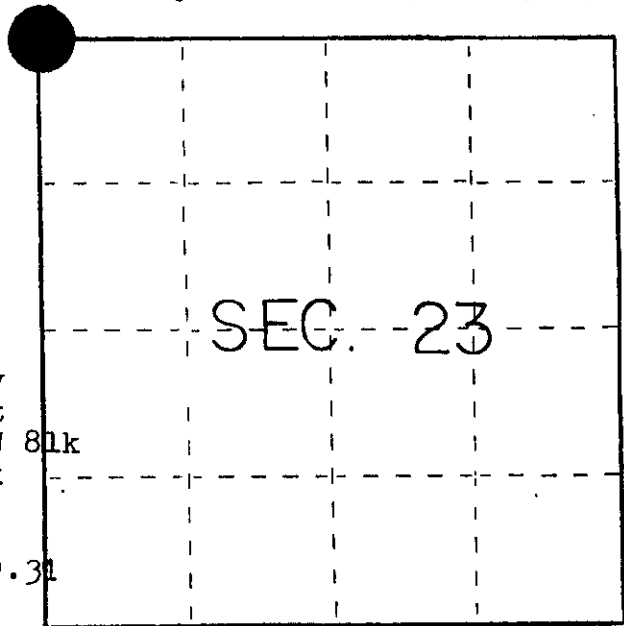
(a) Identify the corner by reference to the U.S. public land survey system.

○ = Corner monument restored.

SECTION CORNER COMMON TO
SECTIONS 14, 15, 22 and 23
Township 36 North, Range 8 East
Fourth Principal Meridian
Oneida County, Wisconsin

1863 Government Survey W. Daugherty
North bet 22 and 23, 80.00 set post
to Sec 14, 15, 22 & 23 Birch 10 N 51 W 81k
He. 8 S38E 121k

1905 D.H. Vaughn ran from M.C. bet
14 and 23 West in 2 feet of snow 39.31
chains.



Only surveys of record.

(b) Describe any record evidence, monument evidence, occupational evidence, testimonial evidence or any other material evidence you considered, and whether the monument was found or placed.

Found 4" x 4" square wood post (best available evidence of corner)
origin of post unknown
Found bearing tree scribed White pine 19" N 2° 30' W 33.73 feet
origin of bearing tree unknown

Set aluminum capped Oneida County Monument stamped as shown

(c) In the plan view drawing below, provide reference ties to at least 4 witness monuments, or, if the location is within a municipality, to at least 2 witness monuments. (Witness monuments shall be made of concrete, natural stone, iron or other equally durable material.)
Describe witness monuments.

(d) Show a plan view drawing depicting the relevant monuments and reference ties which is sufficient in detail to enable accurate relocation of the corner monument if the corner monument is disturbed. Indicate north.

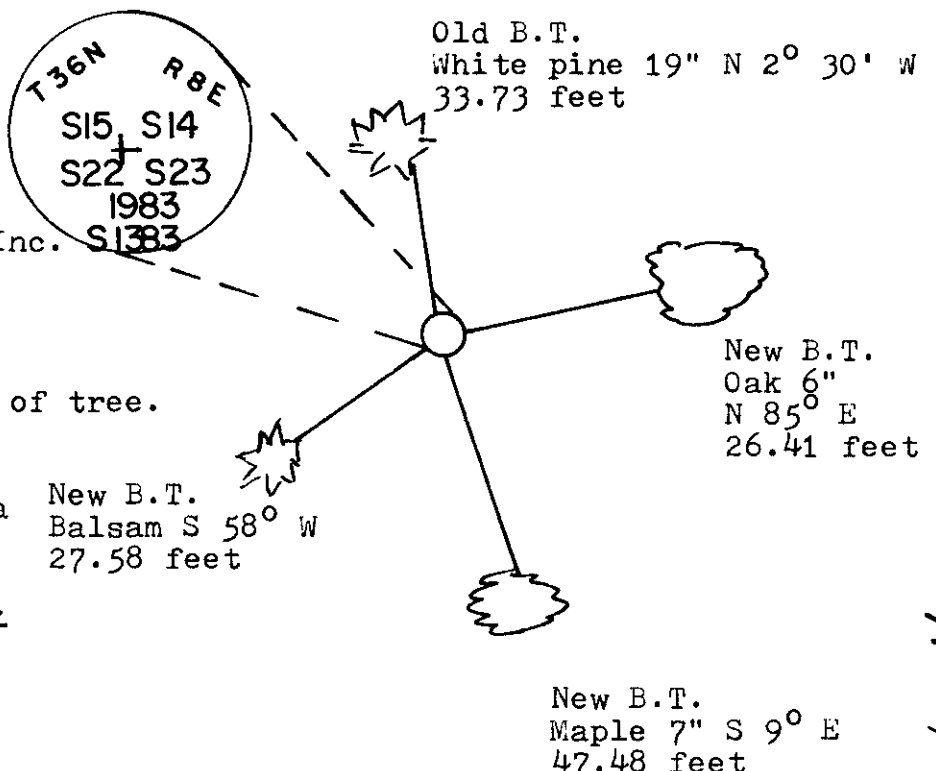
See Genisot and Associate Inc.
Map No. 7446

Bearings mag.

Distances to spike in side of tree.

Compared with all record data
and accepted as correct.

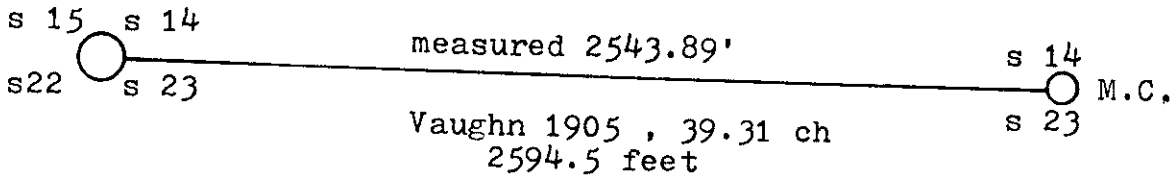
Robert H. Wimal 18 JAN 84
Oneida County Surveyor date



3608150000

N-17

(e) Describe any material discrepancy between the location of the corner as restored or reestablished and the location of that corner as previously restored or reestablished by distance and direction. Show the discrepancy on the plan view drawing under (d), above. Show the distances between the corner as previously restored or reestablished and (1) the corner as restored or reestablished, and (2) to at least 2 of the witness monuments shown on the drawing in (d), above.



(f) Was the corner restored through acceptance of (1) an obliterated evidence location, or, (2) a found perpetuated location?

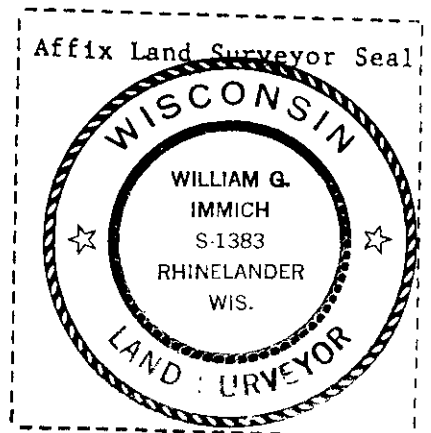
A found perpetuated location

(g&h) Was the corner reestablished through lost corner proportionate methods? If so, show the method, including the directions and distances to other public land survey corners used as evidence or used for proportioning in determining the corner location?

no

REGISTERS OFFICE }
 Oneida County, Wis. }

Received for Record the 18th day of
January A.D. 1984 at
10⁰⁰ o'clock A M. and recorded in
 Vol. _____ on page _____
Doris Verage Kuehn
 Registrar



(1) I, William Immich
 (type or print name) certify that the corner location shown
 on this record was determined by me or under my direction and
 control and that this U.S. Public Land Survey Monument Record is
 correct and complete to the best of my knowledge and belief.

William Immich
 Signature

Oct 18, 1983
 Date