

U.S. PUBLIC LAND SURVEY MONUMENT RECORD

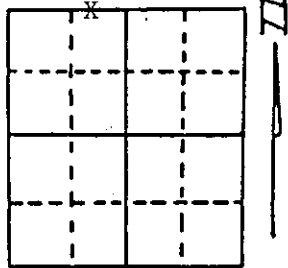
Note: This form is intended and designed to fulfill all requirements of Wisconsin Administrative Code, Chapter A-E 5.02, U.S. Public Land Survey Monument Record (3) (a) (b) (c) (d) (e) (f) (g) (h) (i). An additional sheet may be added if necessary to conform with said requirements.

(a) Corner location: Township 36 North

Range 8 East/West

Town/City/Village Crescent

County Oneida



Section 22

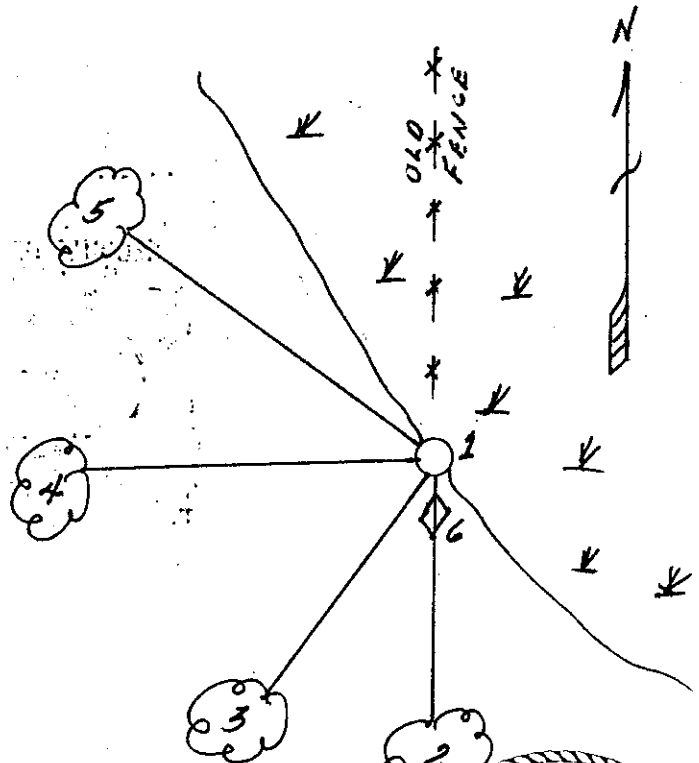
(b) (f) (g) (h) Description of monument found at this corner and if it was accepted, state all evidence (material, testimonial, occupational, plats, records, other monuments) used as a basis for accepting. If not accepted or if nothing was found, state evidence used as basis for establishing location. If reestablished through lost corner proportionate methods, indicate all monuments, distances and directions used to establish.

- 1863 - Wm. Daugherty established this corner on west shore of lake and set wood post. White Pine, N62°W, 29 1/2 links
- 1900 - Vaughan perpetuated this corner from remains of original BT.
- 1946 - Lytle perpetuated this corner and made new BT, 25" White Pine, S61°W, 6 links.
- 1974 - GLO found Lytles BT and set a 2 1/2" x 30" iron pipe with brass cap and made two BTs:
12" Hemlock, S24°W, 56 links (36.96') 11" White Pine, N69°W, 64 links (42.24')
- 1988 - Milo E. Stefan found GLO monument for M.C. in excellent condition with BTs:
25" White Pine Snag, S69°W, 3.96'
14" White Pine, S24°W, 39.45' *NOTE different species and distance in error
11" White Pine, N69°W, 42.59'

(c) (d) (e) Plan view of corner with ties to at least 4 witness monuments. If in disagreement with previously established corner, show the distances between the two corners and also indicate the ties to the disputed corner.

- 1 - GLO brass cap on 2 1/2" iron pipe
- 2 - 16" Hemlock, South, 27.35'
- 3 - 14" White Pine, S24°W, 39.45'
- 4 - 12" White Pine, S88°W, 25.31'
- 5 - 12" White Pine, N69°W, 42.59'
- 6 - Plastic Sign Post, South, 2.1'

Note: BTs distances to nail in side of trees.
BTs scribed "MC SxxBT"



(i) I, Milo E. Stefan

(type or print name) certify that the corner location on this record was determined by me or under my direction and control and that this U.S. Public Land Survey Monument Record is correct and complete to the best of my knowledge and belief.

Milo E. Stefan Signature 1/4/89 Date

REV 5-19-2016

3608150020

3608150021



Index No. N-15

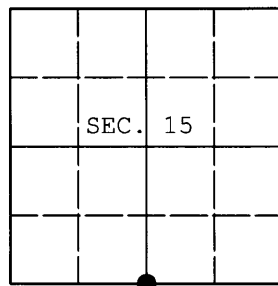
JAN 12 2016

AT O'CLOCK M
KYLE J. FRANSON
REGISTER OF DEEDS

U.S. PUBLIC LAND SURVEY MONUMENT RECORD

Note: This form is intended and designed to fulfill all requirements of Wisconsin Administrative Code, Chapter A-E 7.08 U.S. Public Land Survey Monument Record (3) (a) (b) (c) (d) (e) (f) (g) (h) (i). An additional sheet may be added if necessary to conform with said requirements.

(a) CORNER LOCATION: WISCRS - Oneida County
1/4 Cor. of Secs. 15 & 22 N: 150,481.38 USft
Township 36 North E: 246,357.47 USft
Range 8 East of the 4th P.M. Datum: NAD 1983(2011)
Town of Crescent County of Oneida



(b) HISTORY OF ORIGINAL CORNER ESTABLISHMENT

Original Surveyor: Original Accessories:
Date of Survey: Commenced:
Completed:

(b) (f) (g) (h) Description of monument found at this corner and if it was accepted, state all evidence (material, testimonial, occupational, plats, records, other monuments) used as a basis for accepting. If not accepted or if nothing was found, state evidence used as basis for establishing location. If re-established through lost corner proportionate methods, indicate all monuments, distances and directions used to establish. Indicate type of monument and sign post found or set.

This is a perpetuation of a previous USPLS Monument Record by Milo E. Stefan, RLS dated January 4, 1989 and filed in the office of the Oneida County Register of Deeds. A complete history of the corner can be found on the previous monument record.

History supplementing that of Stefan:

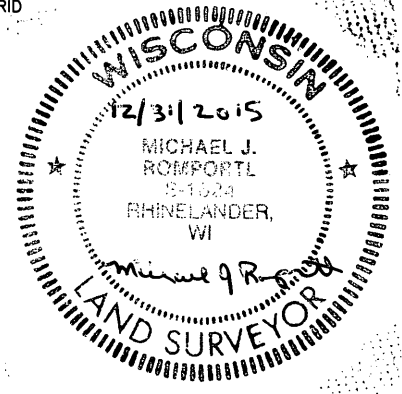
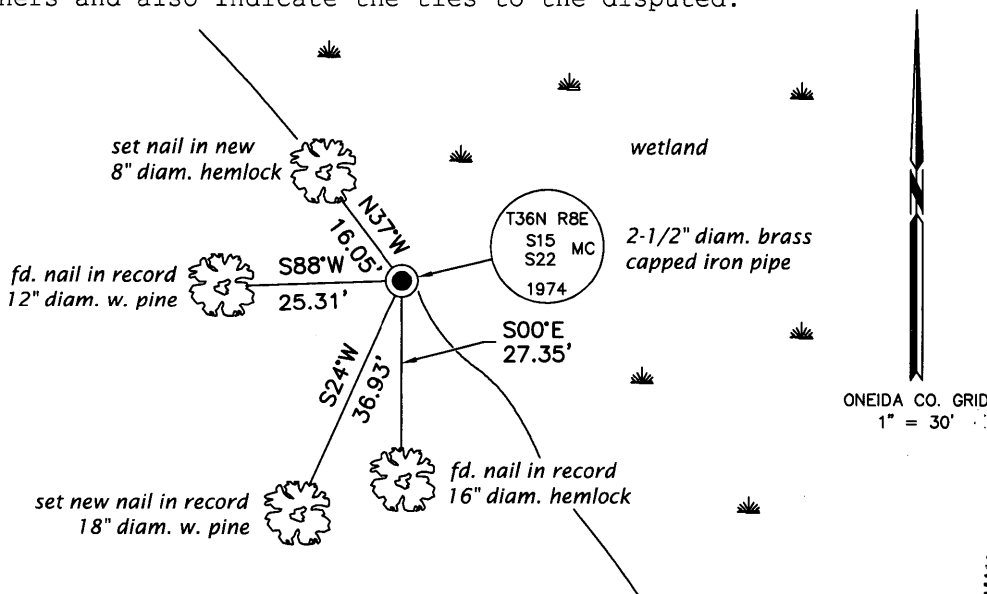
November 20, 1898: Notes by Dorr in old fieldbook 11 on page 52. "S. 1/4 P. M.C. trees are marked 1/4 S. stand on the bank of wet marsh. Stake in marsh 20 to 30 rods W. of lake but are evidently intended for S. 1/4 P."

February 1, 1989: OCS Map No. L-356 contains a letter from BLM addressing a question posed by surveyor Stefan regarding GLO surveyor Daugherty's failure to set a quarter-section corner near this location.

October 19, 2015: I found and accepted Stefan's monument, a 2-1/2" diam. iron pipe with a BLM brass cap. For the purposes of subdividing Sec. 15, I accept this location as the quarter-section cor. for the following reasons. It is apparent that Daugherty intended this corner to be the quarter-section cor. as his bearing trees were marked as such. Also, in retracing the section line to the West, it is apparent that the long-standing monument at the West 1/16th cor. was set using this corner as the quarter-section cor. I found or established accessories as shown below and found a white plastic sign post adjacent to the monument.

The coordinates shown were derived from two offset RTK observations of the corner point and are referenced to the WISCRS GNSS Network.

(c) (d) (e) Plan view of corner with ties to at least 4 witness monuments. If in disagreement with previously established corner, show the distances between the two corners and also indicate the ties to the disputed.



(i) I, Michael J. Romportl, Professional Land Surveyor No. S-1624, hereby certify that the corner location on this record was determined by me or under my direction and control and that this U.S. Public Land Survey Monument Record is correct and complete to the best of my knowledge and belief.

Michael J. Romportl 12/31/2015
Signature Date