

This form is intended to fulfill the requirements of Chapter A-E 7.08 (3)(a) thru (i) U.S. Public Land Survey Monument Location Record, Wisconsin Administrative Code. Use the reverse side of form for continuation.

U.S. PUBLIC LAND SURVEY MONUMENT LOCATION RECORD

USPLS CORNER: NORTH WITNESS MC SECTION: 17 TOWNSHIP: 36 NORTH RANGE: 8 EAST

NAME OF WATERWAY FOR M.C. CORNER: CRESCENT LAKE SECTION LINE: WEST

~~(CITY)(VILLAGE)(TOWN)~~ OF: CRESCENT COUNTY OF: ONEIDA

Description of monument found or placed and all other evidence used as the basis for monument location; including monuments and related measurements required if the corner location was reestablished by lost corner proportionate methods. Also indicate name of original surveyor, original survey date and the corner monument, bearing trees, witness or other reference monuments established; including measured bearing and distance ties, from available records.

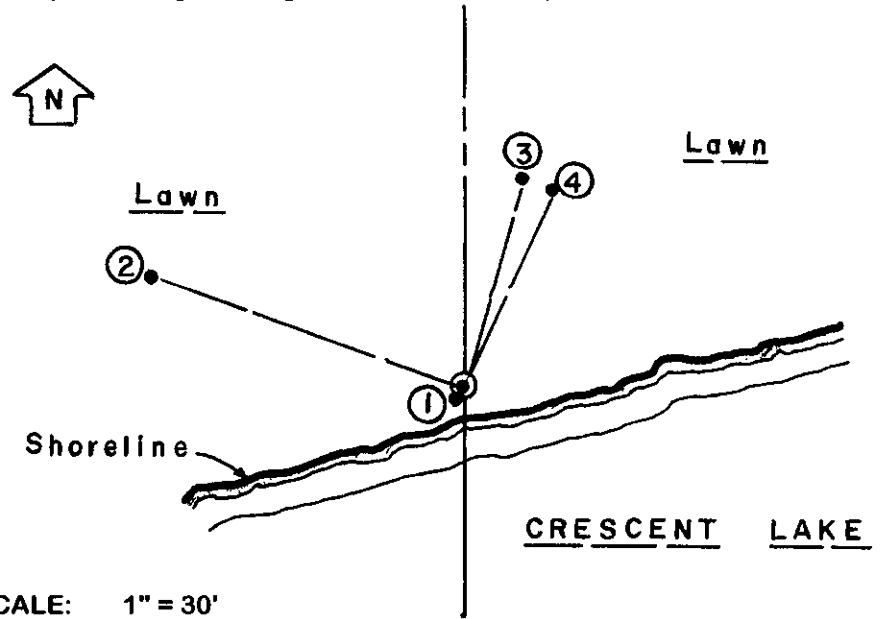
Found and accepted an old uncapped 1.5" dia. iron pipe flush in gravel fill on top of rock rip rap bank down to lakeshore 5' South and bearing N75°E this date. Corner falls along the NE root crown of a 9" Mr, also used for new ties below and there is also an old square head bolt on SW side of and 1" below top of iron pipe found. Due to refusal of rocks and roots below grade, I drove a 6" long top section cut from a standard 2" dia. x 30" aluminum pipe monument with stamped Oneida County cap over the old iron pipe found to 1.5" above grade. The corner is also at the SW corner of an improved lake frontage lot at Fire No. 2892 Wausau Road.

In July 1863, William E. Daugherty/GLO set a wood post as original corner and marked OBTs: a 15" Pw N50°W 14 links and a 12" Pw N68°E 9 links; all are now obliterated.

During a GLO Resurvey in 1939, per field notes filed as L-863 in Oneida County survey records, Cadastral Surveyors Hal D. Craig and Lester S. Mann note a point established as an apparent or probable MC on top of 6" high old lake bank bearing N70°E/S70°W from marked BTs: a 16" Pw stump N81°E 9 links and an 18" Pw high stump with full length burnt face blaze N55°W 14 links. No new wood post, iron or concrete monument was set, nor newer BTs noted by the GLO Resurvey, which is considered very irresponsible by this surveyor, as all of the foregoing corner evidence is now obliterated beyond usage!

In February 1989 and August 1993, William E. Bandow/RLS 1182 notes a 1.5" dia. iron pipe found at this MC per CSM No. 1344 and Plat of Survey B-2793 in Oneida County records; 1939 GLO Resurvey MC also noted not used N29°W 48.97'.

Plan view map of monument location with bearing and distance ties to a minimum of four(4) described witness or reference monuments of concrete, natural stone, iron, live bearing trees or equivalent material. If applicable, also show a minimum of two(2) bearing and distance ties to any other monument found and not accepted; including the bearing and distance from the accepted monument.



WITNESS MONUMENT TIES:

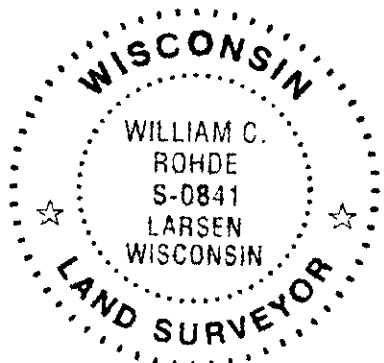
- ① New 9" Mr BT S30°W 0.73'.
- ② New 16" Pr BT N70°W 51.27'.
- ③ New 11" Pr BT N15°E 34.68'.
- ④ New 18" Pr BT N24°E 34.54'.

No standard white poly 'T' marker post was set nearby corner due to it falling in lawn area of improved lake frontage lots.

SCALE: 1" = 30'

Unless otherwise indicated, all bearing tree ties are to a .25" dia. by 2.5" long PK nail with a 1.25" dia. steel washer driven into unblazed right face and a .25" dia. by 2.5" long PK nail with a 2" dia. steel washer stamped BT is also driven into unblazed face of bearing tree at DBH; the basis for measured bearings is by compass to nearest degree and all tie distances are measured horizontal by steel tape corrected to nearest 1/100th feet at standard temperature of 68° F.

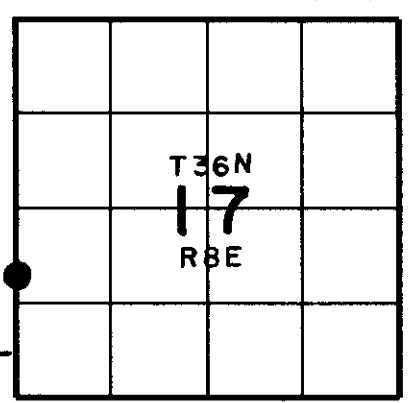
RLS SEAL:



LAND SURVEYOR CERTIFICATE:

I, William C. Rohde, hereby certify that I am duly licensed as a Professional Land Surveyor in the State of Wisconsin; that this USPLS monument location was determined by me and/or under my direct supervision and control; and that this U.S. Public Land Survey Monument Location Record is true and correct to the best of my knowledge and belief.

Signed *William C. Rohde*
William C. Rohde RLS 841



SECTION LOCATION MAP
INDEX NO. LM 5

3608181300

US PUBLIC LAND SURVEY SYSTEM MONUMENT RECORD

This form is intended and designed to fulfill all requirements of Wisconsin Administrative Code, Chapter A-E 7.08 U.S. Public Land Survey Monument Record (3) (a)(b)(c)(d)(e)(f)(g)(h)(i). An additional sheet may be added if necessary to conform with said requirements.

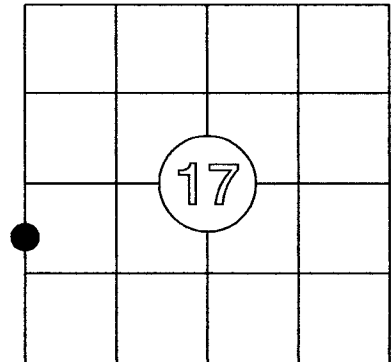
The coordinate value, if shown, has been verified by at least one of the following methods: 1) comparison to a previously GNSS determined published value; 2) The value is the average of two or more GNSS observations at markedly different times; 3) one or more distances were measured to the corner from temporary GNSS observed offset locations.

REGISTER OF DEEDS OFFICE
ONEIDA COUNTY
FILED

JUN 26 2020

KYLE J. FRANSON
REGISTER OF DEEDS

CORNER ID: 3608181300



(a) Corner location:

North Witness Meander Corner, Crescent Lake
West line of Gov't Lot 5
Section 17
Township 36 North
Range 8 East

WISCRS: N/A
N: N/A
E: N/A
Datume: N/A
GNSS Method: N/A
GNSS Control: N/A

(b) History of Original Corner

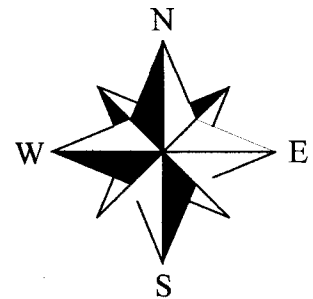
Corner Set: Wood Post
Original Surveyor: Wm. Daugherty
Date of Survey: July, 1863

Original Bearing Trees:
15" Pw - N 50° W, 14 links
12" Pw - N 68° E, 9 links

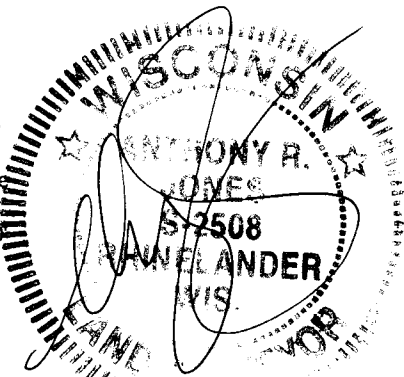
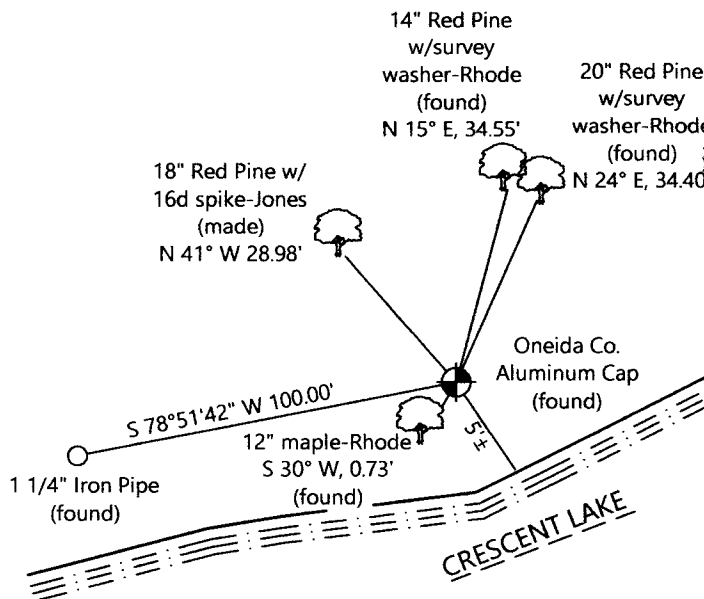
(c)(d)(e)(f)(g)(h) Description of monument found at this corner and, if it was accepted, state all evidence (material, testimonial, occupational, plats, record, other monuments) used as a basis for establishing location. If re-establishing through lost corner proportionate methods, indicate all monuments, distances and directions used to establish this location. Indicate type of monument and sign post found or set.

This is a continuation of a previous USPLSS Monument Record by Surveyor Wm. C. Rhode, S-841, dated March 1, 2003. See that record for previous descriptions of location and witness ties.

- 2003 - Wm. C. Rhode finds a 1 1/2" iron pipe and sets aluminum Oneida County monument over the top of the pipe and establishes four new bearing trees.
- 2009 - Miesbauer finds aluminum monument in place (A2353)
- 2012 - Loftus finds aluminum monument in place (A2701)
- 9/28/2019 - Jones, conducting a retracement of boundary lines of Oneida Co. Certified Survey Map No. 1344, found an existing Oneida County aluminum cap as described by Rhode. Witness Tie No. 2, a 16" Pr N 50° W, 51.27' has been cut off at ground level. I found the remaining ties by Rhode in place, in good condition. I made two new ties:
16d nail in the base of a 18" Pw, N 41° W, 28.98'
1 1/4" iron pipe, S 78° 51' 42" W, 100.00'
- I did not place a white marker post as this is in a manicured lawn area



Magnetic Bearings
Not To Scale



(i) I, Anthony R. Jones, Wisconsin Professional Land Surveyor No S-2508, hereby certify that the corner location shown on this record was determined by me, or under my direction or control, and that this U.S. Public Land Survey Monument Record is correct and complete to the best of my knowledge and belief.

[Signature]
Anthony R. Jones, PLS No. S-2508
9/28/19
Date

A.R. JONES LAND SURVEYING
2788 SCHWARZ RD.
RHINELANDER, WI 54501
715.894.7231 arjsurvey@charter.net

Index No. L-M - 5