

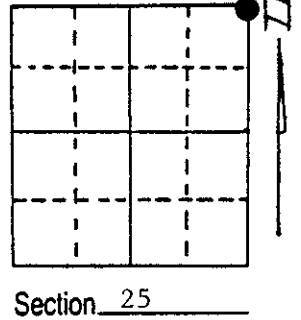
U.S. PUBLIC LAND SURVEY MONUMENT RECORD

Note: This form is intended and designed to fulfill all requirements of Wisconsin Administrative Code, Chapter A-E 5.02, U.S. Public Land Survey Monument Record (3) (a) (b) (c) (d) (e) (f) (g) (h) (i). An additional sheet may be added if necessary to conform with said requirements.

(a) Corner location: Township 36 North
 Range 8 East ~~West~~

Town/City/Village Crescent

County Oneida

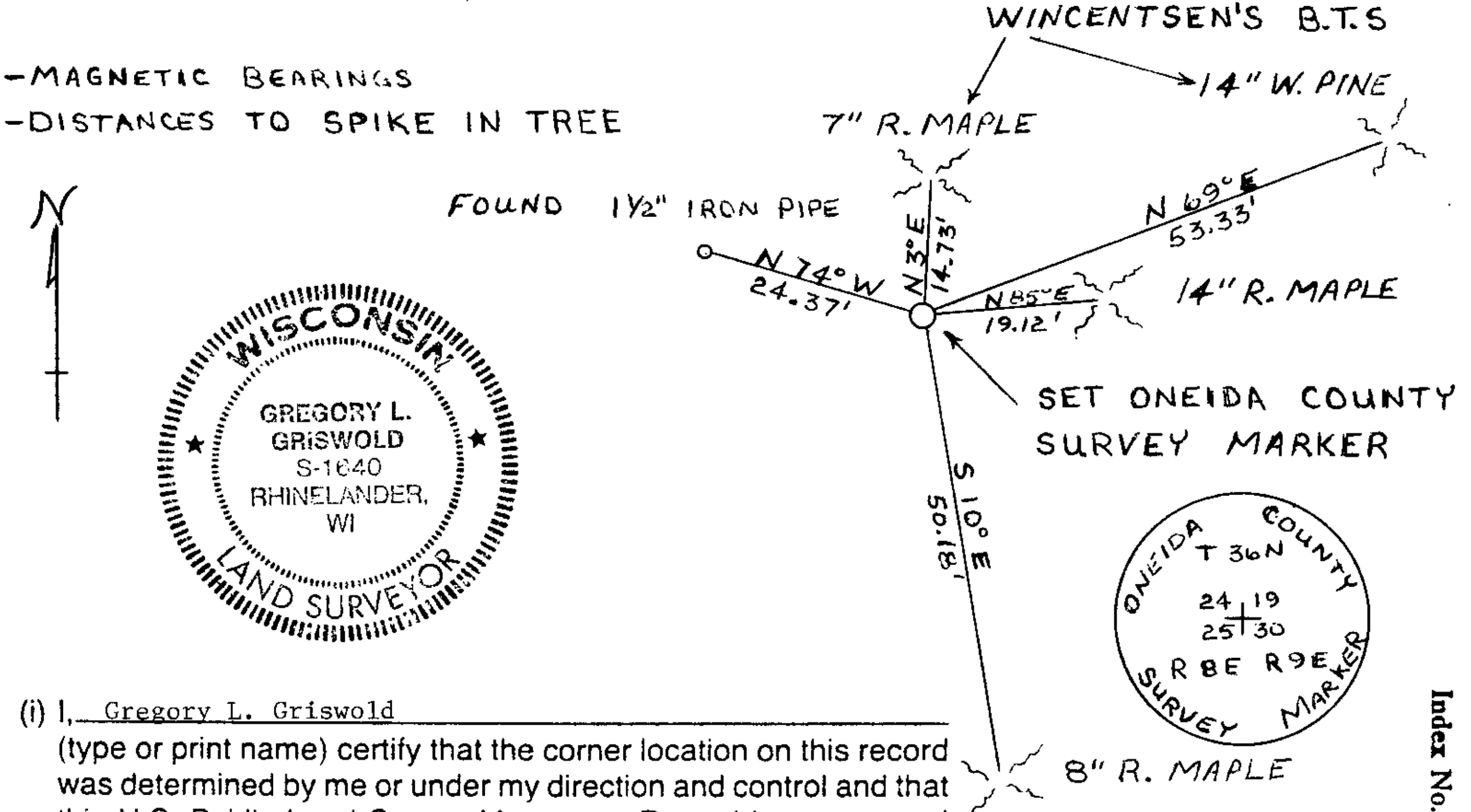


(b) (f) (g) (h) Description of monument found at this corner and if it was accepted, state all evidence (material, testimonial, occupational, plats, records, other monuments) used as a basis for accepting. If not accepted or if nothing was found, state evidence used as basis for establishing location. If reestablished through lost corner proportionate methods, indicate all monuments, distances and directions used to establish.

1859 H. Fellows established original corner; 1863 Wm. Daugherty at corner; 1894 B.F. Dorr at corner; 1915 D.H. Vaughan at corner set 2" x 60" iron pipe in wet marsh with 1 1/2" x 60" witness pipes 25' east and west; 1953 F.R. Wincentzen found Vaughan's corner and witness 1 1/2" iron pipe 25' west. Made B. T.'s Maple 5 N 11° W 22 lks (14.52') and W. Pine 8 N 60° E 80.3 lks (53.00'); 1960 N. Loftus found corner and set iron pipe with scribed (RIPCO) plate;

I found a 2" iron pipe and a witness 1 1/2" iron pipe 24.37' westerly, a 1 1/2" iron pipe with scribed plate (RIPCO) set 0.3' westerly off the 2" iron pipe, and Wincentzen's B. T.'s. I set Oneida County survey marker with scribed cap in the place of the 2" x 60" iron pipe and made new witnesses as shown below. Note that it was necessary to remove the RIPCO iron pipe to set the new monument.

(c) (d) (e) Plan view of corner with ties to at least 4 witness monuments. If in disagreement with previously established corner, show the distances between the two corners and also indicate the ties to the disputed corner.



(i) I, Gregory L. Griswold
 (type or print name) certify that the corner location on this record was determined by me or under my direction and control and that this U.S. Public Land Survey Monument Record is correct and complete to the best of my knowledge and belief.

Gregory L. Griswold 29 MAY 86
 Signature Date

Index No. 6-25

3608240000