

U.S. PUBLIC LAND SURVEY MONUMENT LOCATION RECORD

Recorders Data

USPLS CORNER: WEST 1/4 CORNER SECTION: 28 TOWNSHIP: 36 NORTH RANGE: 8 EAST

NAME OF WATERWAY FOR M.C. CORNER: N/A SECTION LINE: N/A

(CITY)(VILLAGE)(TOWN) OF: CRESCENT COUNTY OF: ONEIDA

Description of monument found or placed and all other evidence used as the basis for monument location; including monuments and related measurements required if the corner location was reestablished by lost corner proportionate methods. Also indicate name of original surveyor, original survey date and the corner monument, bearing trees, witness or other reference monuments established; including measured bearing and distance ties, from available records.

Found and accepted a railroad spike driven flush with existing blacktop roadway pavement surface and painted with a fluorescent orange cross, 6.7 feet North of the South edge of 22' wide pavement mat and 22 feet West of the centerline of an existing culvert under the roadway for Crescent Creek flow; corner location by common report for over 20 years.

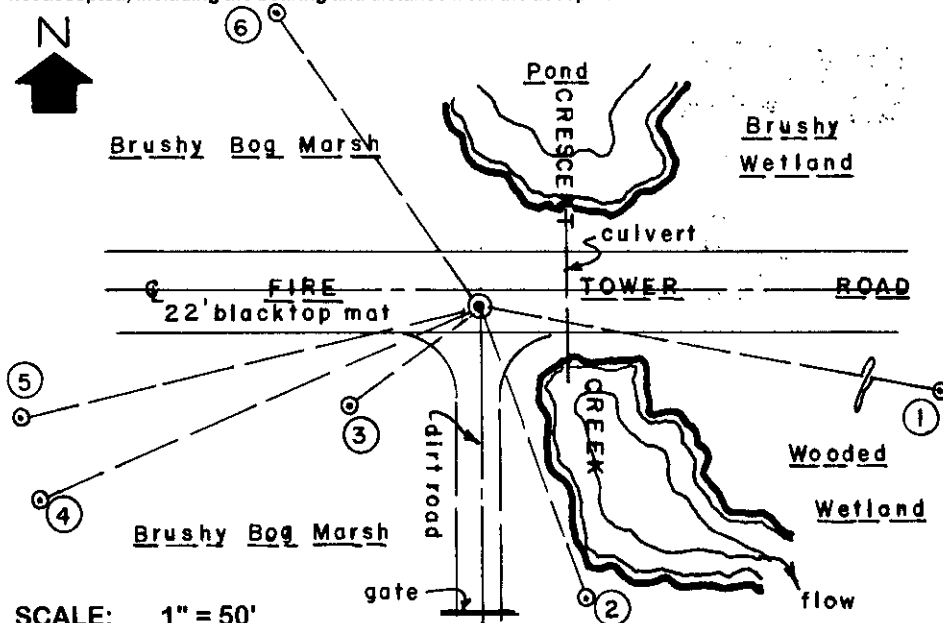
In 1863, William E. Daugherty/GLO set a wood post as the original corner and marked OBTs, a 15" Pw N37°E 636 links and a 25" Pw S71°W 1024 links, all of which are now obliterated or indeterminate for locational purposes. In 1930, Hall identified Vaughns post at 1/4 corner, but noted no ties.

In 1978, Sy Poskie, RLS 140, referenced this corner location per his Plat of Survey filed as L-942 in Oneida County survey records, which is verified by relationship to his iron pipe lot corner SW of the corner railroad spike and creek culvert which he had detailed on subject plat of survey.

Four(4) older bearing trees with ribboned 60d tie point spikes, for which I could find no reference in Oneida County survey records by an unknown surveyor, were also found and accepted for new ties indicated herein. No reference monuments were set on a right line thru the corner location, as all of the adjacent area is wetland. This recovery was completed April 28, 1999; there were no witnesses other than vehicle drive-bys.

NOTE: Witness monument ties 2 and 4 are to standard PK nail/washer in right face and witness monument tie 6 is to a standard PK nail/washer in left face. Witness monument ties 1 and 5 are to rusted 60 spikes as described.

Plan view map of monument location with bearing and distance ties to a minimum of four(4) described witness or reference monuments of concrete, natural stone, iron, live bearing trees or equivalent material. If applicable, also show a minimum of two(2) bearing and distance ties to any other monument found and not accepted; including the bearing and distance from the accepted monument.



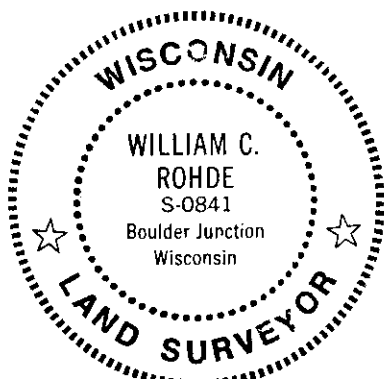
WITNESS MONUMENT TIES:

- ① Older BT 22" Pw with rusted 60d spike in left face S79°E 153.00'.
- ② New BT 9" Fir S19°E 80.60'.
- ③ Rusted 1" dia. iron pipe 26" high found S52°W 43.85'.
- ④ Older BT 20" Pr with rusted 60d spike in right face S66°W 126.25'.
- ⑤ Older BT 16" Pr with rusted 60d spike in left face S76°W 123.70'.
- ⑥ Older BT 18" Pj with rusted 60d spike in left face N35°W 107.92'. Standard white poly 'T' marker post set 26.5' North of corner location.

SCALE: 1" = 50'

Unless otherwise indicated, all bearing tree ties are to a .25" dia. by 2.5" long PK nail with a 1.25" dia. steel washer driven into unblazed right face and a .25" dia. by 2.5" long PK nail with a 2" dia. steel washer stamped BT is also driven into unblazed face of bearing tree at DBH; the basis for measured bearings is by compass to nearest degree and all tie distances are measured horizontal by steel tape corrected to nearest 1/100th feet at standard temperature of 68° F.

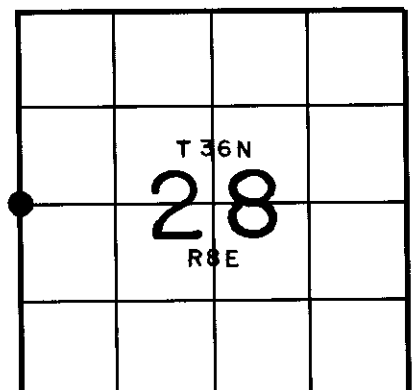
RLS SEAL:



LAND SURVEYOR CERTIFICATE:

I, William C. Rohde, hereby certify that I am duly licensed as a Professional Land Surveyor in the State of Wisconsin; that this USPLS monument location was determined by me and/or under my direct supervision and control; and that this U.S. Public Land Survey Monument Location Record is true and correct to the best of my knowledge and belief.

Signed *William C. Rohde*
William C. Rohde RLS 841



SHEET 1 OF 1
FORM REVISED: 05/12/99

Date Signed: May 11, 1999

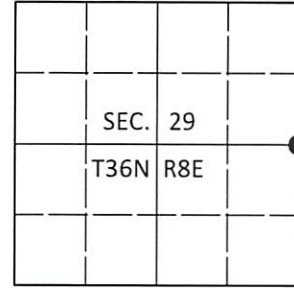
SECTION LOCATION MAP
INDEX NO. T 9
36 08 29 20 00

U.S. PUBLIC LAND SURVEY MONUMENT RECORD

Note: This form is intended and designed to fulfill all requirements of Wisconsin Administrative Code, Chapter A-E 7.08 U.S. Public Land Survey Monument Record (3)(a-i).

(a) CORNER LOCATION
 1/4 Cor. of Secs. 28 & 29
 Township 36 North
 Range 8 East of the 4th P.M.
 Town of Crescent
 County of Oneida

WISCORS - Oneida County
 N: 142,599.07 USft
 E: 238,788.87 USft
 Datum: NAD 83(2011)
 GNSS Method: RTN - Direct
 GNSS Control: WISCORS VRS



(b) HISTORY OF ORIGINAL CORNER ESTABLISHMENT

Original Surveyor:

Original Accessories:

Date of Survey Commenced:
 Completed:

See previous monument record(s)

(b)(f)(g)(h) Description of monument found at this corner and if it was accepted, state all evidence (material, testimonial, occupational, plats, records, other monuments) used as a basis for accepting. If not accepted or if nothing was found, state evidence used as basis for establishing location. If re-established through lost corner proportionate methods, indicate all monuments, distances and directions used to establish. Indicate type of monument and sign post found or set.

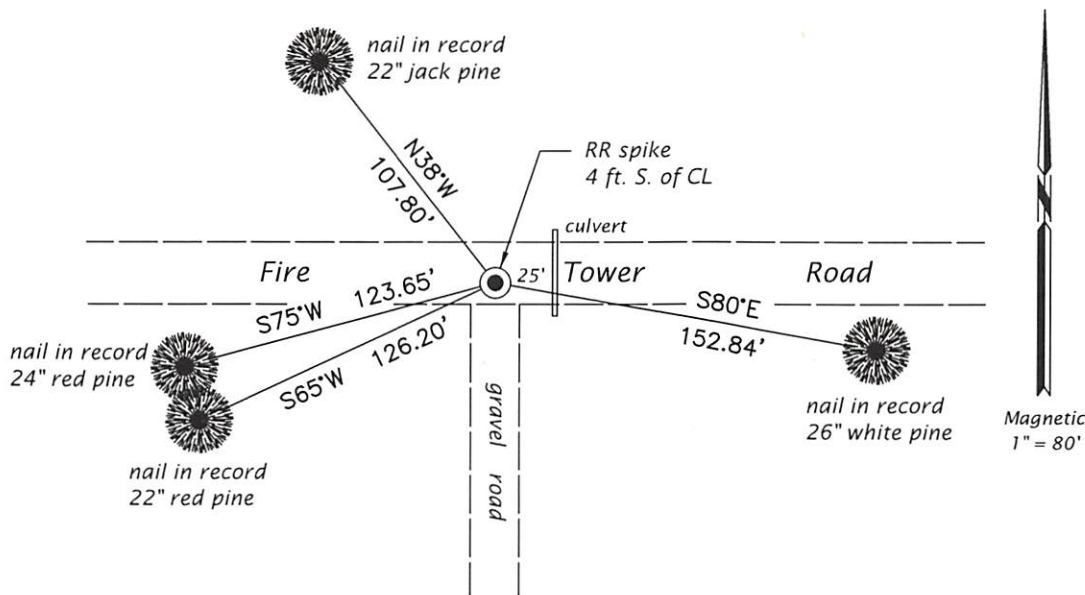
This is a perpetuation of the following monument record(s) that comprise a complete history of the corner:

May 11, 1999: USPLS Monument Record No. 3608292000 by William C. Rohde, PLS

Oct. 3, 2020: I found and accepted the record monument, a railroad spike 4 ft. South of the road centerline. The record iron pipe witness is in place, but very loose. I did not cut to measure the remaining bearing tree, but it appears to be in place. I found or established accessories as shown below.

The coordinate value shown has been verified by at least one of the following methods: 1) comparison to a previously GPS determined published value; 2) the value is the average of two or more GPS observations at a markedly different time; 3) one or more distances were measured back to the GPS observed corner from temporary GPS observed offset locations.

(c)(d)(e) Plan view of corner with ties to at least 4 witness monuments. If in disagreement with previously established corner, show the distances between the two corners and also indicate the ties to the disputed.




REGISTER OF DEEDS OFFICE
 ONEIDA COUNTY
 FILED

JAN 13 2021

KYLE J. FRANSON
 REGISTER OF DEEDS

(i) I, Jeffrey W. Austin, Professional Land Surveyor No. S-1885, hereby certify that the corner location on this record was determined by me or under my direction and control and that this U.S. Public Land Survey Monument Record is correct and complete to the best of my knowledge and belief.

 Signature
 15 DEC 2020 Date