

# U.S. PUBLIC LAND SURVEY MONUMENT RECORD

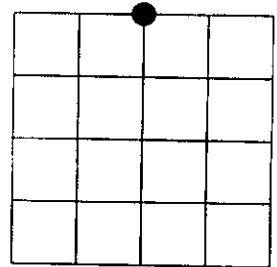
NOTE: This form is intended and designed to fulfill all requirements of Wisconsin Administrative Code, Chapter A-E 7.08 U.S. Public Land Survey Monument Record (3)(a)(b)(c)(d)(e)(f)(g)(h)(i). An additional sheet may be added if necessary to conform with said requirements.

(a) Corner location: Township 35 North  
 Range 08 East  
 Town of HARRISON  
 LINCOLN County, Wisconsin

REGISTER OF DEEDS OFFICE  
 ONEIDA COUNTY  
 FILED

SEP - 8 2016

AT \_\_\_\_\_ O'CLOCK \_\_\_\_\_ M  
 KYLE J. FRANSON  
 REGISTER OF DEEDS



Section 4

(b)(f)(g)(h) Description of monument found at this corner and if it was accepted, state all evidence (material, testimonial, occupational, plats, records, other monuments) used as a basis for accepting. If not accepted or if nothing was found, state evidence used as basis for establishing location. If reestablished through lost corner proportionate methods, indicate all monuments, distances and directions used to establish. Indicate type of monument found or set and sign post.

1860 - Original corner set by Alfred Millard

1937- Francis Fuchs- found a stone mounded dug into it and found point of an old stake and charred remains of same. He set a 6" x 6" granite stone.  
 Jack Pine 15" S24°E 447.4 Lks.

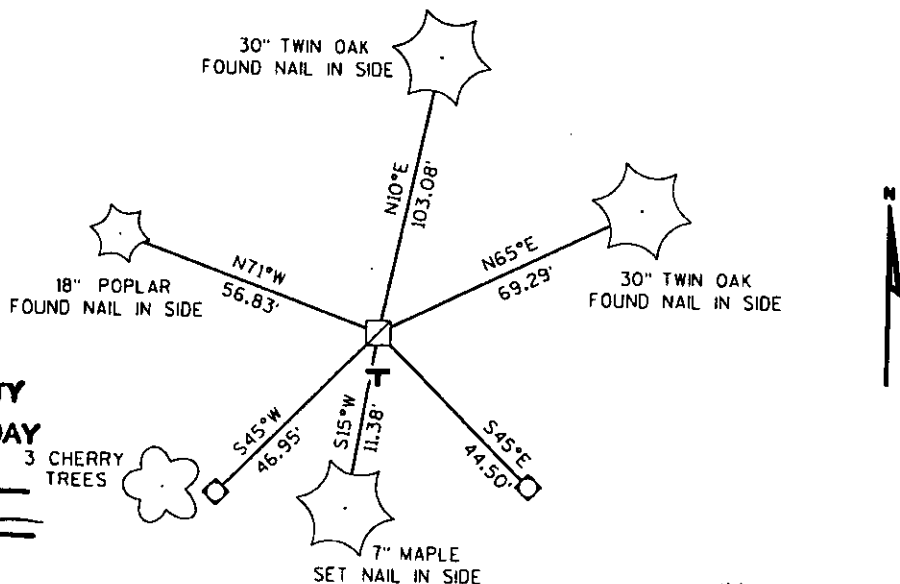
2003- I found 6"x6" granite stone in mound of stone.  
 BTs by others with nail in side

- 30" Twin oak N10°E 103.08'
- 30" Twin oak N65°E 69.29'
- 36" Oak S15°W 11.38'
- 18" Poplar N71°W 56.83'

Witnessed corner as shown below.

(c)(d)(e) Plan view of corner with ties to at least 4 witness monuments. If in disagreement with previously established corner, show the distances between the two corners and also indicate the ties to the disputed corner.

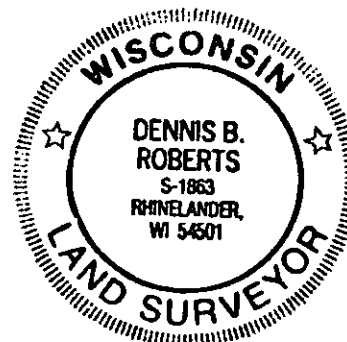
- FOUND 6"x6" GRANITE MONUMENT
- SET 1/4 ROD WITH ALUMINUM CAP
- PLASTIC "T" SIGN SET 3' SOUTH



RECEIVED AT LINCOLN COUNTY  
 COURTHOUSE THIS 10TH DAY  
 OF May 20 03  
*Zany Walker*  
 LAND INFORMATION OFFICE

(i) I, Dennis Roberts, Registered Land Surveyor \*S-1863, hereby certify that the corner location on this record was determined by me or under my direction and control and that this U.S. Public Land Survey Monument Record is correct and complete to the best of my knowledge and belief.

*Dennis B. Roberts*  
 Signature 5/02/03  
 Date



Index No. A-11

36-08  
 Z-11

3608330020